

The Quest to bring AARTFAAC online

3rd LOFAR Science Meeting, Zandvoort

06 April, 2016

Peeyush Prasad, UvA

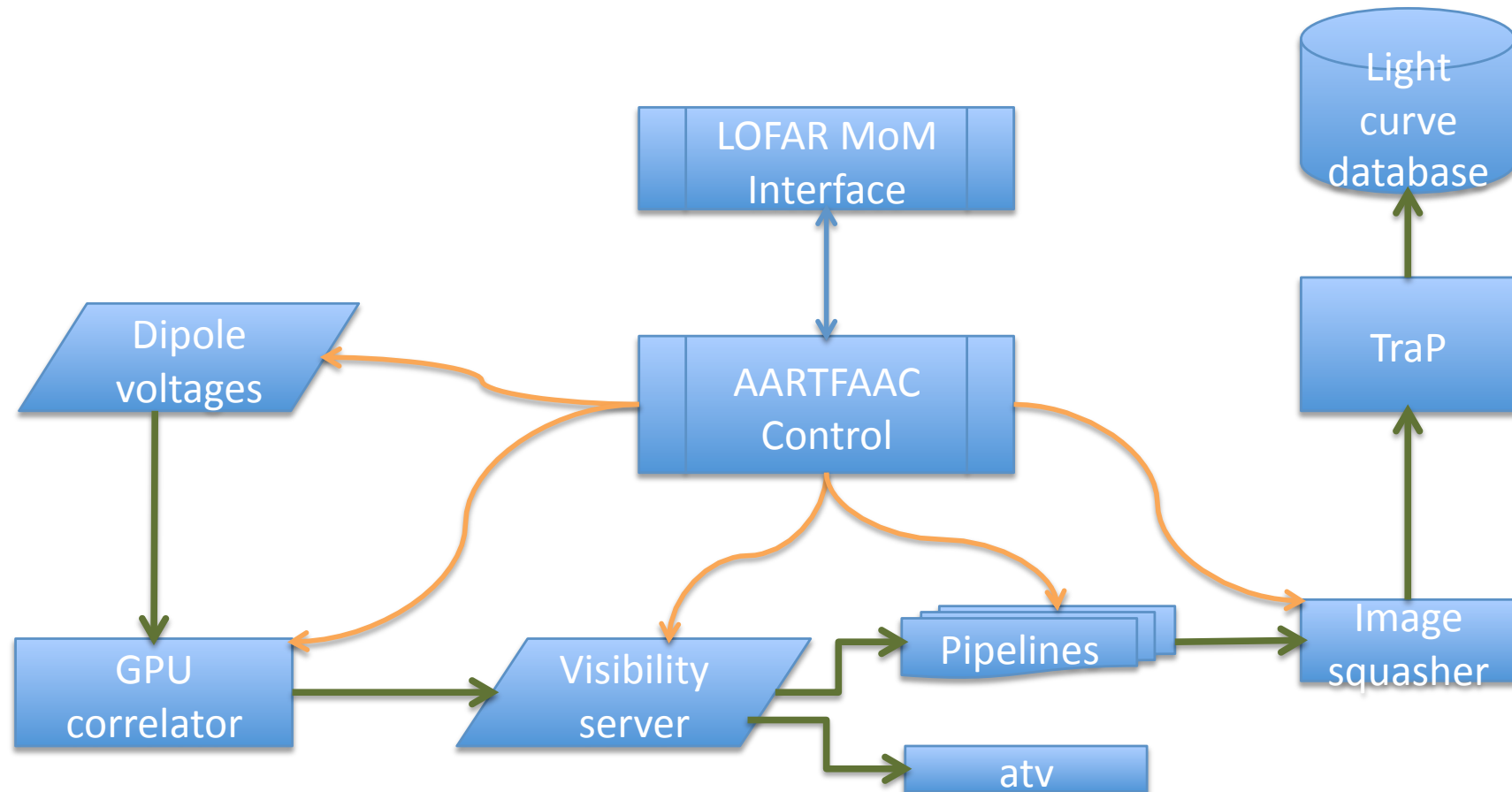
For the AARTFAAC team

The AARTFAAC All-sky monitor

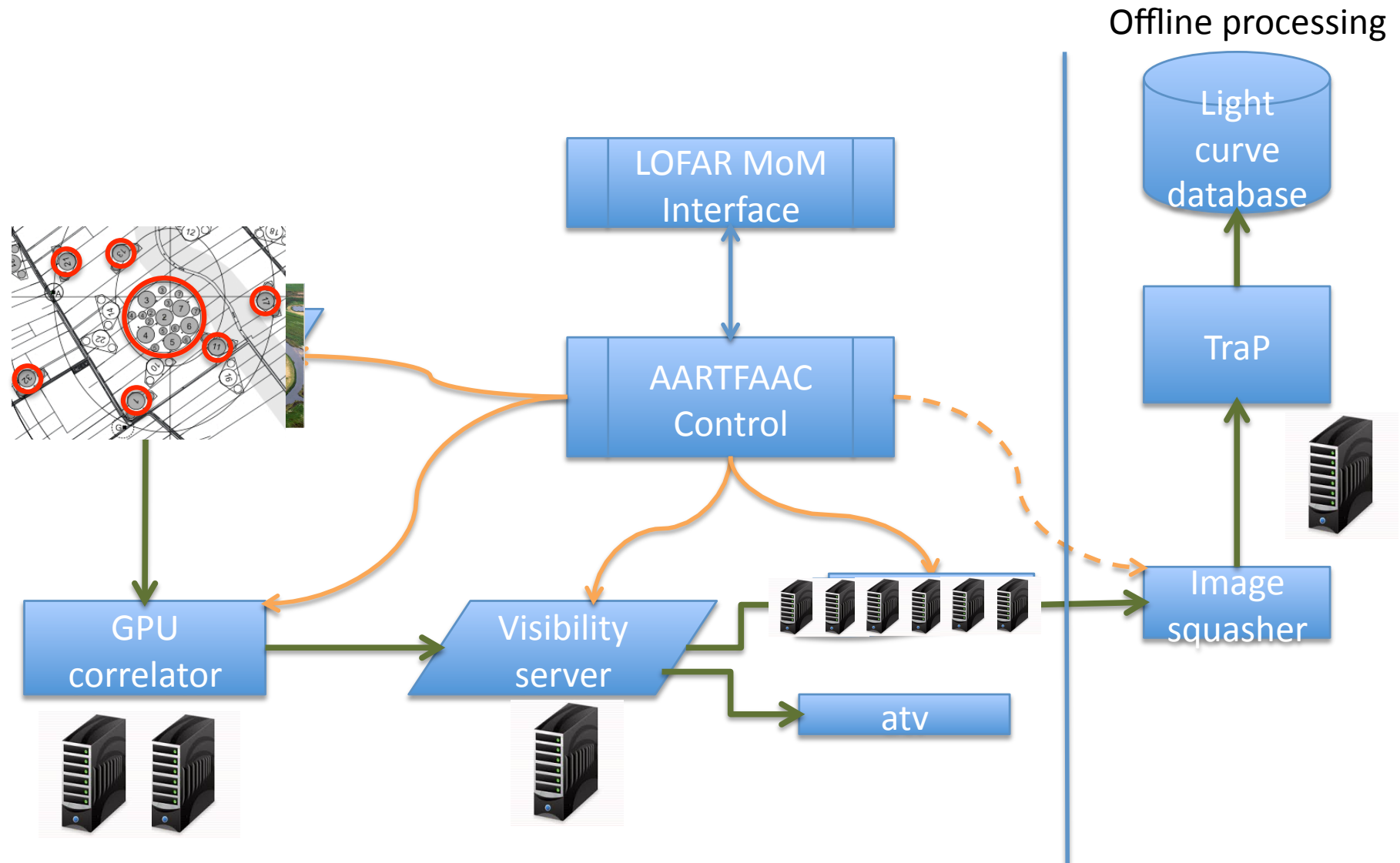


- Image plane transient detection via light curve extraction of all visible sources.
- Near real-time response (\sim sec latency), trigger generator for full sensitivity LOFAR observations.

Functional blocks, data flow

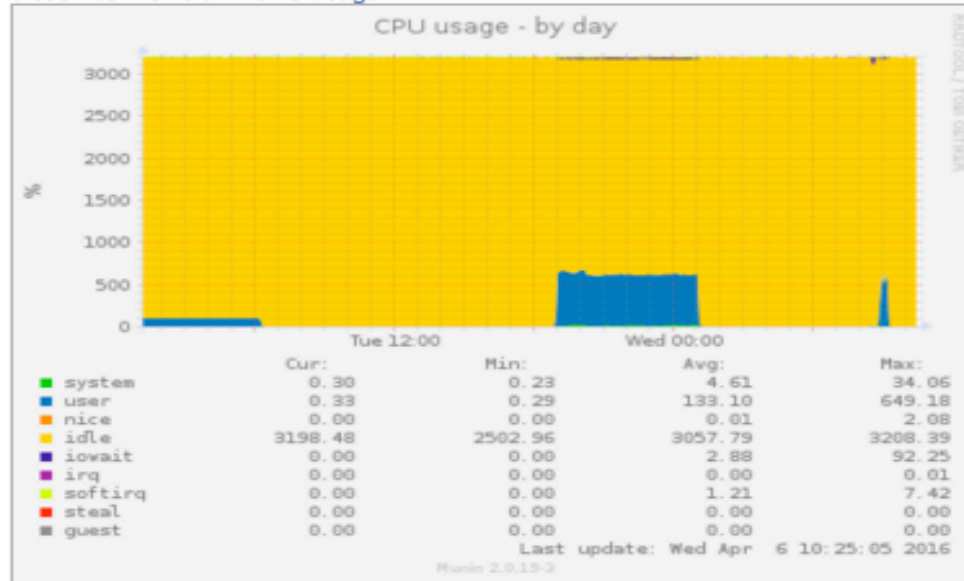


Functional blocks, data flow

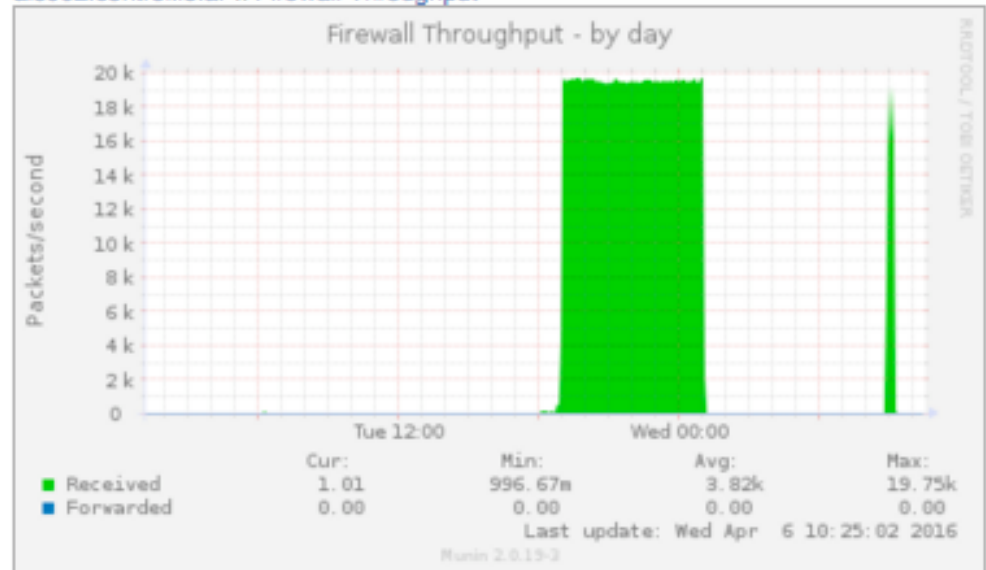


Control and Monitoring

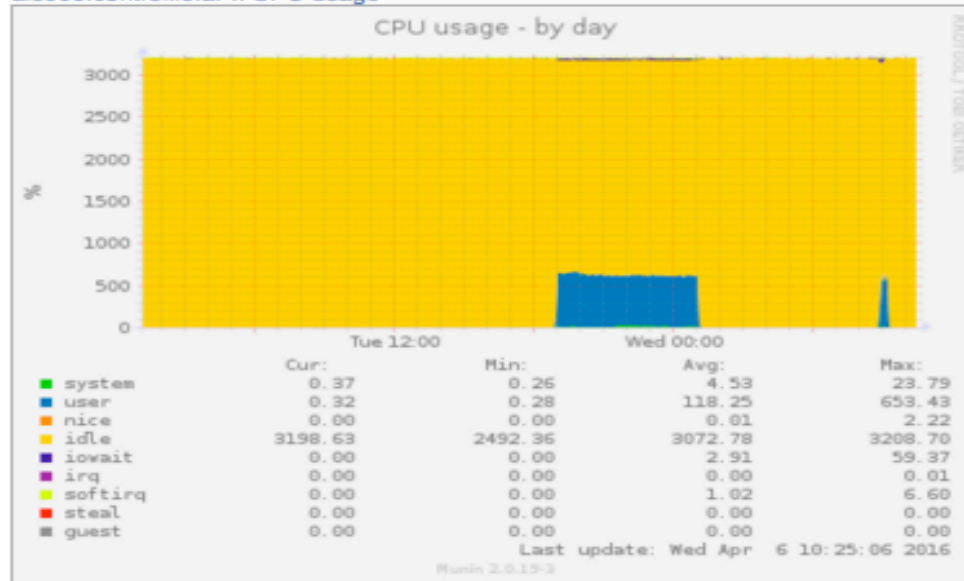
ais004.control.lofar :: CPU usage



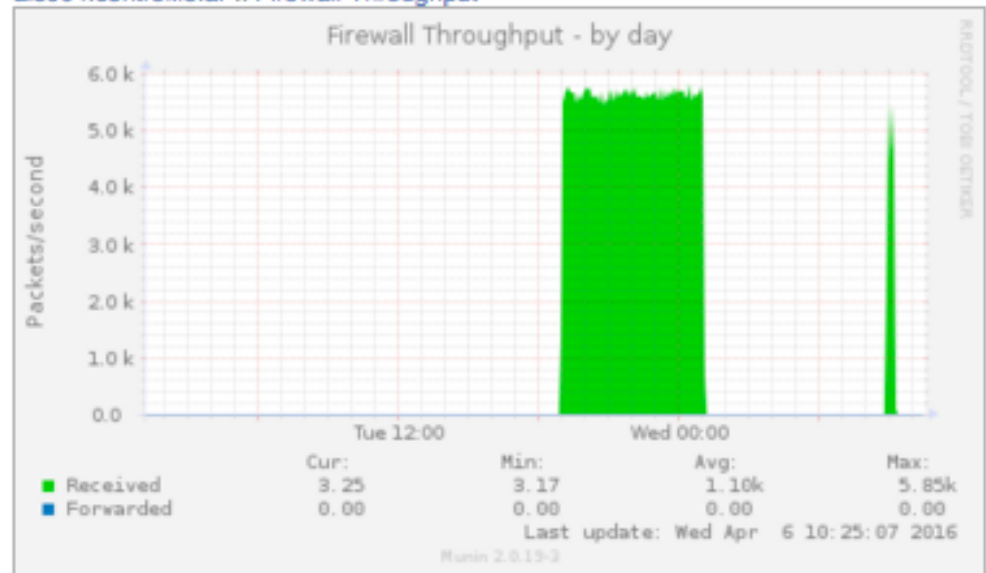
ais002.control.lofar :: Firewall Throughput



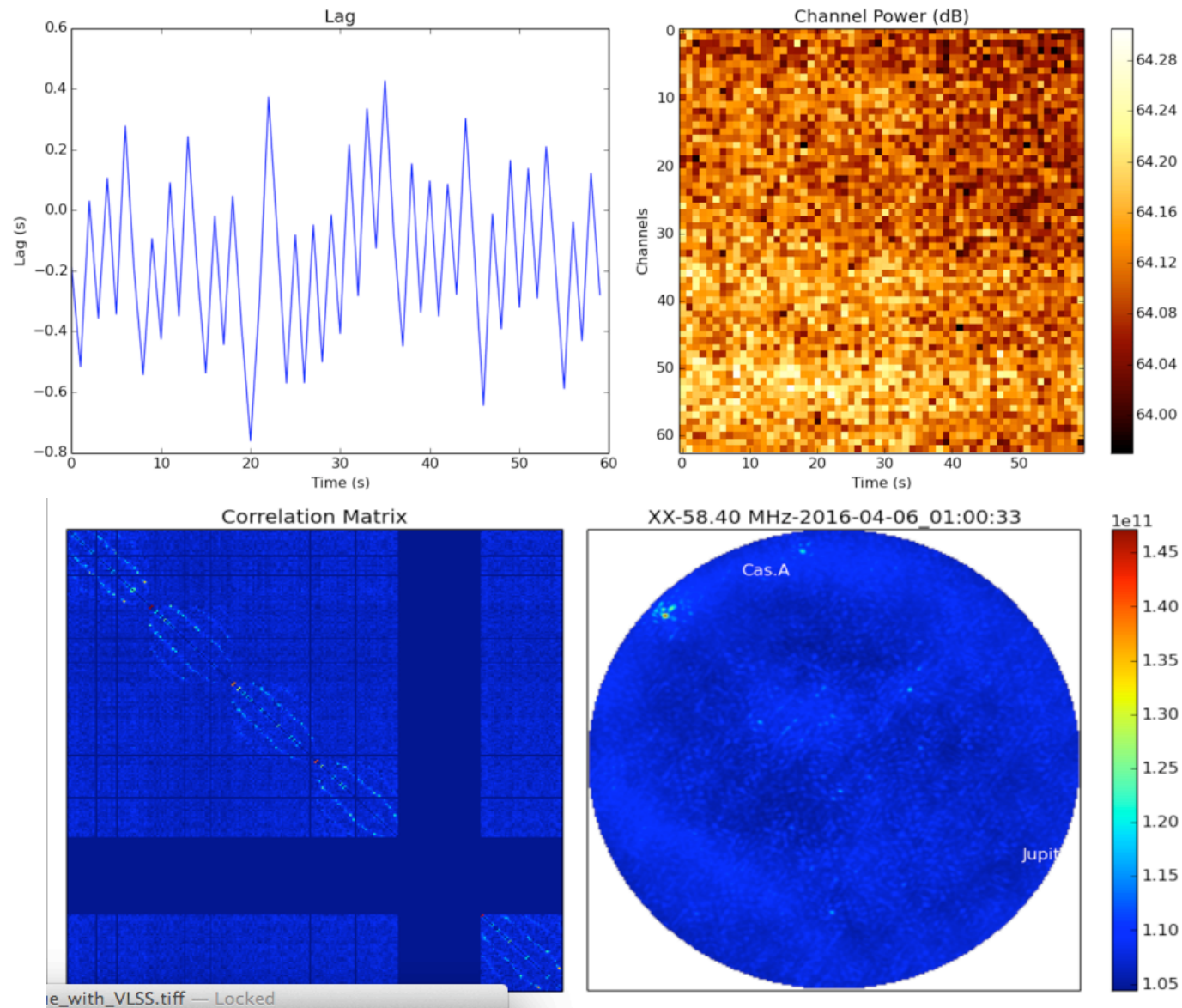
ais006.control.lofar :: CPU usage



ais004.control.lofar :: Firewall Throughput



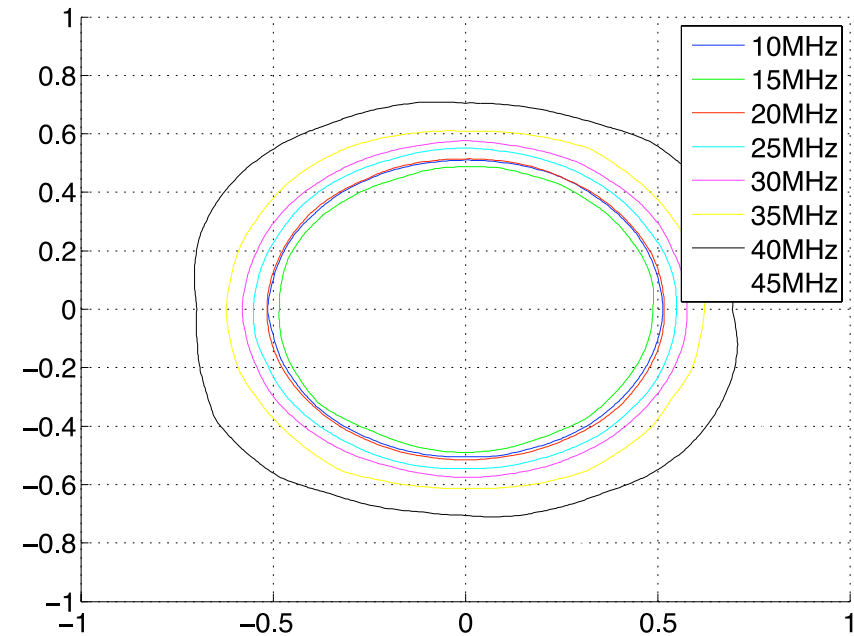
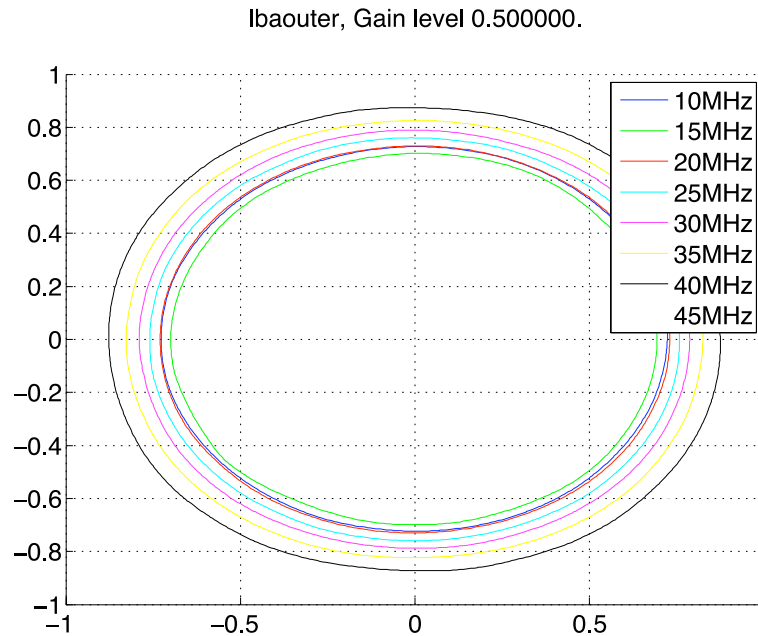
Control and Monitoring



<https://proxy.lofar.eu/aartfaac>

Flux calibration

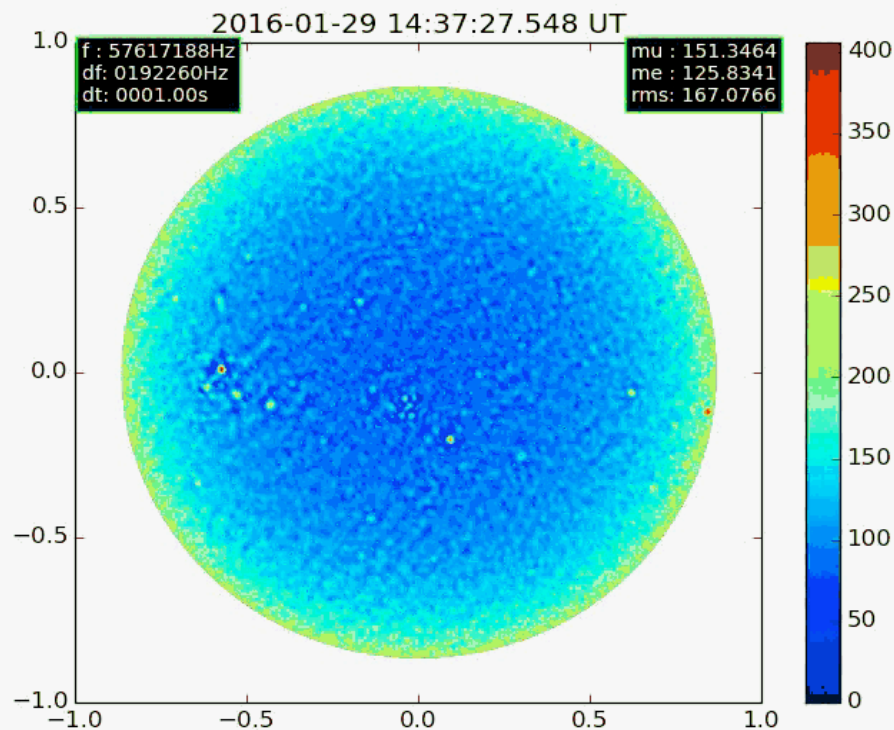
Ibaouter, Gain level 0.750000.



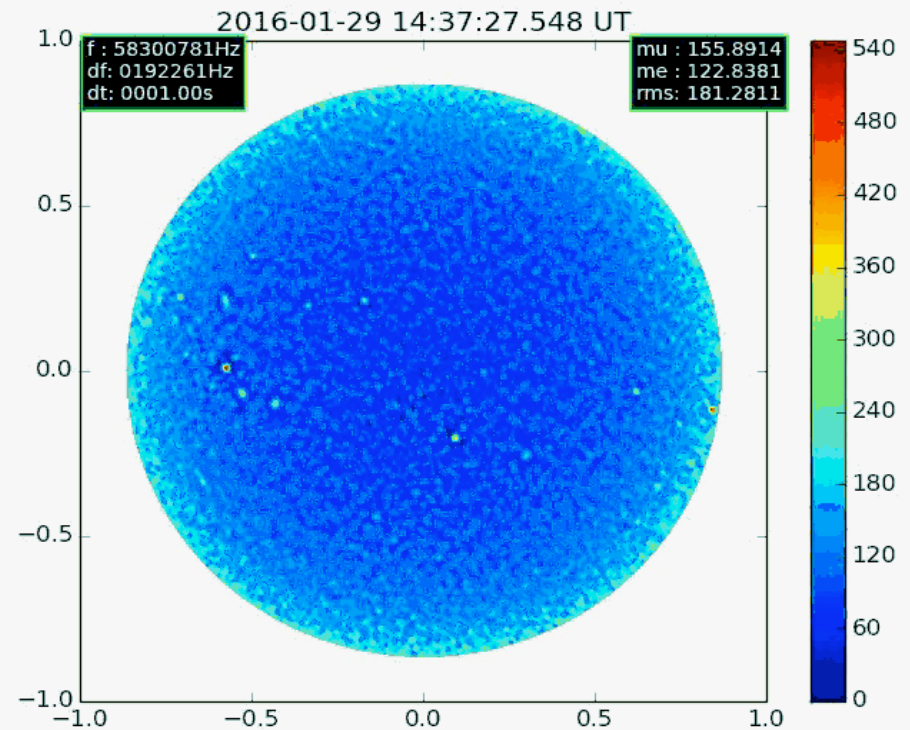
- Primary beam correction via beam model from EM simulations.
- Flux calibration based on models from Scaife and Heald (2012)

Imaging strategy

Image integration over subbands



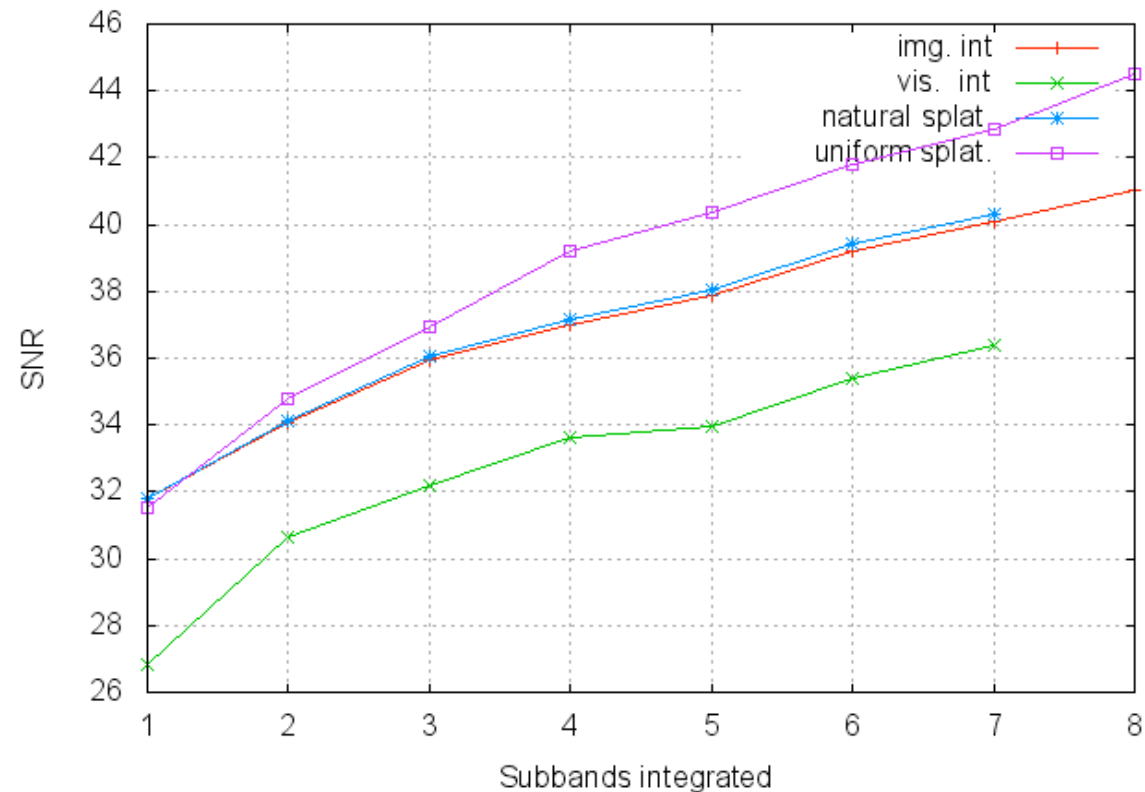
Visibility splatting on common grid, uniform weights



- Real-time flagging based on spectral median filtering of visibilities.
- Amplitude and phase calibration at 12kHz channel level.
- Imaging bandwidth of 1.5MHz, visibility splatting onto common grid.

Imaging strategy

Central region SNR: Various integration, 20160129T143727



- Real-time flagging based on spectral median filtering of visibilities.
- Amplitude and phase calibration at 12kHz channel level.
- Imaging bandwidth of 1.5MHz, visibility splatting onto common grid.

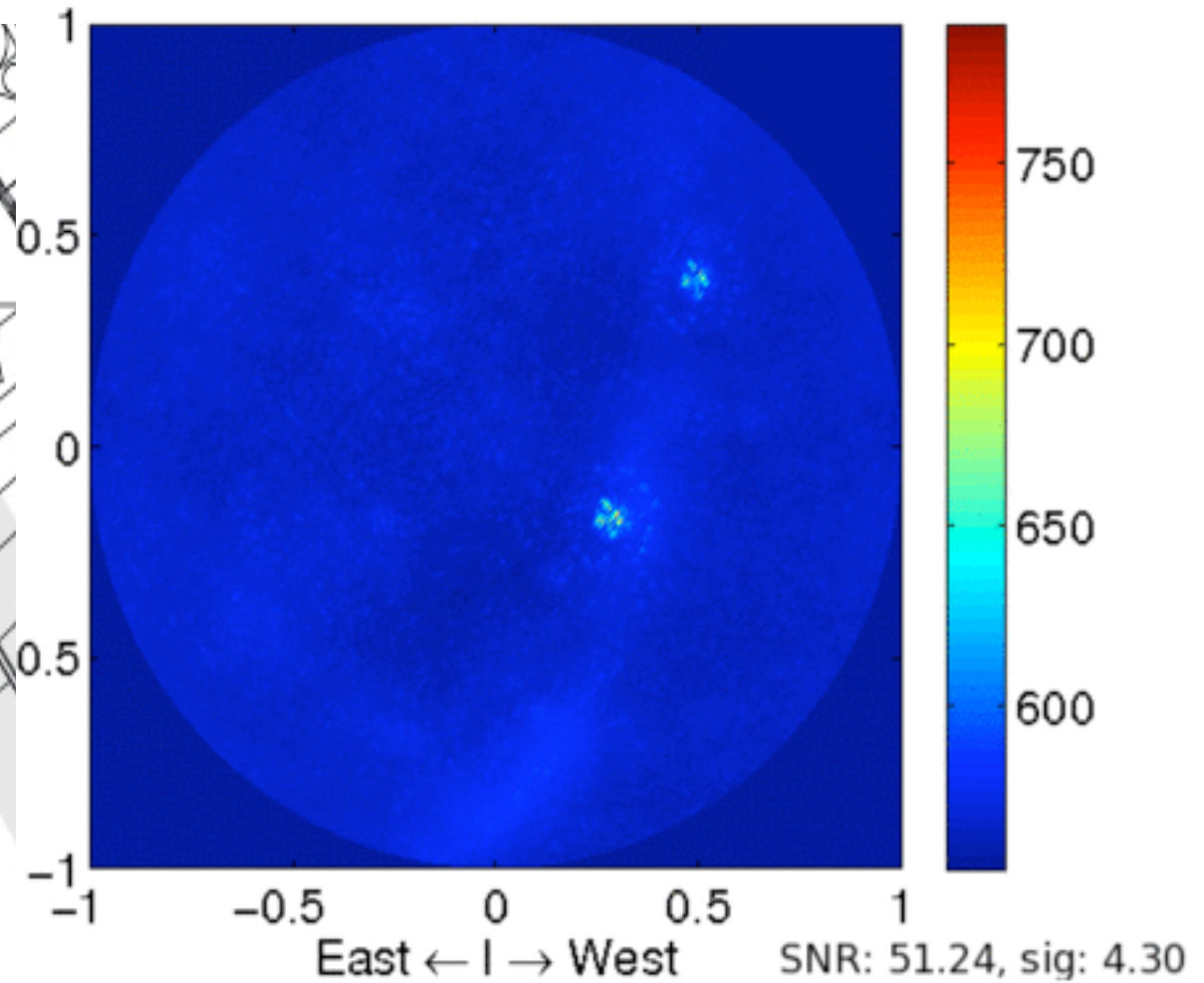
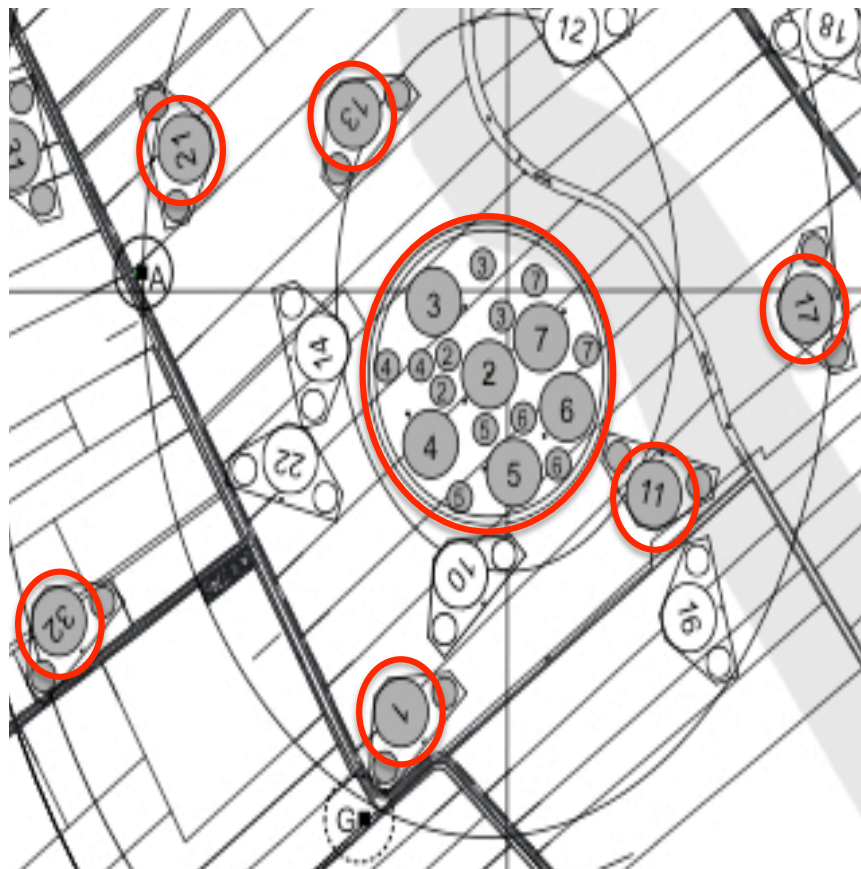
Current status



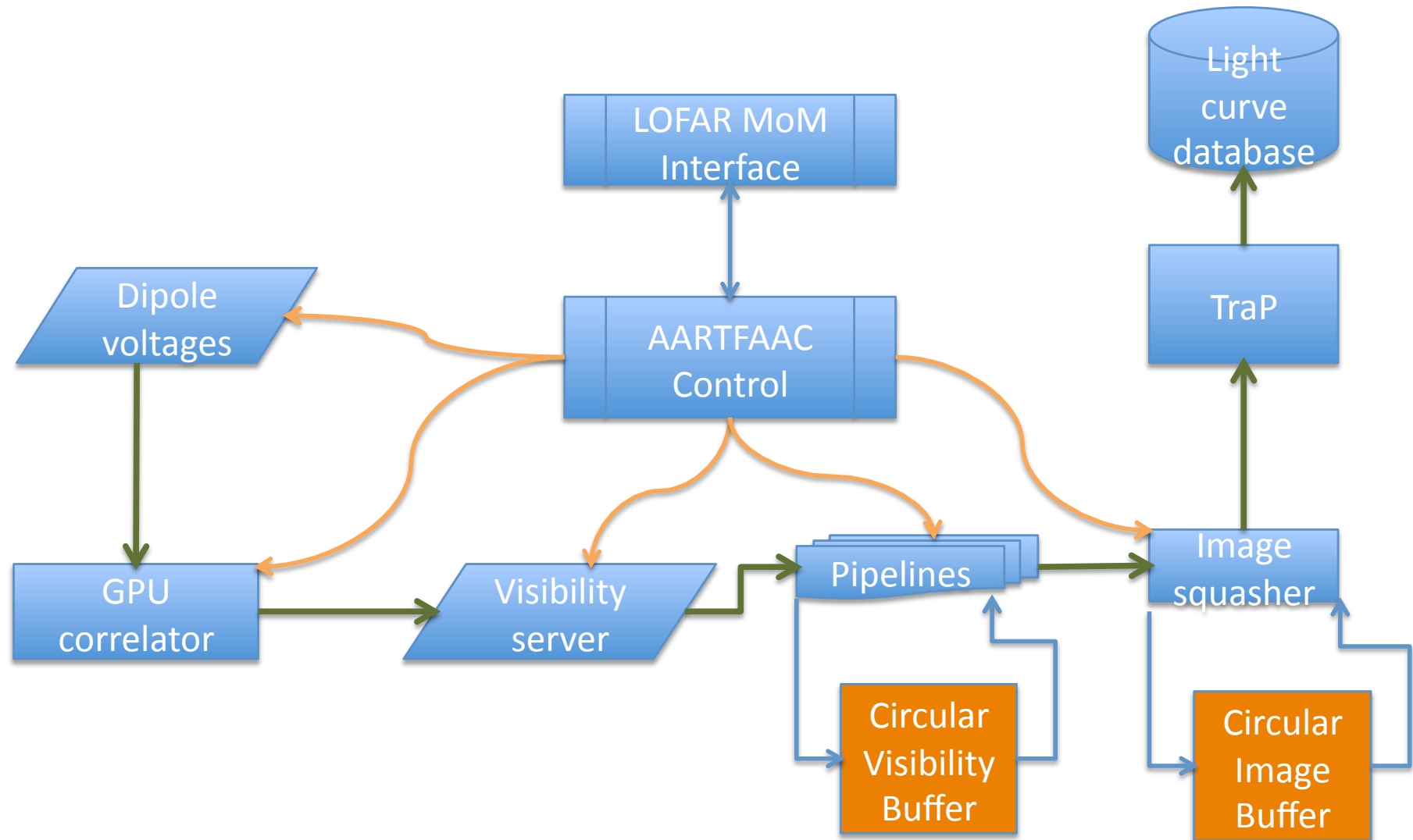
- 6 stations operational, generating autonomous images
- Processing 8 subbands in 16-bit mode.

Roadmap: 12 station AARTFAAC

A12-uncal:11-Nov-2015 14:42:40



Roadmap: Responsive AARTFAAC



Conclusions

- 6-station AARTFAAC now piggybacking on LOFAR observations.
- Calibrated images at 1s/subband cadence generated in real-time, processed offline in TraP.
- Robust control and monitoring system in place.
- Moving rapidly towards 12 station, 32 subband final system.