

Radio Recombination Lines in M82

M. C. Toribio

L. K. Morabito, J. B. R. Oonk, K. Emig,
P. Salas, F. Salgado, S. L. Zoutendijk,
H. J. A. Röttgering, A. G. G. M. Tielens

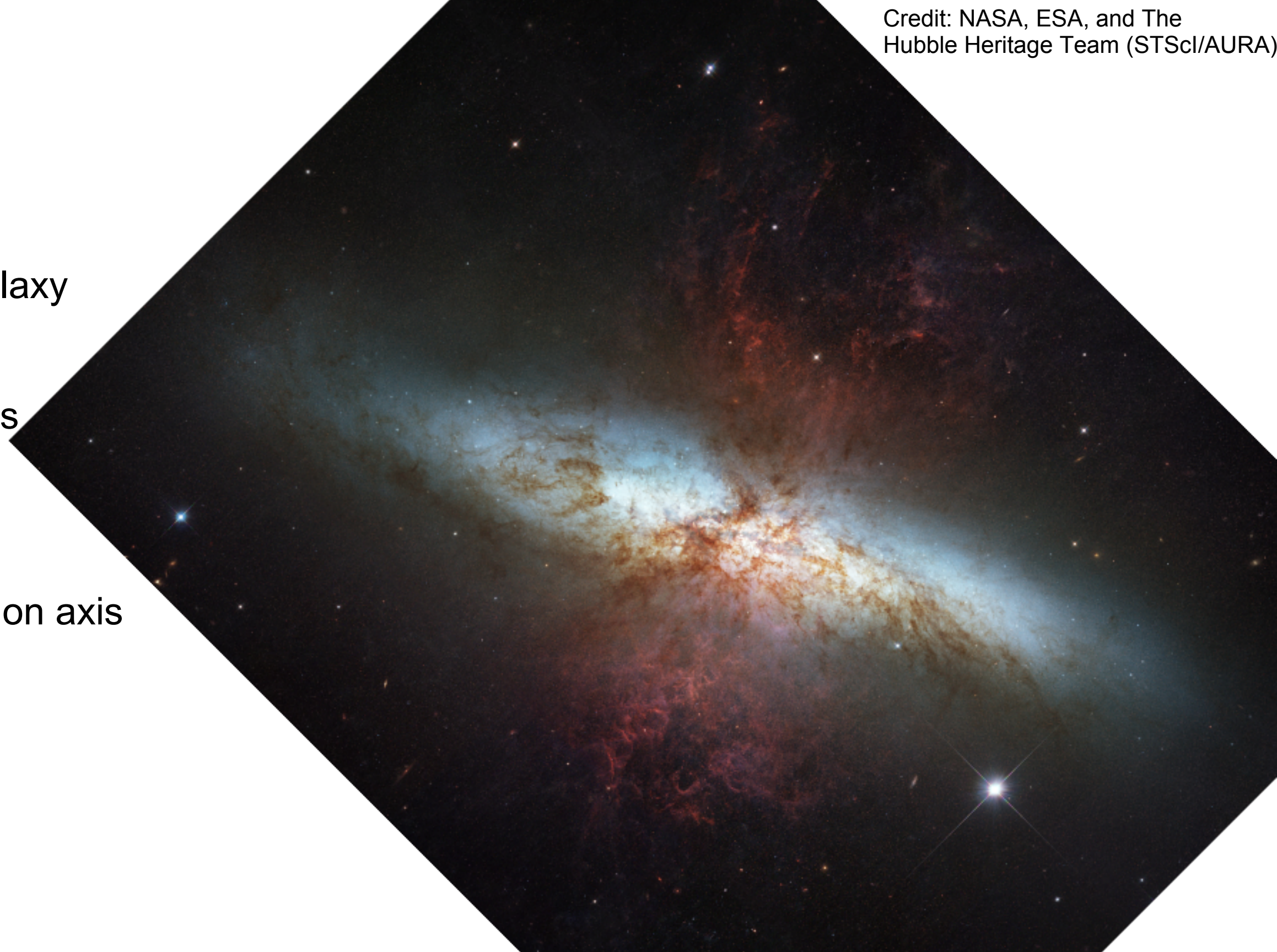
Leiden Observatory

LOFAR Science 2016
Zandvoort aan Zee



M82

- Nuclear starburst galaxy
- Distance 3.7 Mpc
- Velocity 203 ± 4 km/s
- Strong filamentary
H α -streamers in the
direction of the rotation axis
- Interacting with M81



M82

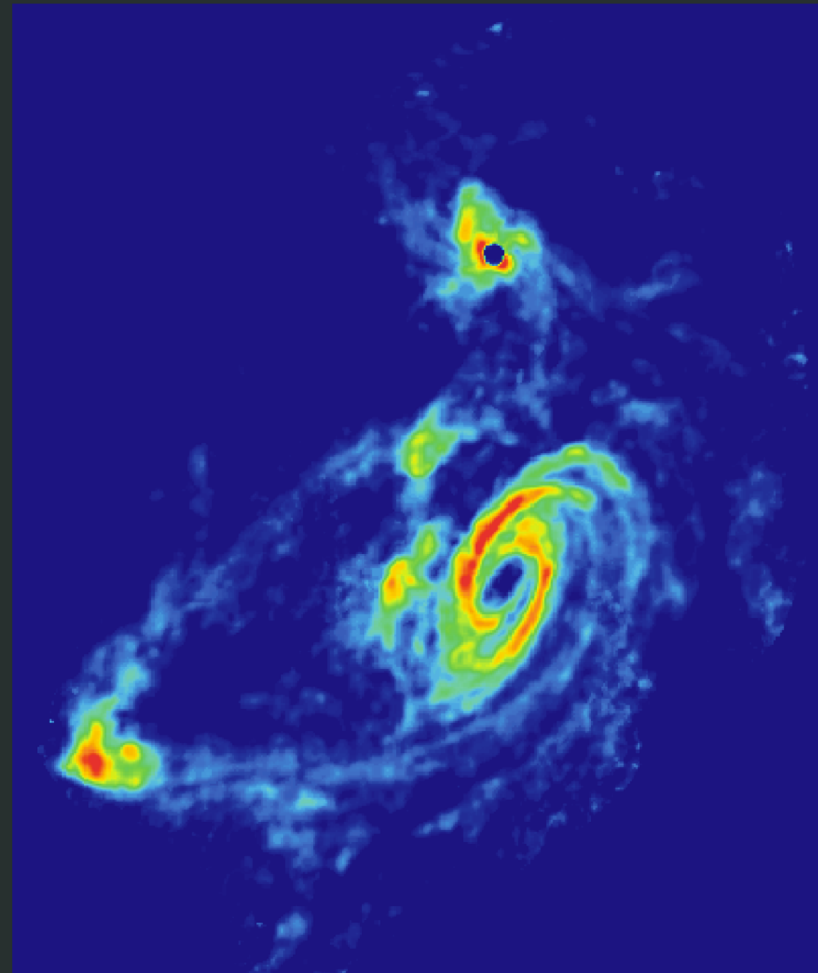
Credit: Yun, Ho and Lo. Image courtesy of NRAO/AUI

TIDAL INTERACTIONS IN M81 GROUP

Stellar Light Distribution



21 cm HI Distribution

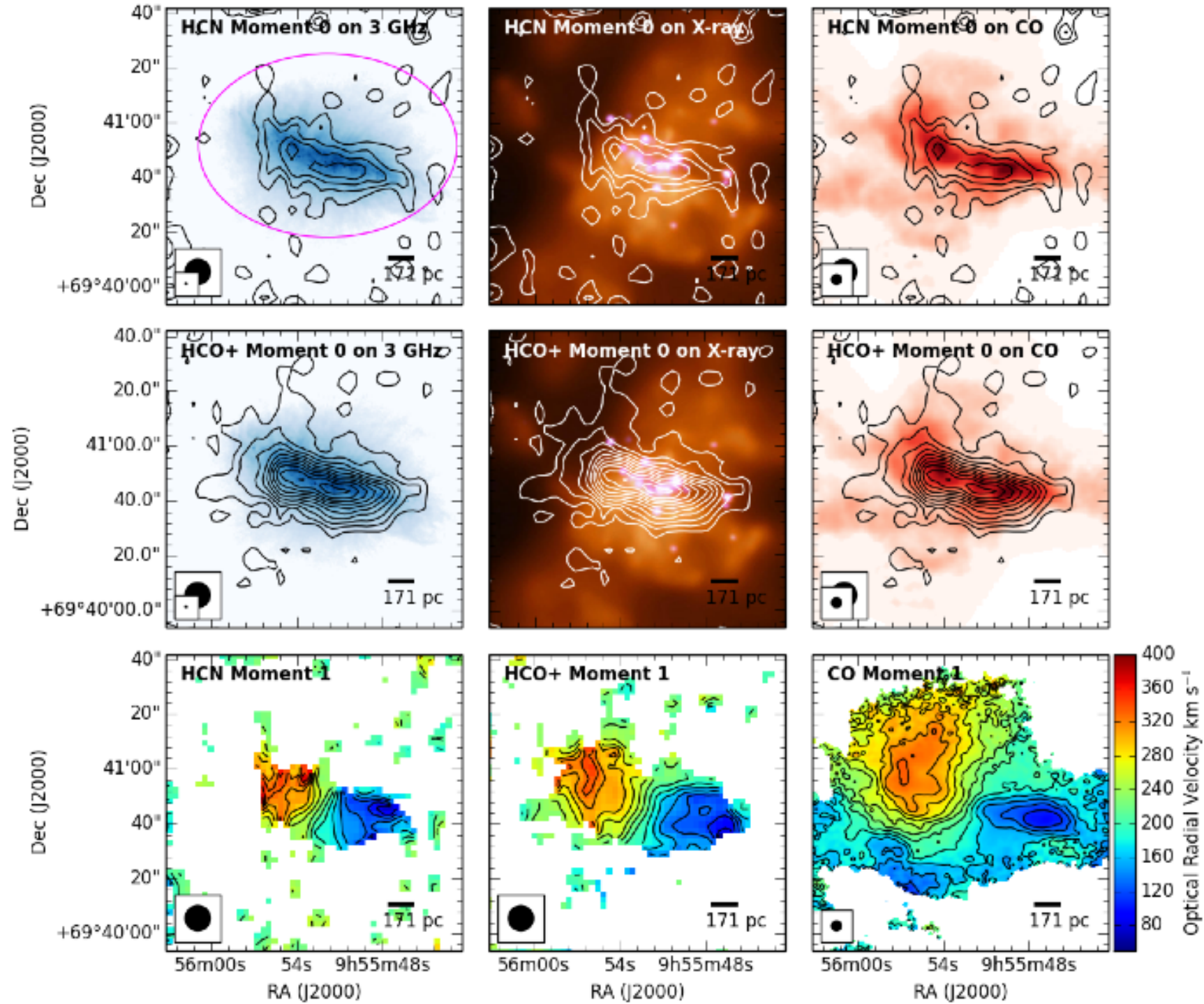


Credit: Johannes Schedler (Panther Observatory)



M82

Dense gas tracing
SF rotating torus
(Kepley+2014)



Diffuse Radio Recombination Lines (<1GHz)

The line profiles are determined by the

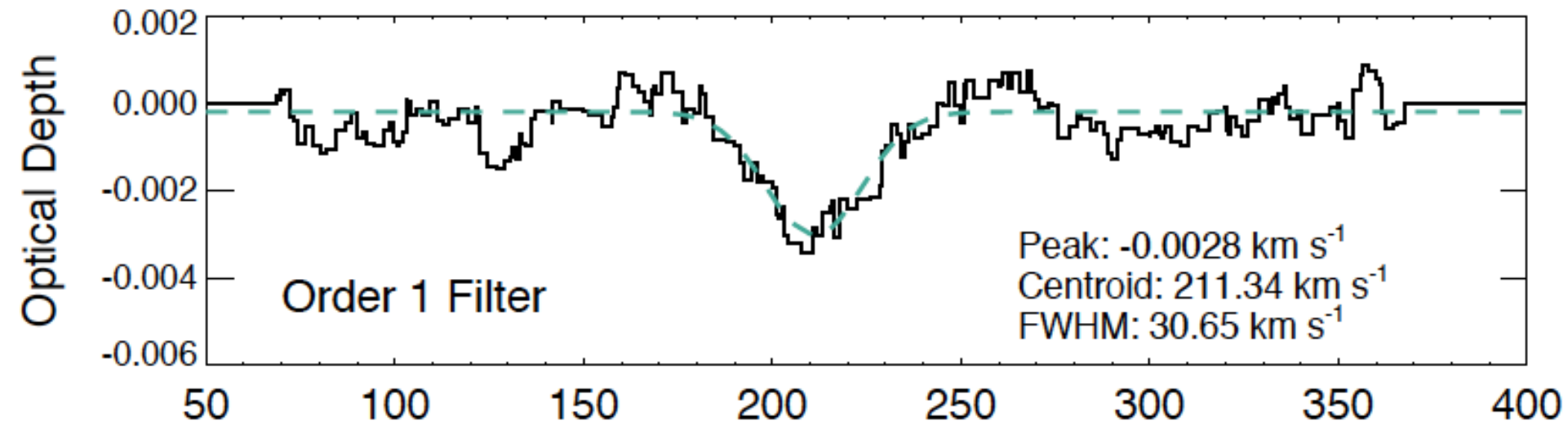
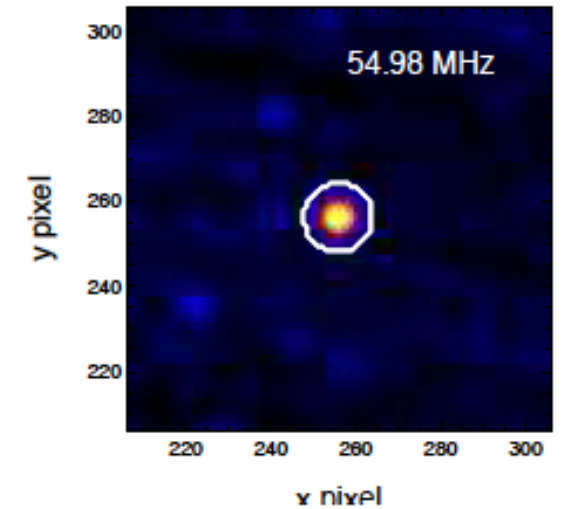
- Thermal properties of RRL gas (T_e, n_e, \mathbf{EM})
- Ionization rate of the RRL gas ($\zeta(\mathbf{H})$)
- Carbon abundance ($[\mathbf{C}/\mathbf{H}]$)
- Kinematics of the RRL gas ($\mathbf{v}, \Delta\mathbf{v}$)

>> Method: Localize the (C)RRL gas & compare with CO, HI and HII in order to probe the properties of the CNM.

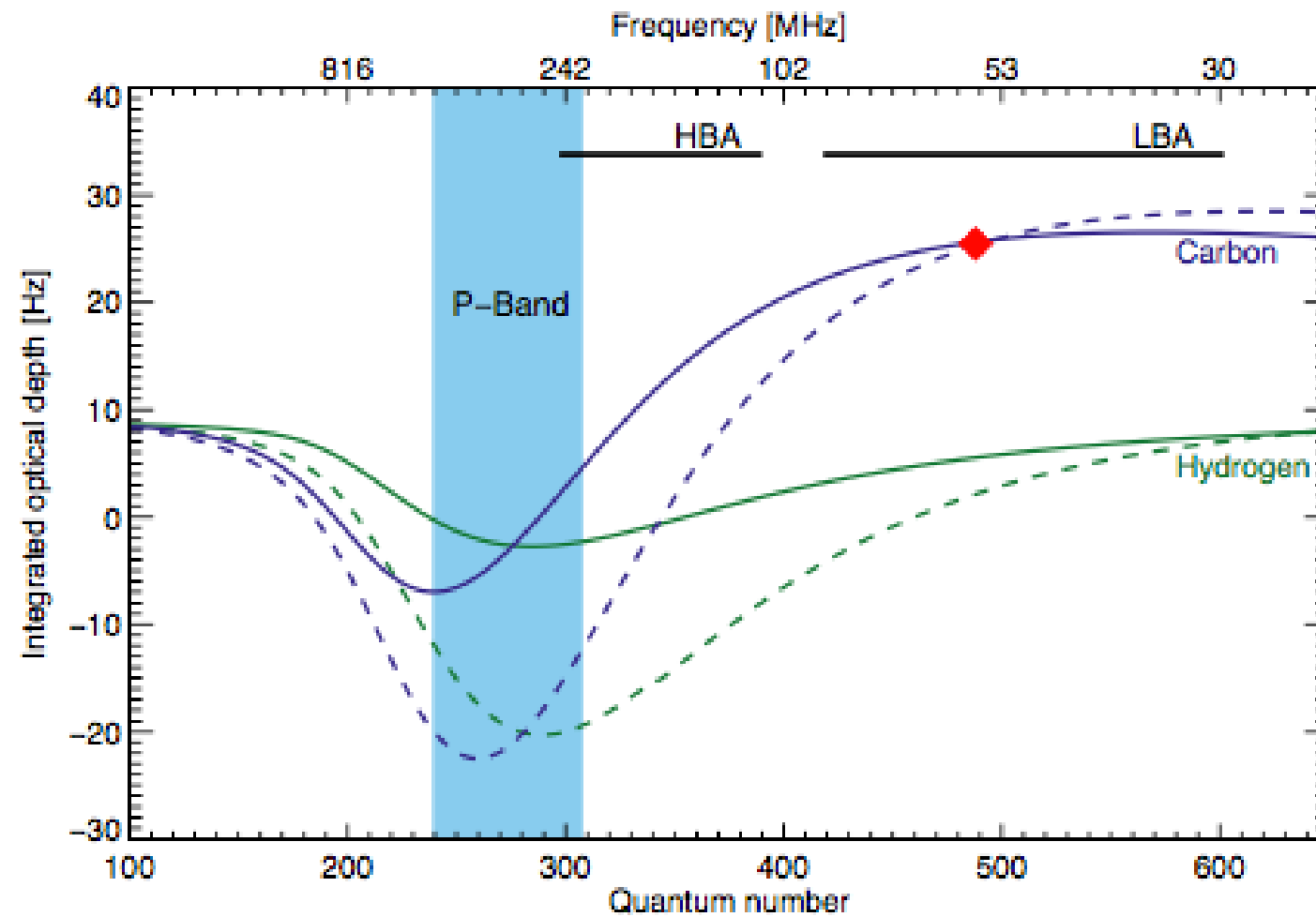
LBA measurements (30-78 MHz)

Morabito et al. 2014:

First detection of CRRLs from an extragalactic source



(32channels/subband, stacking 22 subbands)



◆ LOFAR LBA

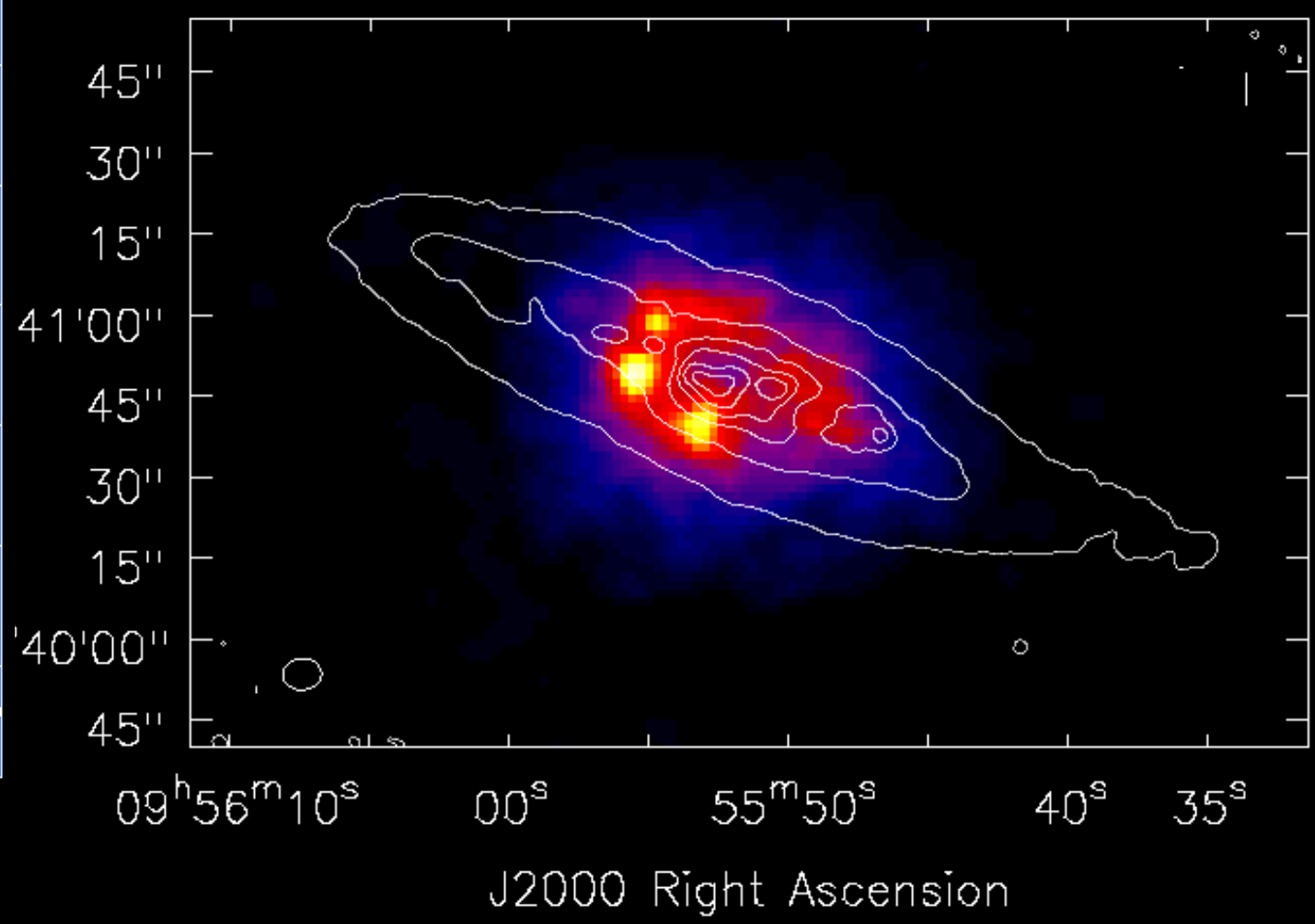
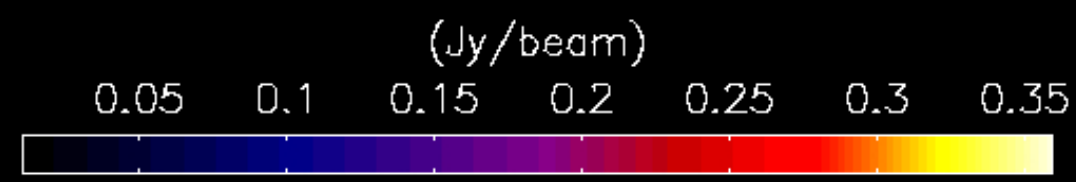
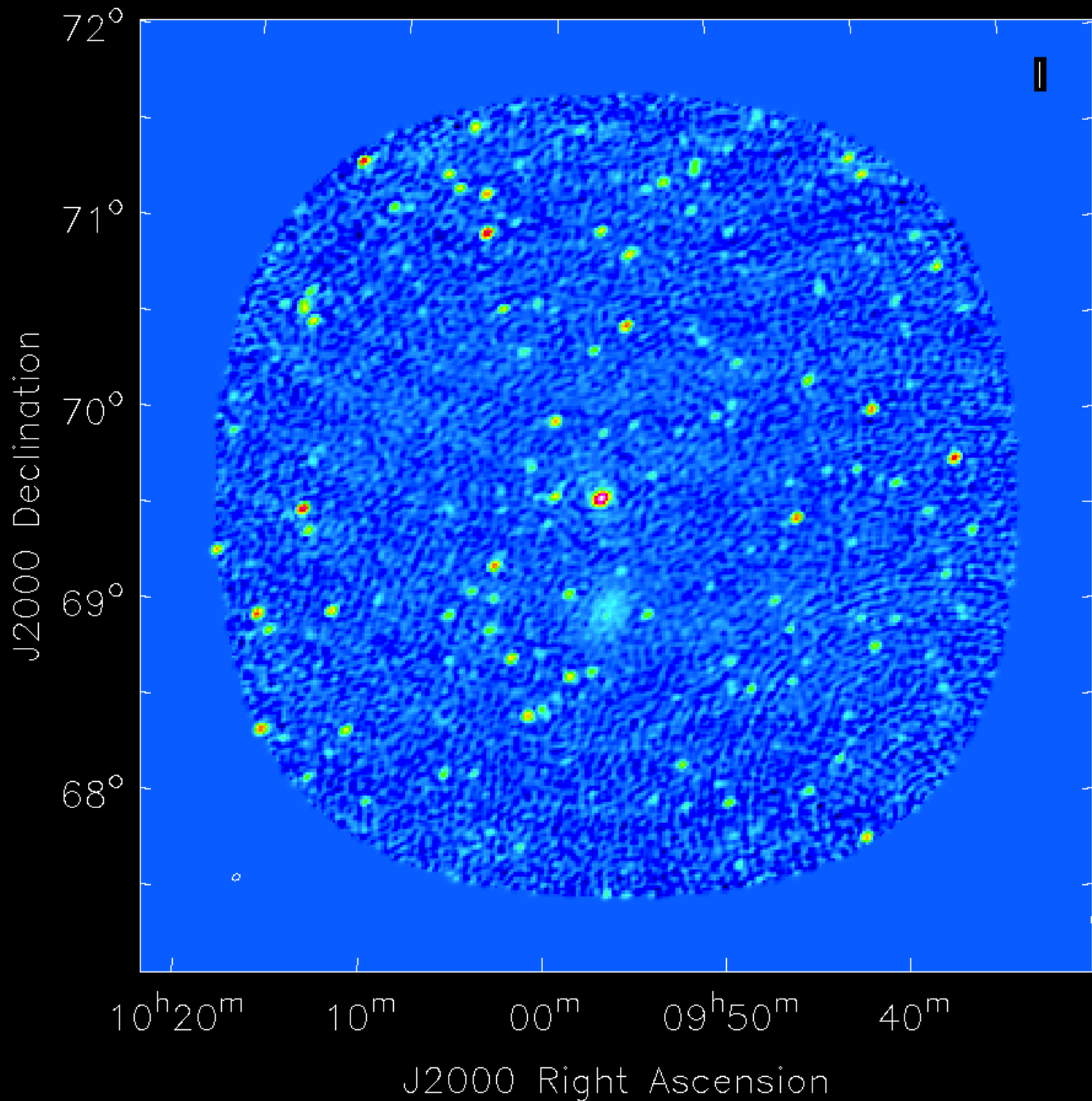
$n_e = 0.05 \text{ cm}^{-3}$

--- $T_e = 50\text{K}$

— $T_e = 100\text{K}$

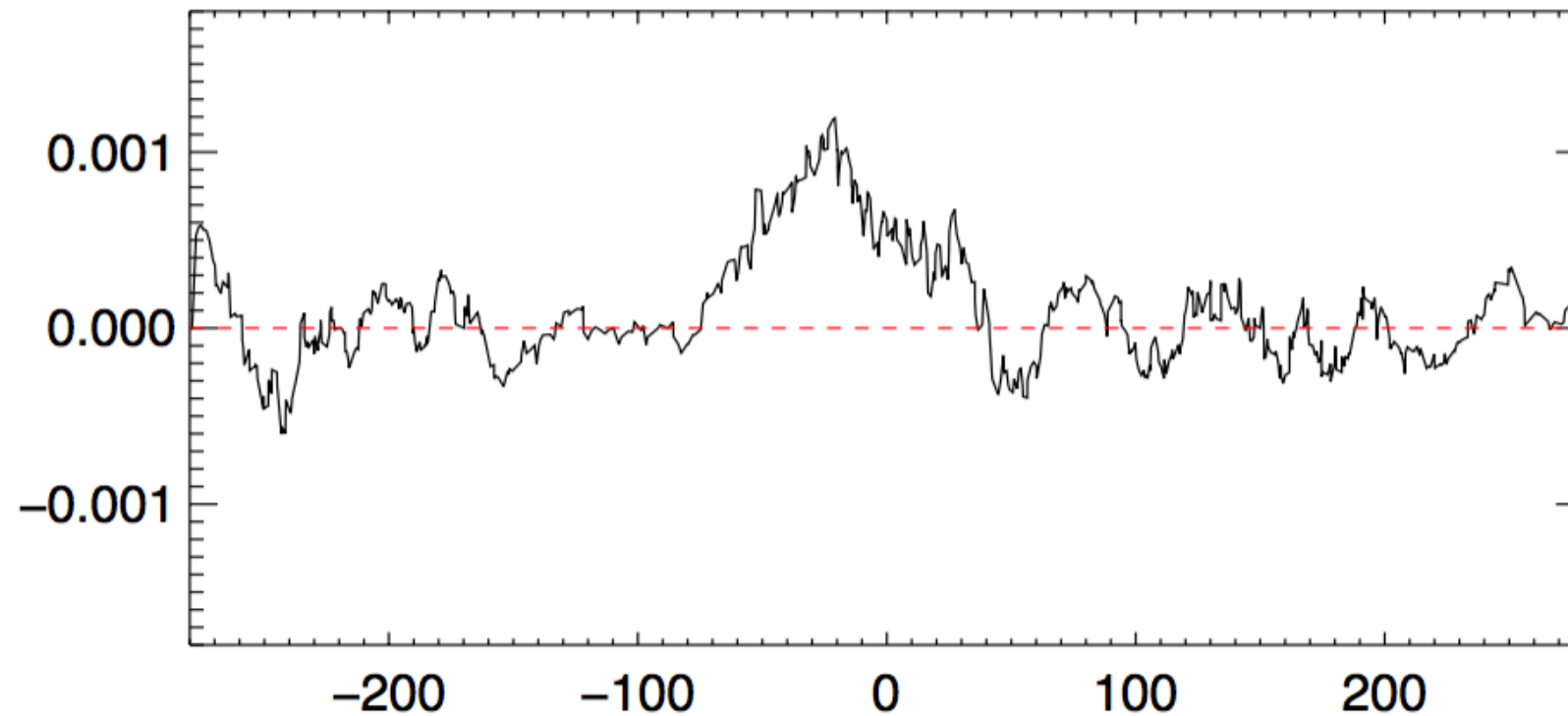
Expand the frequency range to break the degeneracy among the models.

HBA measurements (110-190 MHz)



HBA measurements (152-174 MHz)

Stacking 30 subbands at the same $z(=0.0073)$ as the LBA detection



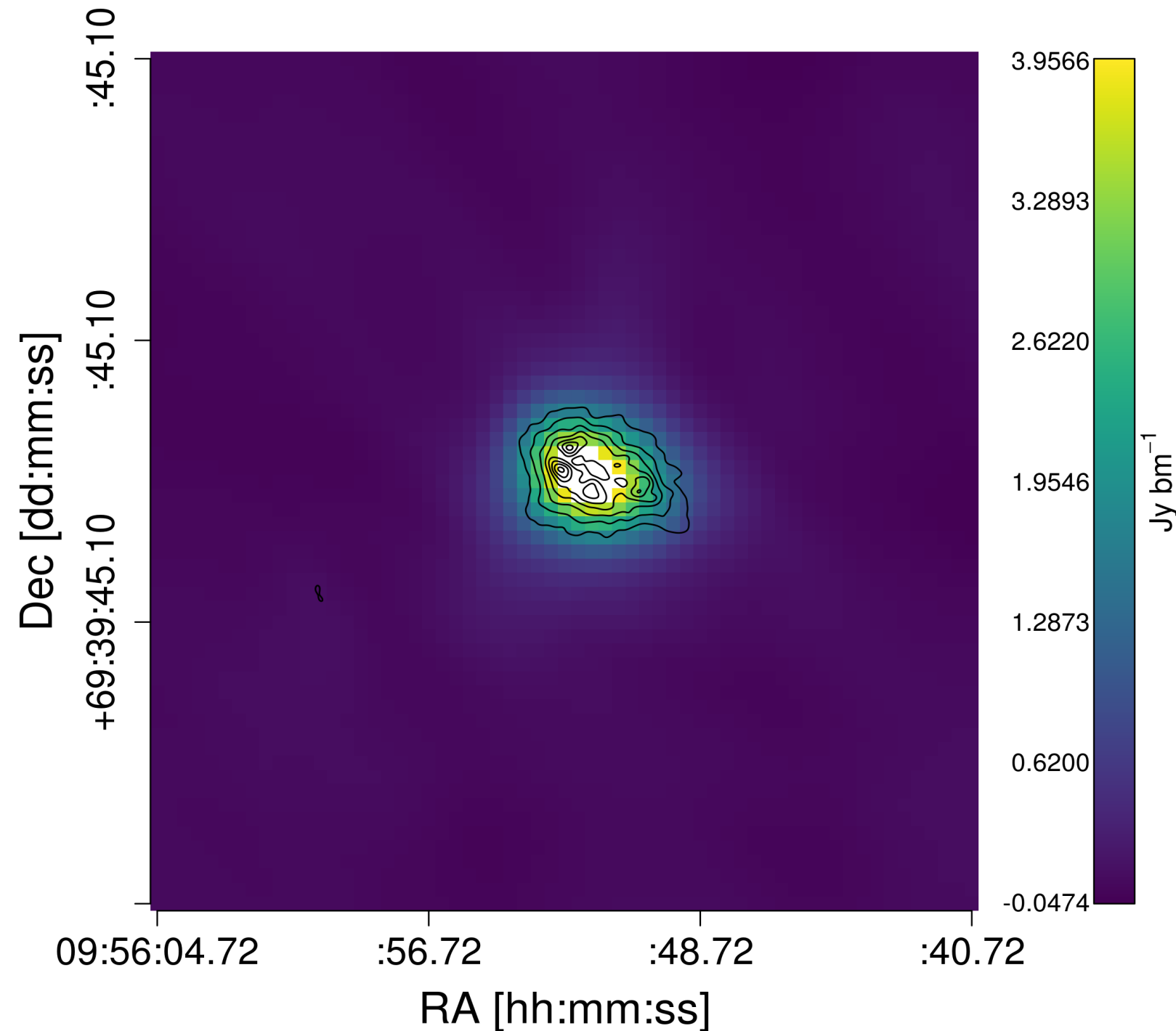
Ongoing:

- Cross-correlation to fine-tune the redshift of the HBA detection
- LBA+HBA+JVLA P-band to constrain the properties of the gas

Future:

- Analyze HBA CS+RS spectra

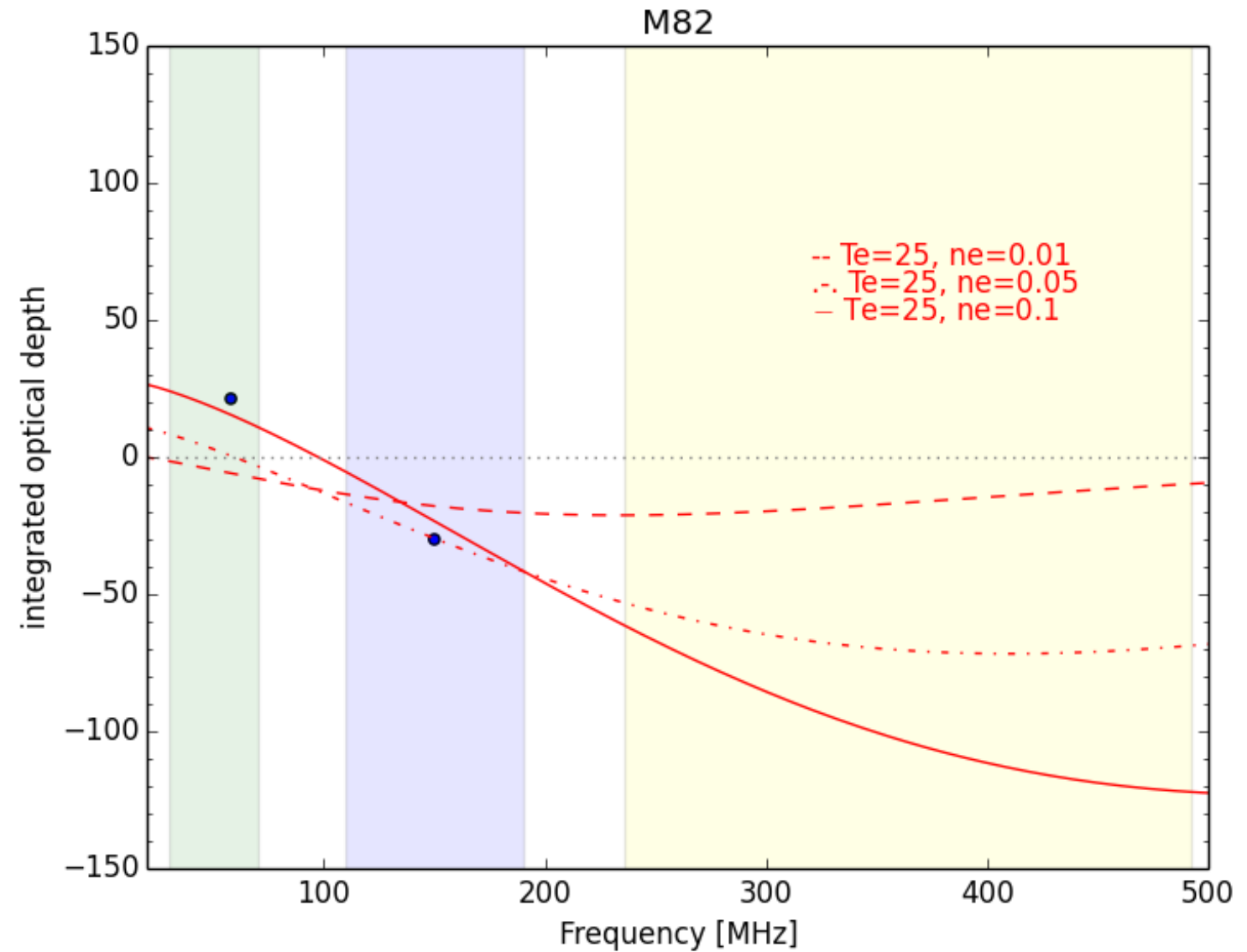
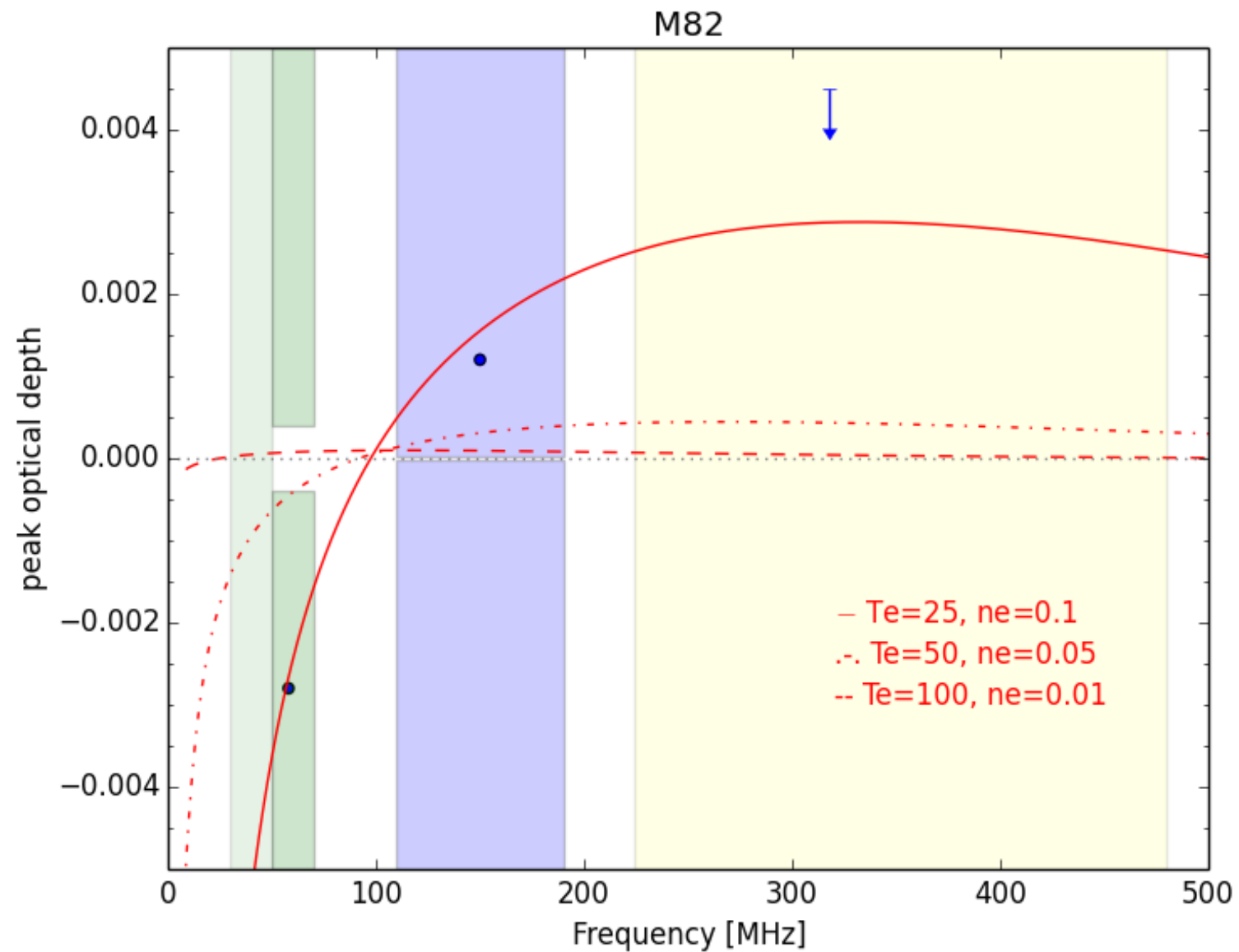
JVLA P-band image



- MFS image of 1 spectral window: 291 MHz (32 MHz bandwidth)
- 1 hour on target
- Contours from LOFAR HBA CS+RS
- RMS 14 mJy
- Biggest challenge: RFI

Credit: S.L. Zoutendijk

Model LOFAR LBA+HBA+JVLA P-band



What can we say about the properties of the gas?