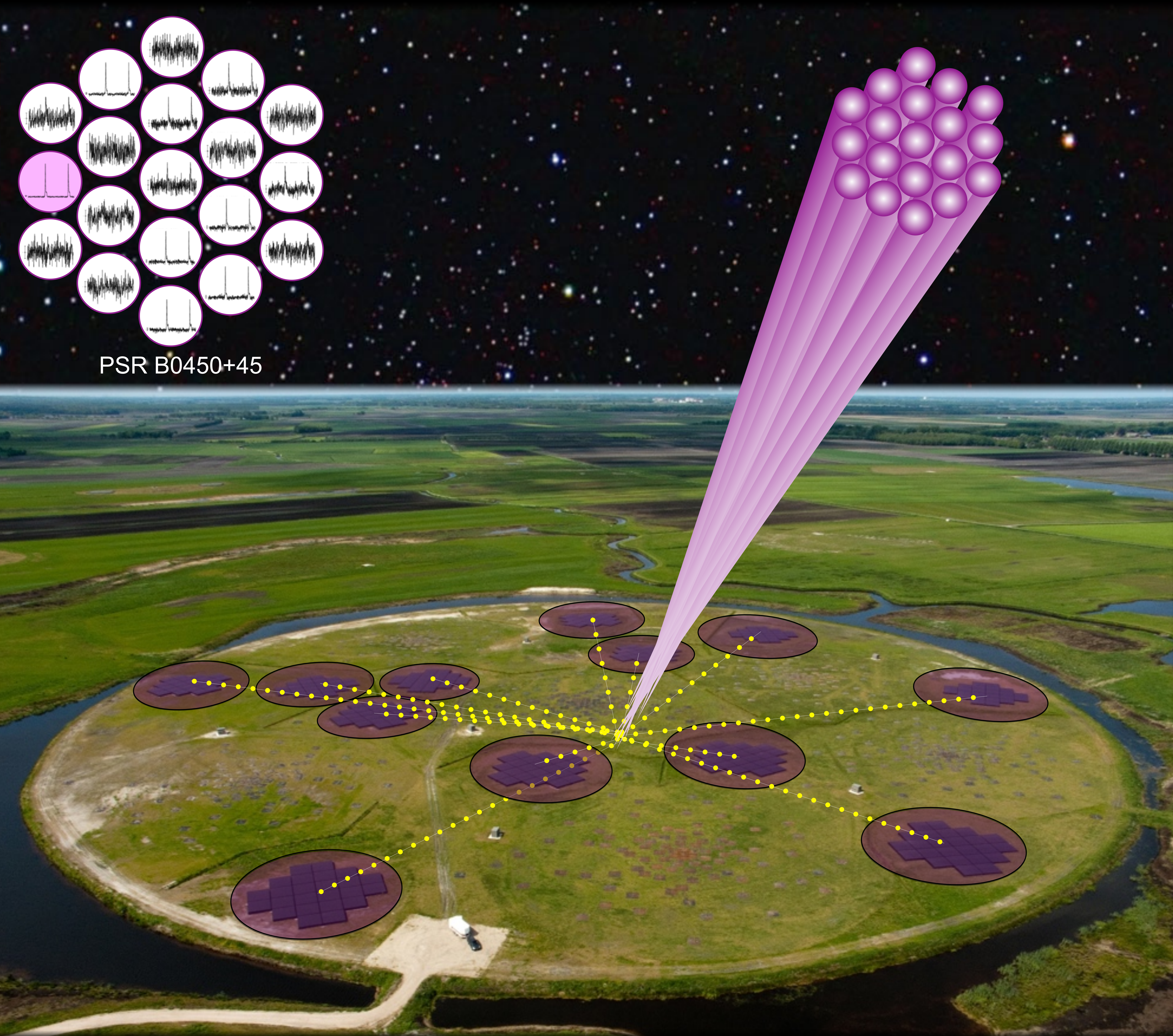
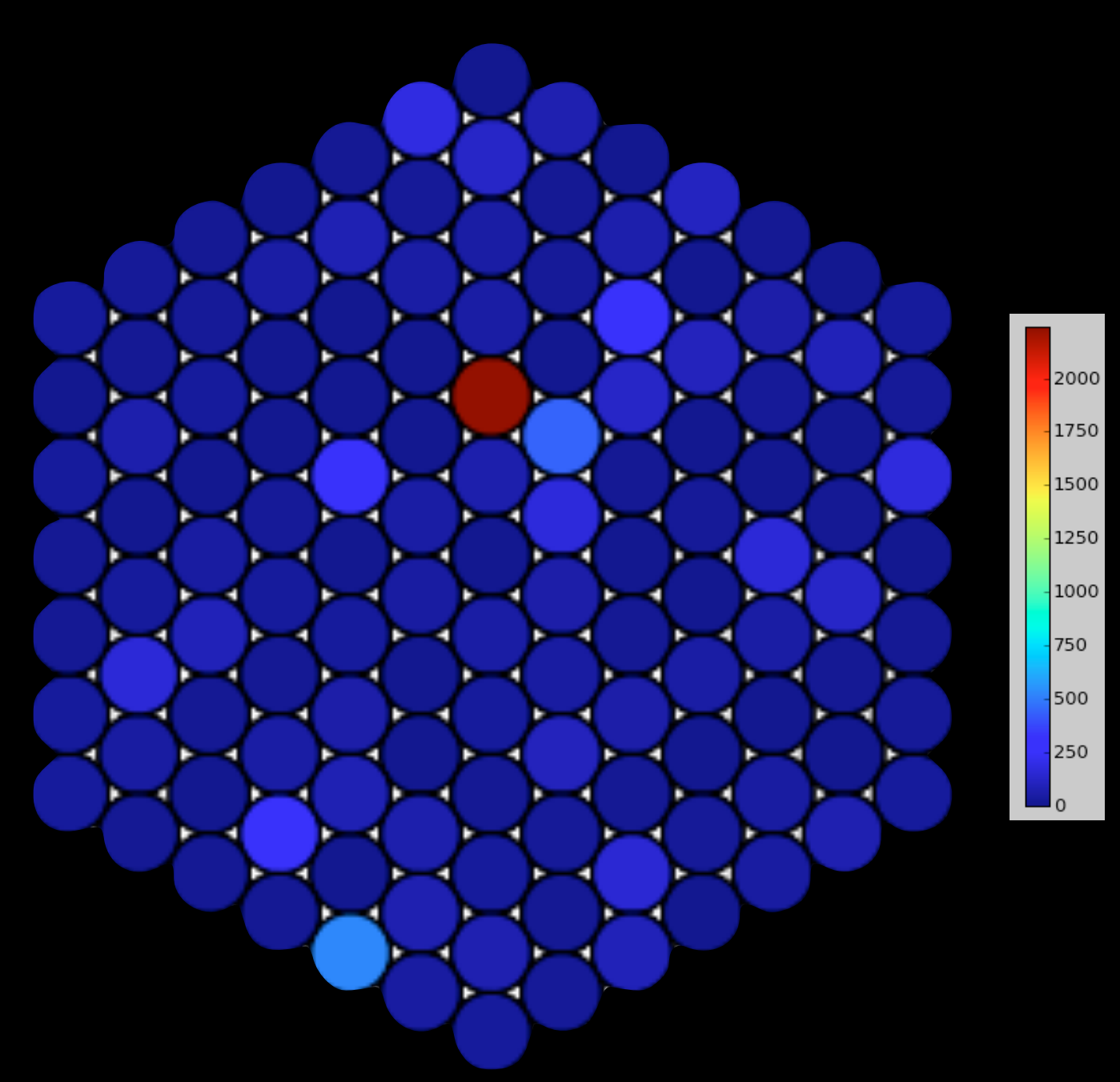




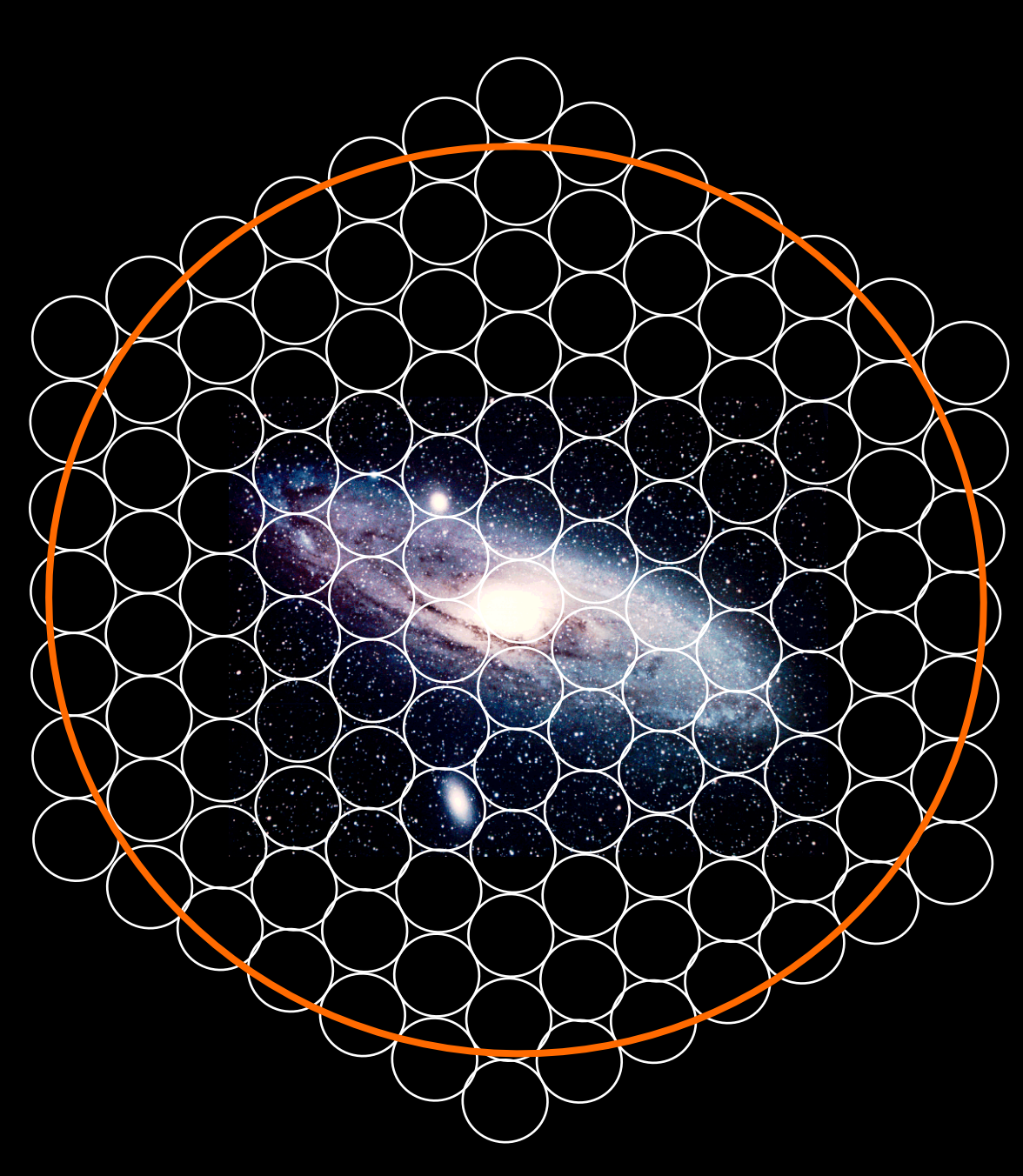
PSR B0450+45



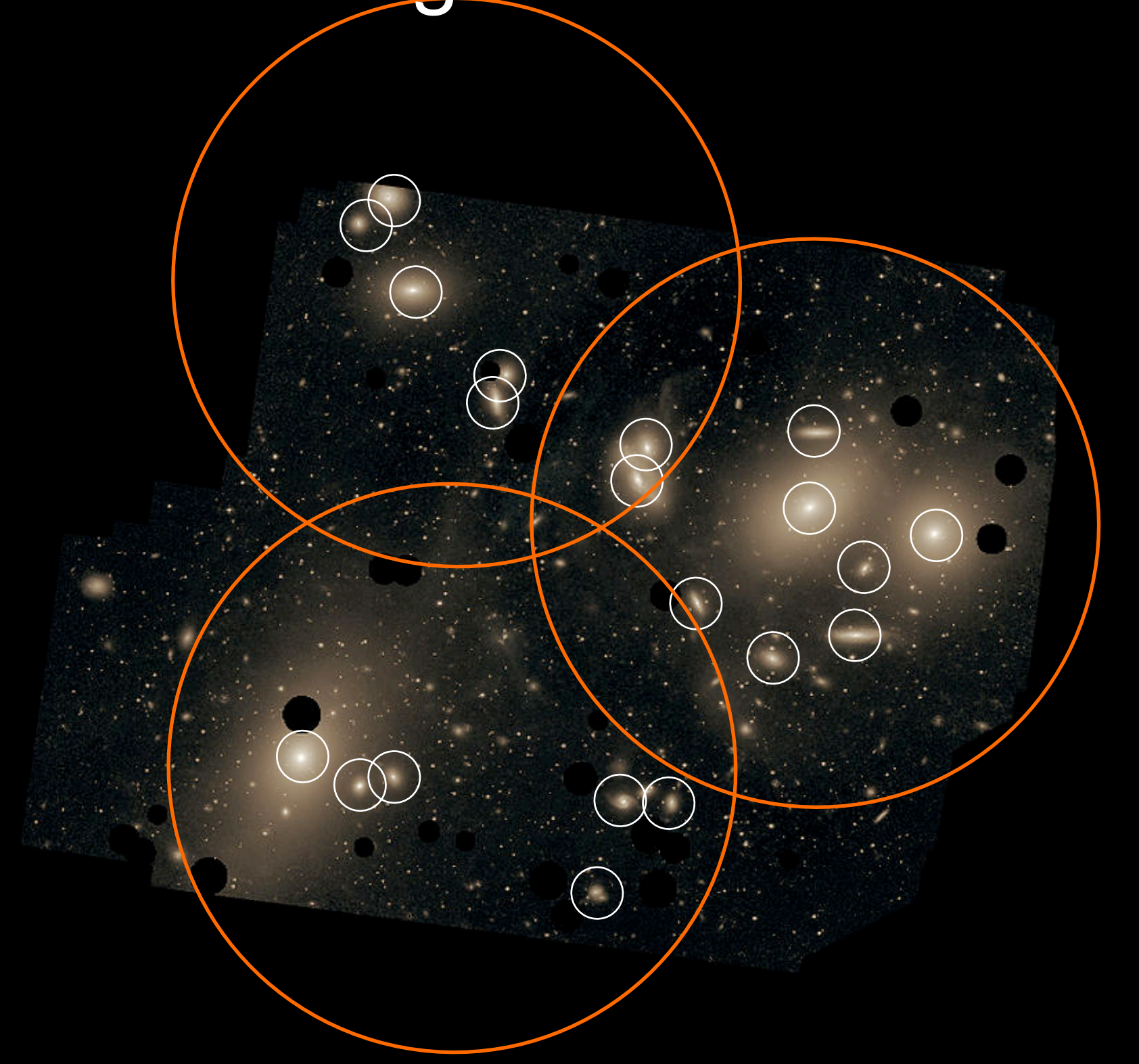
127 Tied-Array Beams



Andromeda



Virgo Cluster



LOFAR offers a flexible multi-beam “tied-array” mode for high-time-resolution observations of pulsars and other fast transients. *Center:* Artist’s impression of tied-array beams formed with the LOFAR Superterp stations. *Top Left:* A 19-beam observation of PSR B0450+55. *Bottom Left:* A 127-beam tied-array observation of PSR B2217+27. The color coding shows the S/N in each beam, with the maximum achieved at the position of the pulsar. *Bottom Center:* Artist’s impression of a 127-beam observation of the Andromeda galaxy. *Bottom Right:* Artist’s impression of a tied-array observation of the bright galaxies in the Virgo Cluster.

ASTRON

Netherlands Institute for Radio Astronomy

