

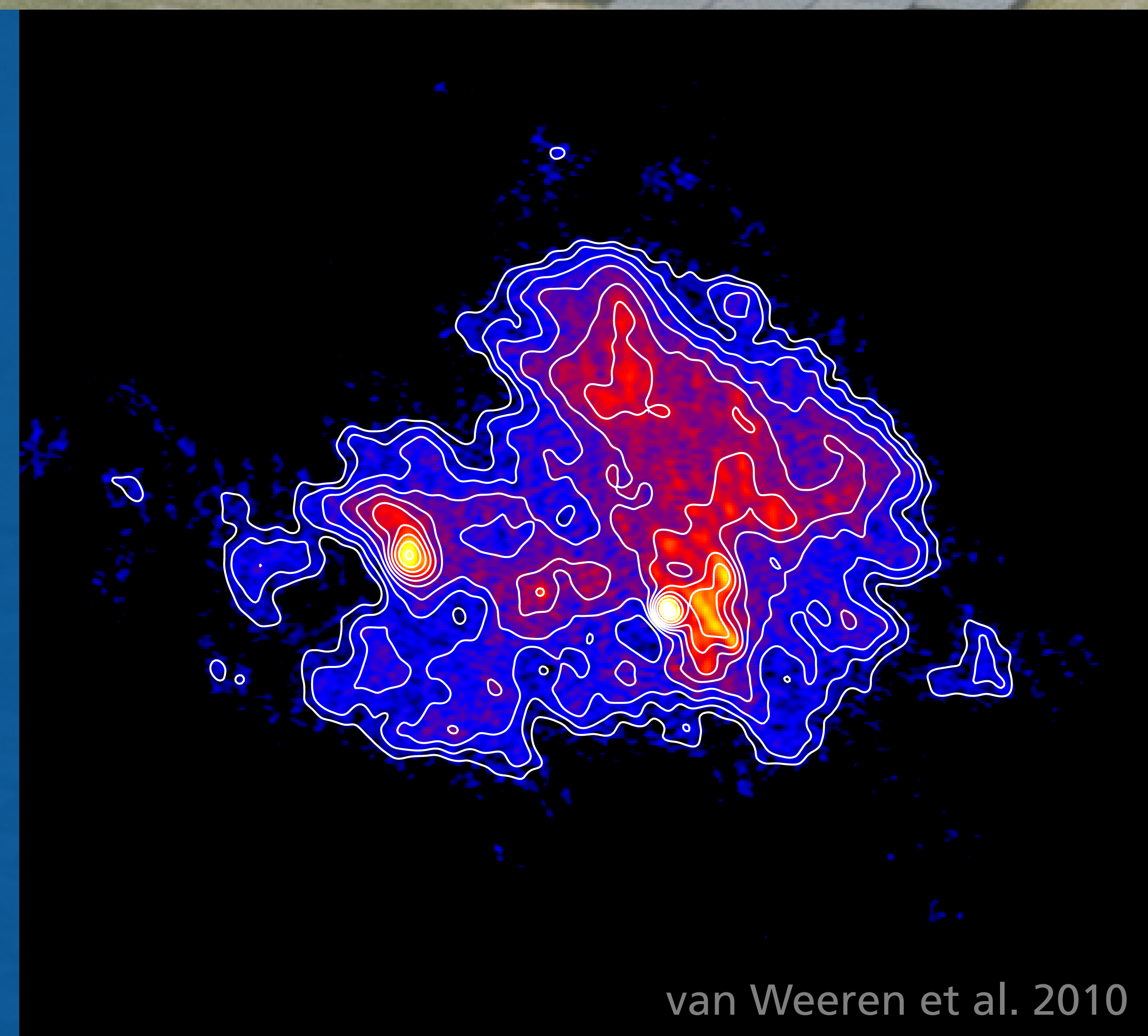
LOFAR Operational

The Queen of The Netherlands opened LOFAR in June 2010.



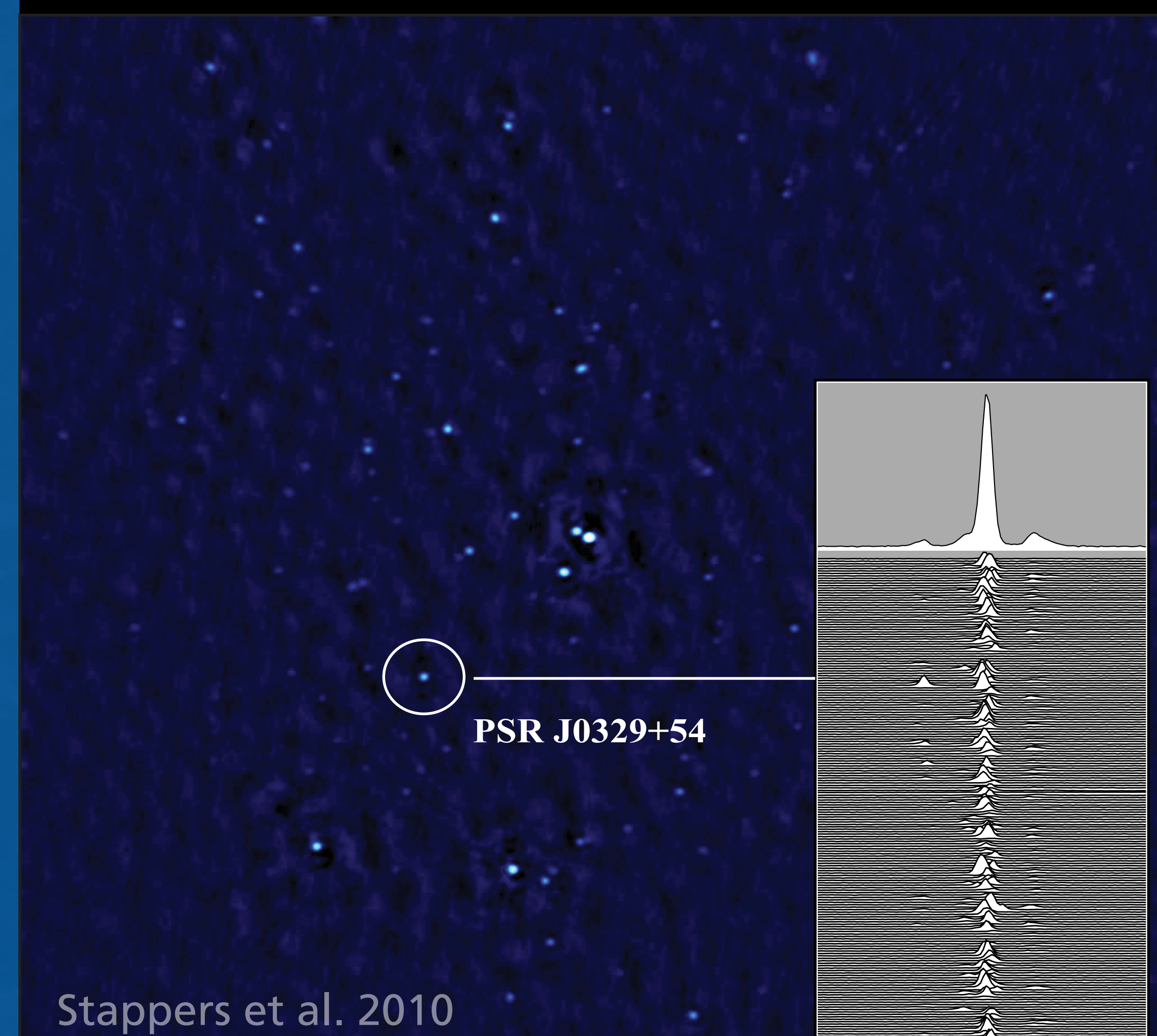
First Science & Results

The cluster of galaxies A2256 at $z = 0.058$. Beside several tailed galaxies and the relic structures, the image shows for the first time a spatially resolved central halo of A2256 at low frequencies.



van Weeren et al. 2010

Simultaneous imaging and beam-formed data on pulsar B0329+54. The observed low-frequency multi-path scattering by the interstellar medium is not as predicted.



Stappers et al. 2010



The LOFAR Antennas

Three zoom-outs of the LOFAR core. Different scales of the hierarchically organised high-band elements are highlighted. Fields of the sparse low-band antennas are visible in between.

