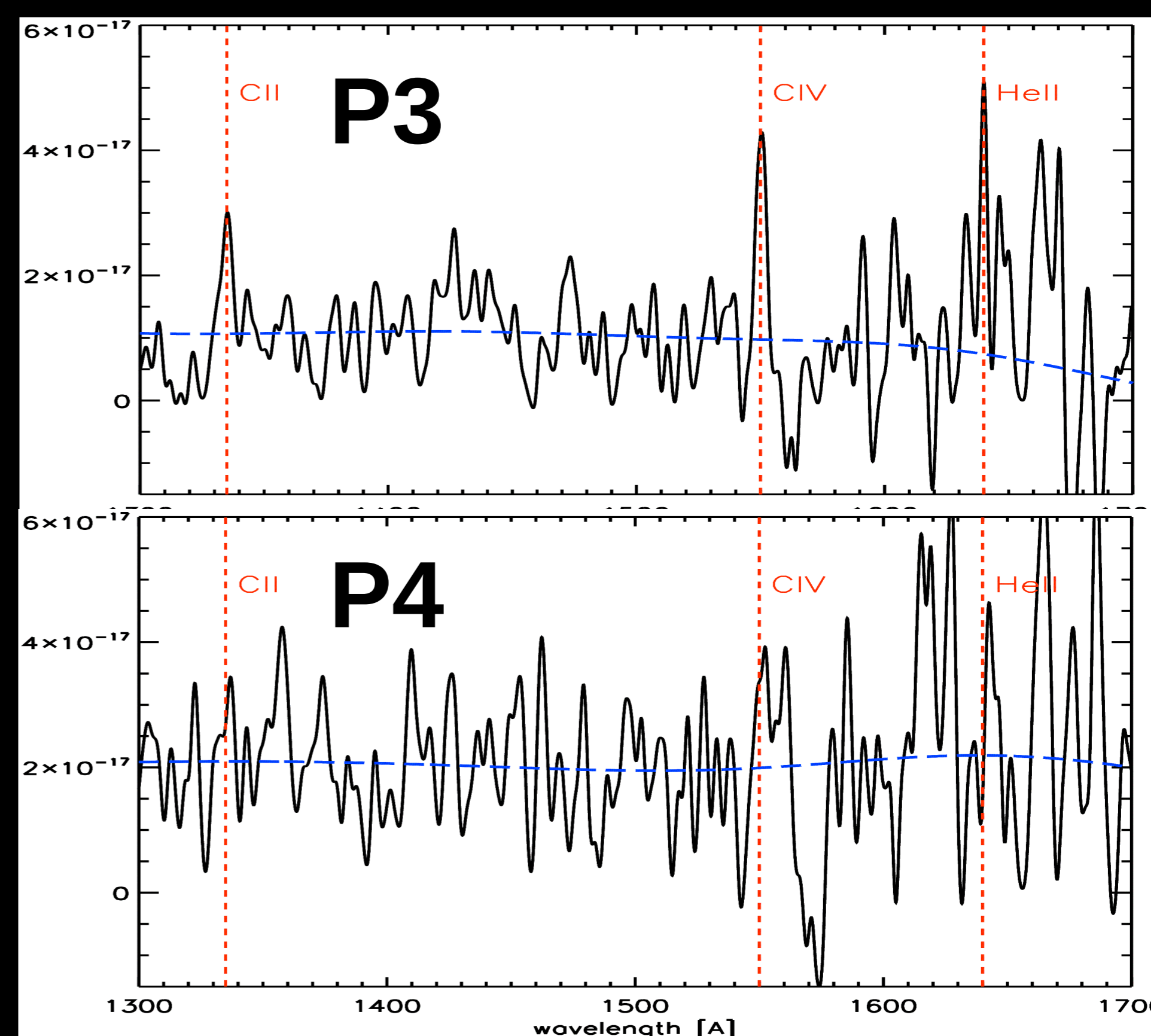
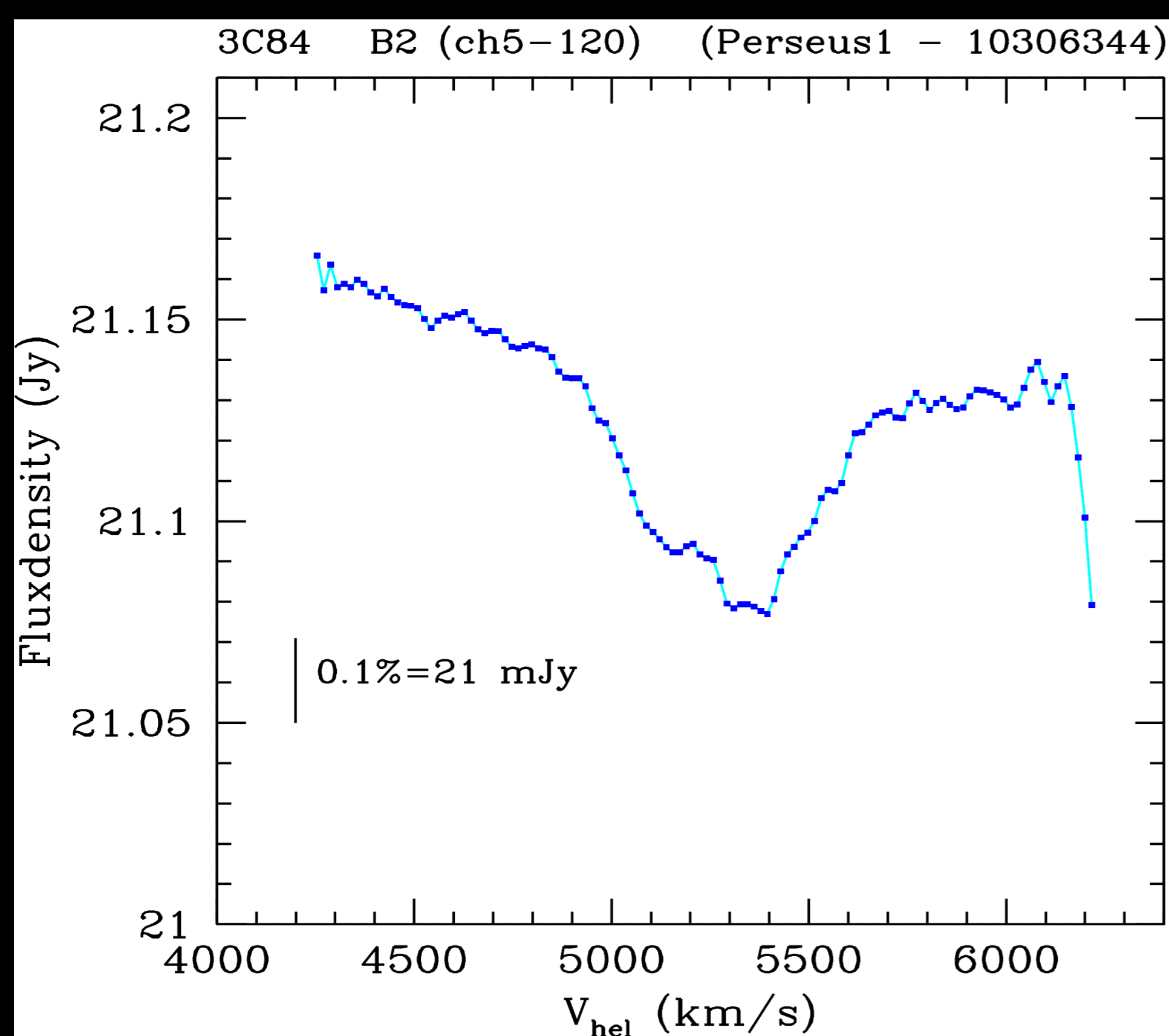
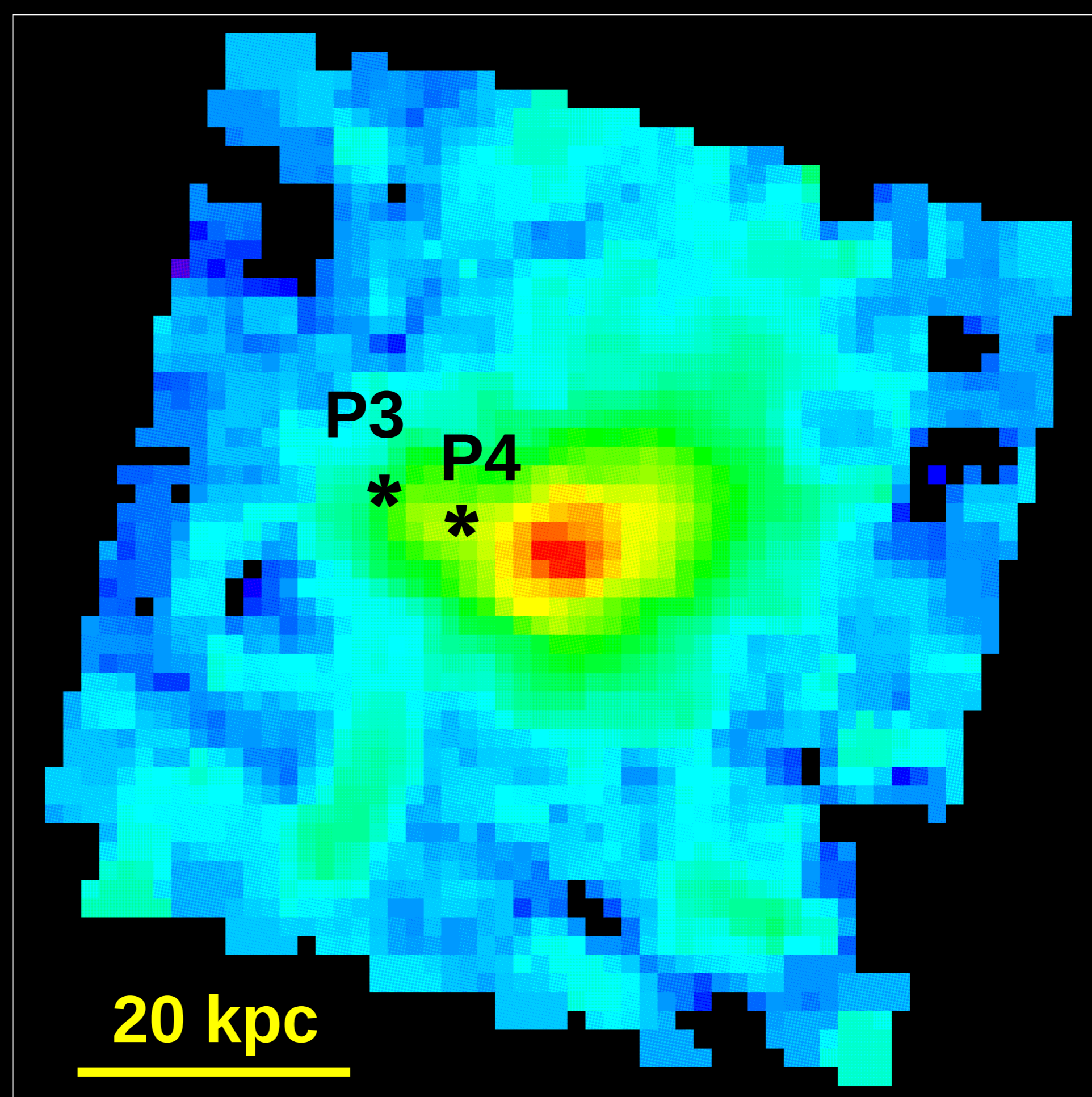
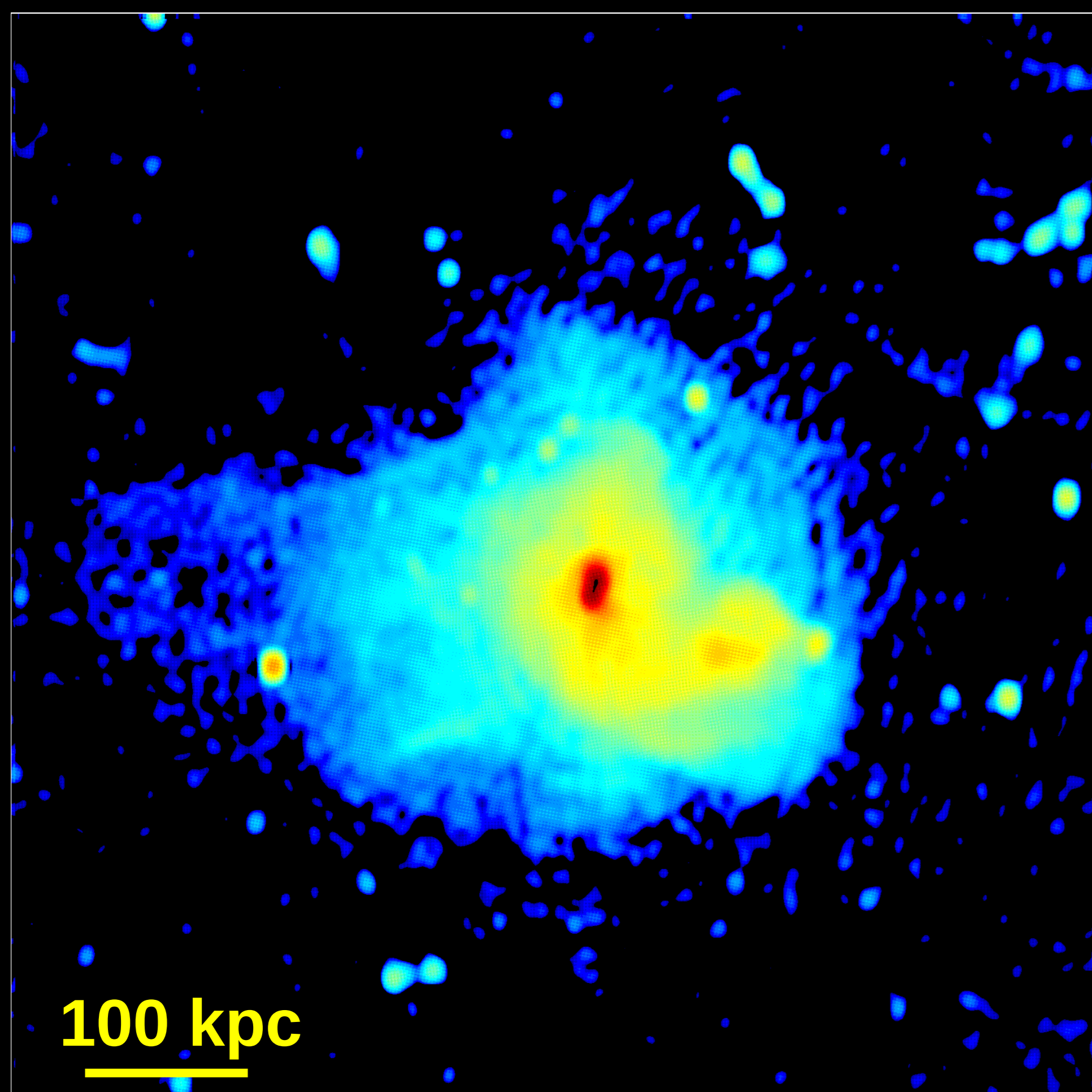


The multiphase medium in Perseus



(Top) 1.4 GHz radio continuum emission surrounding NGC 1275 at the heart of the Perseus cluster (WSRT, de Bruyn et al. In prep.).

(Bottom) Broad HI absorption against the central radio source in NGC 1275. Narrower components indicative of dynamically colder gas have also been detected (WSRT, de Bruyn et al. In prep.).

(Top) [CII] 157 micron emission map of NGC 1275 with *Herschel-PACS*. The gas filaments, at 20 kpc from the nucleus, are clearly detected (Mittal, Oonk et al. in prep.).

(Bottom) First off-nuclear [CIV] 1549 Å detection in NGC 1275 with *HST-COS*. This line shows the presence of hot gas (10^5 K) coexisting with cold gas (Oonk et al. In prep.).

