



IS-GE1 Effelsberg MPIfR Bonn

Installation complete !
March 2007



Wolfgang Reich
LOFAR Project Manager at MPIfR
Bonn

IS-GE1 as seen from the 100-m telescope



HBA field

LBA field

21.03.2007

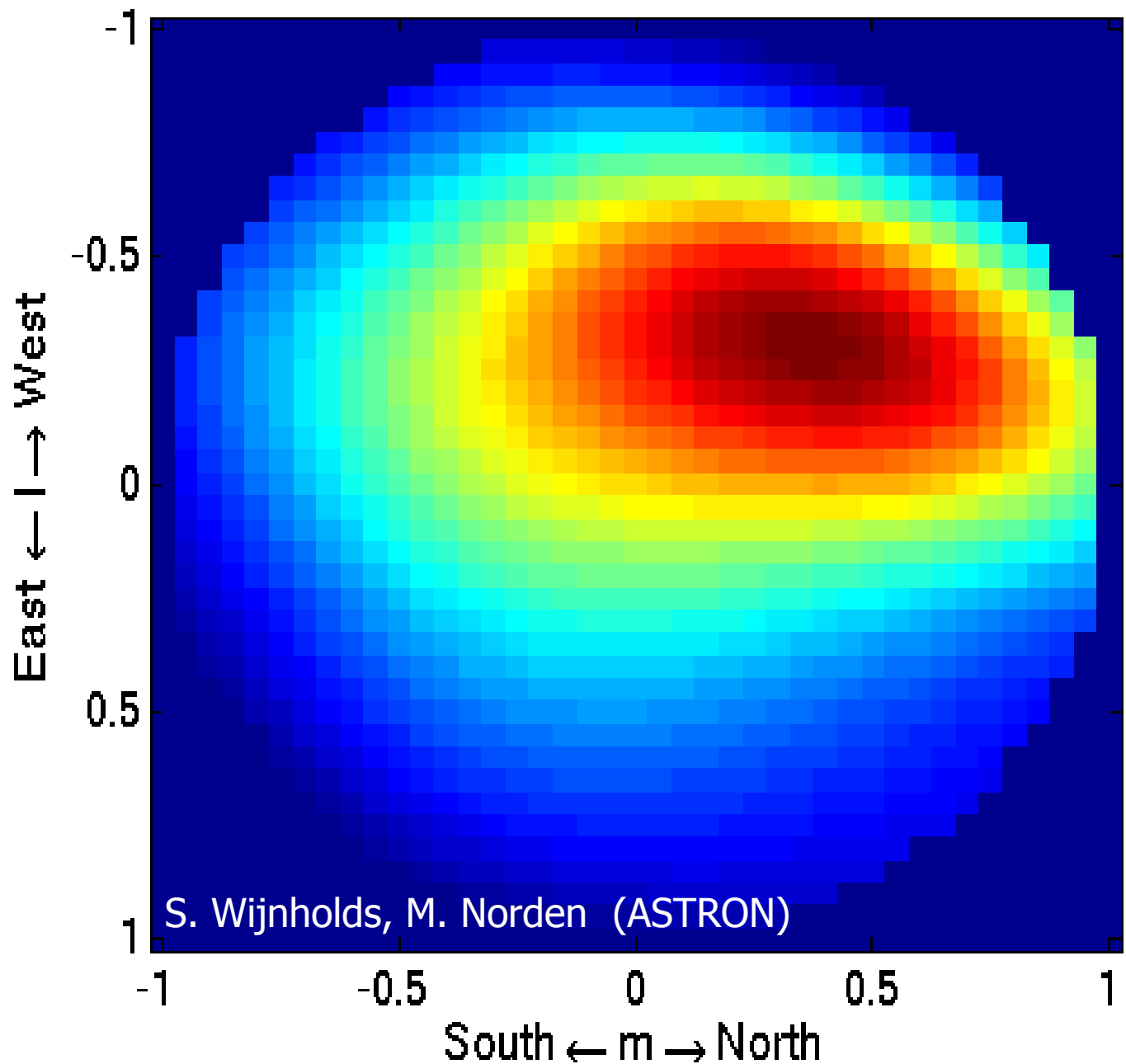


21.04.2007

„First
Light“
at
Effelsberg
IS-GE1
20.03.2007

8 dipoles x2
polarizations
 $\tau=4s$
512 channels
 $\Delta f=156$ KHz

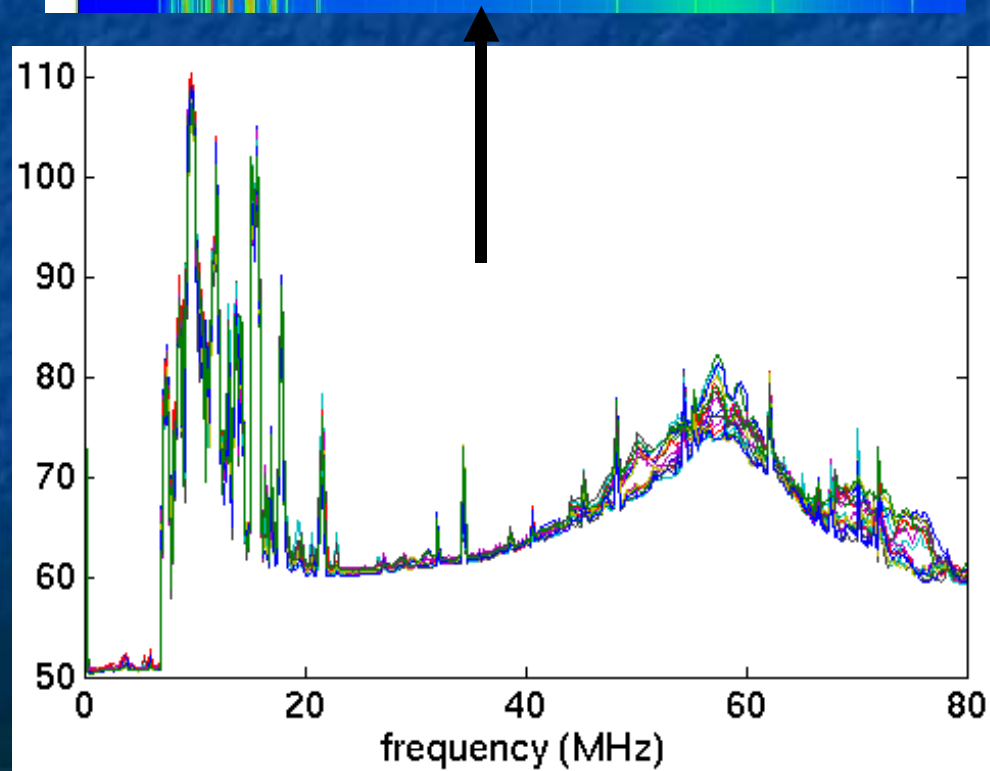
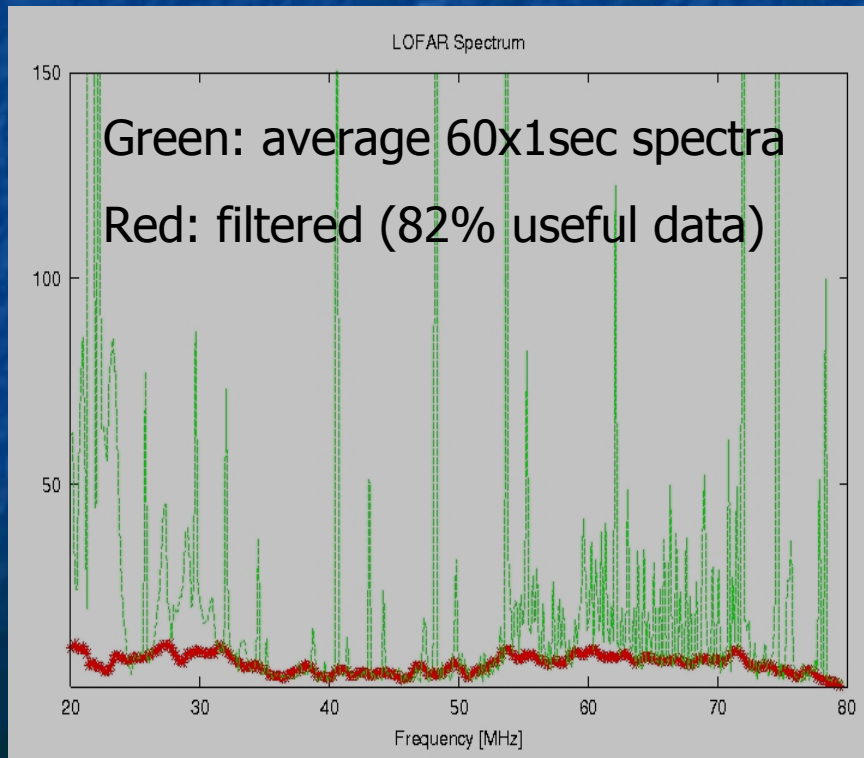
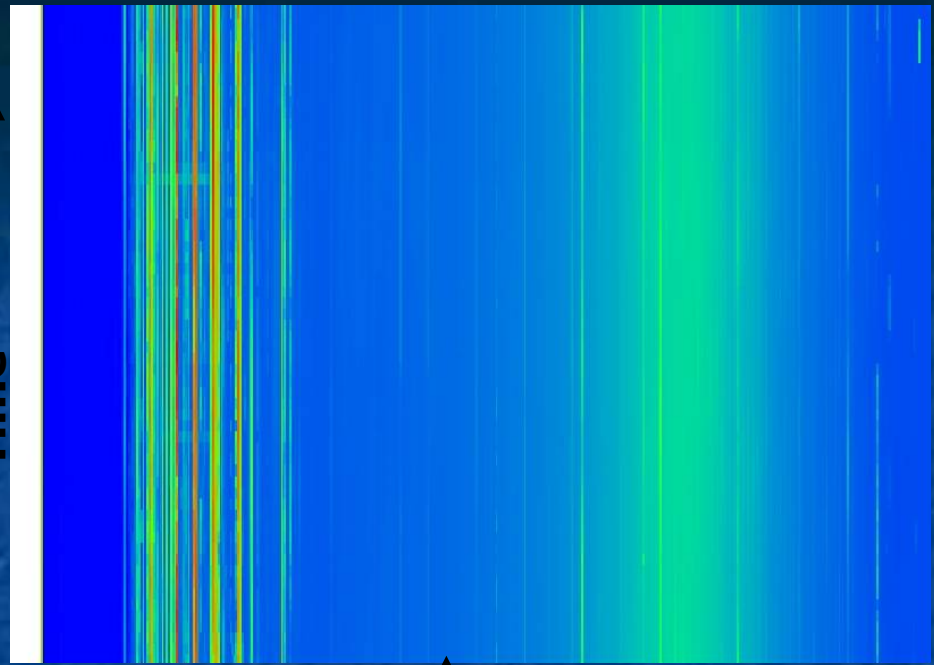
All sky snapshot image at 25 MHz



Spectra from 8 dipoles

IS-GE1 is located in a valley
→ fairly low RFI contamination

Time ↑



LOFAR angular resolution

	30 MHz	75 MHz	120 MHz	240 MHz
Core Exloo 2x3 km	21'	8.3'	5.2'	2.6'
NL LOFAR ~100 km	25"	10"	6"	3.1"
CS1 - IS-GE1 ~250 km	10"	4"	2.4"	1.2"

Own fibre
connection
Effelsberg →
MPIfR Bonn
(>10.2007)
→ FZ Jülich
(DFN ?)
→ Groningen
(SurfNet)

