

LOFAR @ Thüringer Landessternwarte

Matthias Hoeft,
Michael Pluto, Michael Kehr



Transient KSP

Artie Hatzes

Jochen Eislöffel

Surveys KSP

Matthias Hoefft

Alexander Drabent (D-LOFAR3, CITT assoc. member)

Jakob Gelszinnis (PhD)

Kamlesh Rajpurohit (PhD)

Cosmos Dumba (PhD)

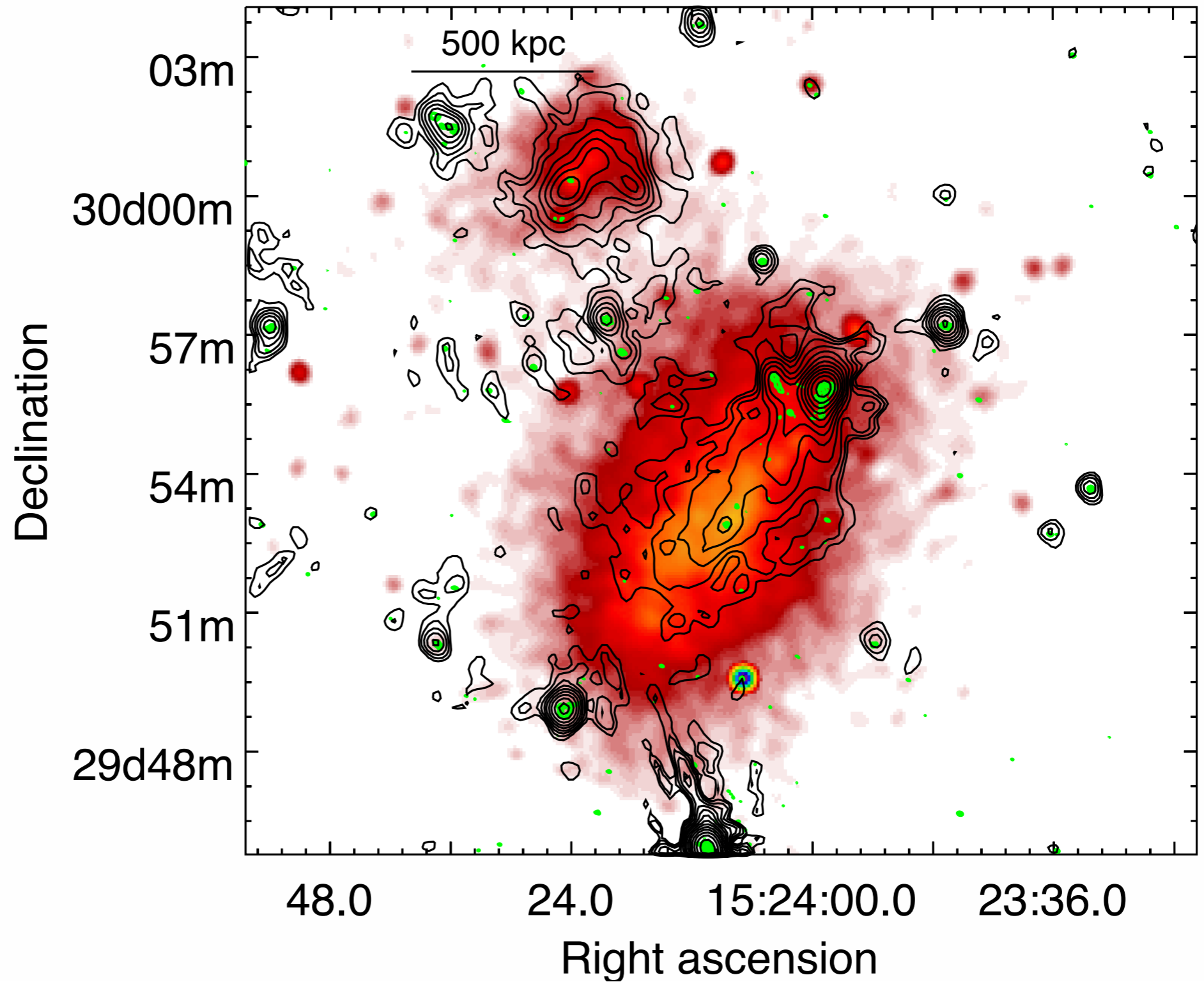
Technical support

Michael Pluto and Michael Kehr (Station hardware)

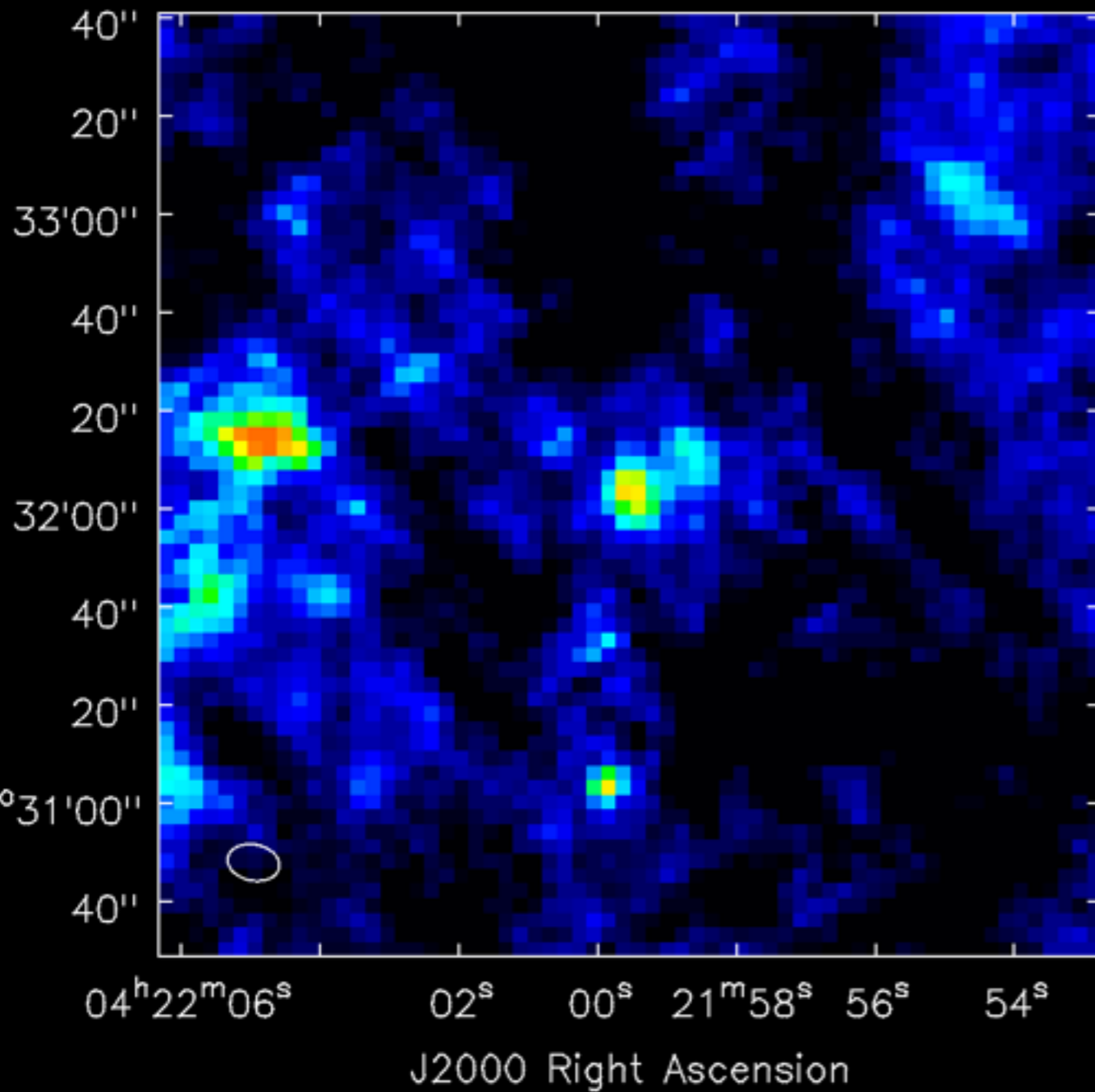
Bernd Fuhrmann (IT)

Michael Pluto (Station hardware)

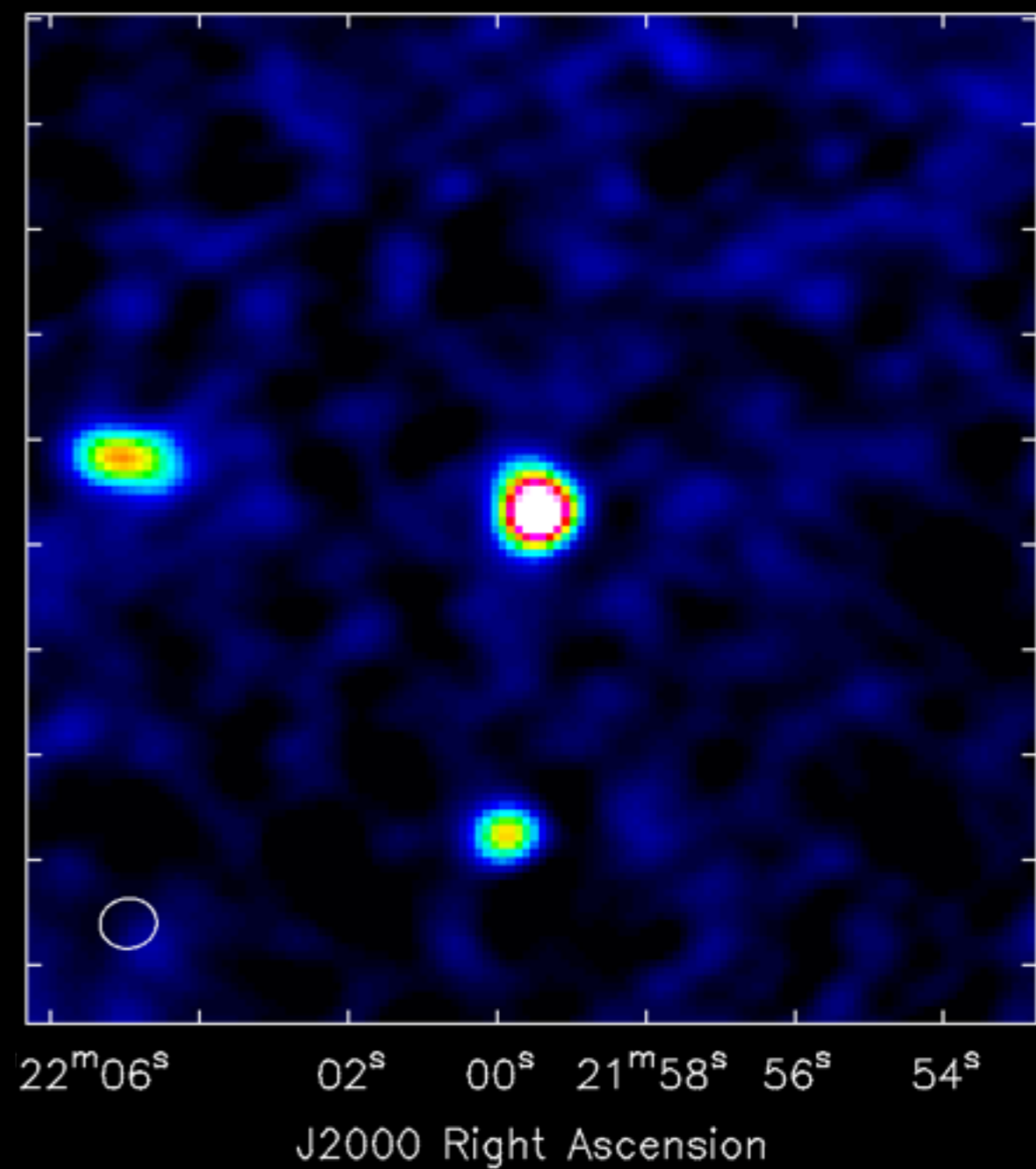
Abell 2069 LOFAR HBA 23"x27" 0.45mJy 370 SB (Drabent)



T Tau with LOFAR @ 150 MHz



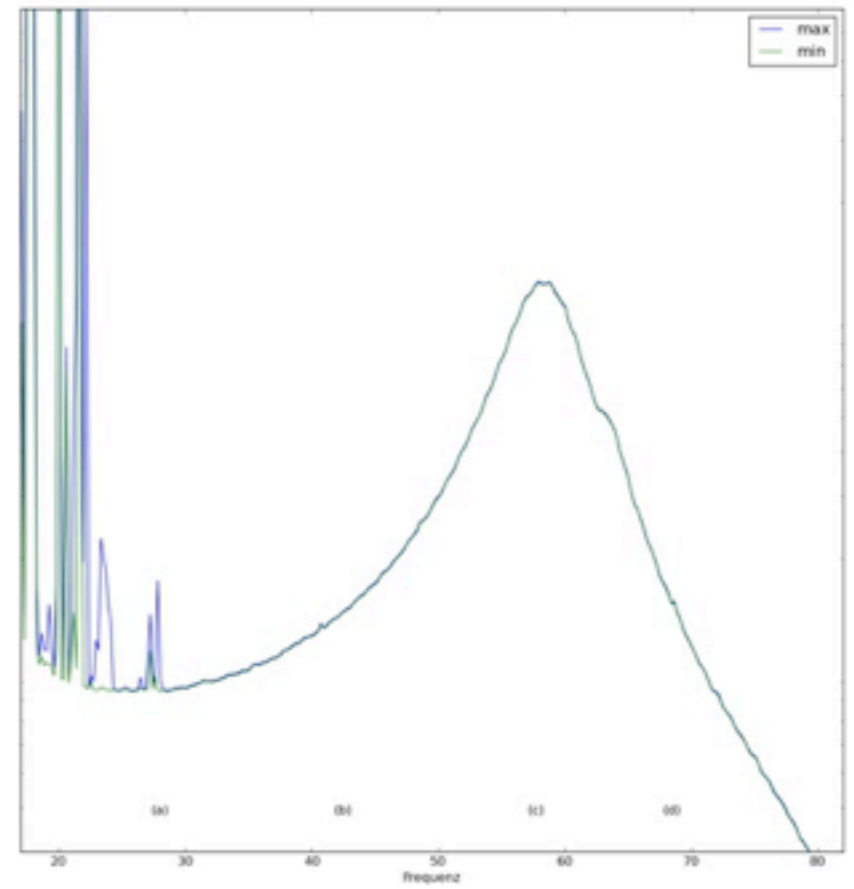
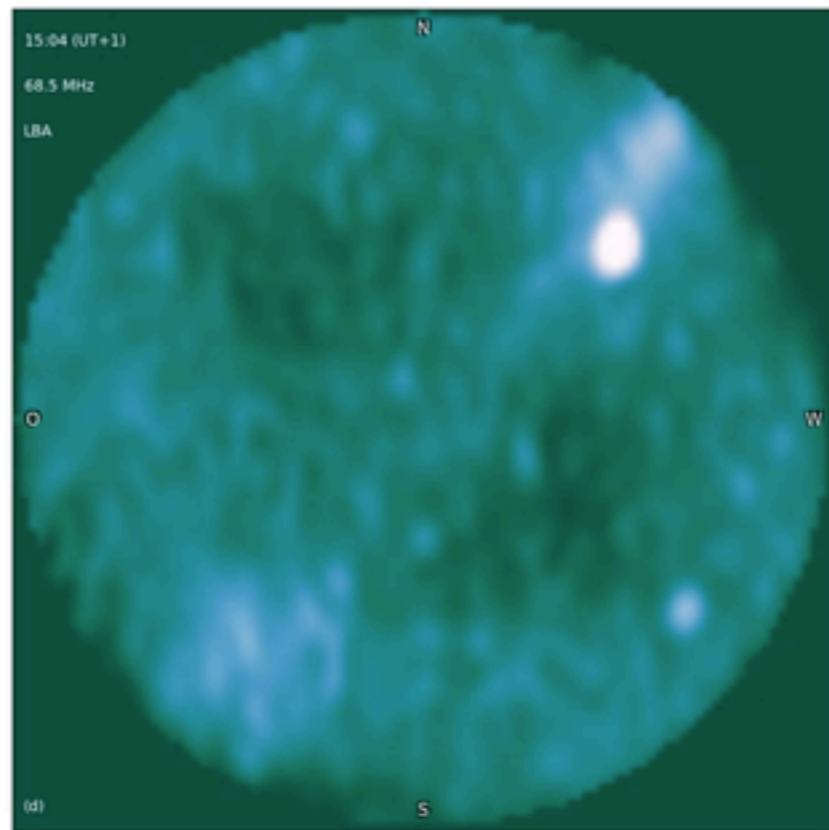
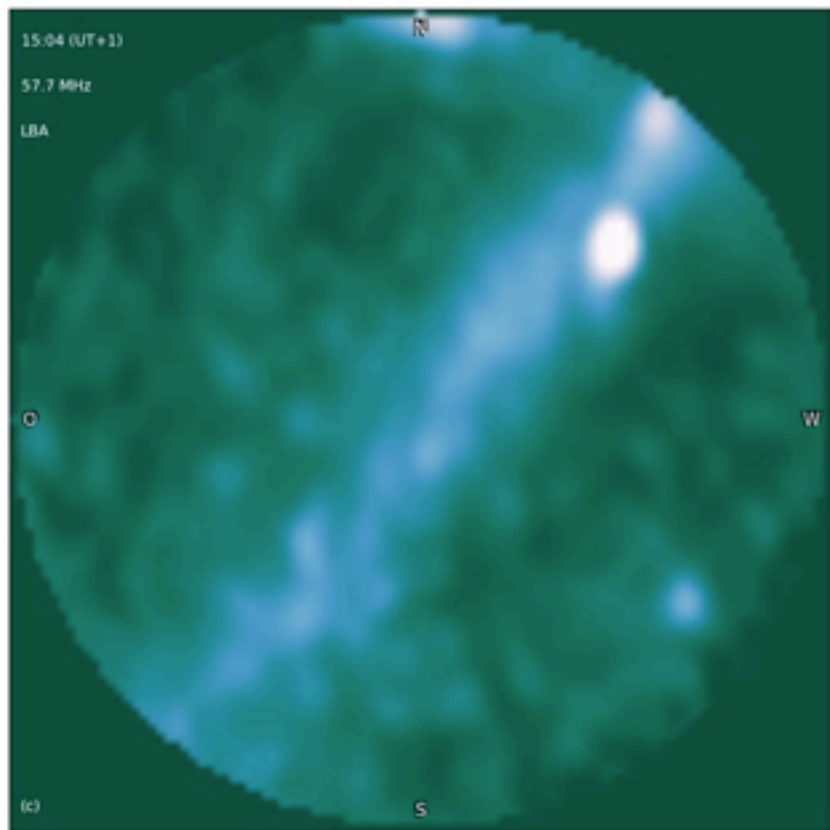
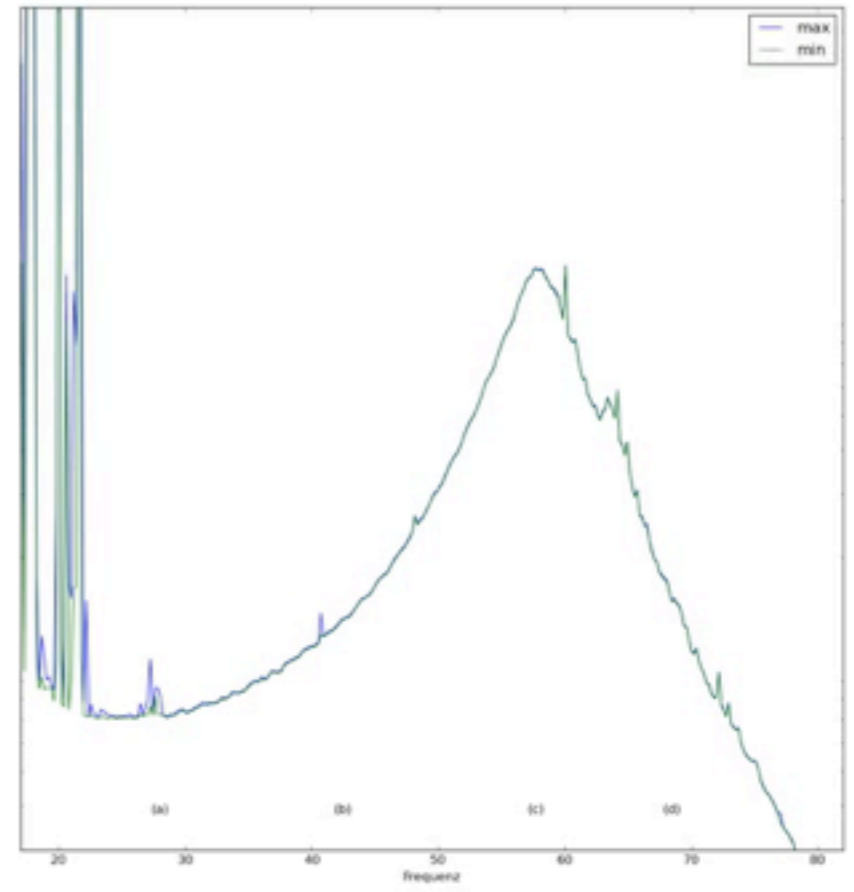
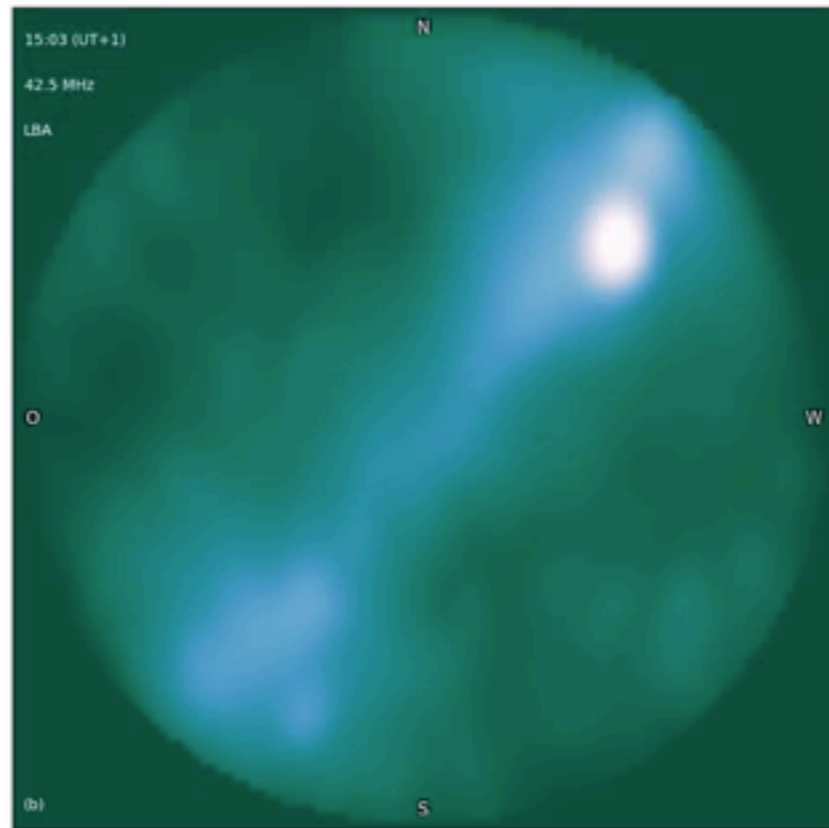
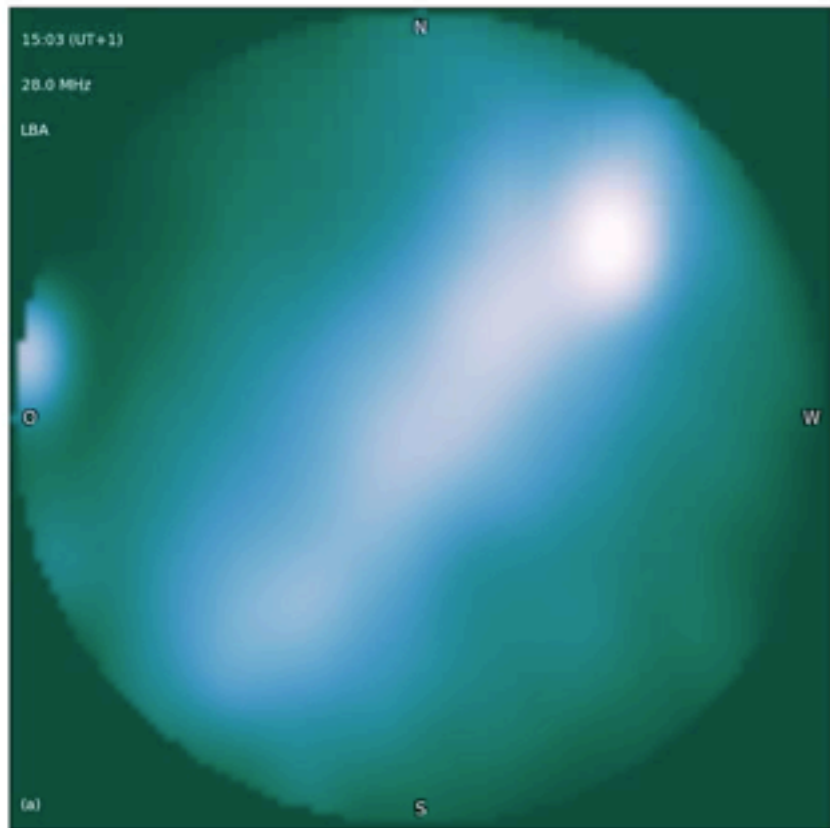
T Tau with GMRT @ 325 MHz



100 SB, no DDE

R. Ainsworth, C. Coughlan, T. Ray (DIAS)

J. Eislöffel, A. Drabent, M. Hoeft (TLS)



Station operation

part of GLOW mode

occasionally single station (open house, etc.)

using iStnMonitor

lofar-ops@tls-tautenburg.de

activities which may cause RFI 'allowed' during day time

LOFAR activities @ TLS

operating LOFAR station (no incidents, part of GLOW mode)

D-LOFAR3 software development (CITT associated)

workstations for LOFAR cal&img

Data reduction on JURECA (preparation)

LOFAR KSPs members:

Surveys (Clusters), MKSP (associated), Solar KSP (associated)

Transients (YSO, Exoplanets)

