



Update  
LOFAR Rollout  
MSSS Meeting, March 19, 2008

# LOFAR ROLLOUT

- Procurement
- Infrastructure
  - Glasfiber – SSOGNO, core, RS, IS
  - Energie
  - Concentrator node
  - Nature development
  - Power
- Astronomical stations –RS, CS, IS
- Geophysics and infrasound stations
  - Core – Annerveen
  - Remote stations
  - 100 x 100 infrasound testfield
- CEP, WAN rollout
- Documentation (CE, DDP, general, maintenance, user manuals, .....

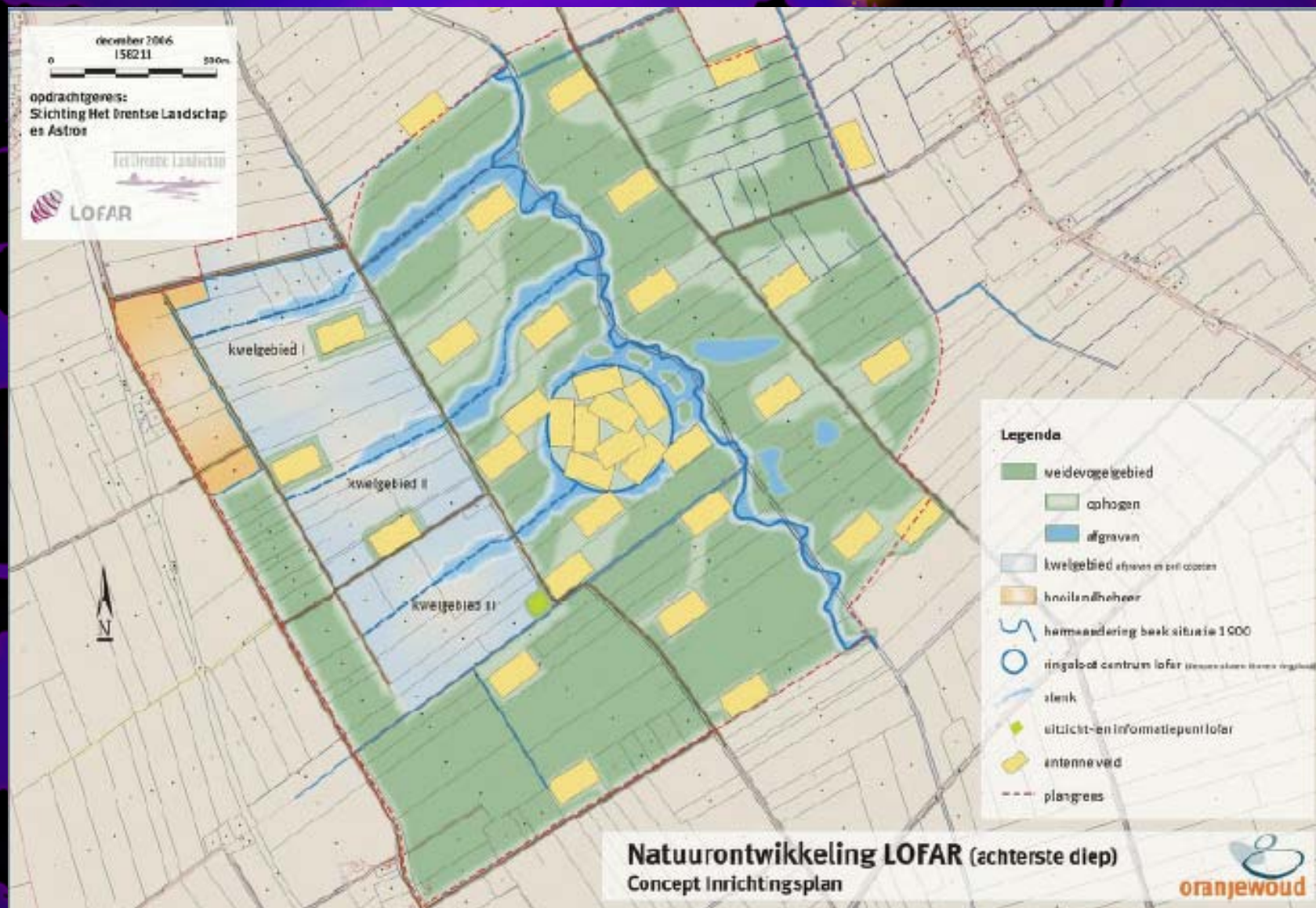
# PROCUREMENT

- Various tenders
  - Printed Circuit Boards
  - Station Hardware
  - Cabinets
  - Wide Area Network
  - Central Computing
  - Nature development
  - Rest of the hardware (e.g. concentrator node, GPS, civil work ...)

# Idea of timelines

- PCB, SHW, CAB tender:
  - 3 Dec 2007 → opening call
  - 22 Jan 2008 → closing
  - This week – contract negotiations
  - First week April: start of the production of PCB's
  - August : hardware available

# Nature development



# Nature development

- Last Friday: proposal deadline
- YES, we do have good possible contractors.
- Planning unknown yet ... depending on contractor

# Planning challenges

- Central core civil activities
  - Nature development
  - Glas, Energy
  - Concentrator node
- Energy and fiber at remote stations
- Procurement
- Weather, birds ...

# Integral planning

- Today - contract negotiations
- April 07 – start production PCB, SHW, CAB
- April 07 – CEP tender, other materials
- April 07 – Start groundwork CC
- May, July – preparations Concentrator Node, Remote stations, datanetwork, energy
- August – Start at the RS fields (cabling, antenna placement)



# Stations ready

- 
- 1.4 Tweederdeweg Nieuw-Buinen 1 October 2008
- 2.5 Valthermond 13 October 2008
- 2.8 Schoonebeek 23 October 2008
- 3.2 Boven op Hondsrug 4 November 2008
- 3.6 Ellertshaar 14 November 2008
- 3.7 Gelpenberg/Zweeloo 26 November 2008
- 5.3 Koedijk - Achterste Diep 8 December 2008

## Core stations

- First one *12 November 2008*
- *Number 13* *7 April 2009*

But .... This in case only 1 Integration and Test team is present. If two: Ready in January 2009

# International stations

A world map with a dark blue background. The continents are shown in a lighter blue. Numerous yellow dots are scattered across the map, representing international stations. These dots are connected by thin, dotted yellow lines, forming a network of connections. The dots are most densely clustered in Europe and North America, with lines extending to other parts of the world like Asia and Australia.

- Parallel to I&T Dutch stations
- Garching
- Tautenburg
- Potsdam
- Nancay
- UK – Jodrell
- Sweden - Onsala