

CS1 Status

CS-08

CS-10

CS-01 CS-16



CS-all

- ◆ 1600 Mbps output (80% of goal)
- ◆ Synchronisation issues between racks notified (workaround: reset of the boards)
- ◆



Experiments

- ◆ Last week pulsar 0329+54 tracked @ 160 MHz
- ◆ Last week (8 Dec.) 16 ustations incl. delay tr.
- ◆ Yesterday pulsar 1919+21 tracked @ 200 MHz for 2 hours after 1 hour an error occurred
- ◆ Yesterday evening 16 ustations incl. delay tr. + station monitoring started

Results Delay Tracking + Fringe Stopping

- ◆ 1 subband stored (60 MHz)
- ◆ Sample frequency: 160 MHz
- ◆ 4 dipoles per ustation
- ◆ 4 ustations
- ◆ Beamtracking: off
- ◆ Delay tracking + fringe stopping: on

CS1dipper Info

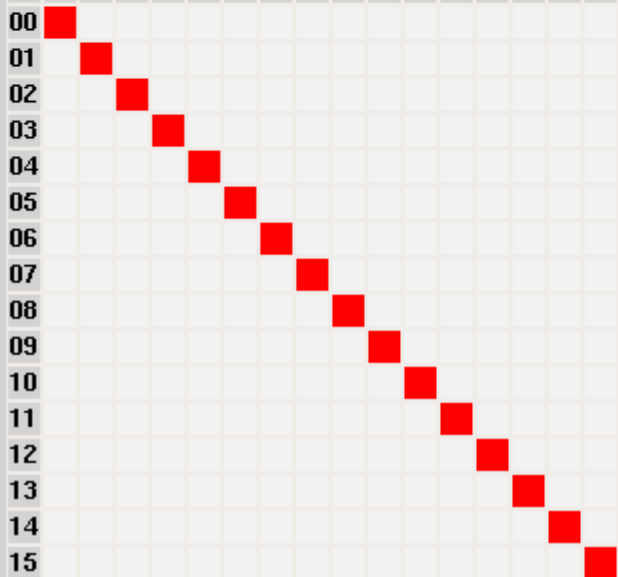
File: /data/L2006_00524.MS
 Time range: from 08-Dec-2006/14:29:00.884 to 08-Dec-2006/19:25:51.996
 Integration time: 59.7688 sec
 Number of integrations: 200

LOFAR-CS1 Data Dipper

CS1 Baseline selector

all standard clear only auto no auto

00 01 02 03 04 05 06 07 08 09 10 11 12 13 14 15 16 17 18 19 20 21 22 23 24 25 26 27 28 29 30 31



Pols
 XX
 XY
 YX
 YY

SBs

Chans

Sources

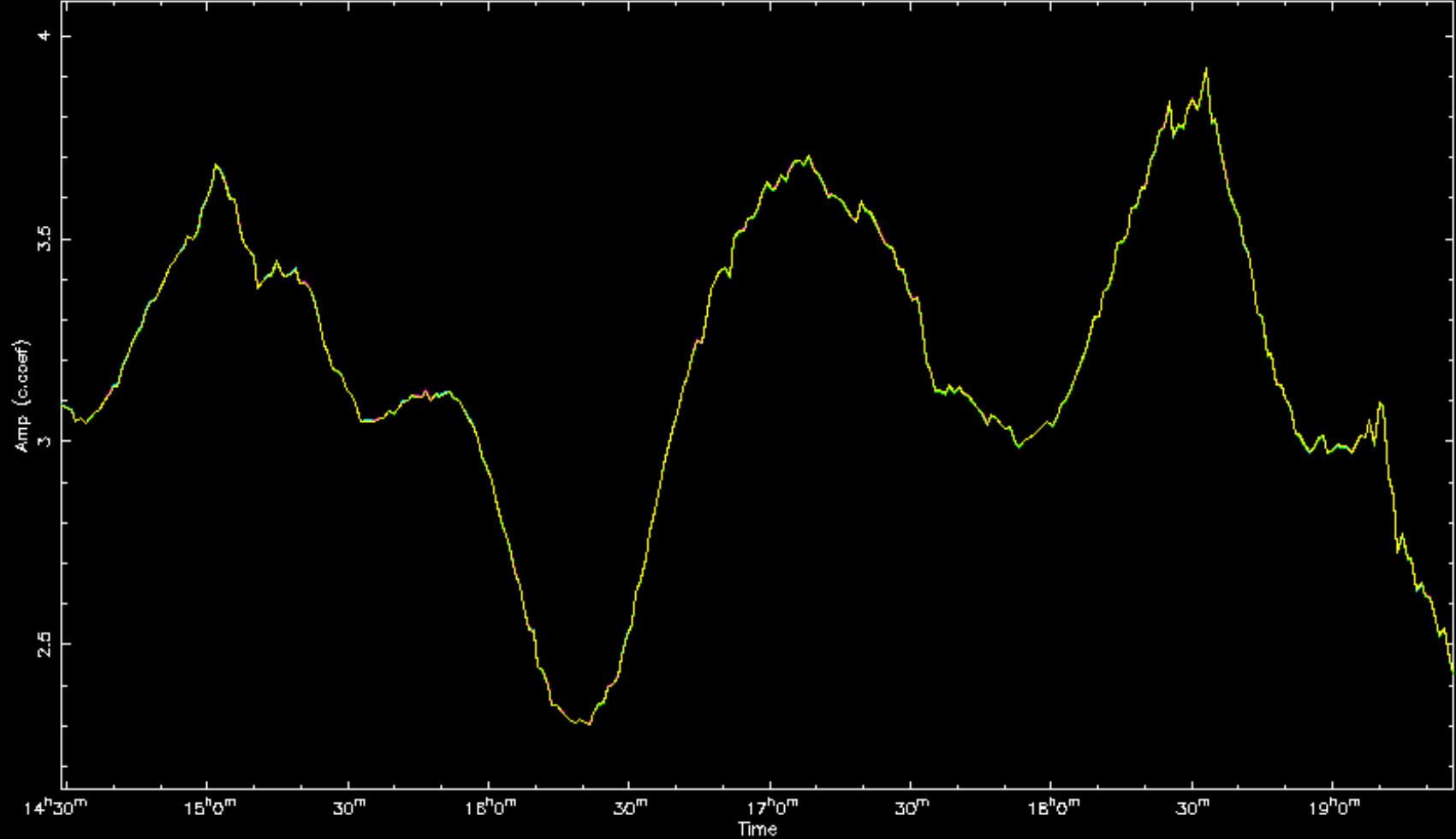
Times
 08-Dec-2006/14:29:00.884
 08-Dec-2006/14:30:00.653
 08-Dec-2006/14:31:00.422
 08-Dec-2006/14:32:00.191
 08-Dec-2006/14:32:59.960
 08-Dec-2006/14:33:59.729
 08-Dec-2006/14:34:59.497

55
 56
 57
 58
 59
 60
 61
 62
 63
 64
 65
 66
 67
 68
 69
 70
 71
 72
 73
 74
 75
 76
 77
 78
 79
 80
 81
 82
 83
 84
 85
 86
 87
 88

CS1dipper plots

Vector averaged channels: 1:256

Amplitude vs. time for SRC=BEAM_D



- P=XY,BL=04-05
- P=XY,BL=04-06
- P=XY,BL=04-07
- P=XY,BL=05-06
- P=XY,BL=05-07
- P=XY,BL=06-07

27	
28	
29	

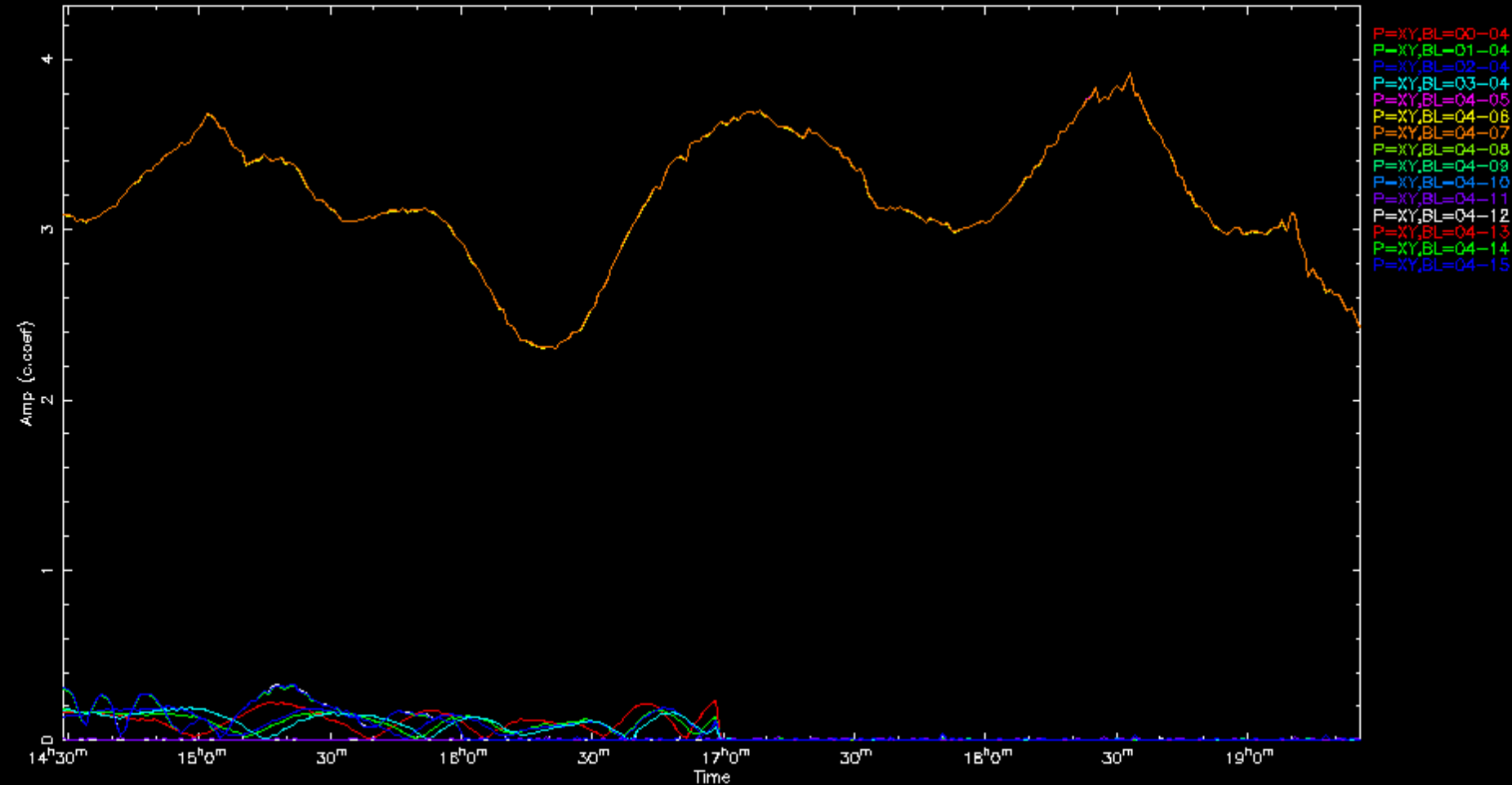
08-Dec-2006/14:37:58.804

all

CS1dipper plots

Vector averaged channels: 1:256

Amplitude vs. time for SRC=BEAM_0



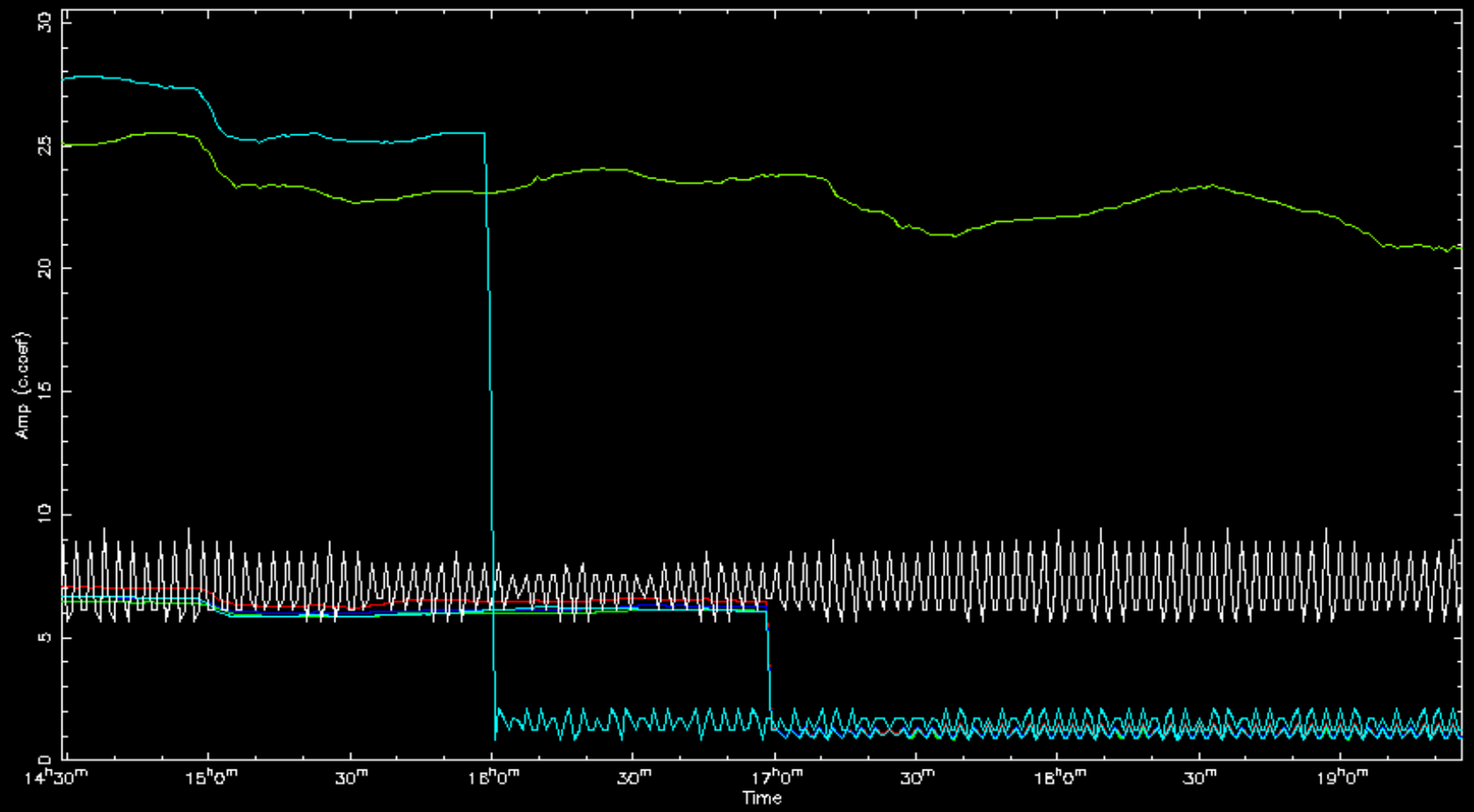
Polarization selection: [XY]
Readonly measurement set: just detaching from file.
Getting data from disk...
averaged 256 channels

CS1dipper plots

Click in window for accurate position!!

Vector averaged channels: 1:256

Amplitude vs. time for SRC=BEAM_0



- P=XX,BL=00-00
- P=XX,BL=01-01
- P=XX,BL=02-02
- P=XX,BL=03-03
- P=XX,BL=04-04
- P=XX,BL=05-05
- P=XX,BL=06-06
- P=XX,BL=07-07
- P=XX,BL=08-08
- P=XX,BL=09-09
- P=XX,BL=10-10
- P=XX,BL=11-11
- P=XX,BL=12-12
- P=XX,BL=13-13
- P=XX,BL=14-14
- P=XX,BL=15-15

AL: Selection
 27 AL: Channel s
 28 AL: Polarizat
 29 AL: Readonly
 30 shed getting
 31 or averaged

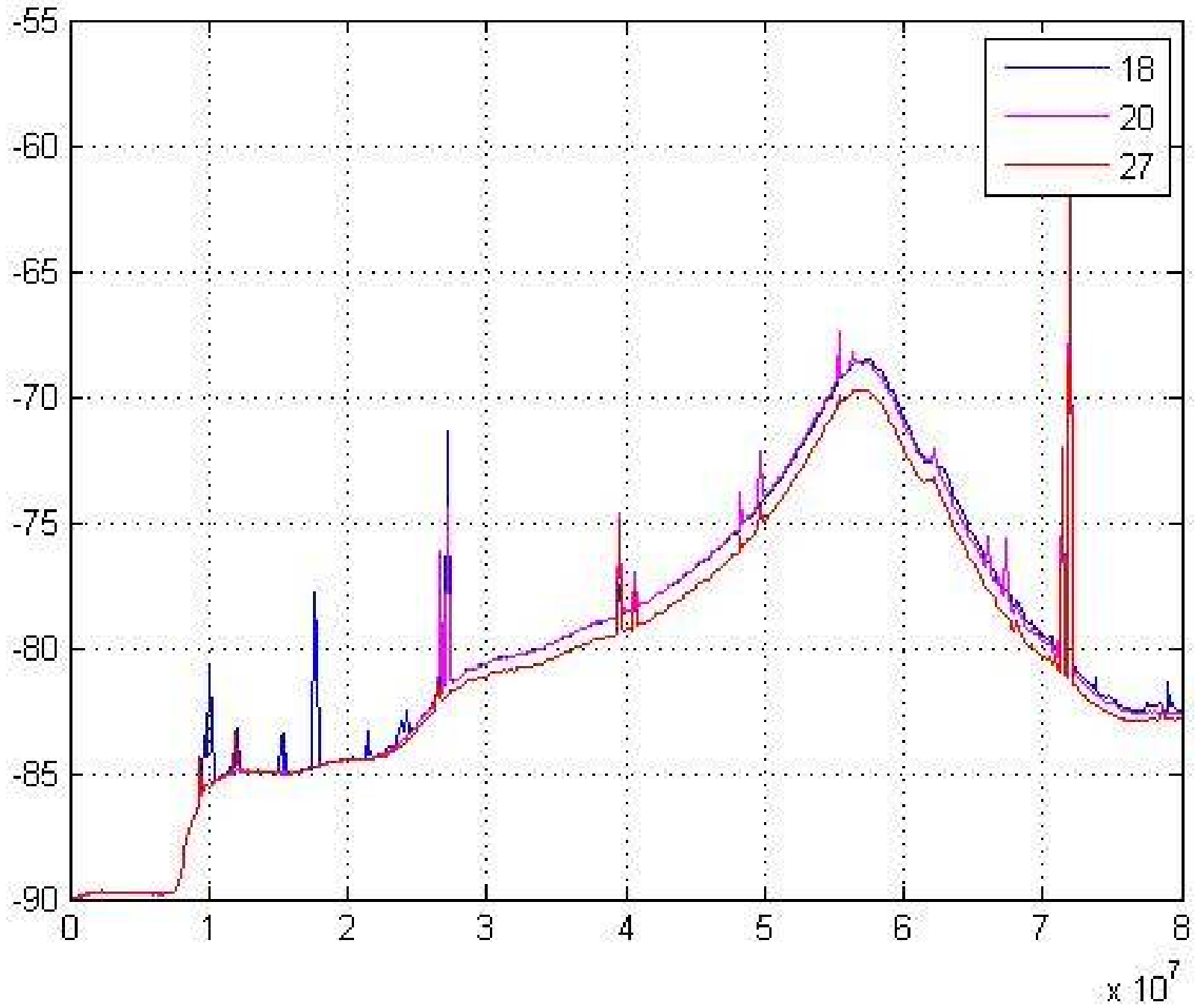
08-Dec-2006/14:37:58.804

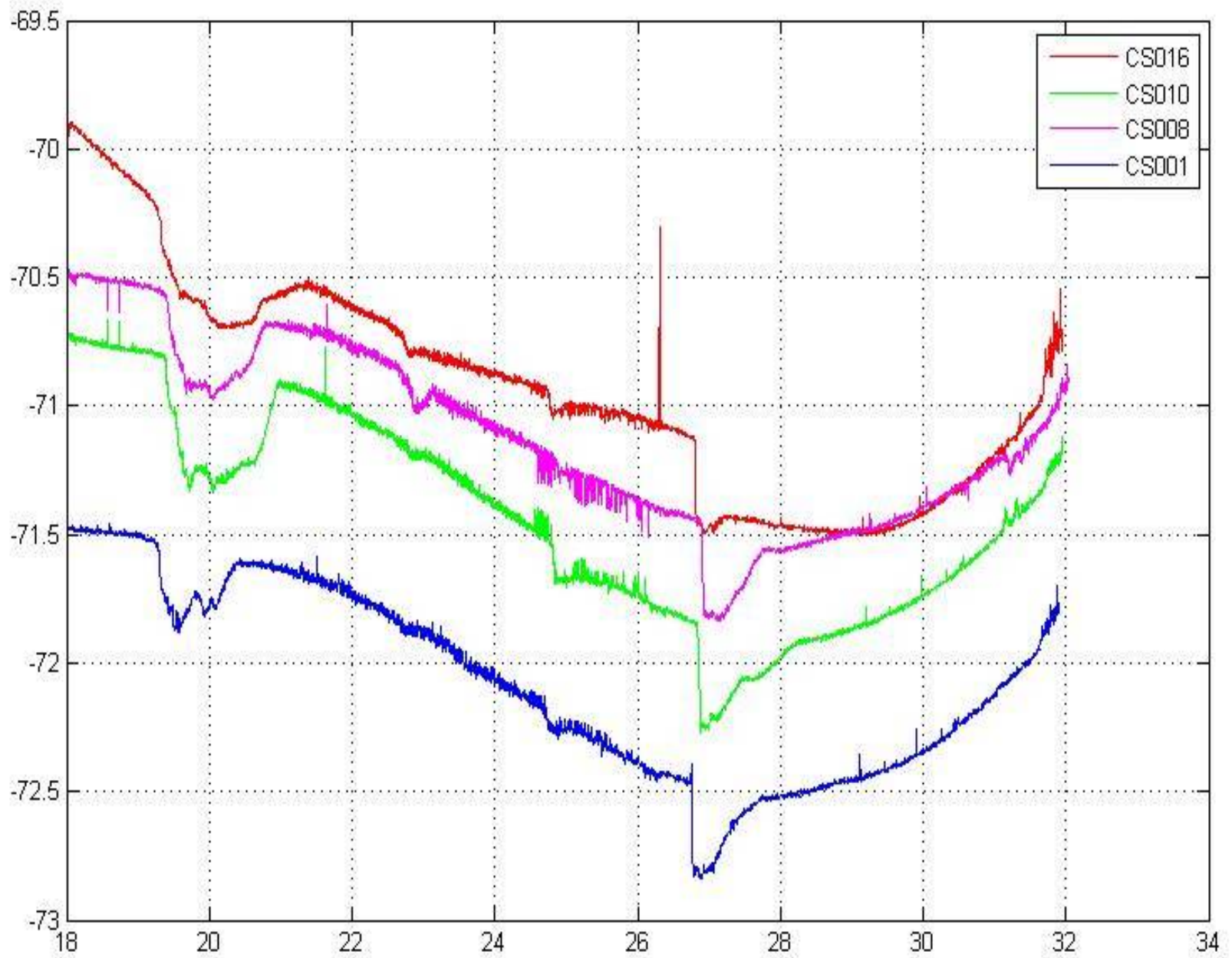
all

Second delay tracking + fringe stopping exp.

- ◆ Failed because time server @ central systems was not on time for 1 input node was drifted away
- ◆ Subband statistics of all dipoles were measured

CS001





Main start screen

PVSS-II: LOFAR Navigator

Personal Show DPE

ASTRON

List Panel Trend Alert Archive Plot Bar Control Log Config

View Config LOFAR Main

LOFAR - CS1

CS001 CS010 CS016 CS008

Observation	Status	Error
Observation13	Activating	

Offline	Status	Error

0/0

root

12:34:49 PM 12/13/2006

RAM 97%

HDD 78%



Controllers overview

PVSS-II: LOFAR Navigator

Personal Show DPE

ASTRON

List Panel Trend Alert Archive Plot Bar Control Log Config

View Config Ctrl Overview

ObsCtrl

time	level	source	message
13-12-06 11:27:00.925	INFO	MAC.GCF.PAL.SAL	Set value of property 'MCU001:LOFAR'

State : Activating
Error :

Observation: Observation13

Station: CS001

Controller	Status	Error
StationCtrl		
DigBoardCtrl		
BeamCtrl		
CalCtrl		

Logging from: StationCtrl

time	level	source	m

Station: CS008

Controller	Status	Error
StationCtrl		
DigBoardCtrl		
BeamCtrl		
CalCtrl		

Logging from: StationCtrl

time	level	source	m

Station: CS010

Controller	Status	Error
StationCtrl	active	
DigBoardCtrl	subscribe on clock	
BeamCtrl	Preparing	
CalCtrl	Prepared	

Logging from: StationCtrl

time	level	source	m

Station: CS016

Controller	Status	Error
StationCtrl		
DigBoardCtrl		
BeamCtrl		
CalCtrl		

Logging from: StationCtrl

time	level	source	m

0/0

root

12:32:56 PM 12/13/2006

RAM 87%
HDD 78%



HBA

- ◆ January 2007: 2 proto HBA tiles to Westerbork
 - ⊕ first for engineering tests

