

# Technical Status "CS1"

CS008

CS010

CS001 CS016

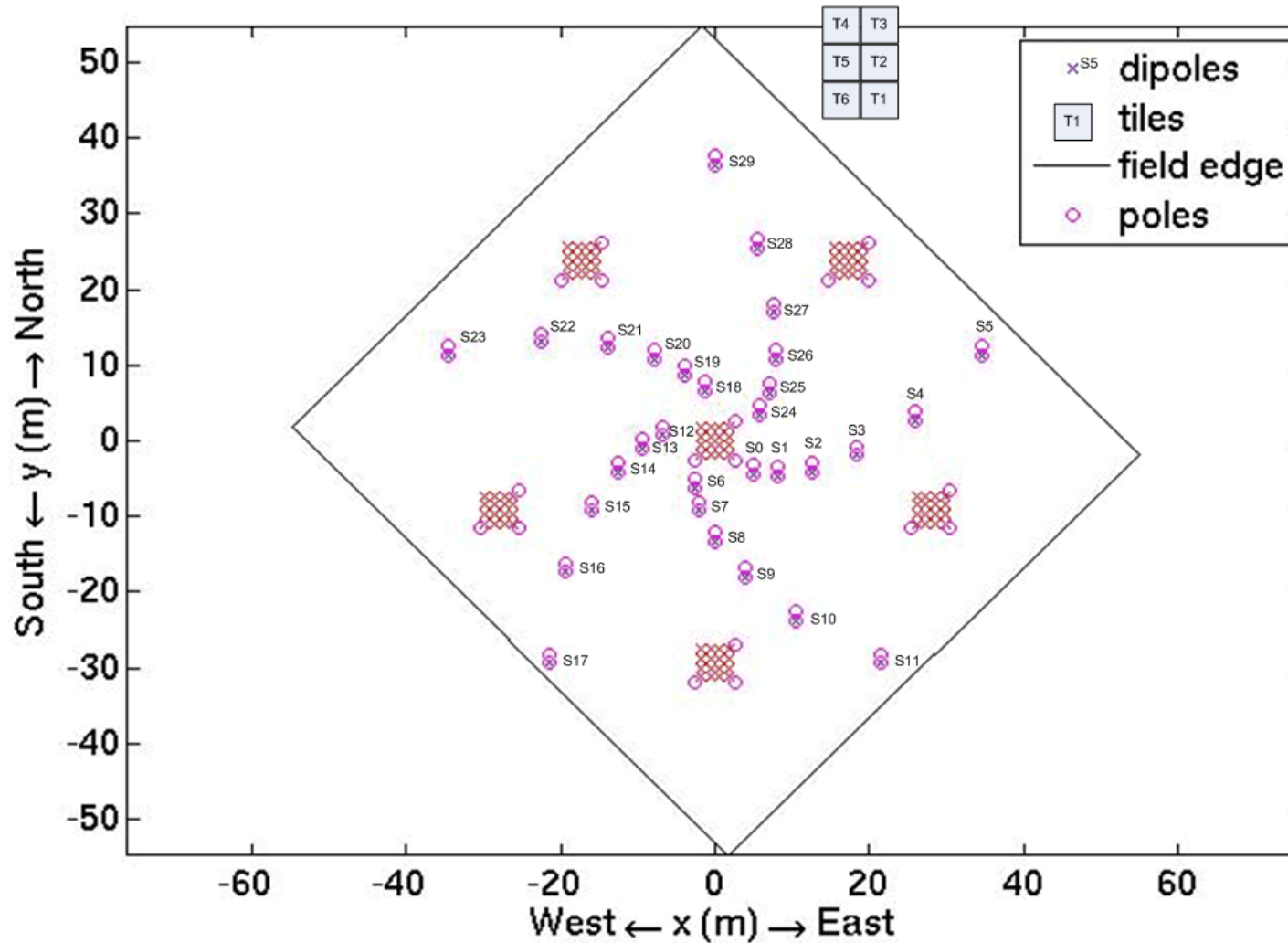


# HBA status

---

- ◆ 24 Single dipoles are placed (S6..S29)
  - ⊕ 6 dipoles (S0 ...S5) next week
  - ⊕ Frontends need to be tested and assembled (WSRT)
  - ⊕ Later repair of the poor single dipoles (switches)
- ◆ All 6 tiles are working
  - ⊕ Only 3 modems are placed
  - ⊕ Rest is waiting for some components

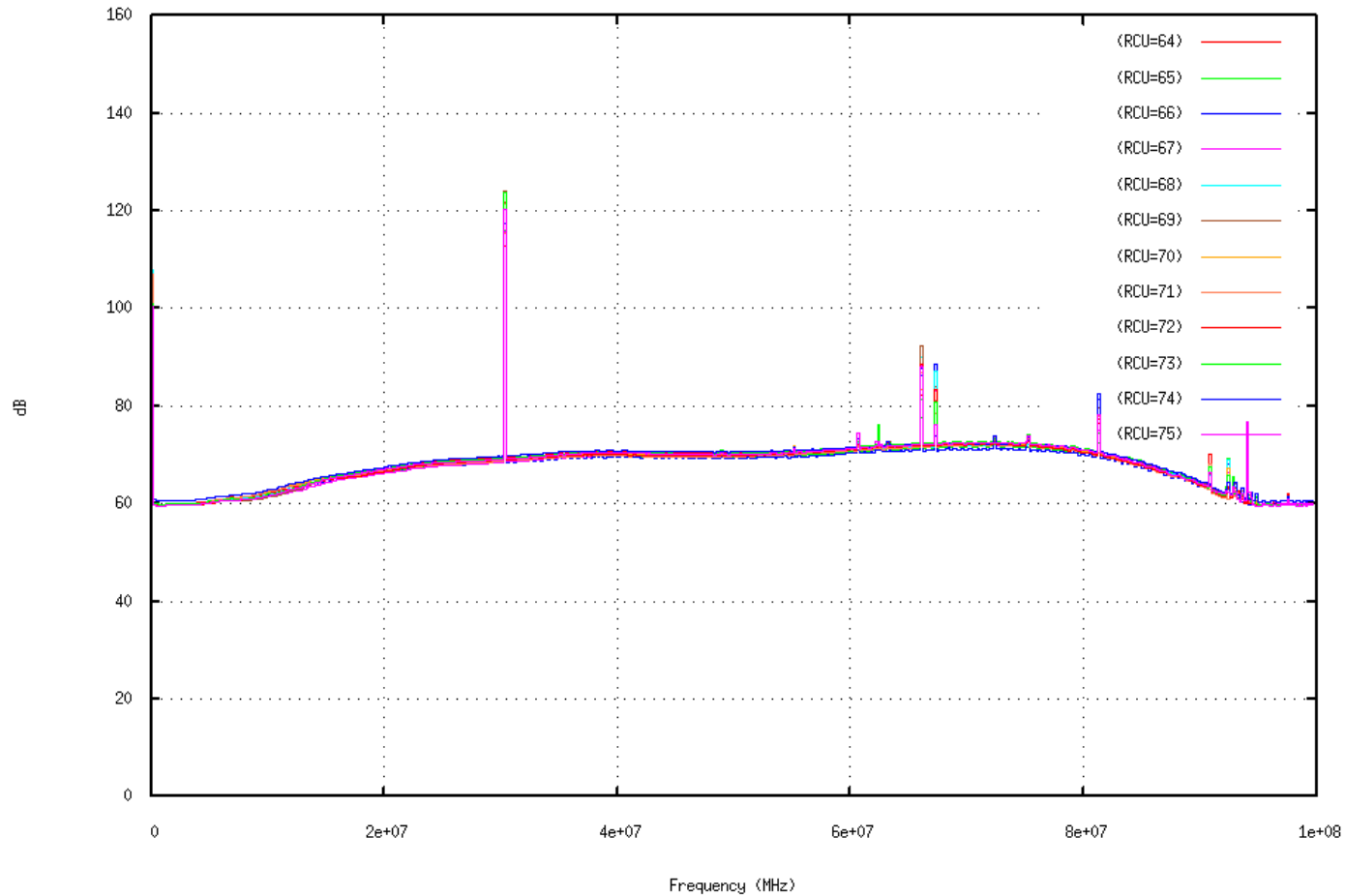
# HBA status



S

# HBA status

1180594747 - Thu, 31 May 2007 06:59:07 +0000



1.55863e+07, 148.301



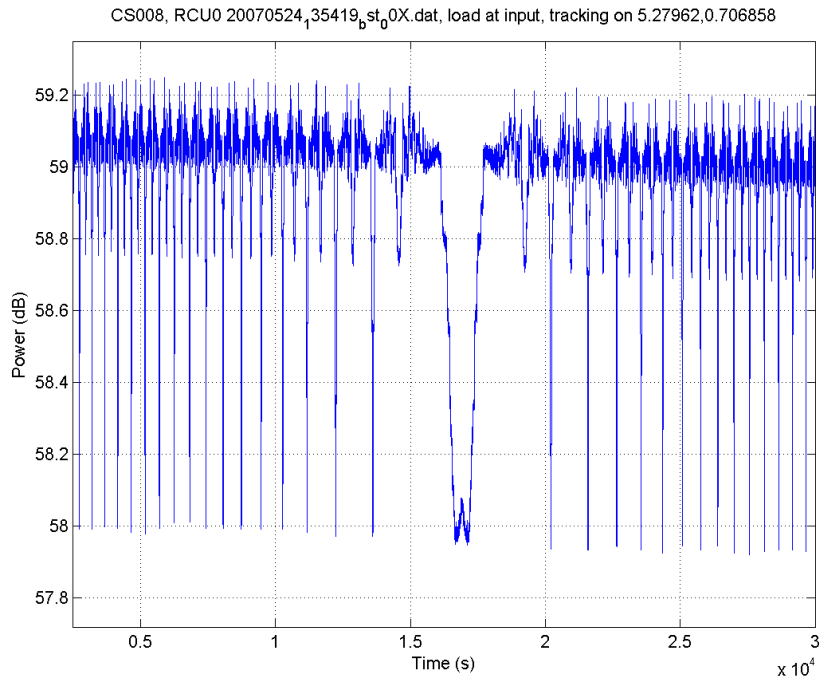
# RSP III status

---

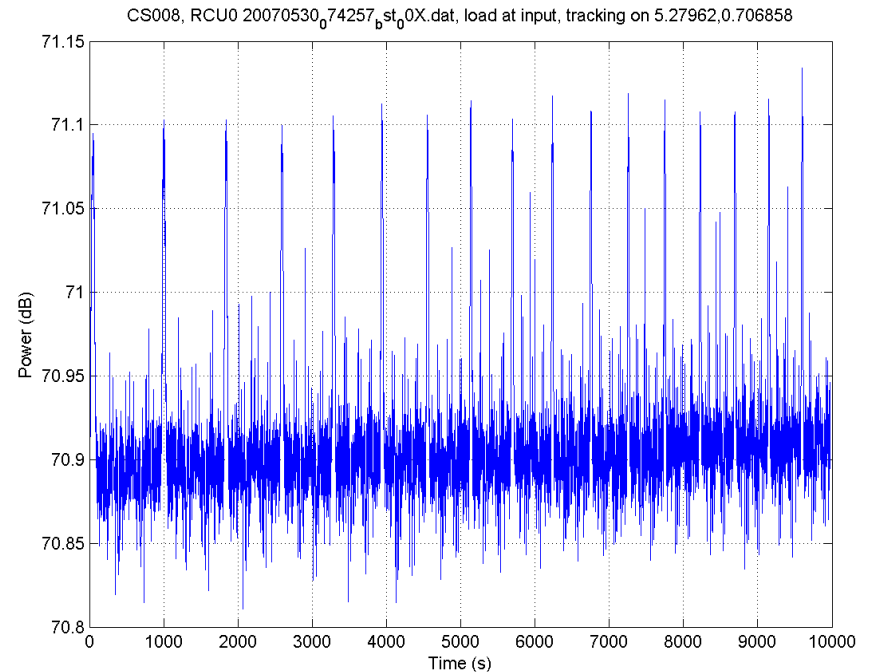
- ◆ 36 RSP III boards in assembly
  - ⊕ First prototype boards are tested and ok (Gijs)
  - ⊕ Upgrade of one station (CS-001c) with 4 \* RSP III
  - ⊕ RSP II boards used in CS-001t (Dwingeloo testsystem)

# Crosscorr dips test (75 ohm load LBL, RCU0)

Subband 288 BFGain=8000



Subband 288 BFGain=32000



- ⊕ BFGain factor 4 higher = 12 dB ( $20 \log 4$ )
- ⊕ Dip/peaks from 1 dB to 0.2 dB
- ⊕ Dip/peaks are beamformer phase dependent

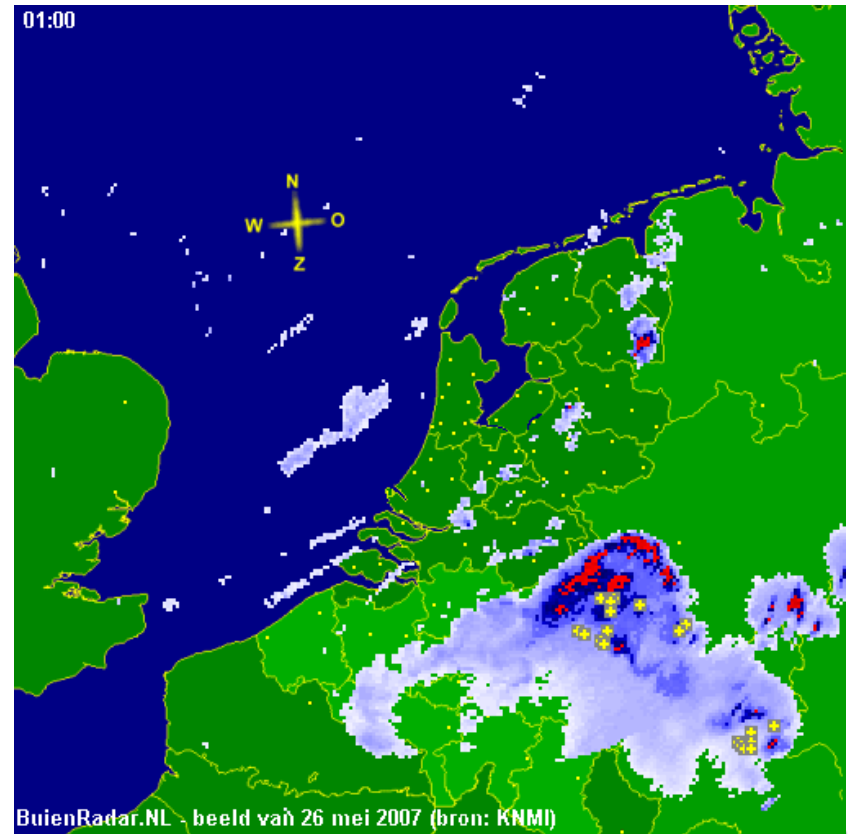
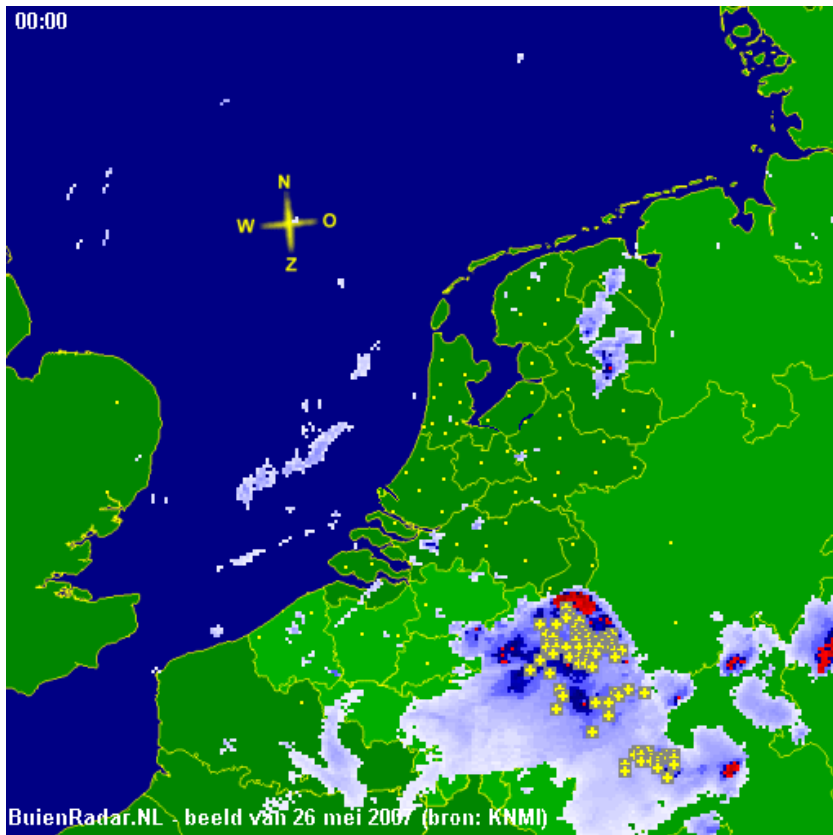
# Antenna 8 (RCU 24,25) on CS001c

- plastic sleeves around dipole wires & tension cord [new]



# Rain results

- 26 May 2007 00:00 very light rainfall (0-10mm/hour)
- 26 May 2007 01:00 heavy rainfall (10-100mm/hour)

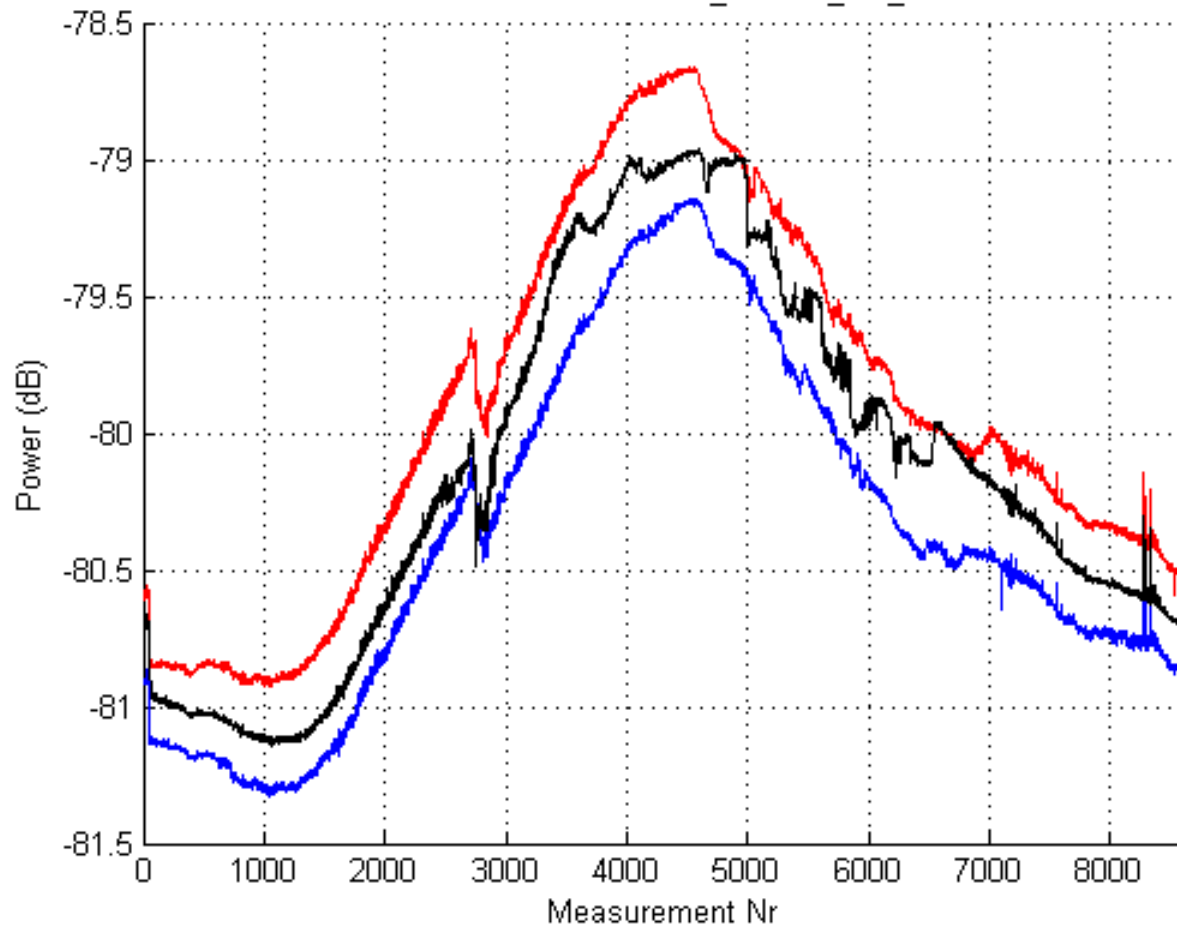




# Rain results (24 hours measurement)

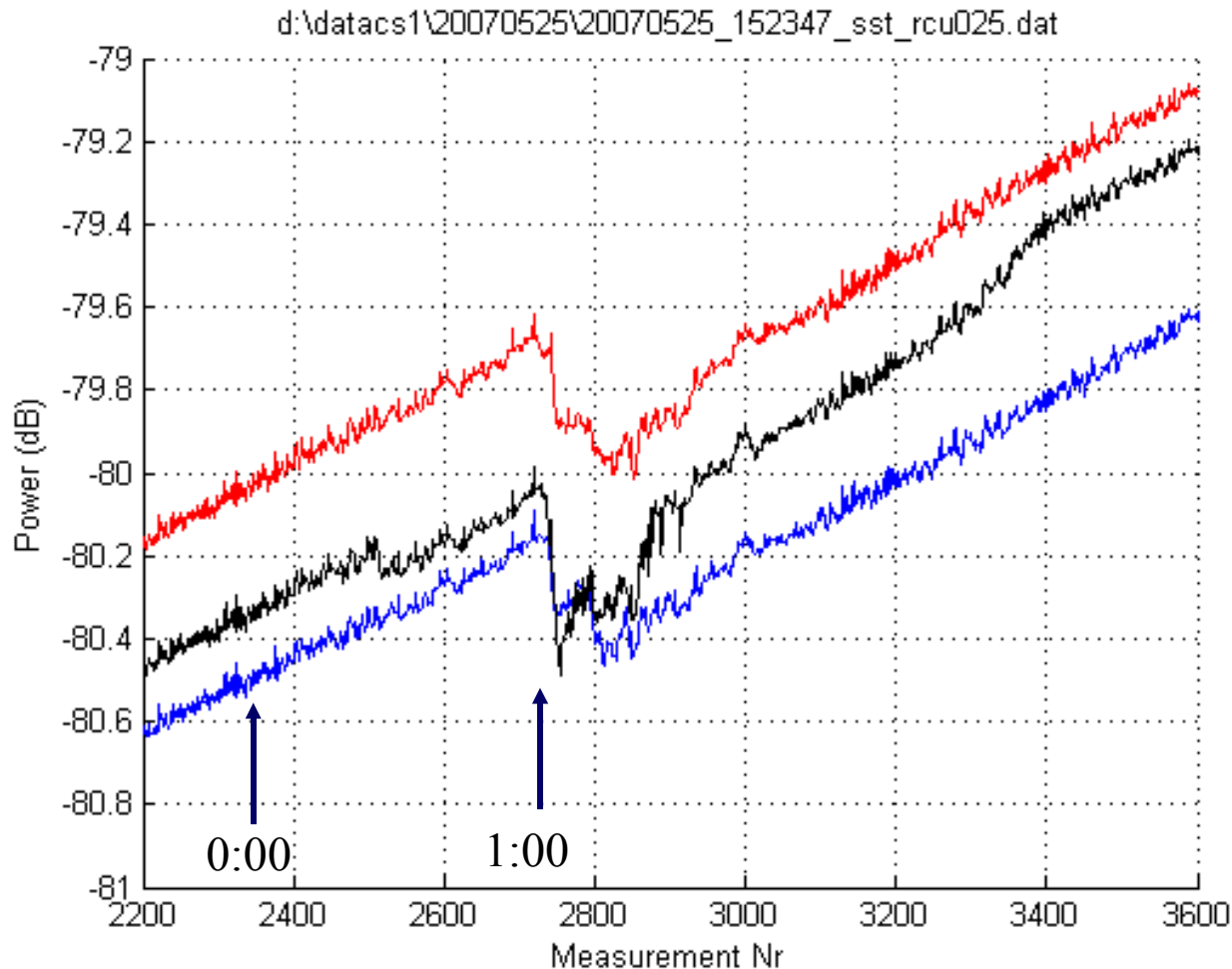
- black: original LBA
- blue: plastic sleeves around dipole wires & tension cord [new]
- red: plastic sleeves around tension cord (gain compensation)

d:\datacs1\20070525\20070525\_152347\_sst\_rcu025.dat



# Rain results (24 hours measurement)

- black: original LBA
- blue: plastic sleeves around dipole wires & tension cord [new]
- red: plastic sleeves around tension cord



# Rain results

- blue: plastic sleeves around dipole wires & tension cord [new]
- red: plastic sleeves around tension cord (gain compensation -0.5dB)

