

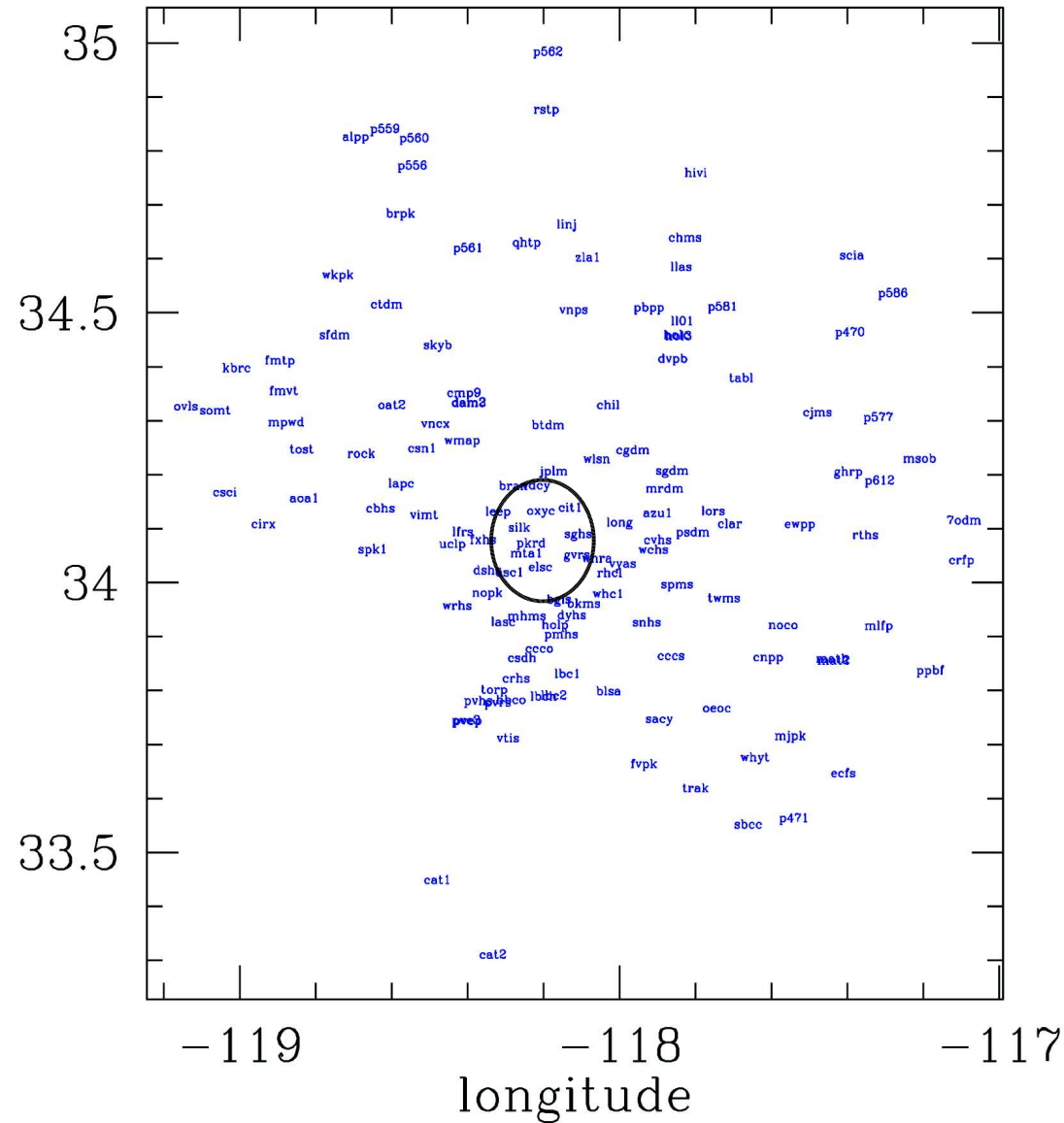
GPS data of 122 stations, 32 satellites

selected group of 14 nearby stations, 1 satellite

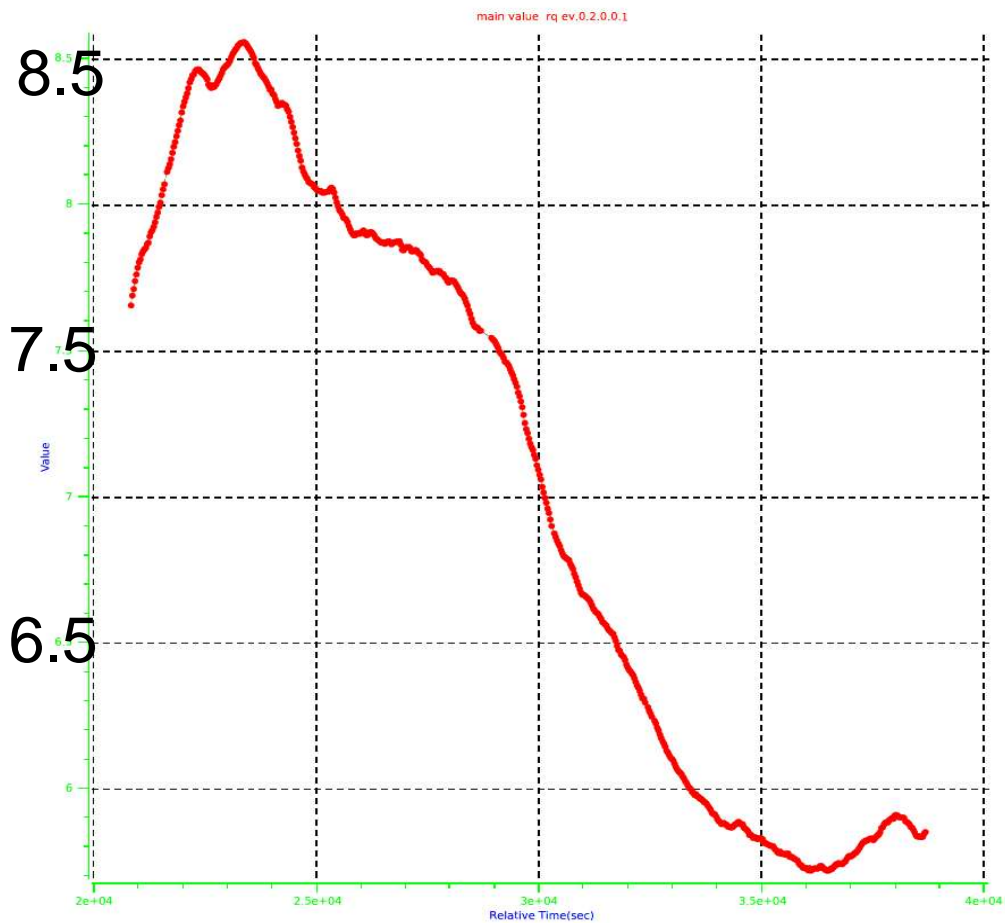
subtract average TEC-value:

- remove large scale ionospheric effects
- remove remaining bias errors

Max. distance between piercing points: ~ 30 km

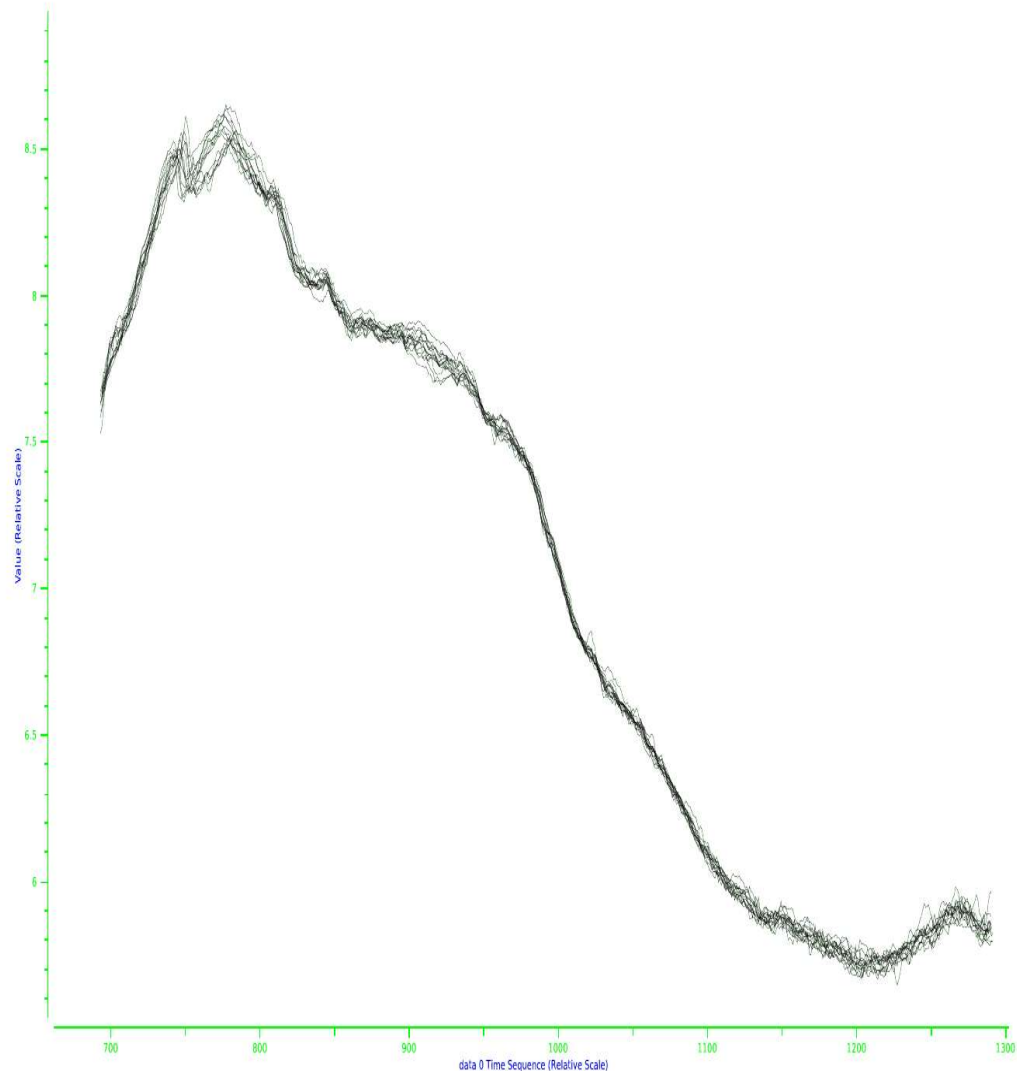


Average TEC 14 stations (bias+cos α corrected)

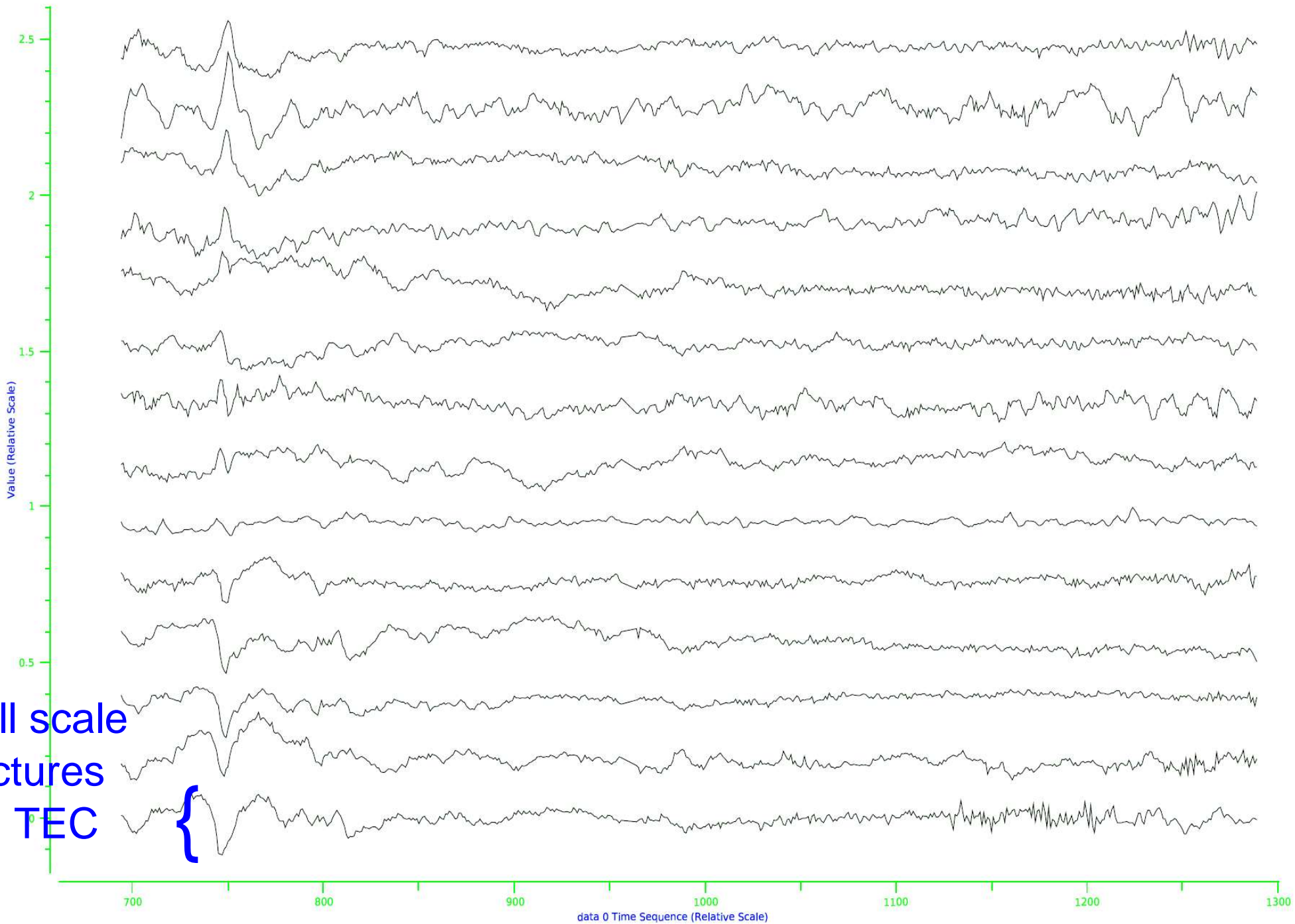


Time (s) ~ 5hr

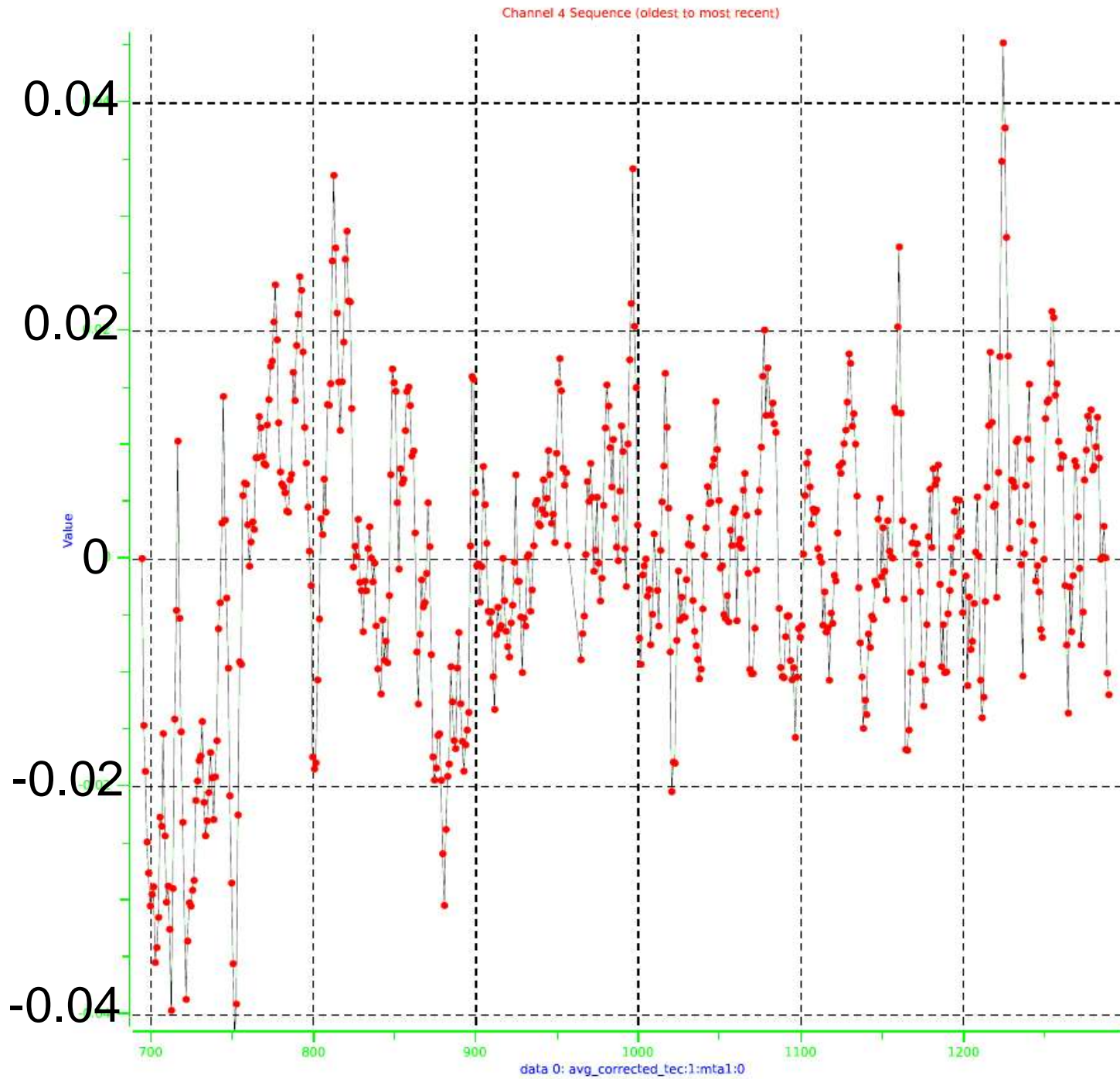
all stations



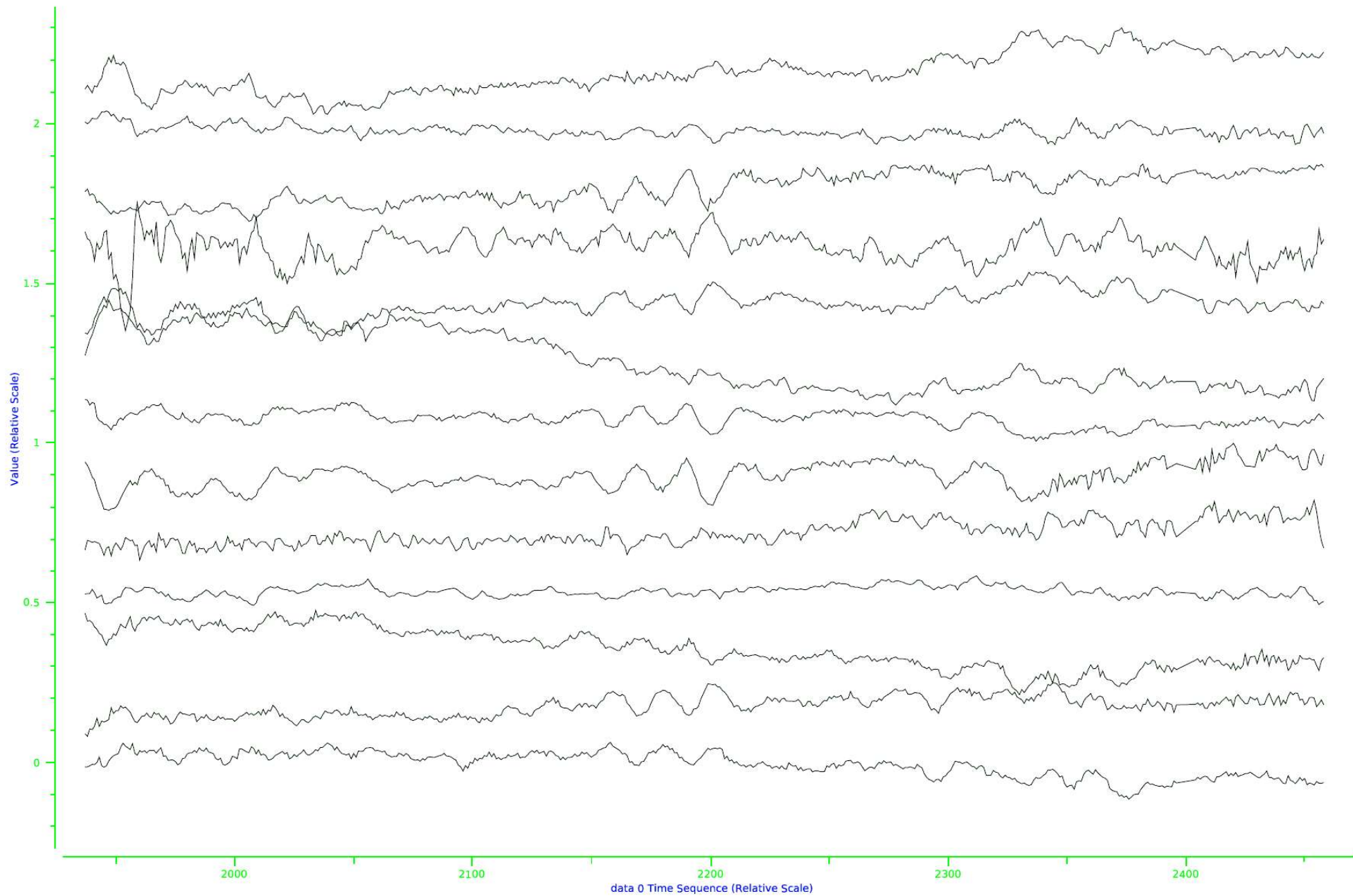
N-S order



time: ~5 hrs nighttime



time: last 4 hrs



time: ~5 hrs daytime