

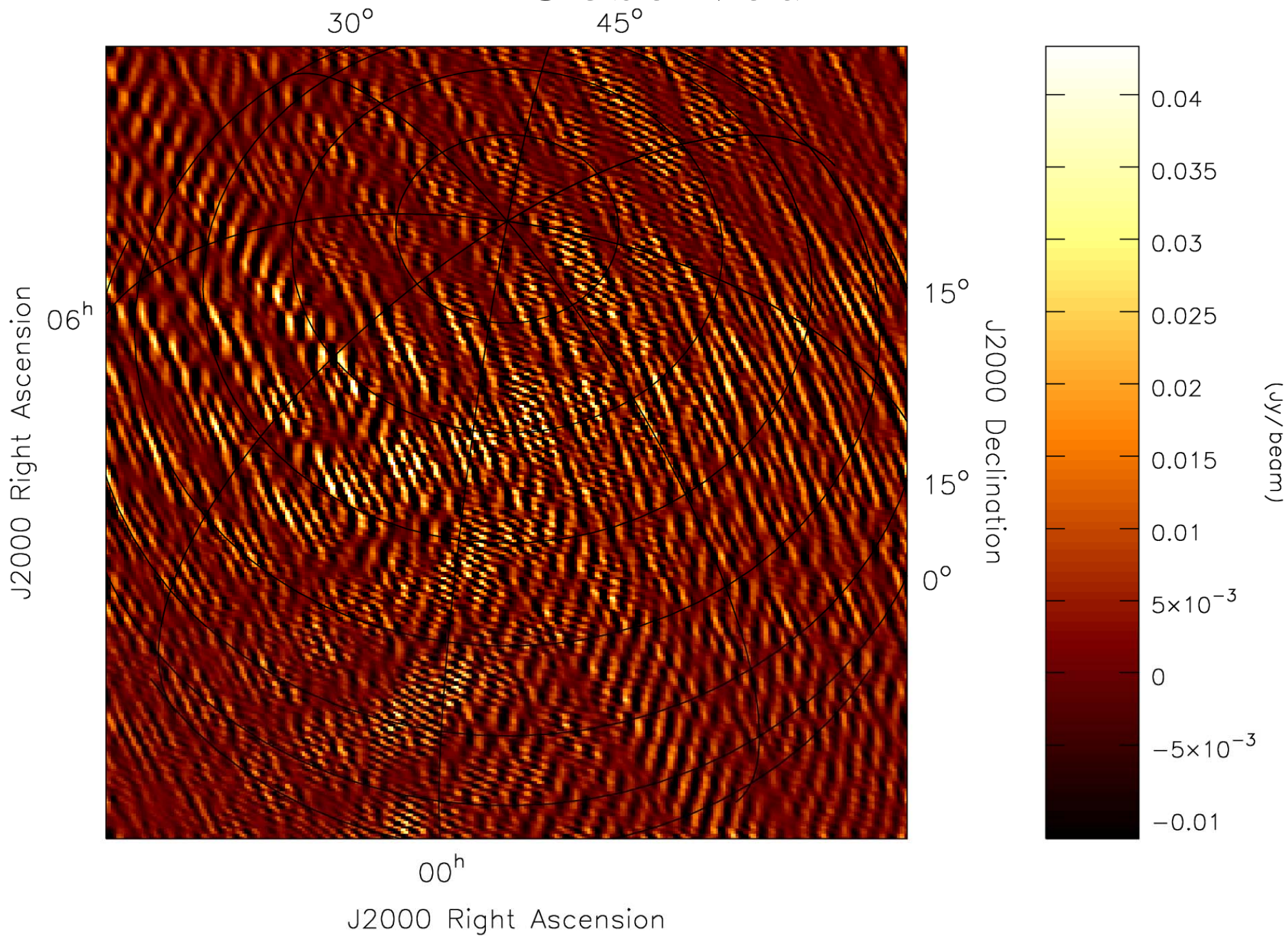
BBS Results on CS1 data

- L2007_1429
 - 14 Feb 2007, 14 (11.5?) hour observation
 - Beamforming + DPT on CasA
 - CS10 (1x48, 1x24, 1x12, 1x6), others 4x4
 - Some incorrect UVW coordinates which affect imaging
- Processed the first hour of data from subband 4 (57.187 Mhz)

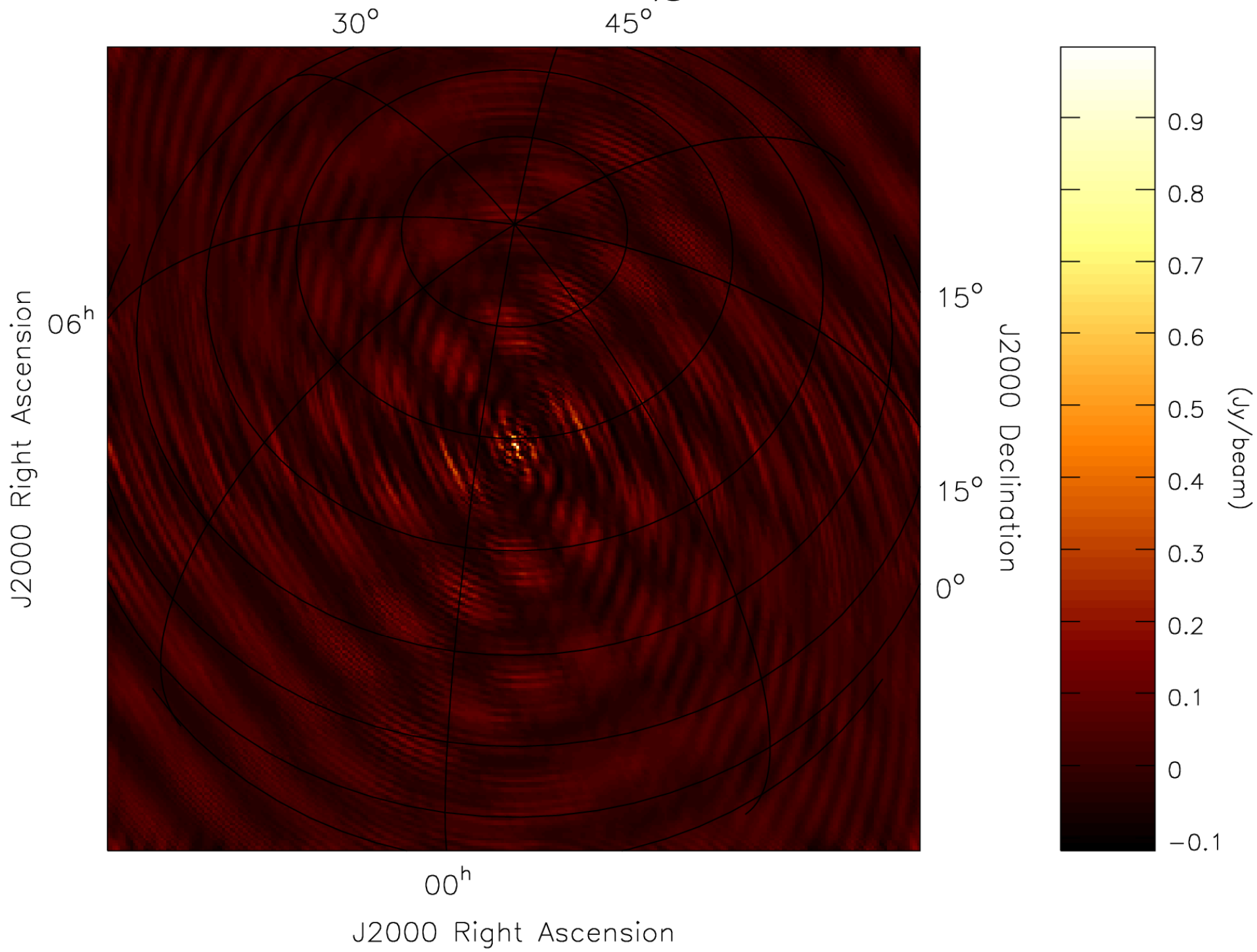
Processing

- Two source model
 - CasA (1.0 Jy), CygA (0.1 Jy)
- Simultaneous solution for complex station gain (G-jones) in the direction of CasA, CygA
 - Solution for g_{11} , g_{22} ($g_{12} = g_{21} = 0$)
 - For each of the 60 timeslots, constant over all 256 frequency channels
- Correct for the phase center (CasA)

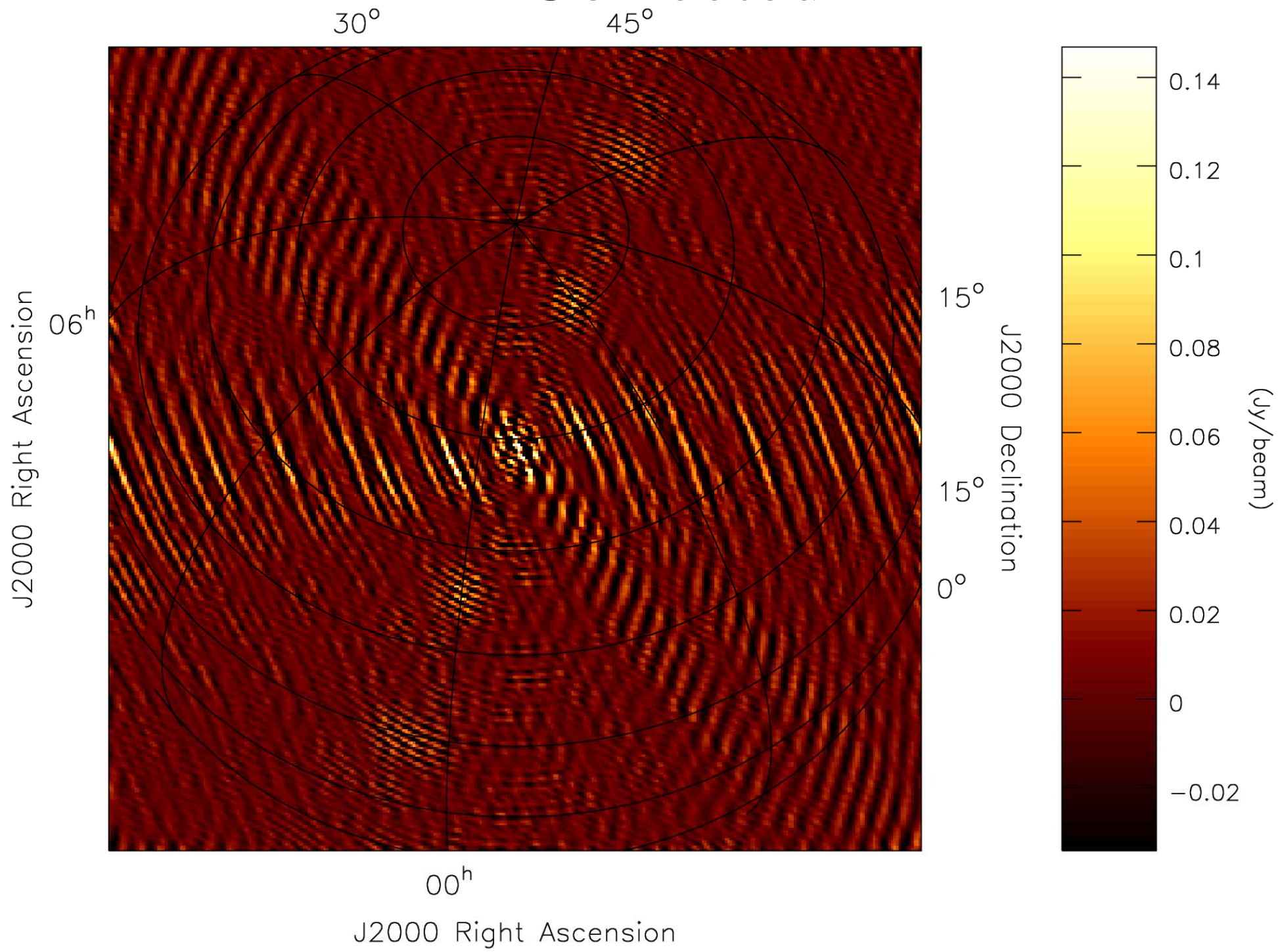
Observed



PSF



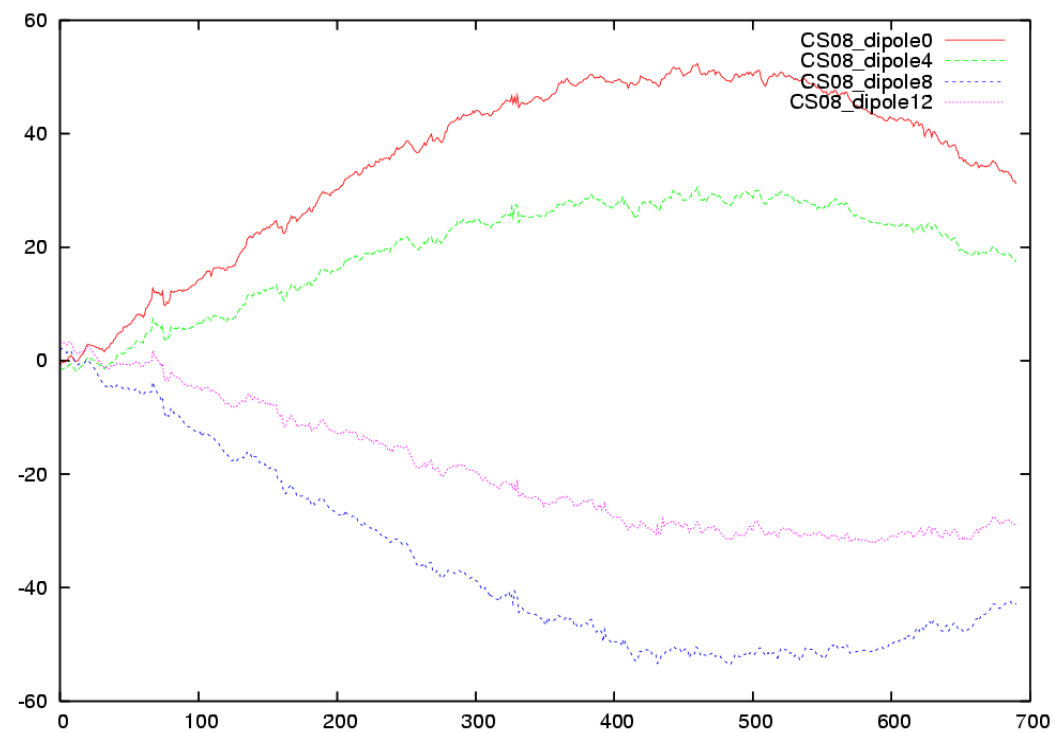
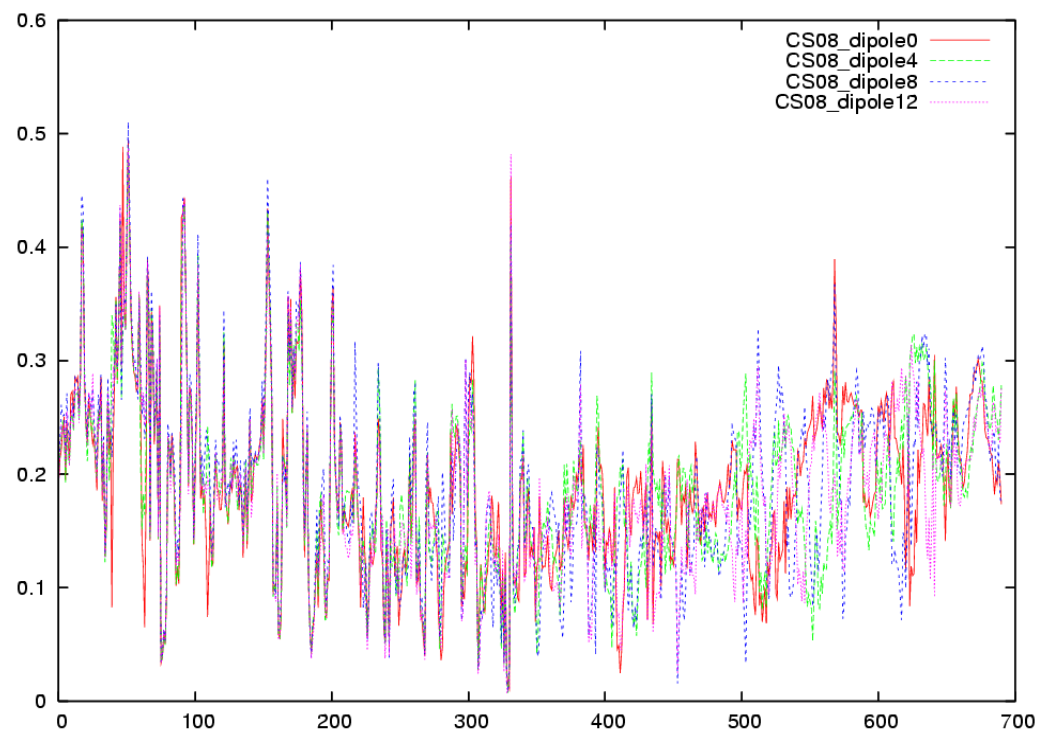
Corrected



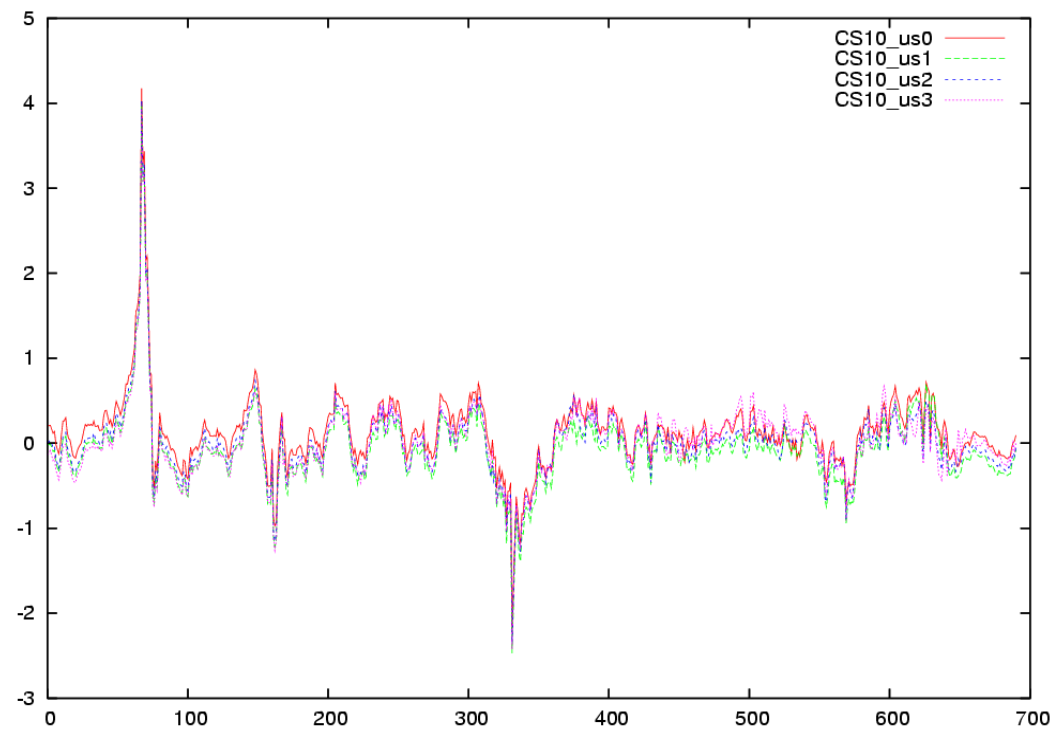
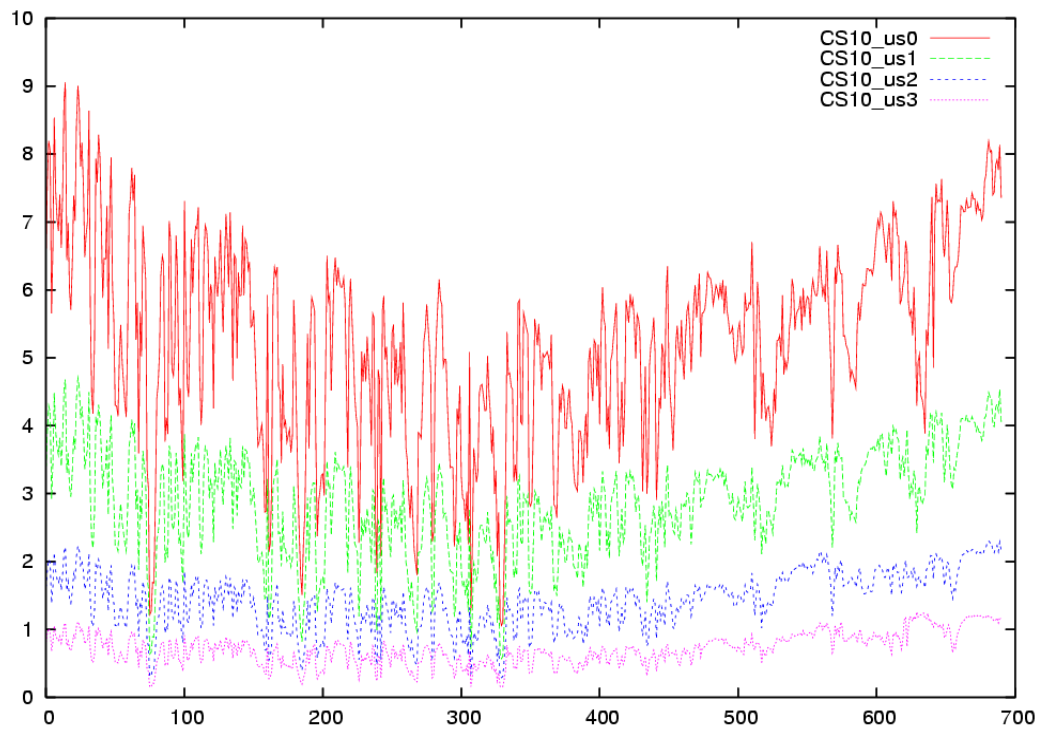
Processing

- Processed all data from subband 4 (57.187 MHz)

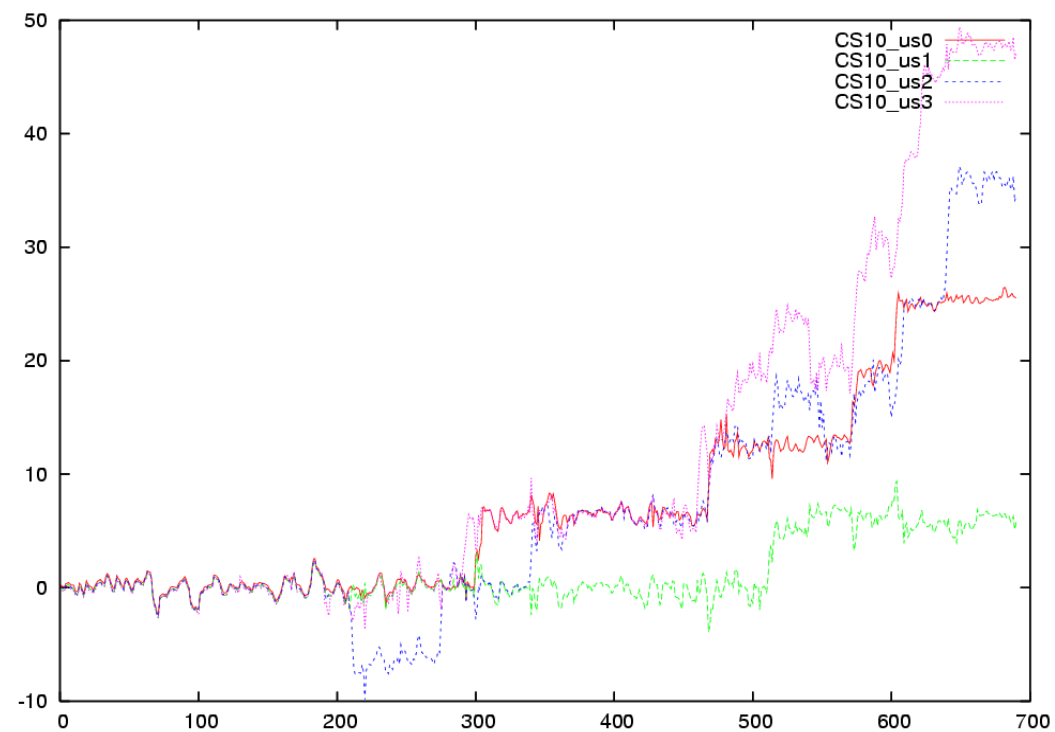
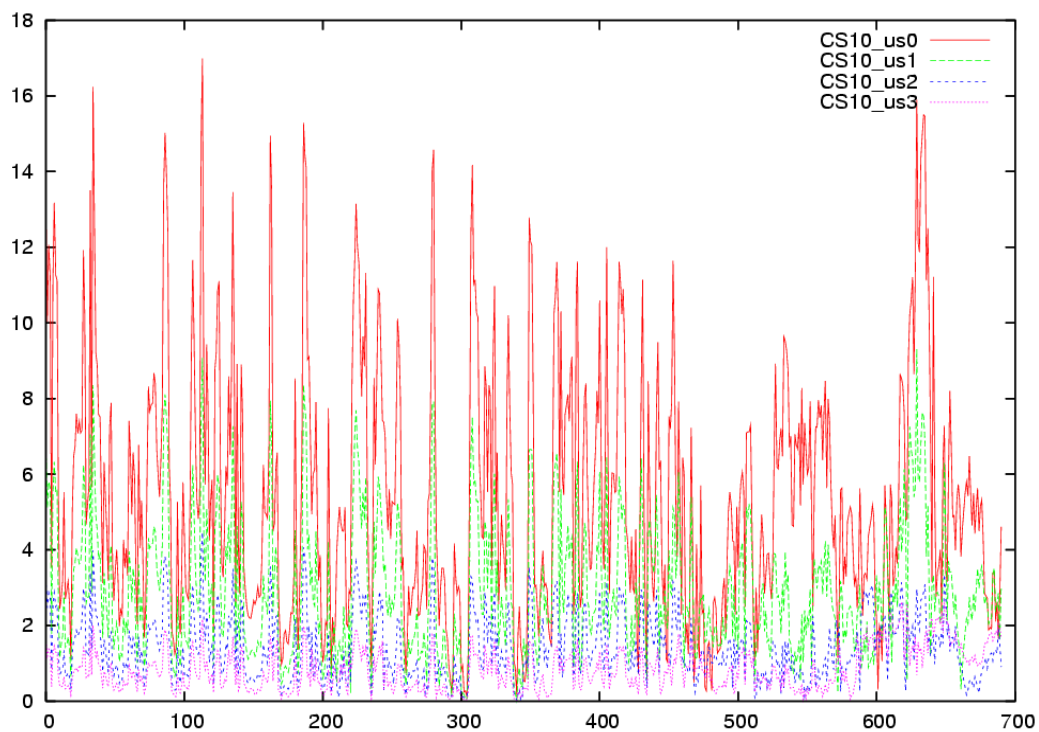
G_{11} CasA CS08



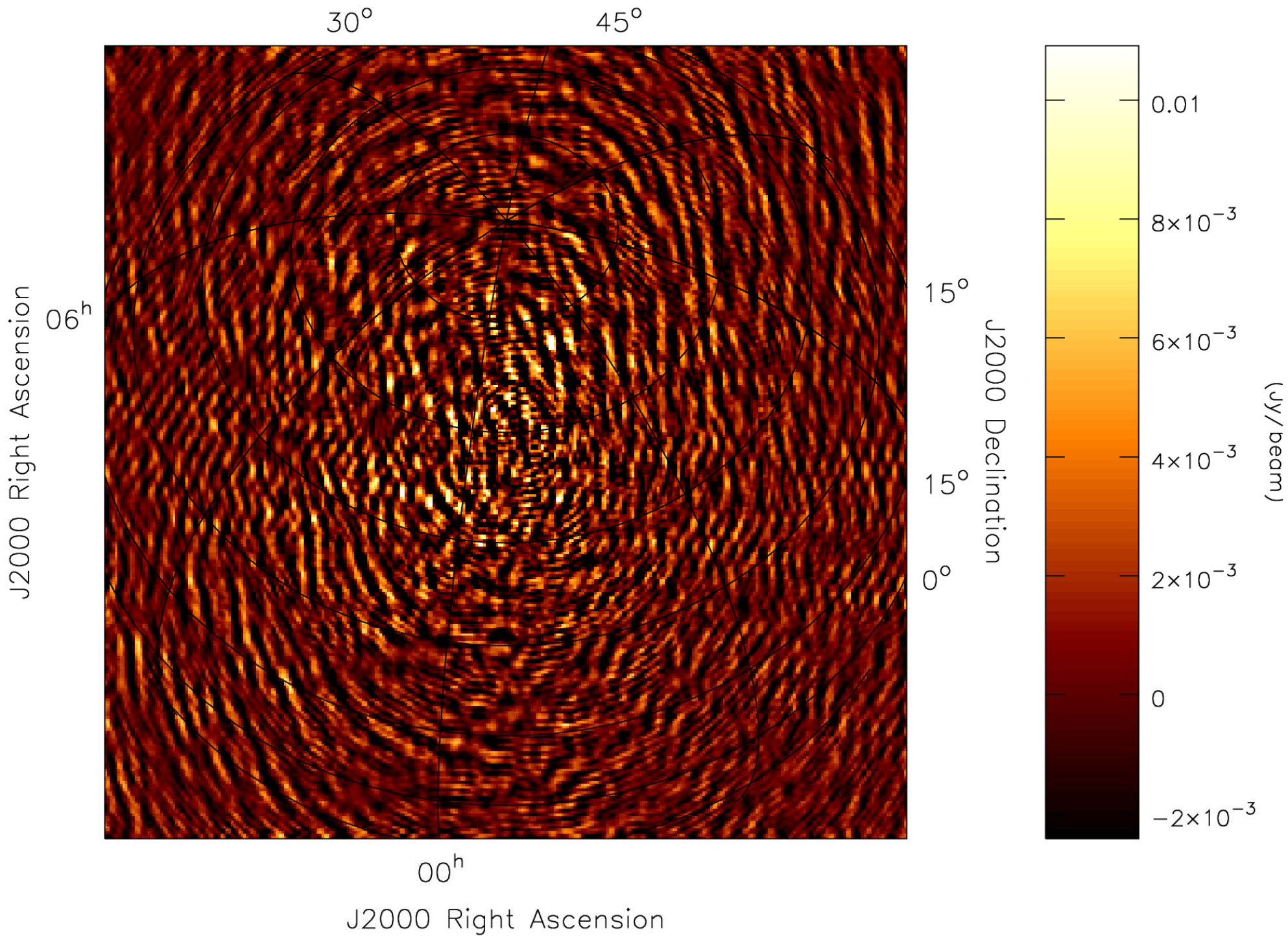
G_{11} CasA CS10



G₁₁ CygA CS10



Observed



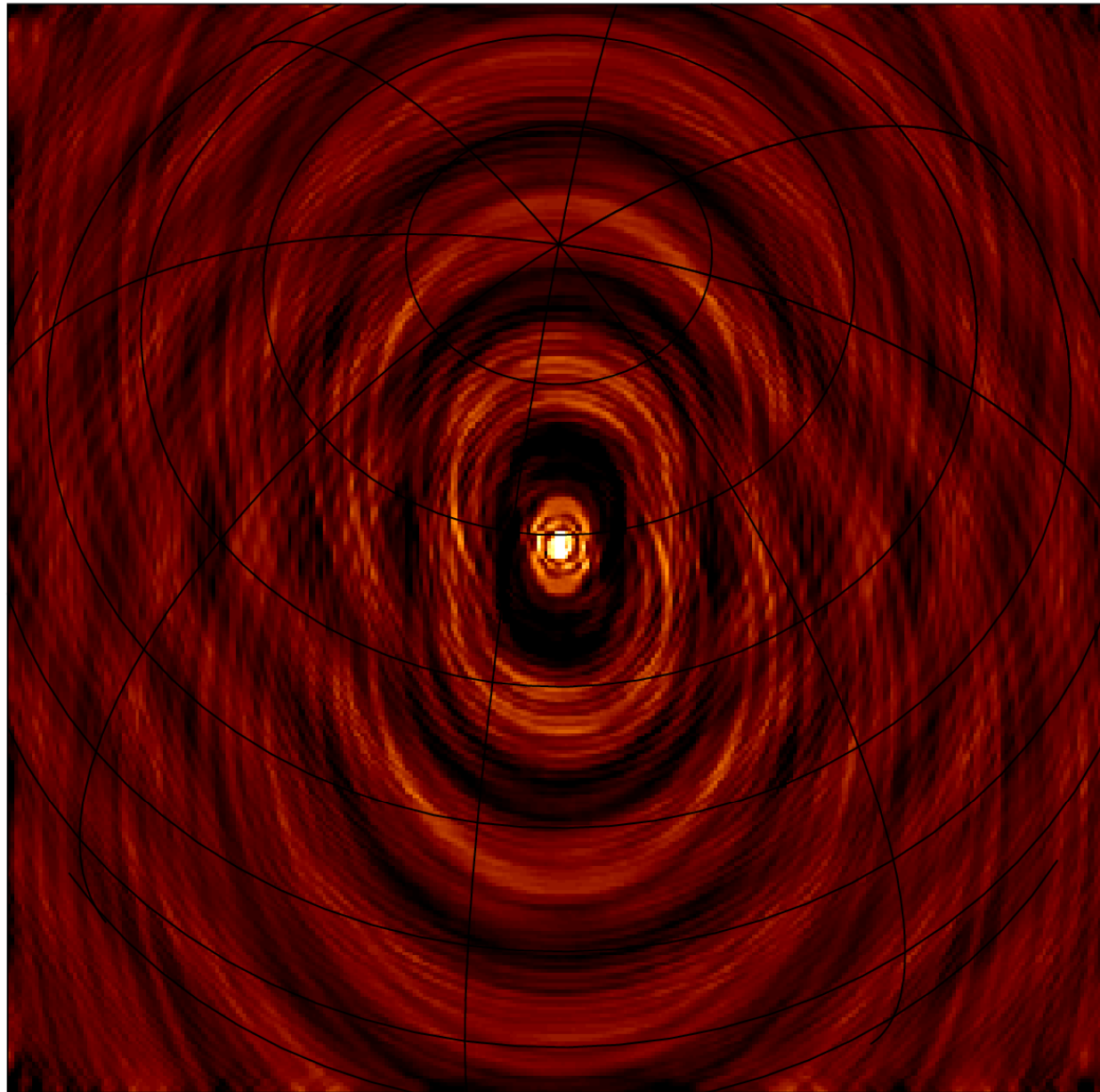
PSF

30°

45°

J2000 Right Ascension

06^h



15°

15°

0°

J2000 Declination

0.14

0.12

0.1

0.08

0.06

0.04

0.02

0

-0.02

(Jy/beam)

00^h

J2000 Right Ascension

Corrected

