

CS-1 developments: 28 mar - 4 apr 2007

General

- little attention to commissioning because of writing documentation for CDR

Rollout

- HBA antenna configuration: 16 (tile) + 8 NW-SE arm + 8 still due
- 6 tile delivery in early May ? (picture on AJPD)

Technical commissioning issues

- Stations

- 200 MHz clock problems, clock
- CS016 problems disappeared..
- amplitude dips appeared on (LBA data, see L1810 results)

- CEP

Progress reports on data analysis

Calibration:

Imaging

- Field shift problem (Amitesh report)

Noise/RFI analysis

- Casey Law analysis of L1065 (LBA)

Specific observations

- Hanno Spreeuw Jupiter analysis

Progress reports on modelling and simulations

Beam modelling

Ionospheric modelling

Observing schedule and planning

Jupiter: 7 april 2007 ??

Datasets for CDR / Emmen / PR !!

- last weekend 24 h sessions failed : cover 15 (2.5) 72.5 MHz in 24 subbands

CS008 (ANT9) autocorrelation SB3 (35 MHz) L1797 25Mar07

jop64_4/ger/LOFAR/CS1/data/25mar07-L1797/L2007_01797_SB3.MS Spectral Window: 1 Polarization: 1 Fi
XX YY Antenna1 = 9 Antenna2 = 9

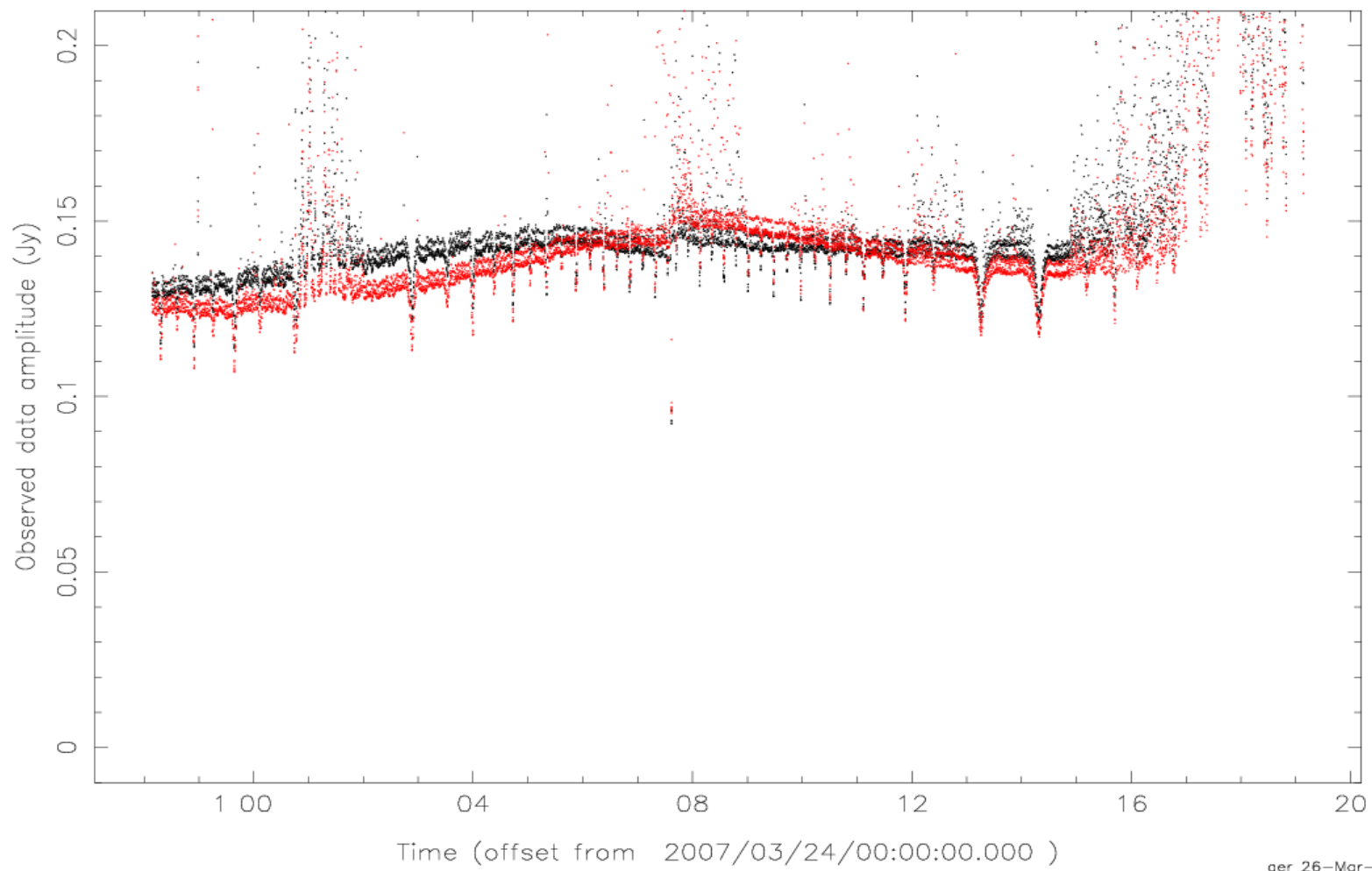
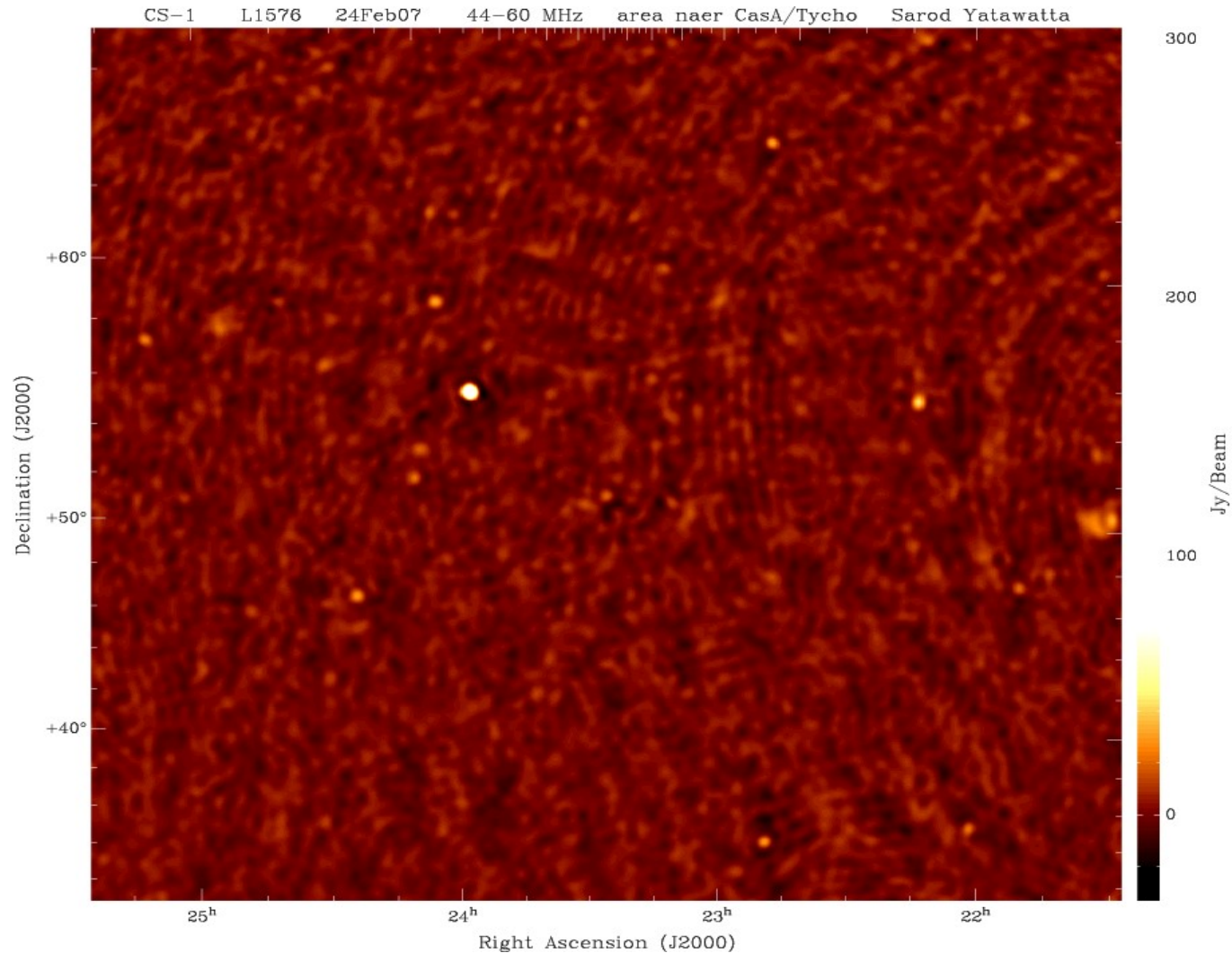


Image used in discussion on flux scale and dynamic range in images...

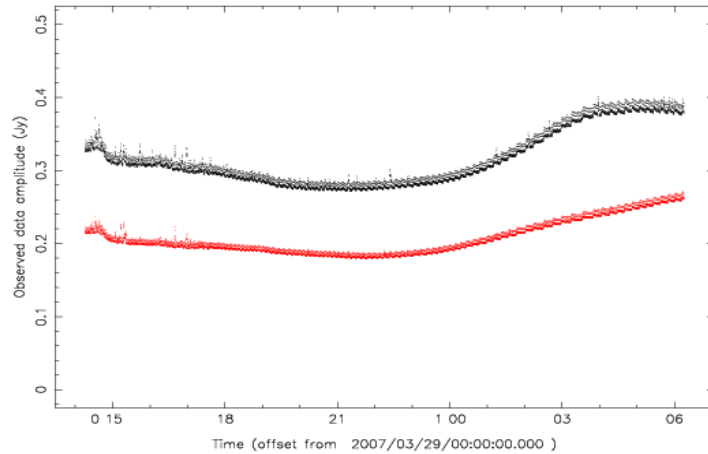
L1576 area (24Feb07) near Cas A/Tycho
(Note: KVIS display, wrong coordinates)



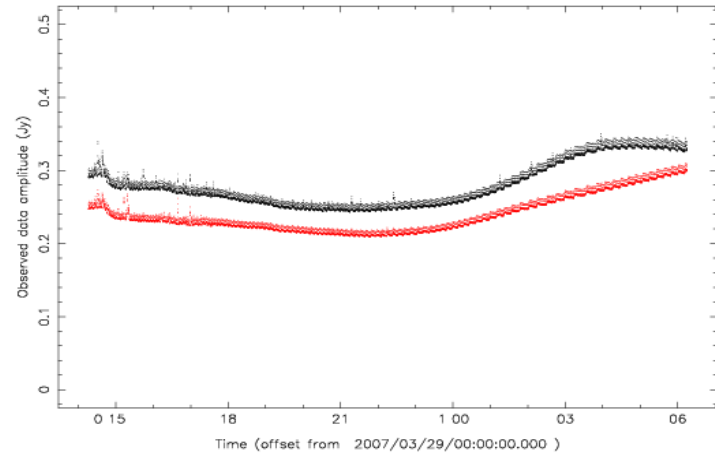
TP/AC tracks for 4 HBA antennas

29 March 2007 L1807 225 MHz

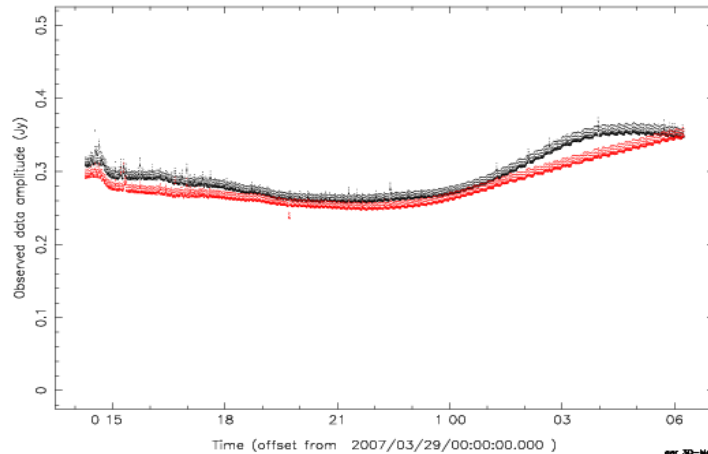
p64_4/ger/LOFAR/CS1/data/29mar07-L1807/L2007_01807_SB6-8.MS Spectral Window: 1 Polarization: 1
XX YY Antenna1 = 1 Antenna2 = 1



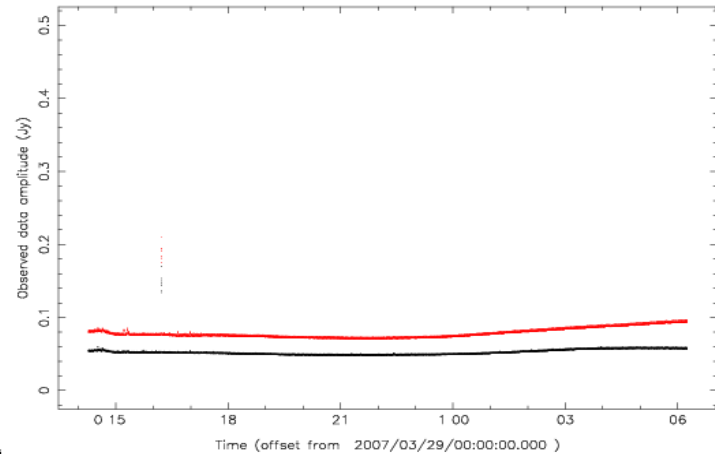
p64_4/ger/LOFAR/CS1/data/29mar07-L1807/L2007_01807_SB6-8.MS Spectral Window: 1 Polarization: 1
XX YY Antenna1 = 2 Antenna2 = 2



p64_4/ger/LOFAR/CS1/data/29mar07-L1807/L2007_01807_SB6-8.MS Spectral Window: 1 Polarization: 1
XX YY Antenna1 = 3 Antenna2 = 3

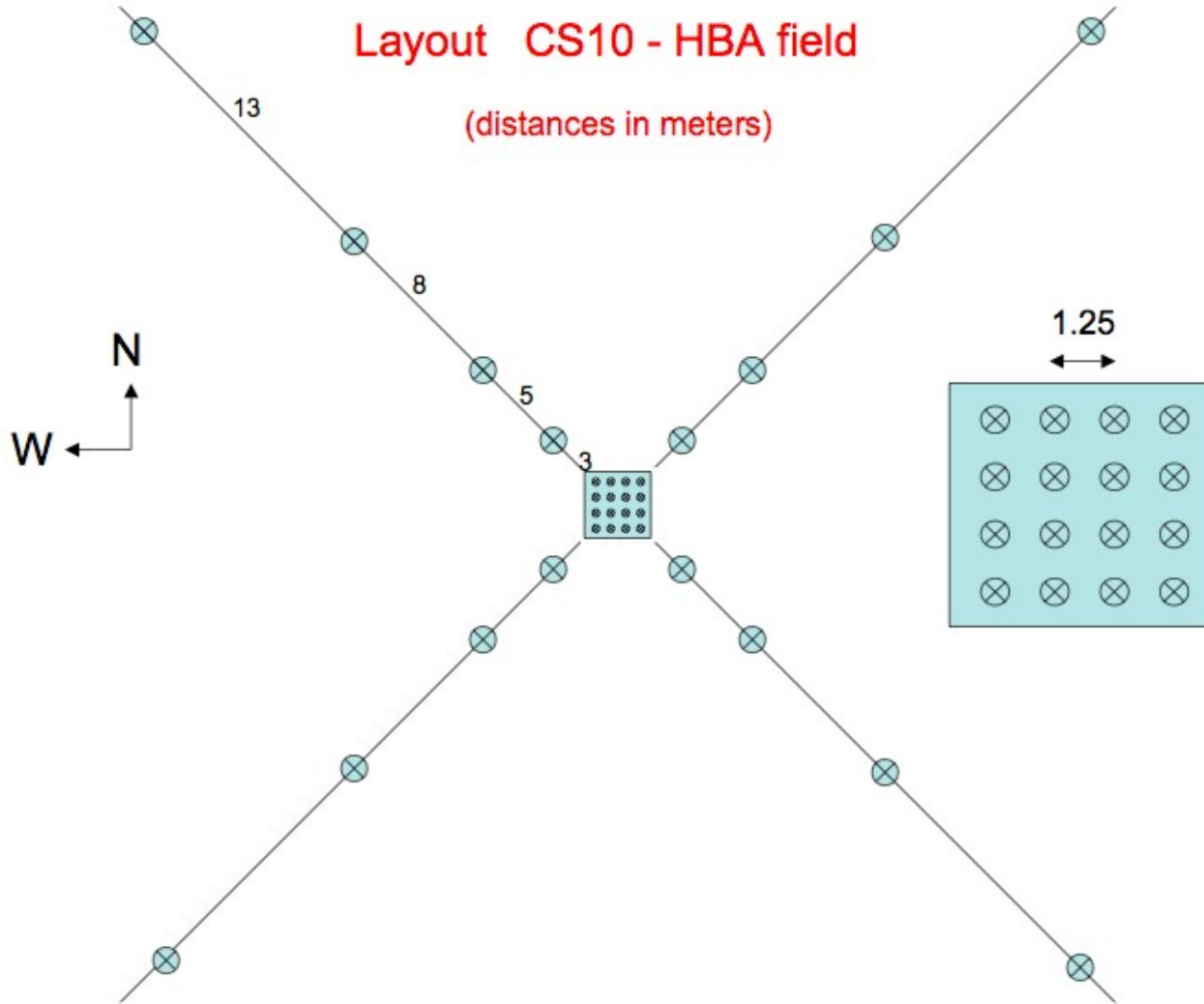


p64_4/ger/LOFAR/CS1/data/29mar07-L1807/L2007_01807_SB6-8.MS Spectral Window: 1 Polarization: 1
XX YY Antenna1 = 4 Antenna2 = 4

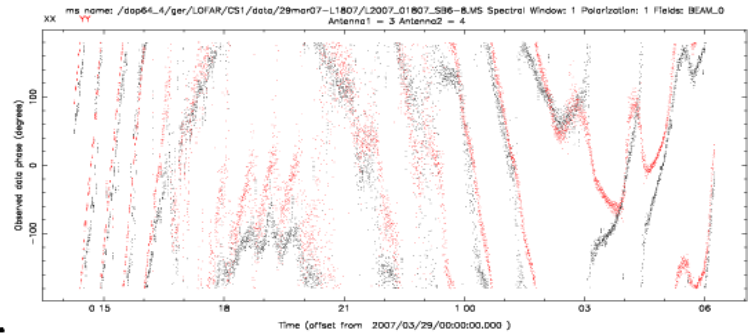
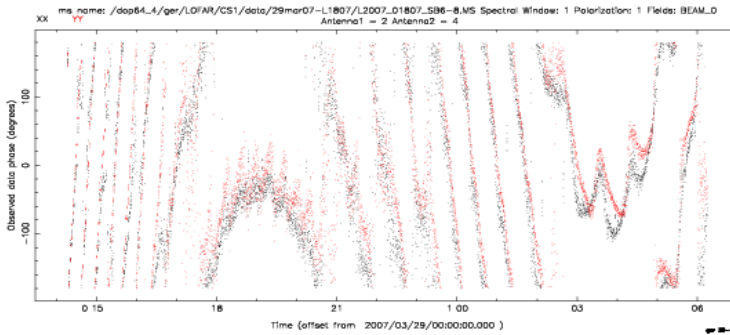
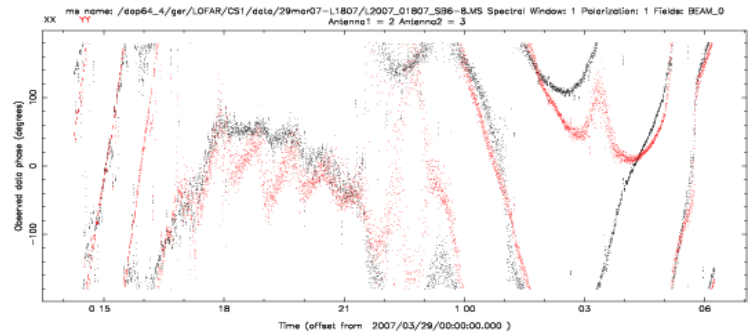
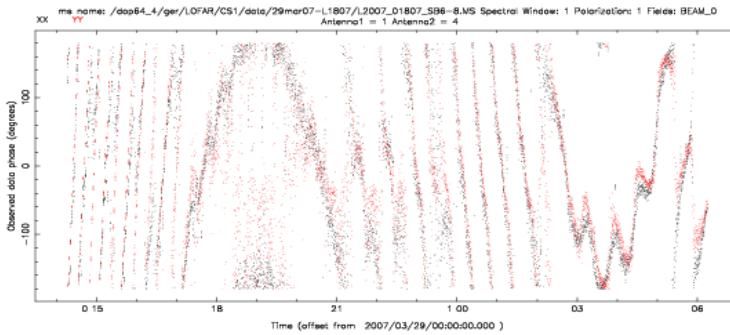
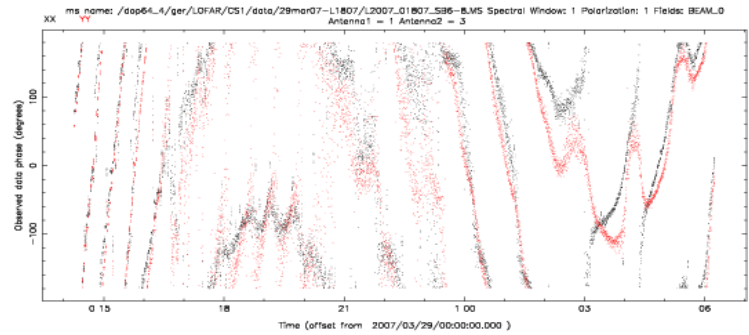
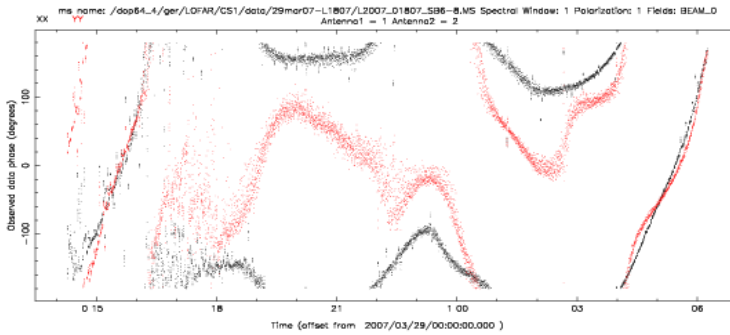


Layout CS10 - HBA field

(distances in meters)

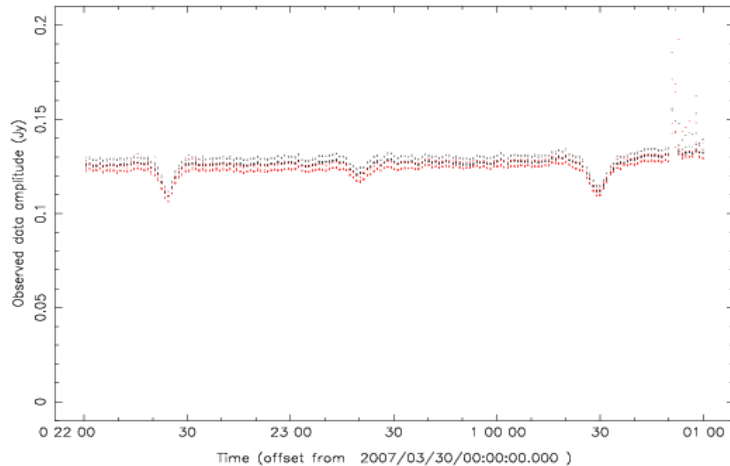


First interferometric fringes between 4 HBA antennas on 5, 8, 13(2x), 21 and 26m baselines (225 MHz) 29 March 2007 L1807

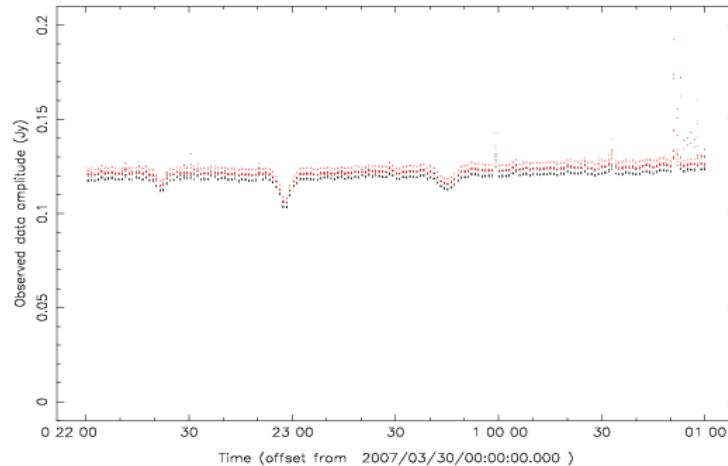


Symmetric 'dips' in LBA TP/AC amplitudes 30/31 March 2007 L1810

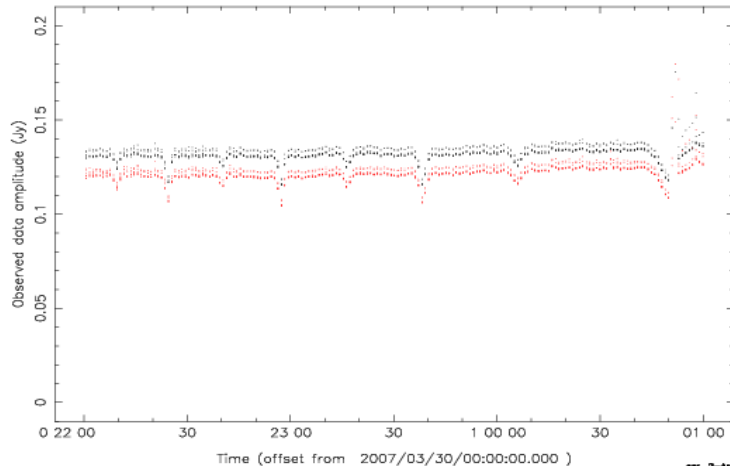
p64_4/ger/LOFAR/CS1/data/30mar07-L1810/L2007_01810_SB3-5.MS Spectral Window: 3 Polarization: 1
XX YY Antenna1 = 1 Antenna2 = 1



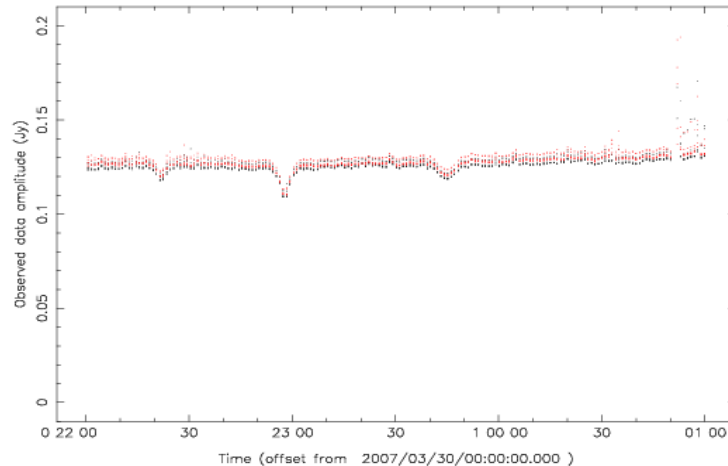
p64_4/ger/LOFAR/CS1/data/30mar07-L1810/L2007_01810_SB3-5.MS Spectral Window: 3 Polarization: 1
XX YY Antenna1 = 5 Antenna2 = 5



p64_4/ger/LOFAR/CS1/data/30mar07-L1810/L2007_01810_SB3-5.MS Spectral Window: 3 Polarization: 1
XX YY Antenna1 = 9 Antenna2 = 9

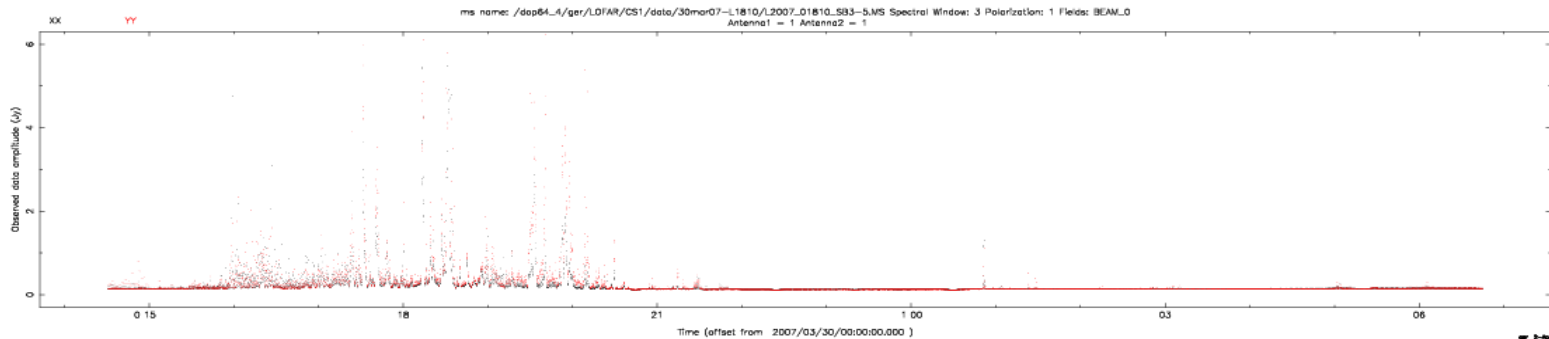
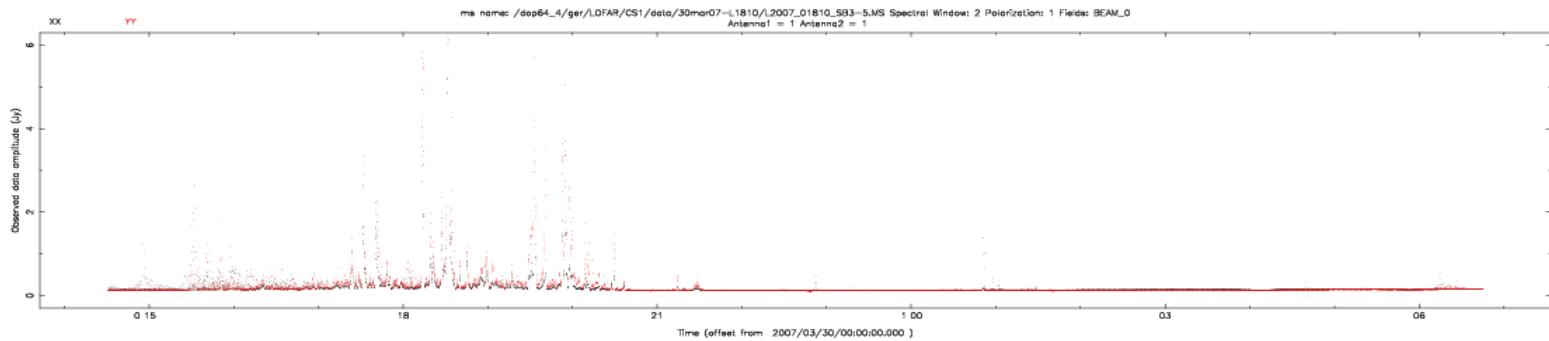
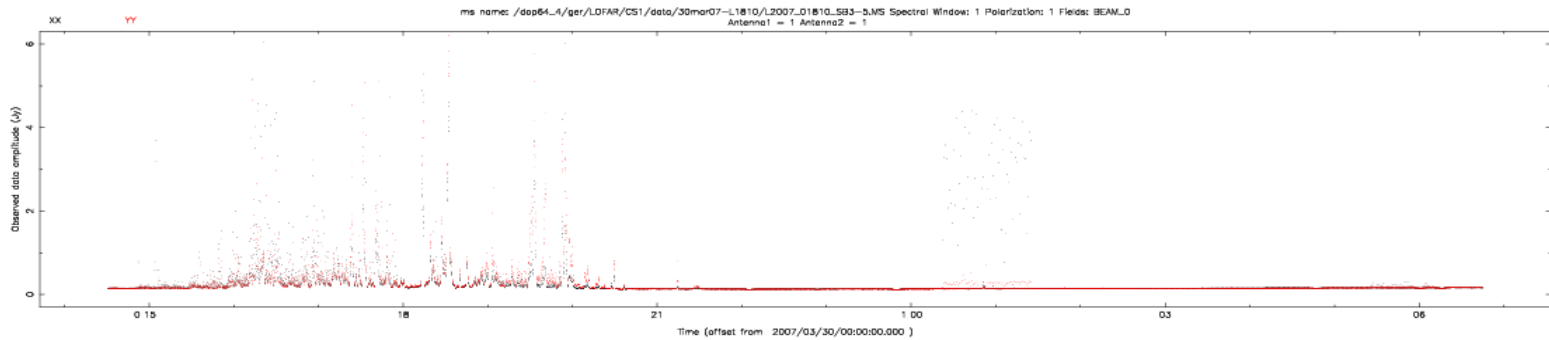


p64_4/ger/LOFAR/CS1/data/30mar07-L1810/L2007_01810_SB3-5.MS Spectral Window: 3 Polarization: 1
XX YY Antenna1 = 13 Antenna2 = 13

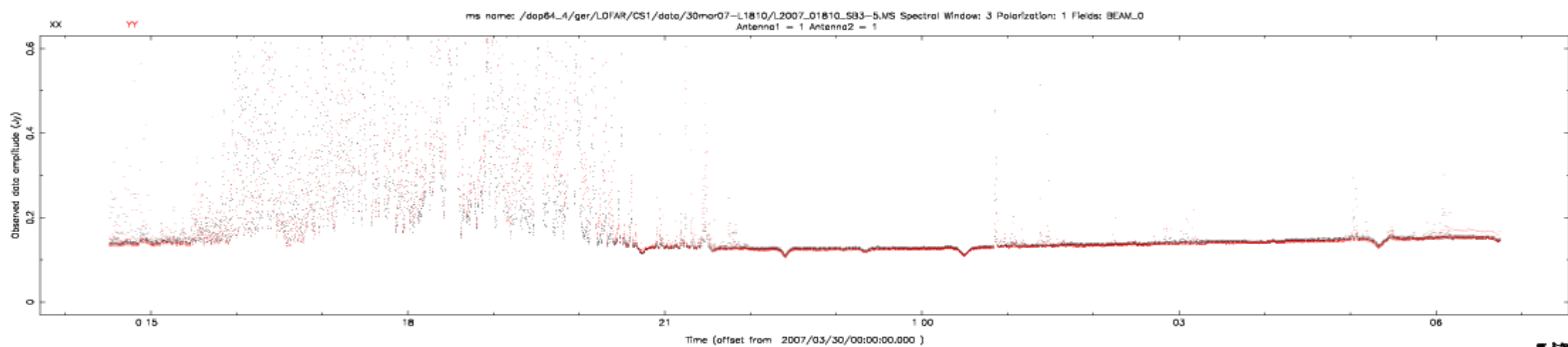
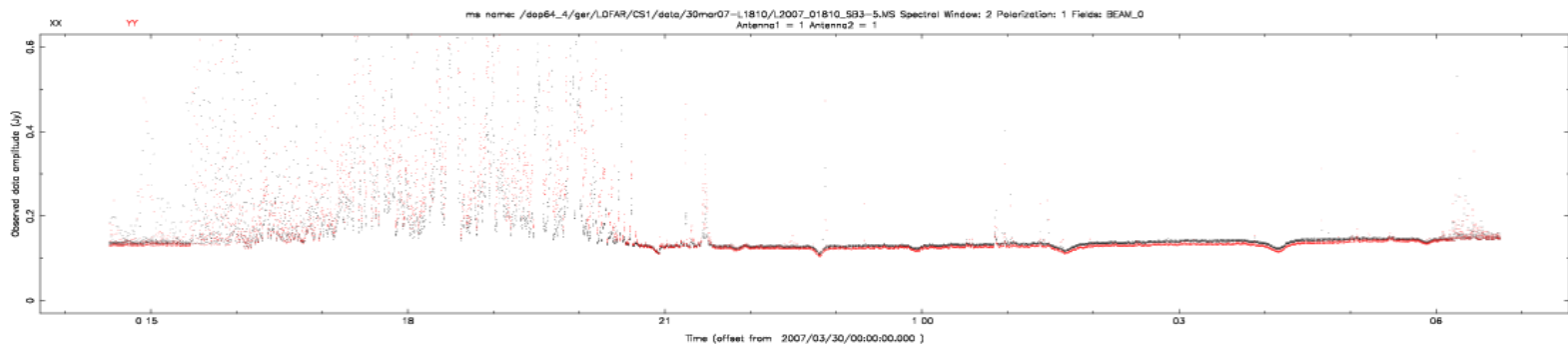
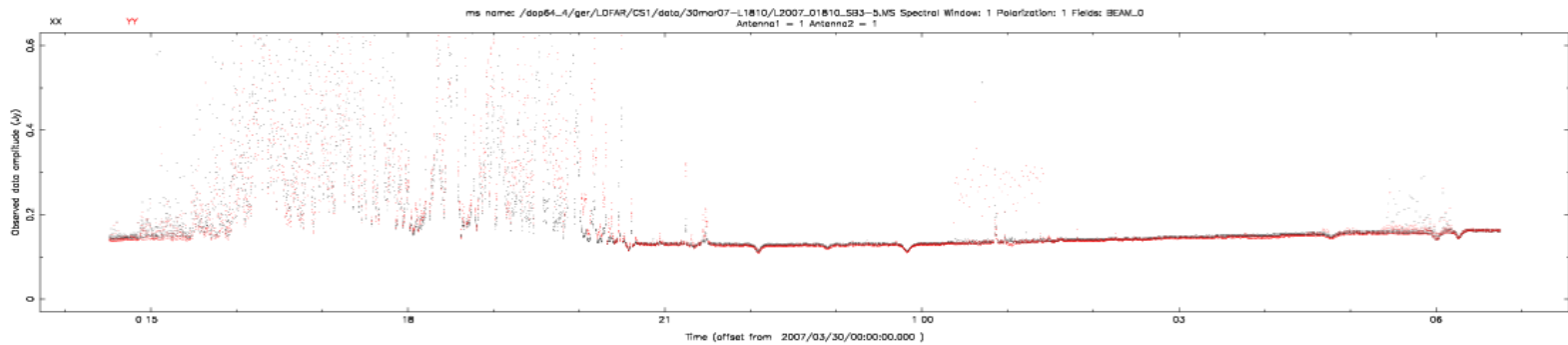


Strong evening RFI in TP/AC amplitudes

30/31 March 2007 L1810 (22.5, 25, 27.5 MHz)

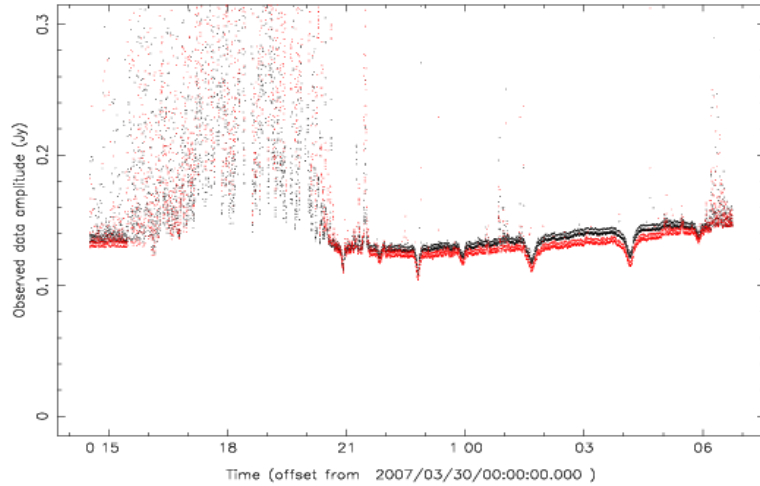


X10 Evening RFI and symmetric 'dips' in TP/AC amplitudes 30/31 March 2007 L1810 (22.5, 25, 27.5 MHz)

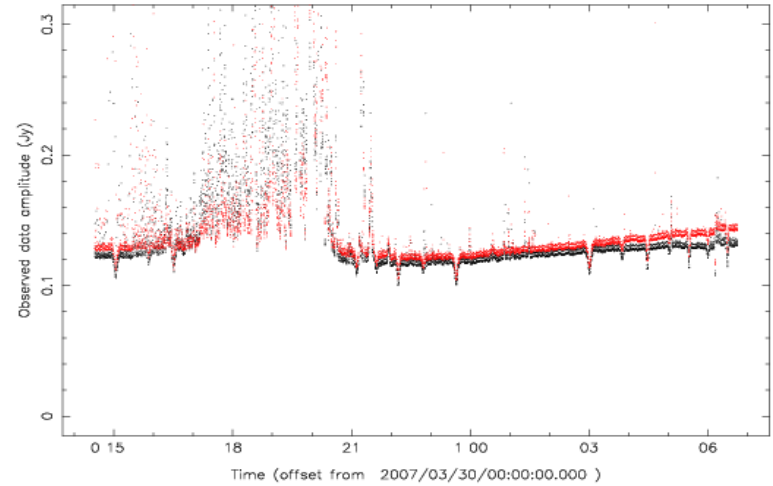


Evening RFI and symmetric 'dips' in TP/AC amplitudes 30/31 March 2007 L1810 (25.0 MHz)

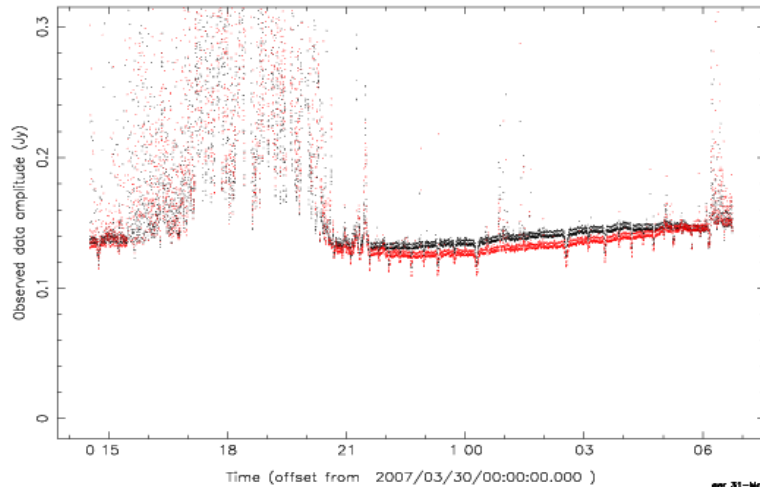
p64_4/ger/LOFAR/CS1/data/30mar07-L1810/L2007_01810_SB3-5.MS Spectral Window: 2 Polarization: 1
XX YY Antenna1 = 1 Antenna2 = 1



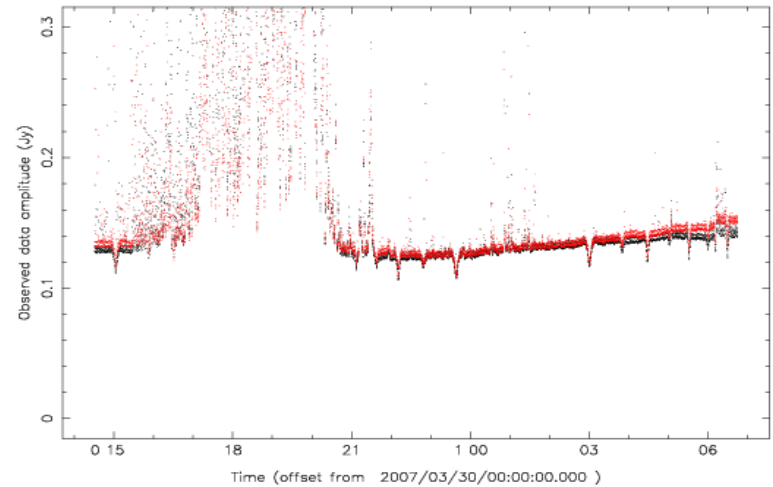
p64_4/ger/LOFAR/CS1/data/30mar07-L1810/L2007_01810_SB3-5.MS Spectral Window: 2 Polarization: 1
XX YY Antenna1 = 5 Antenna2 = 5



p64_4/ger/LOFAR/CS1/data/30mar07-L1810/L2007_01810_SB3-5.MS Spectral Window: 2 Polarization: 1
XX YY Antenna1 = 9 Antenna2 = 9



p64_4/ger/LOFAR/CS1/data/30mar07-L1810/L2007_01810_SB3-5.MS Spectral Window: 2 Polarization: 1
XX YY Antenna1 = 13 Antenna2 = 13



CS010 baselines (160 Mhz clock, all dipoles)

30/31 March 2007 L1810 60 MHz

