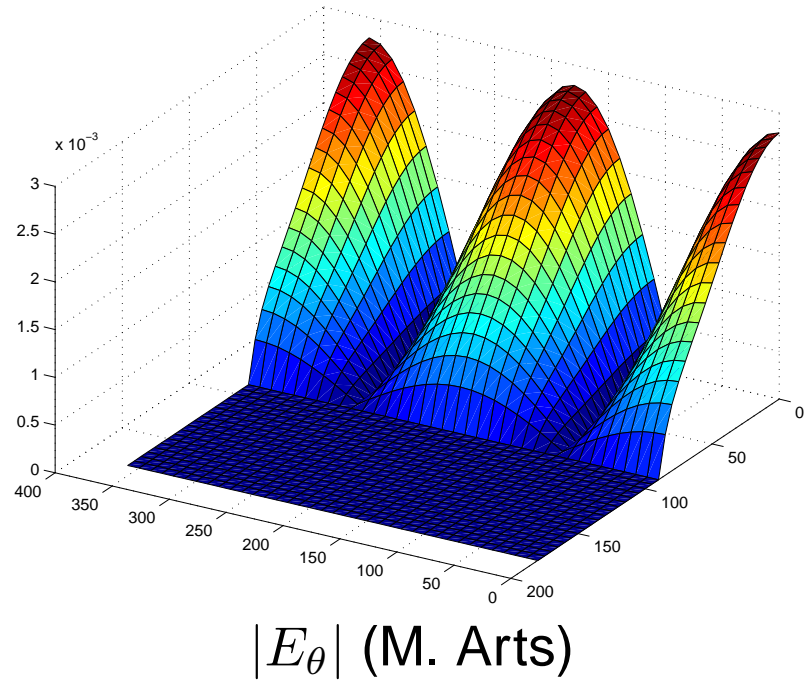
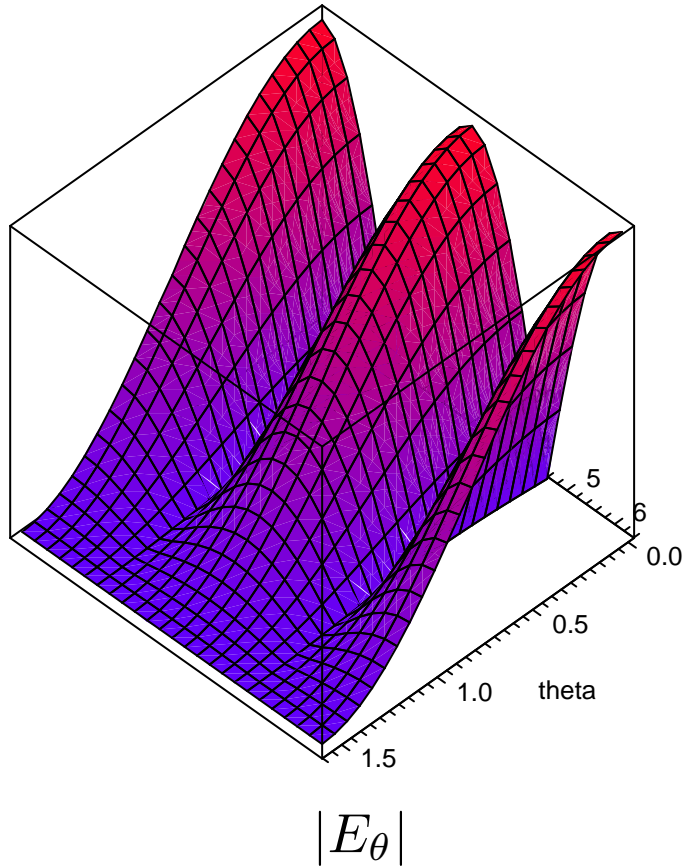


LOFAR CS1

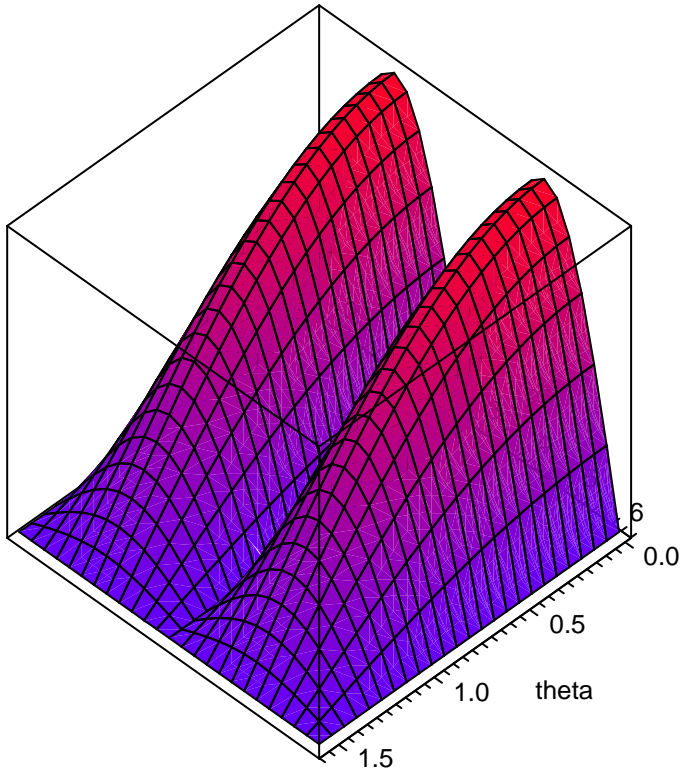
Calibration and Imaging

(cont.)

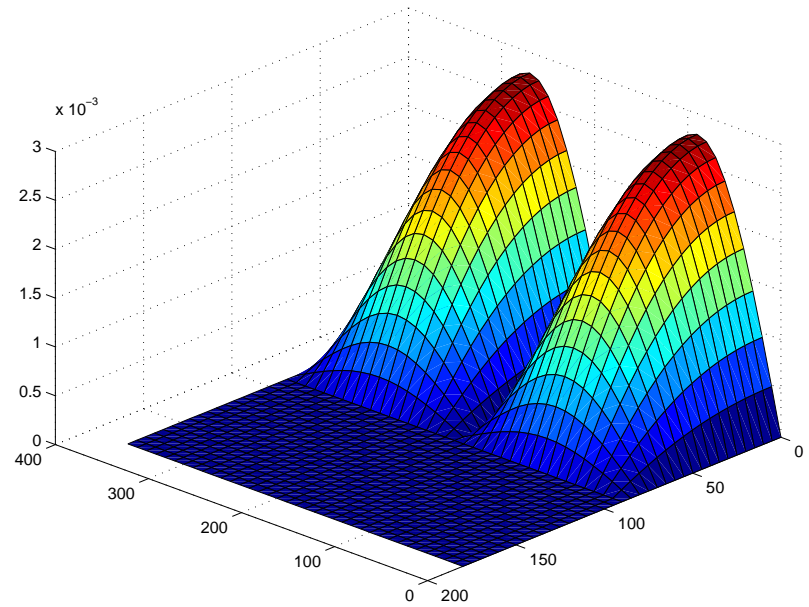
Droopy Dipole Beam



Droopy Dipole Beam

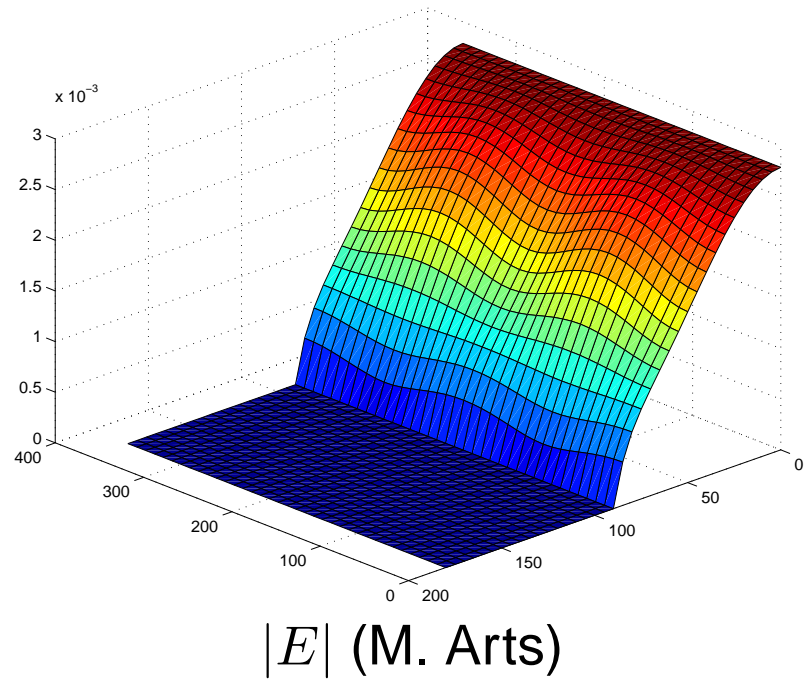
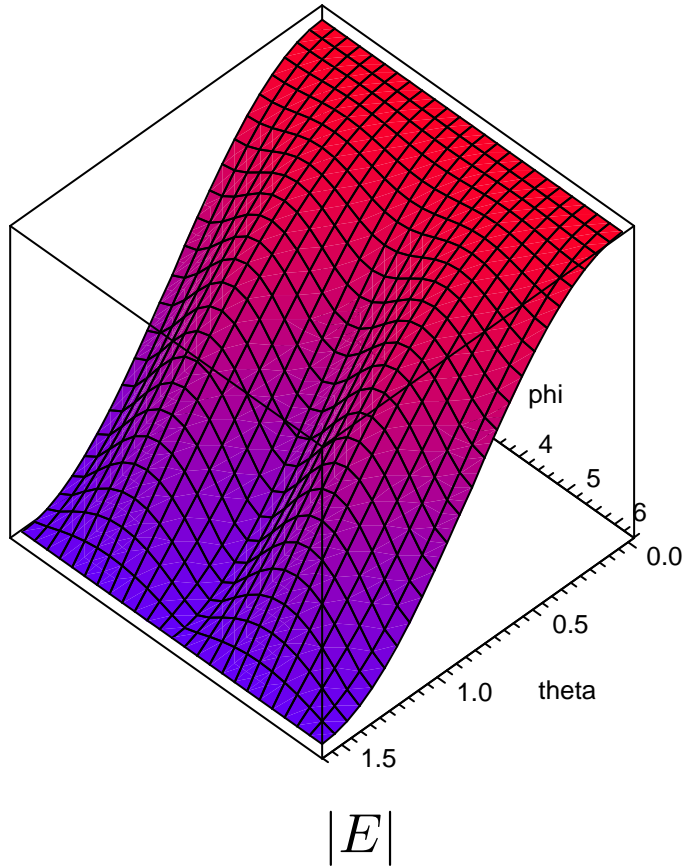


$|E_\phi|$

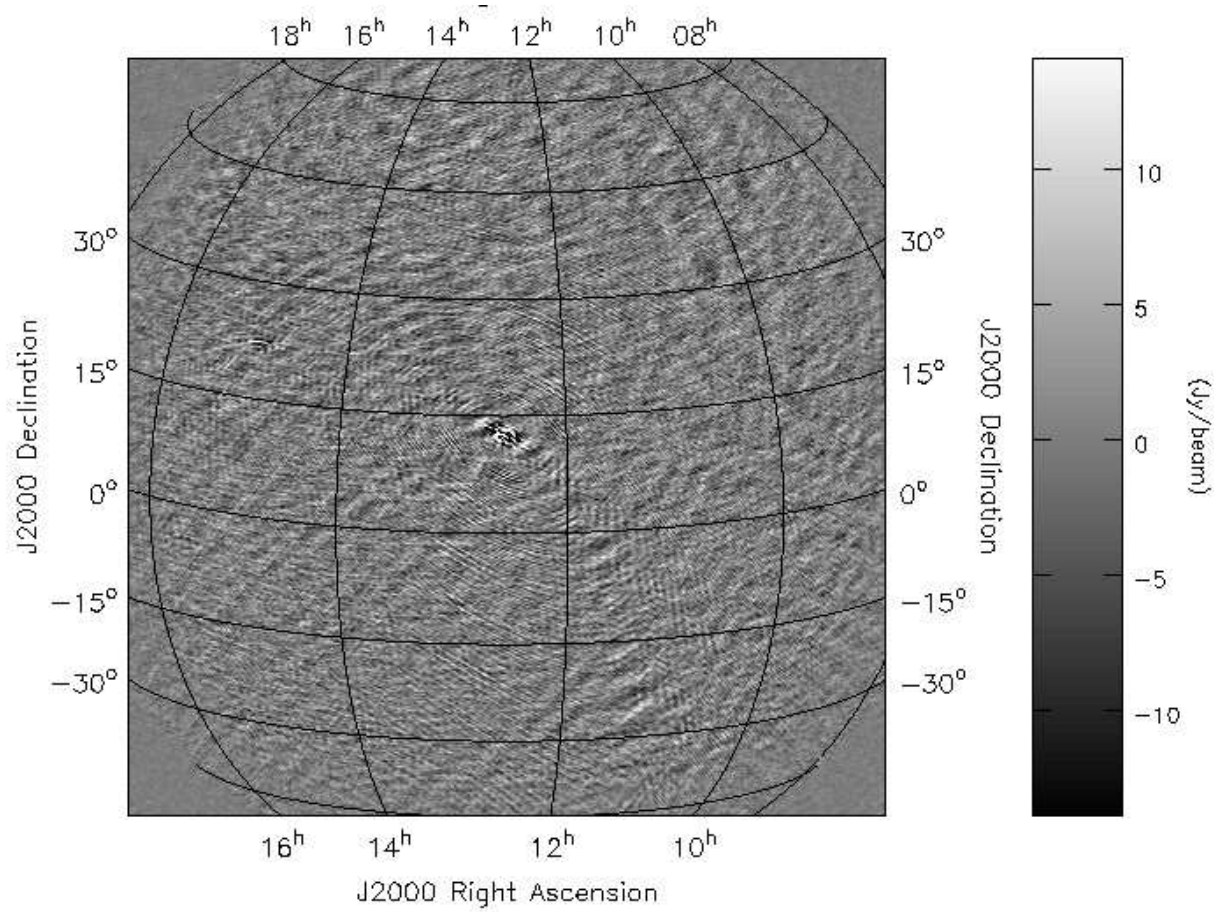


$|E_\phi|$ (M. Arts)

Droopy Dipole Beam

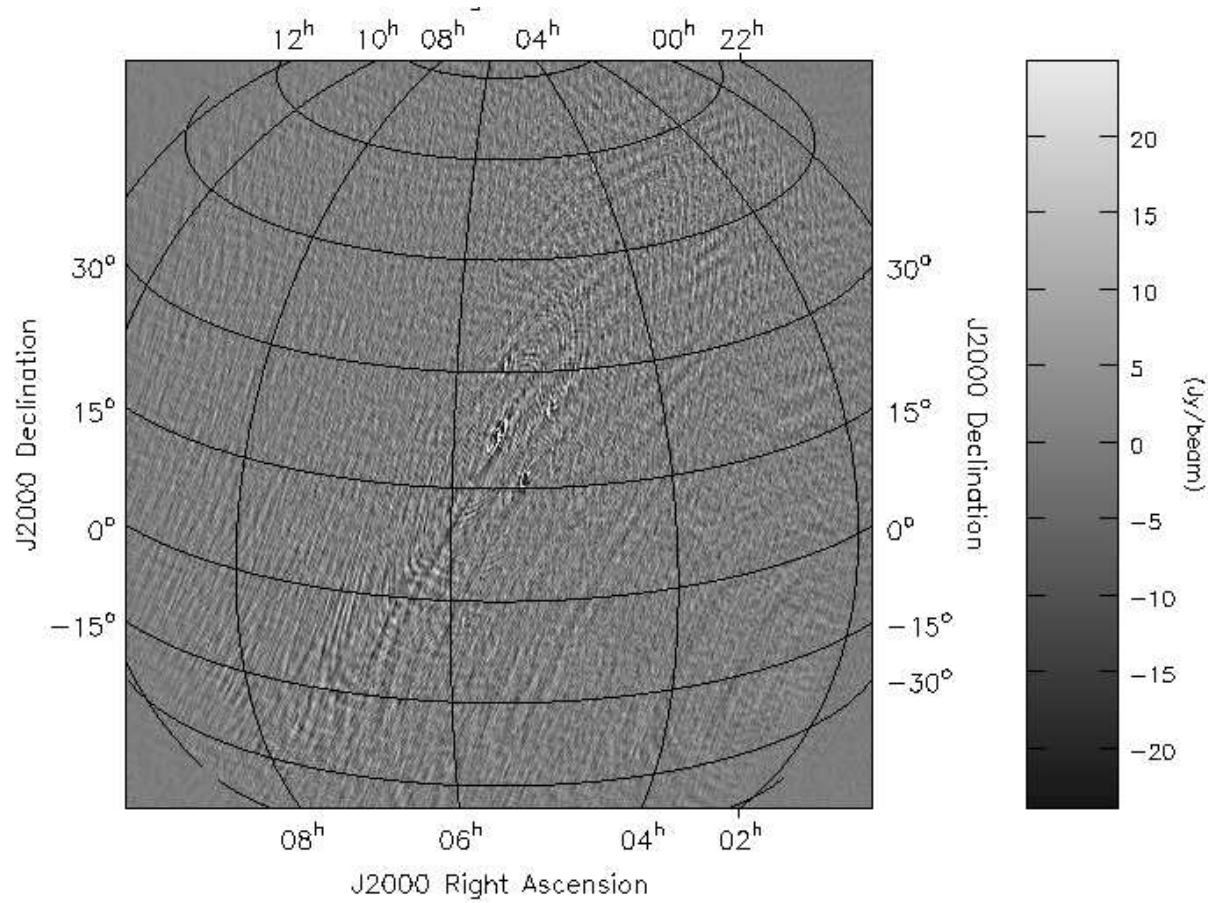


Viro A



L2007_01576, subbands 2,3,4,5

Tau A



L2007_01576, subbands 2,3,4,5