

CS-1 problems 20080117

Michiel Brentjens

Bug list (1)

RSP ring on

- Strange oscillations in autocorrelations (Mamta's talk)
- Zero phases in all intra-station baselines

Waveform generator test on CS010

- Somewhat irregular phases
- Sometimes a blocked structure in cross correlation matrix
- Sometimes signal paths do not start synchronously, resulting in phase differences of $n \times \nu_{\text{clk}}^{-1}$

Bug list (2)

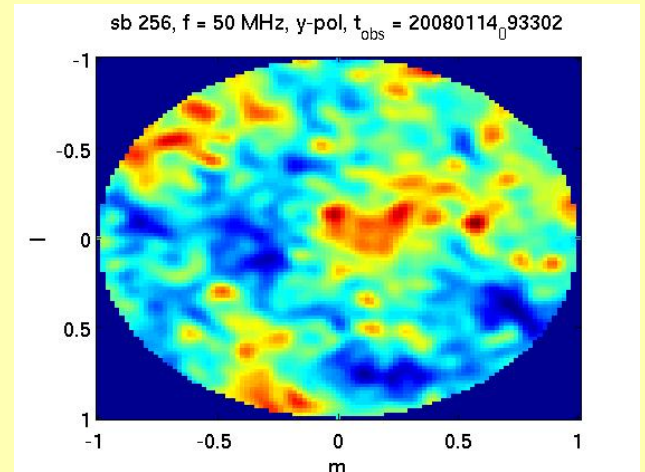
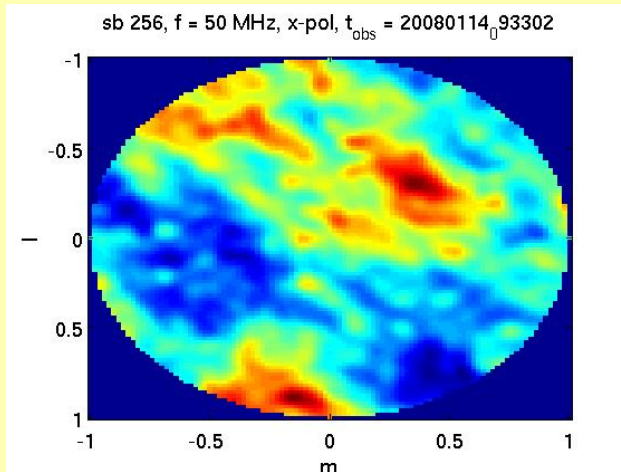
Imaging with LBA dipoles on CS010

- No good images between ≈ 20 and 80 MHz (“The Bug” This talk)

Other

- No pulsar detections with HBA tiles
- No LBA fringes between Exloo and Dwingeloo
- HBA tracking experiment L2007_04783 not understood
- Beamformer: stations located at 50 m from earth centre: fixed, not yet rolled out

The Bug



Features

Good

- Does not occur in Effelsberg
- Images below $\approx 20 - -30$ MHz fine
- Images of RFI sources are fine
- Images with antennae switched off are fine (pure noise)

Features

Bad

- Error pattern shifts position and structure as a function of time
- Error pattern scales inversely with frequency
- Position shift appears to be parallel to GC position shift, but needs to be confirmed in long observation
- Problem dominated by a few short baselines in subrack 2, involving a small subset of antennae near antenna 44

Features

Ugly

- Switching off the worst antennae did only change the pattern, not the problem
- Imaging with only subrack 0, 1, or 2 had the same result.
- Decrease of problem when RCU lowpass filter cuts off suggests relation with data introduced before the RCU
- Observations with cables only or noise source only yielded noisy map \Rightarrow not strictly additive
- Strong point sources are mapped fine \Rightarrow not strictly multiplicative
- Firmware and software versions in Effelsberg are the same (or so they say)
- Changing RSPDriver.XC_GAIN from 512 to 4096 to 32767 did not change the nature of the problem \Rightarrow possibly not related to high/low FP format.

How to proceed

- Compare flash images of RSP boards to see if they are bitwise identical
- Remove HBA related stuff from RSPDriver config files
- Power down entire system and bring it back online bit-by-bit, checking whatever can be checked at each stage
- Analyze **all** firmware and software changes since oct 5 by hand
- Go home and get drunk