

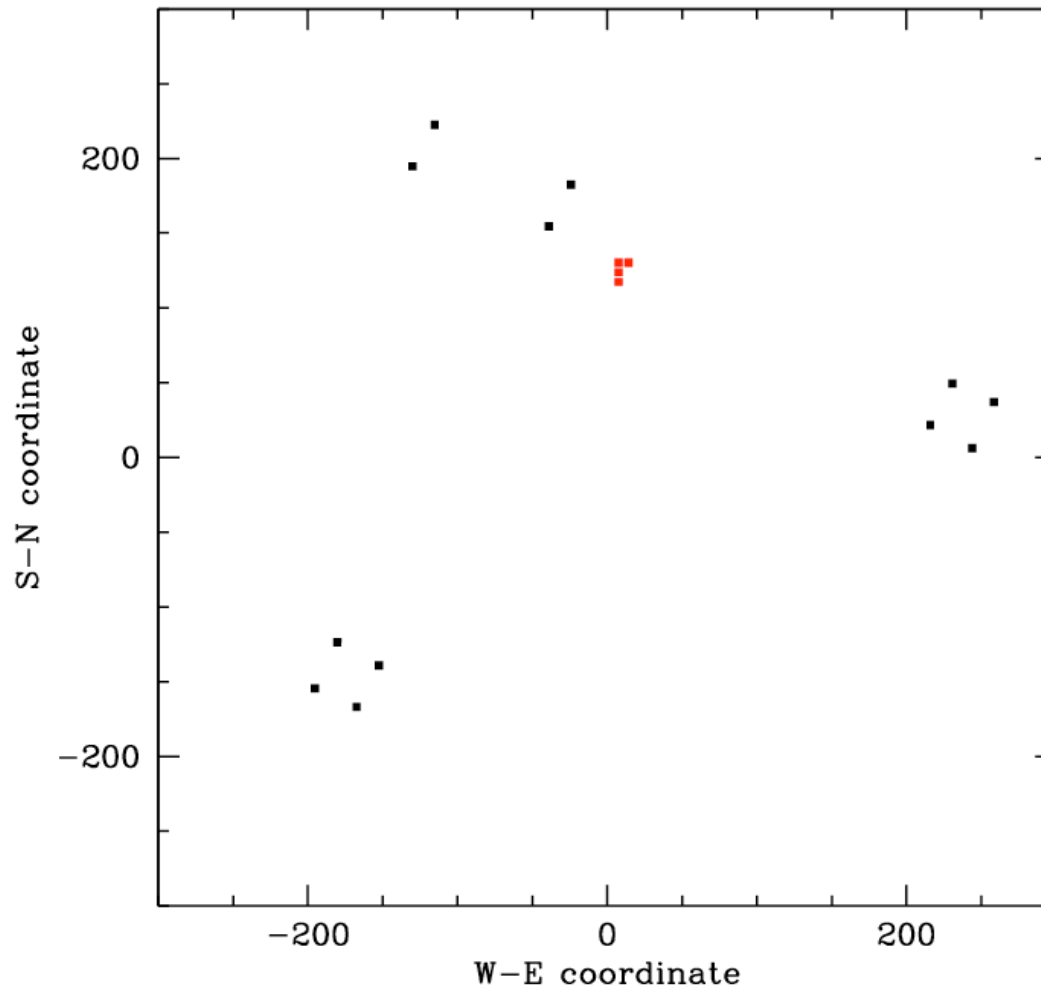
Some results with HBA tiles (28Jan - 4Feb 2008)

CS-1 meeting , 6-Feb-2008

Ger de Bruyn (+Michiel Brentjens)

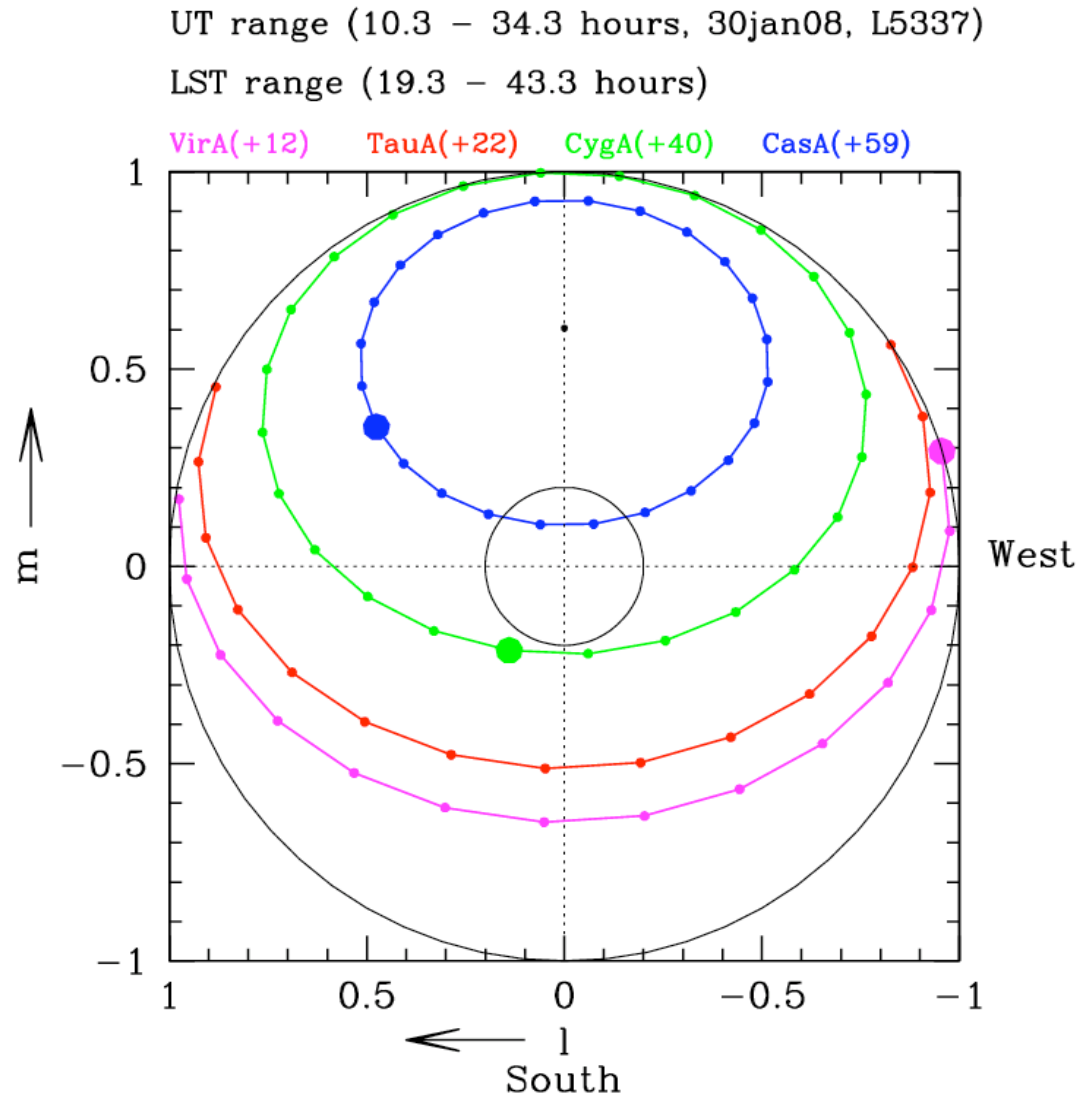
HBA layout with tile 3,4,5,6

L5337 positions 4 tiles, 12 dipoles (30 Jan 2008)



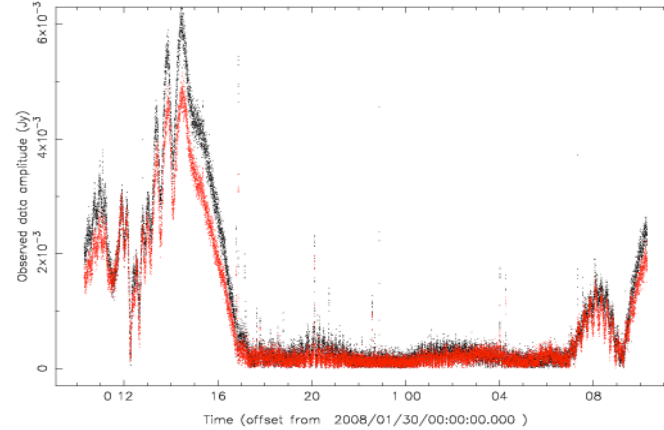
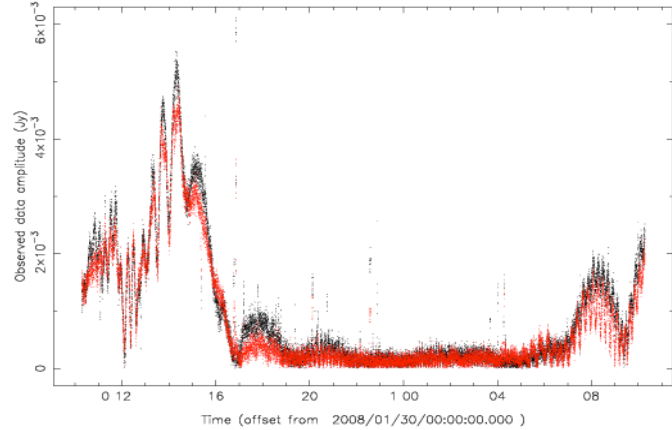
Cartoon of A-team
source tracks, and all 4
tilebeamformer locations
in zenith

for 24h observation
L5337 (30 Jan 08)

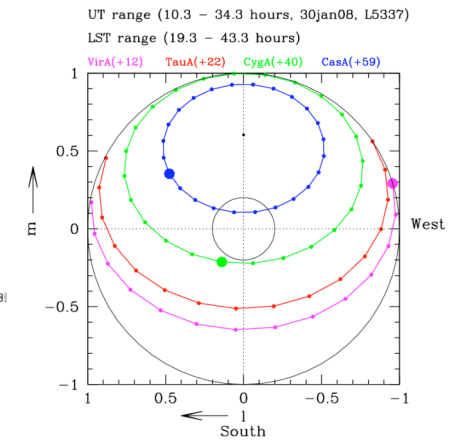
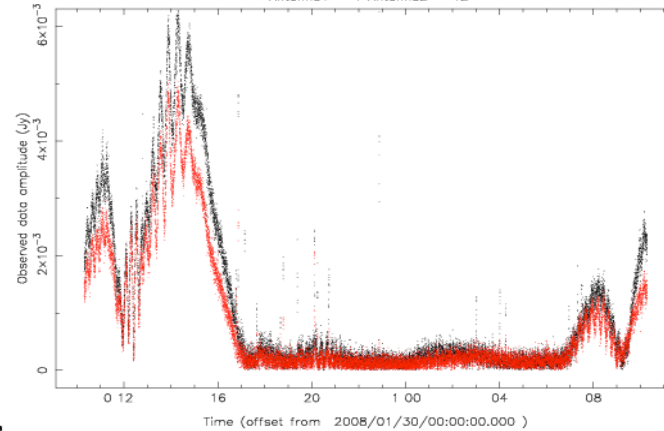
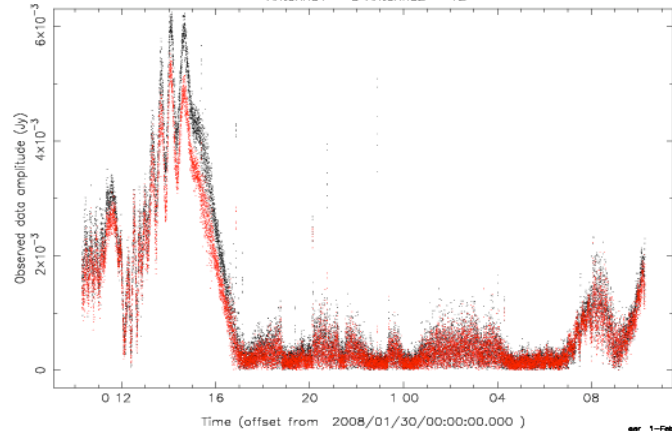


correlations between dipole - tiles (zenith centered) (L5337, 30 jan08)

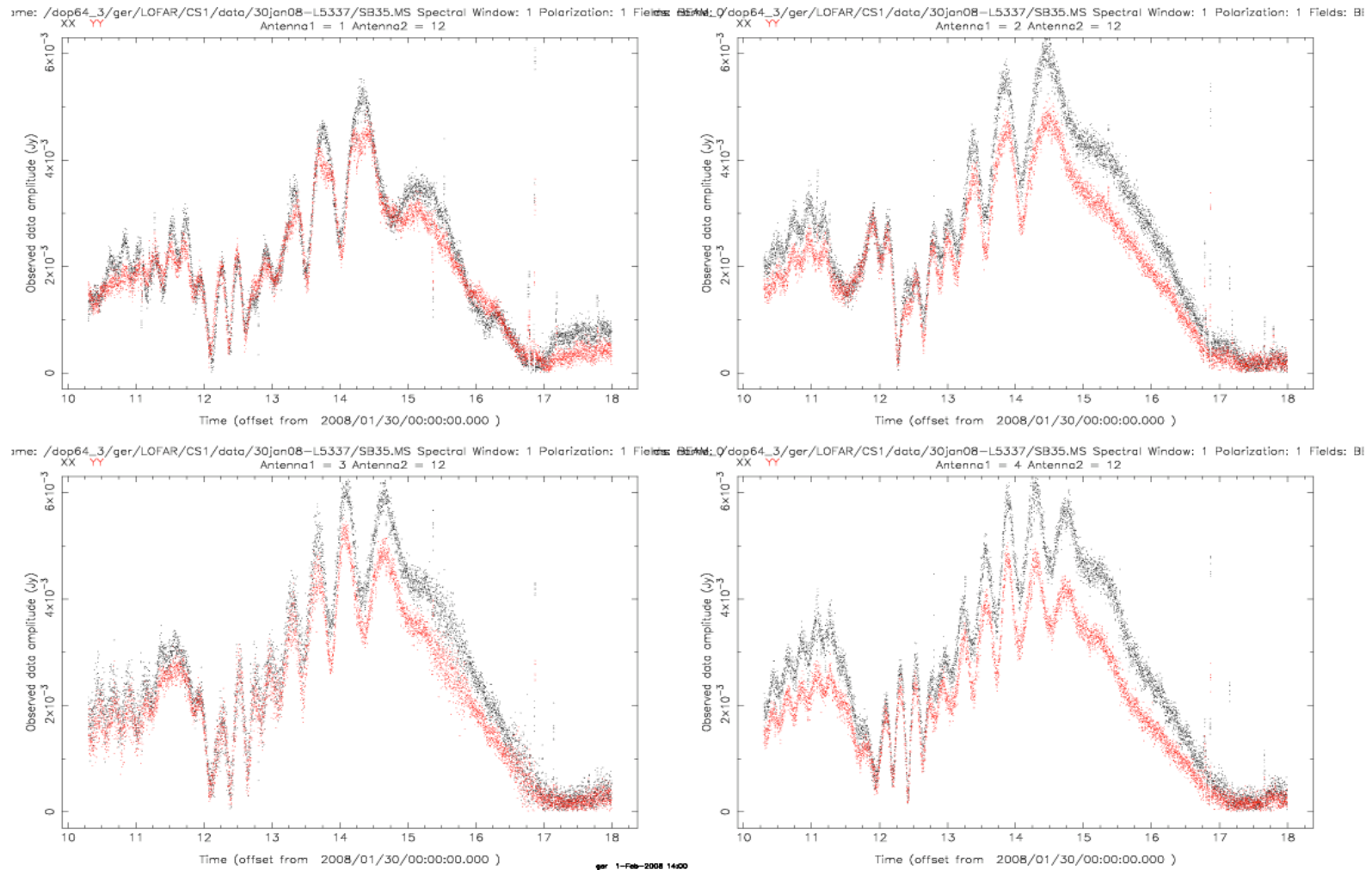
ime: /dop64_3/ger/LOFAR/CS1/data/30jan08-L5337/SB35.MS Spectral Window: 1 Polarization: 1 Fields: BI
XX YY Antenna1 = 1 Antenna2 = 12

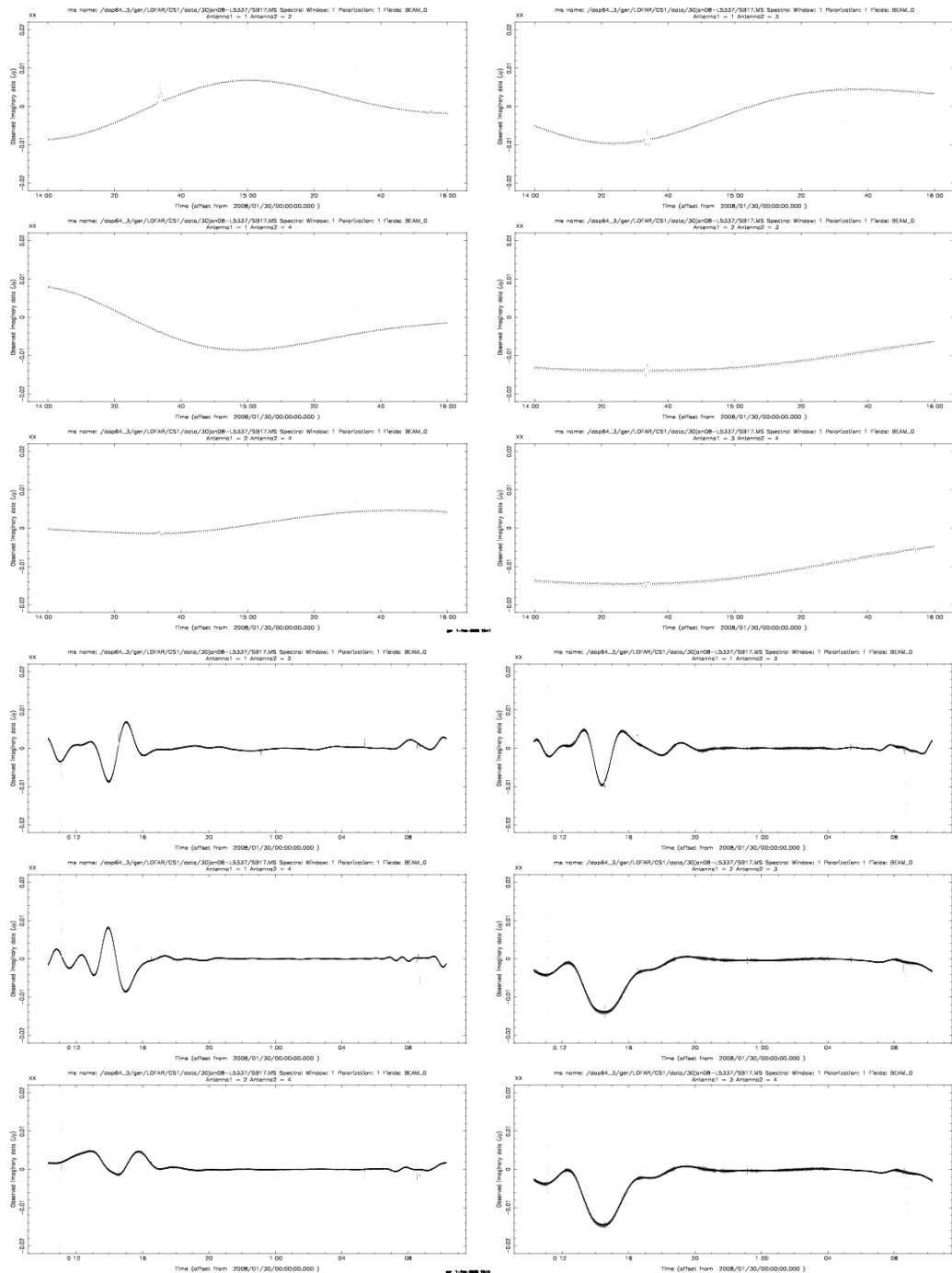


ime: /dop64_3/ger/LOFAR/CS1/data/30jan08-L5337/SB35.MS Spectral Window: 1 Polarization: 1 Fields: BI
XX YY Antenna1 = 3 Antenna2 = 12



correlations between dipole - tiles (zenith centered) (L5337, 30 jan08)





Amplitude

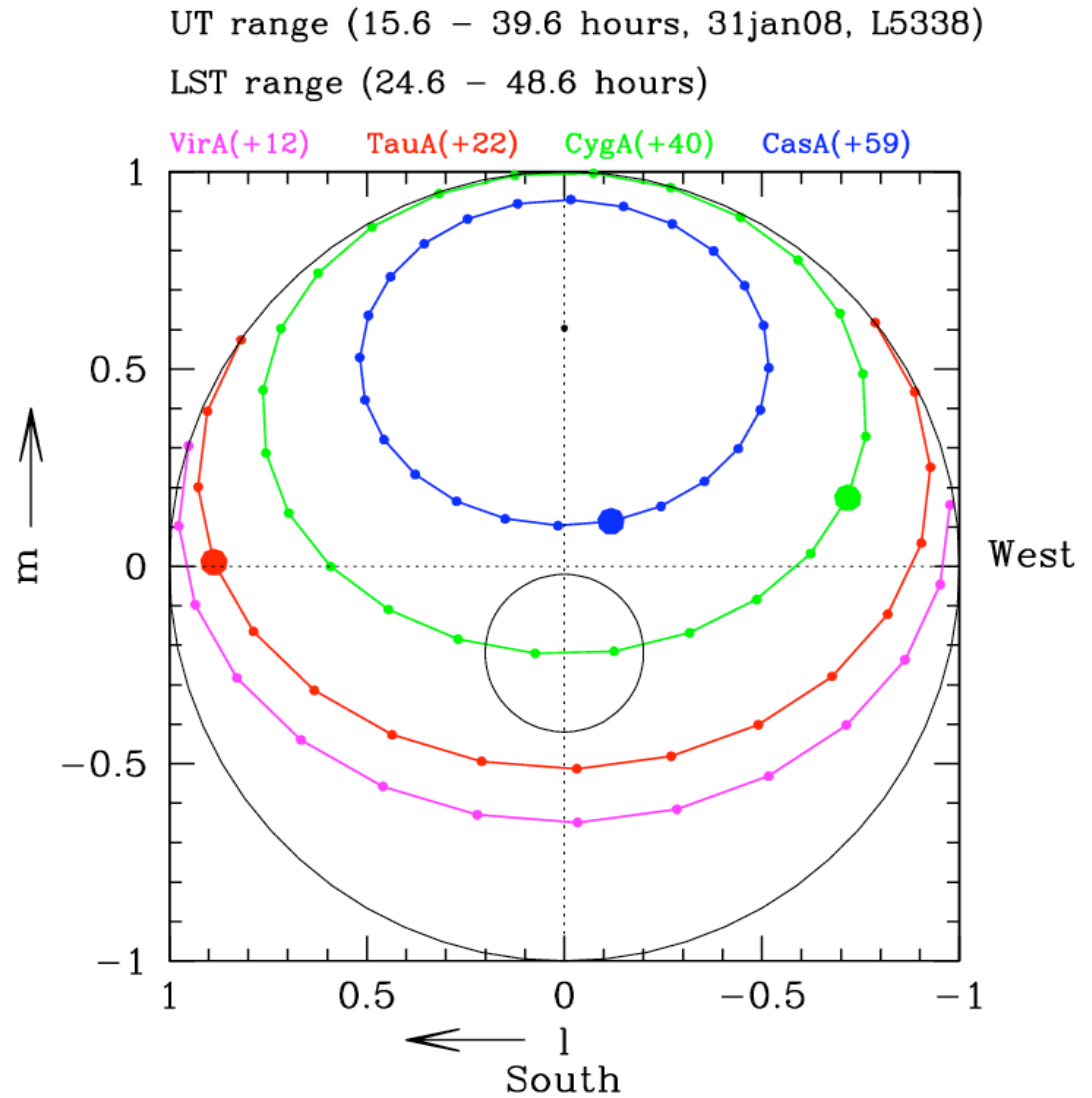
6 tile - tile correlations (L5337, 30 jan08)

Phase

Cartoon of A-team
source tracks, and all 4
tilebeamformer locations

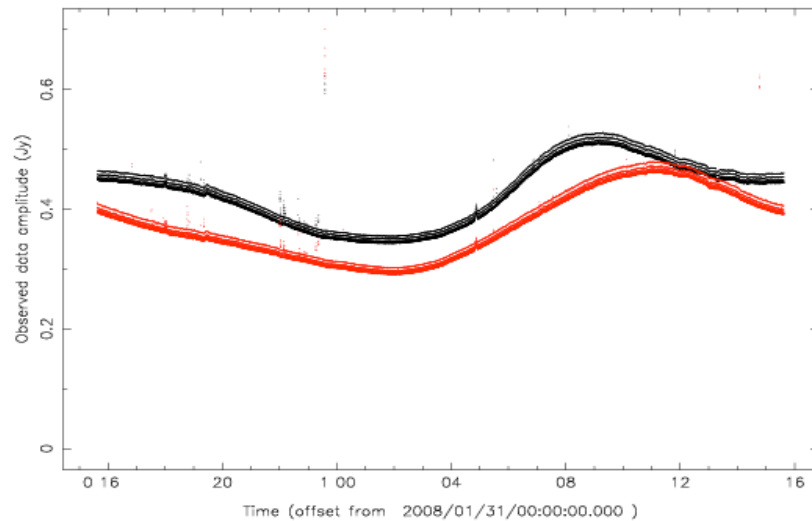
(zenith SIN projection)

for 24h observation
L5338 (31 Jan 08)

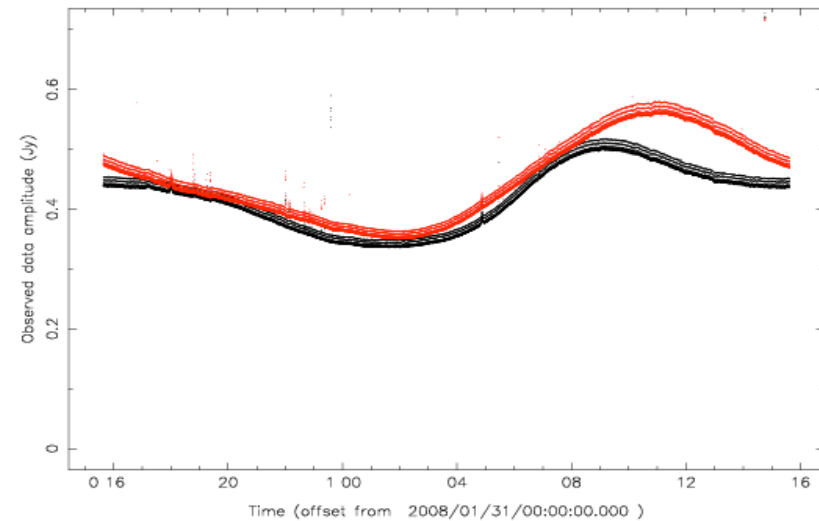


4 dipole reponses (L5338, 31 jan08, 150 MHz)

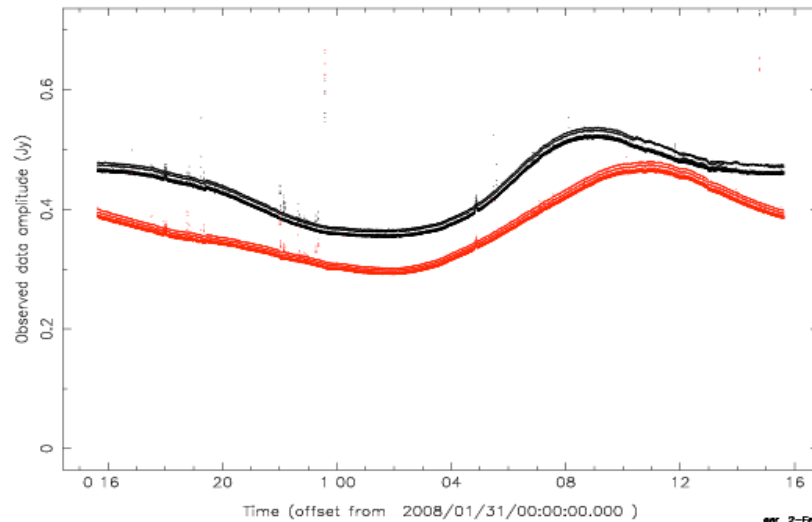
me: /dop64_3/ger/LOFAR/CS1/data/31jan08-L5338/SB17.MS Spectral Window: 1 Polarization: 1 Fields: BI
XX YY Antenna1 = 5 Antenna2 = 5



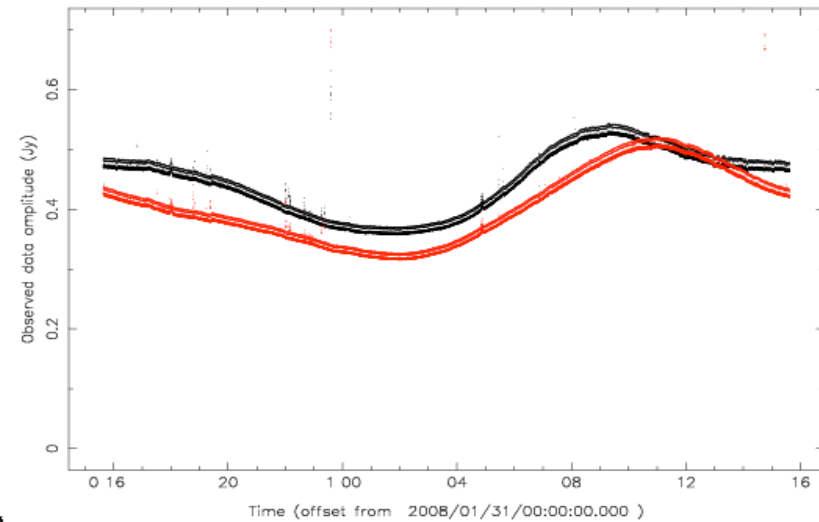
me: /dop64_3/ger/LOFAR/CS1/data/31jan08-L5338/SB17.MS Spectral Window: 1 Polarization: 1 Fields: BI
XX YY Antenna1 = 6 Antenna2 = 6



me: /dop64_3/ger/LOFAR/CS1/data/31jan08-L5338/SB17.MS Spectral Window: 1 Polarization: 1 Fields: BI
XX YY Antenna1 = 7 Antenna2 = 7

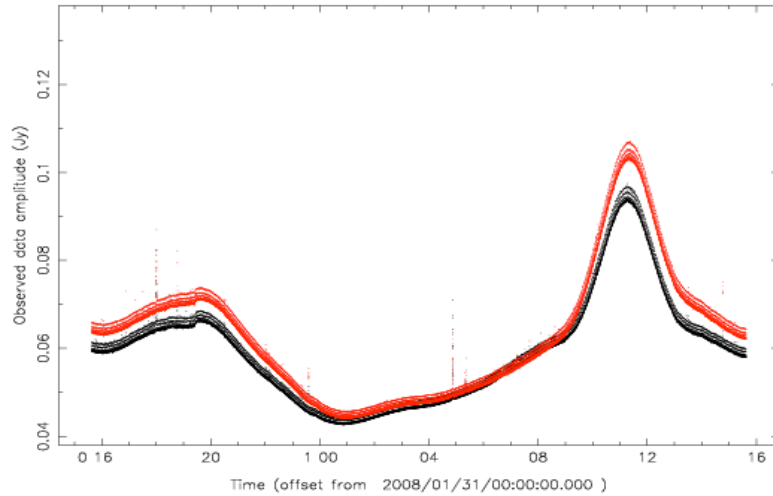


me: /dop64_3/ger/LOFAR/CS1/data/31jan08-L5338/SB17.MS Spectral Window: 1 Polarization: 1 Fields: BI
XX YY Antenna1 = 8 Antenna2 = 8

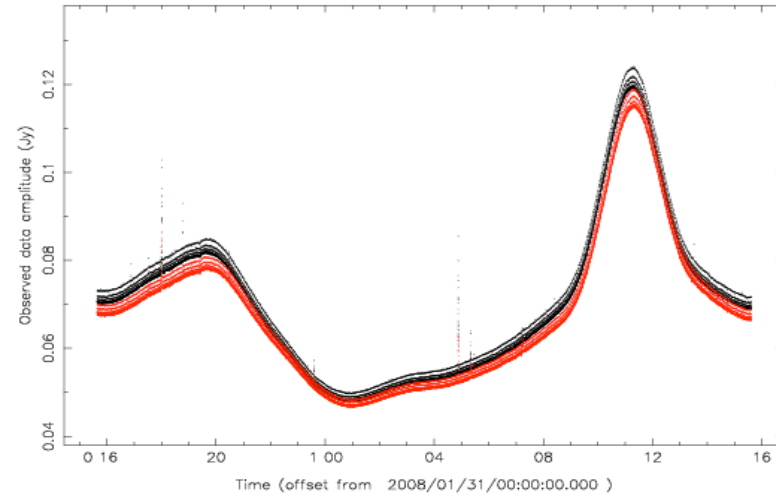


4 tile Total Power reponses to Cyg A passing (L5338, 31 jan08)

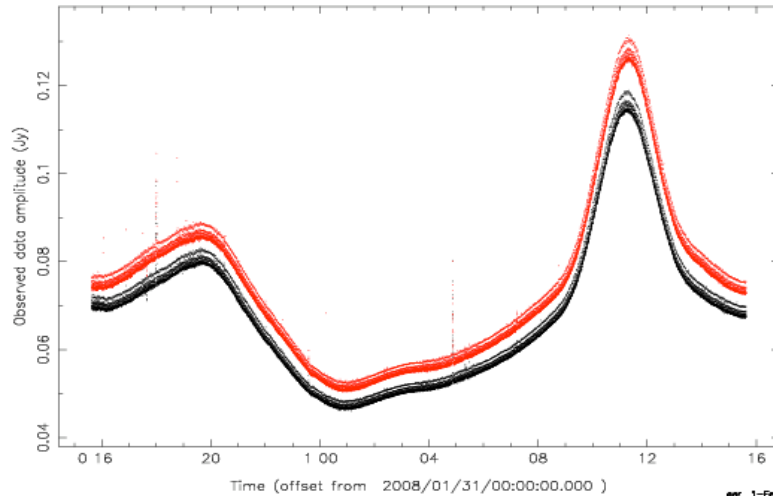
name: /dop64_3/ger/LOFAR/CS1/data/31jan08-L5338/SB17.MS Spectral Window: 1 Polarization: 1 Fields: Beam: 0
XX YY Antenna1 = 1 Antenna2 = 1



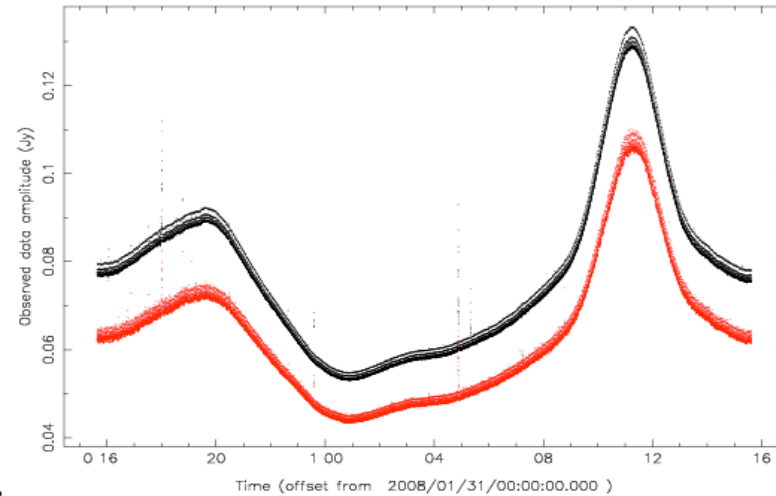
name: /dop64_3/ger/LOFAR/CS1/data/31jan08-L5338/SB17.MS Spectral Window: 1 Polarization: 1 Fields: Beam: 0
XX YY Antenna1 = 2 Antenna2 = 2



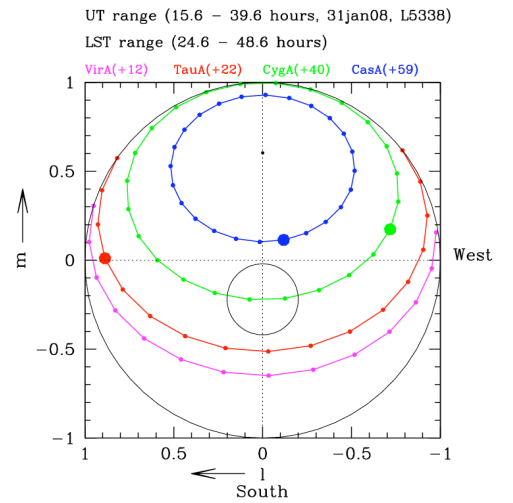
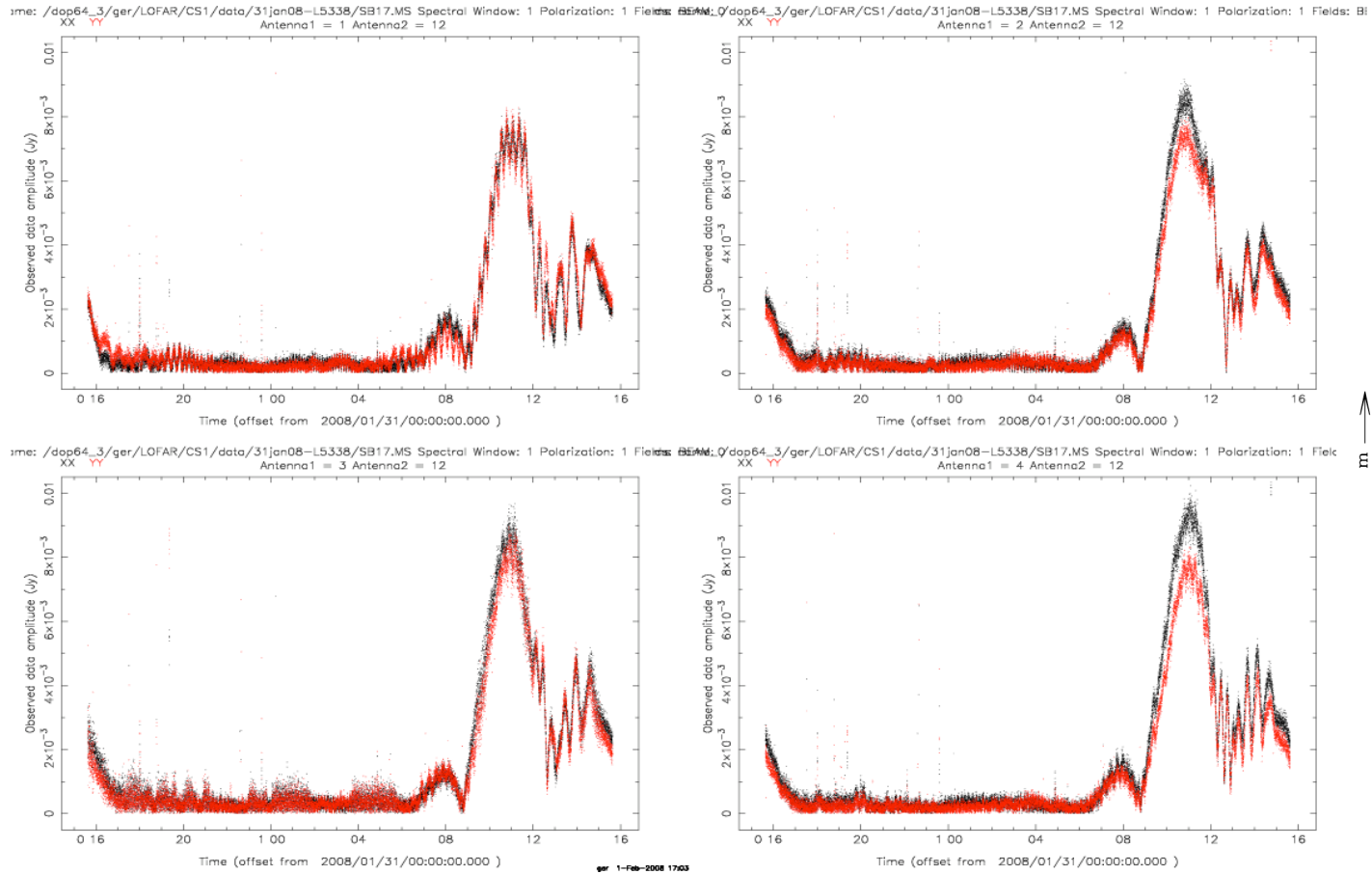
name: /dop64_3/ger/LOFAR/CS1/data/31jan08-L5338/SB17.MS Spectral Window: 1 Polarization: 1 Fields: Beam: 0
XX YY Antenna1 = 3 Antenna2 = 3



name: /dop64_3/ger/LOFAR/CS1/data/31jan08-L5338/SB17.MS Spectral Window: 1 Polarization: 1 Fields: Beam: 0
XX YY Antenna1 = 4 Antenna2 = 4



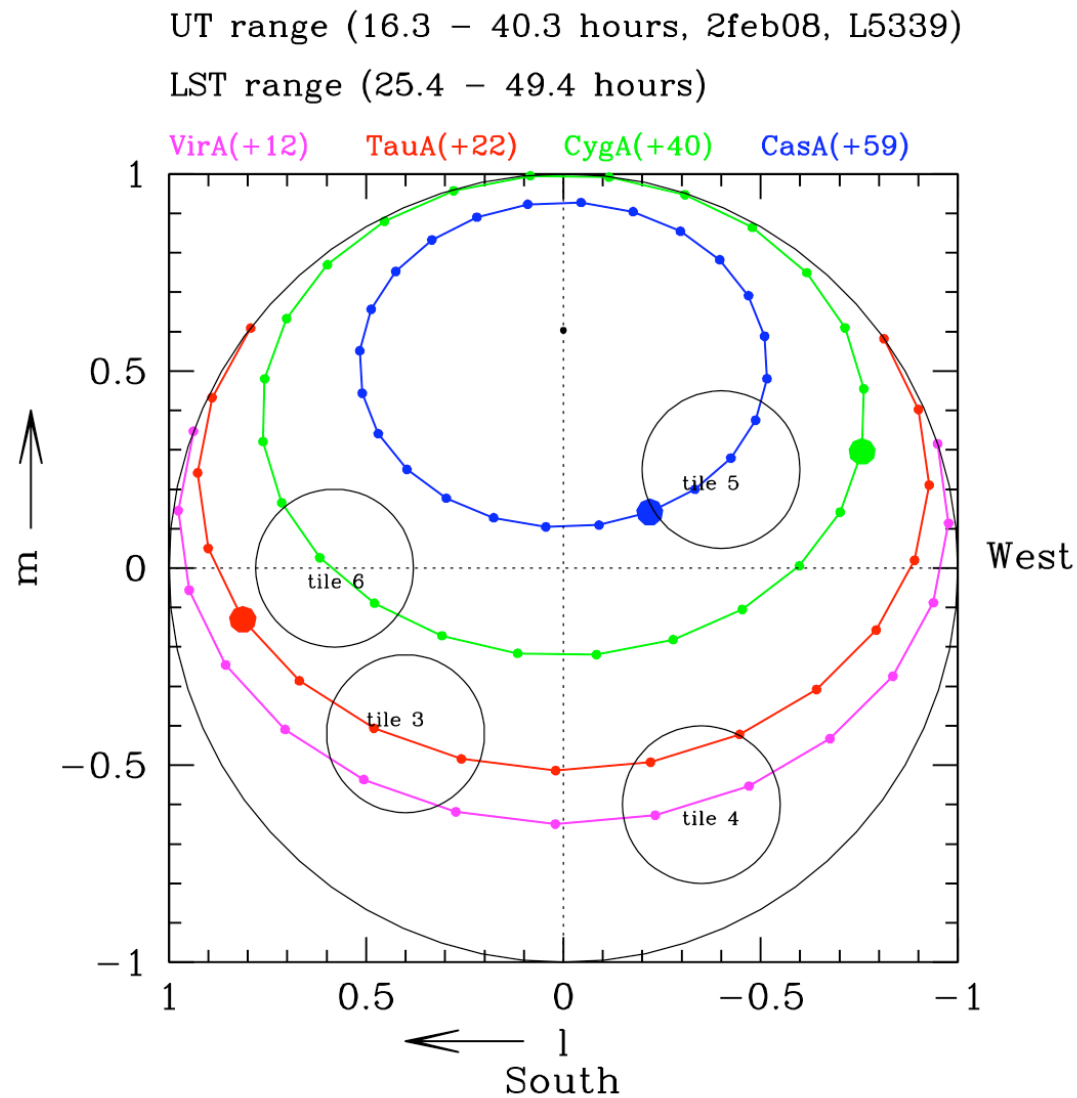
4 tile-dipole correlations to Cyg A passing (L5338, 31 jan08)



Cartoon of A-team
source tracks,
and 4 different
tilebeamformer
locations

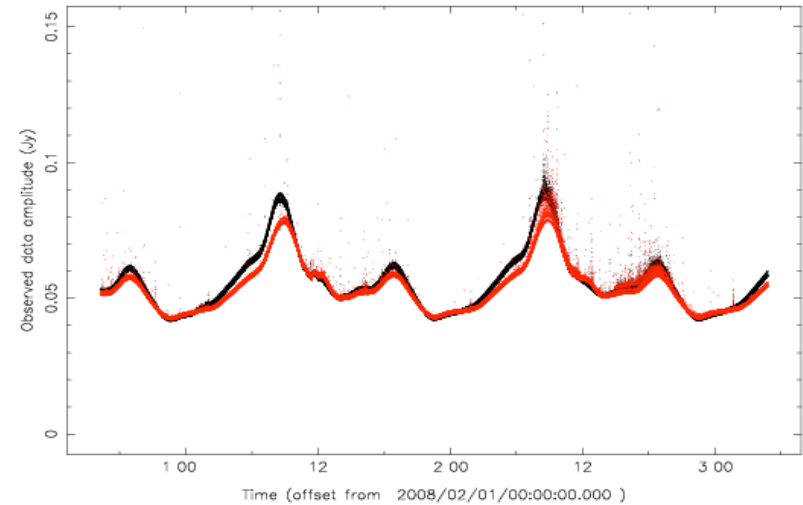
(zenith SIN projection)

for 60h observation
L5339 (1-4 Feb07)

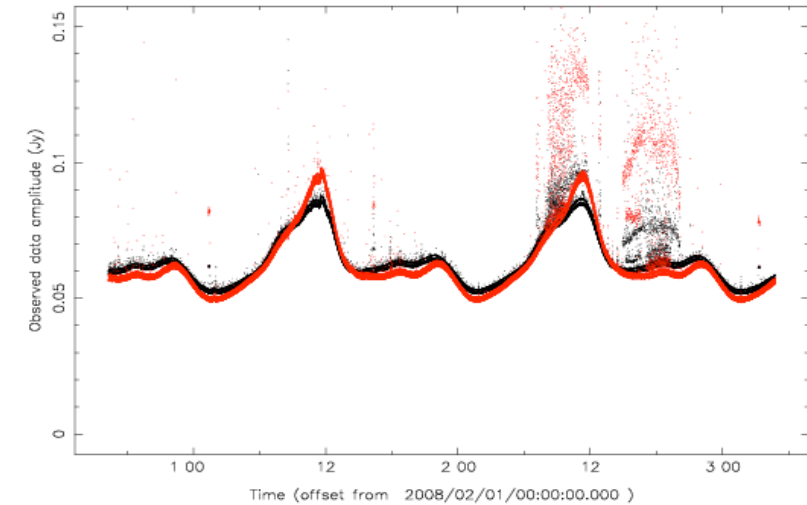


4 tile Total Power reponses to A-team passing (L5339, 1-4 Feb08)

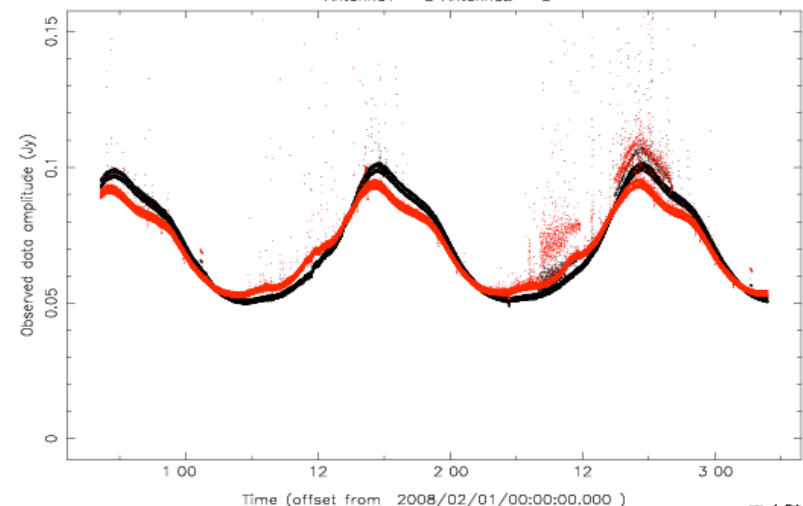
ame: /dop64_3/ger/LOFAR/CS1/data/1feb08-L5339/SB17.MS Spectral Window: 1 Polarization: 1 Fields: BE
XX YY Antenna1 = 1 Antenna2 = 1



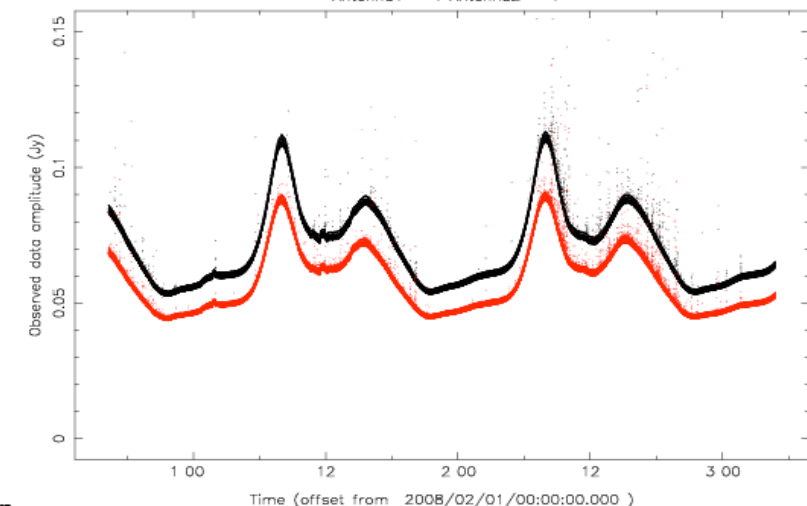
ame: /dop64_3/ger/LOFAR/CS1/data/1feb08-L5339/SB17.MS Spectral Window: 1 Polarization: 1 Fields: BE
XX YY Antenna1 = 2 Antenna2 = 2



ame: /dop64_3/ger/LOFAR/CS1/data/1feb08-L5339/SB17.MS Spectral Window: 1 Polarization: 1 Fields: BE
XX YY Antenna1 = 3 Antenna2 = 3

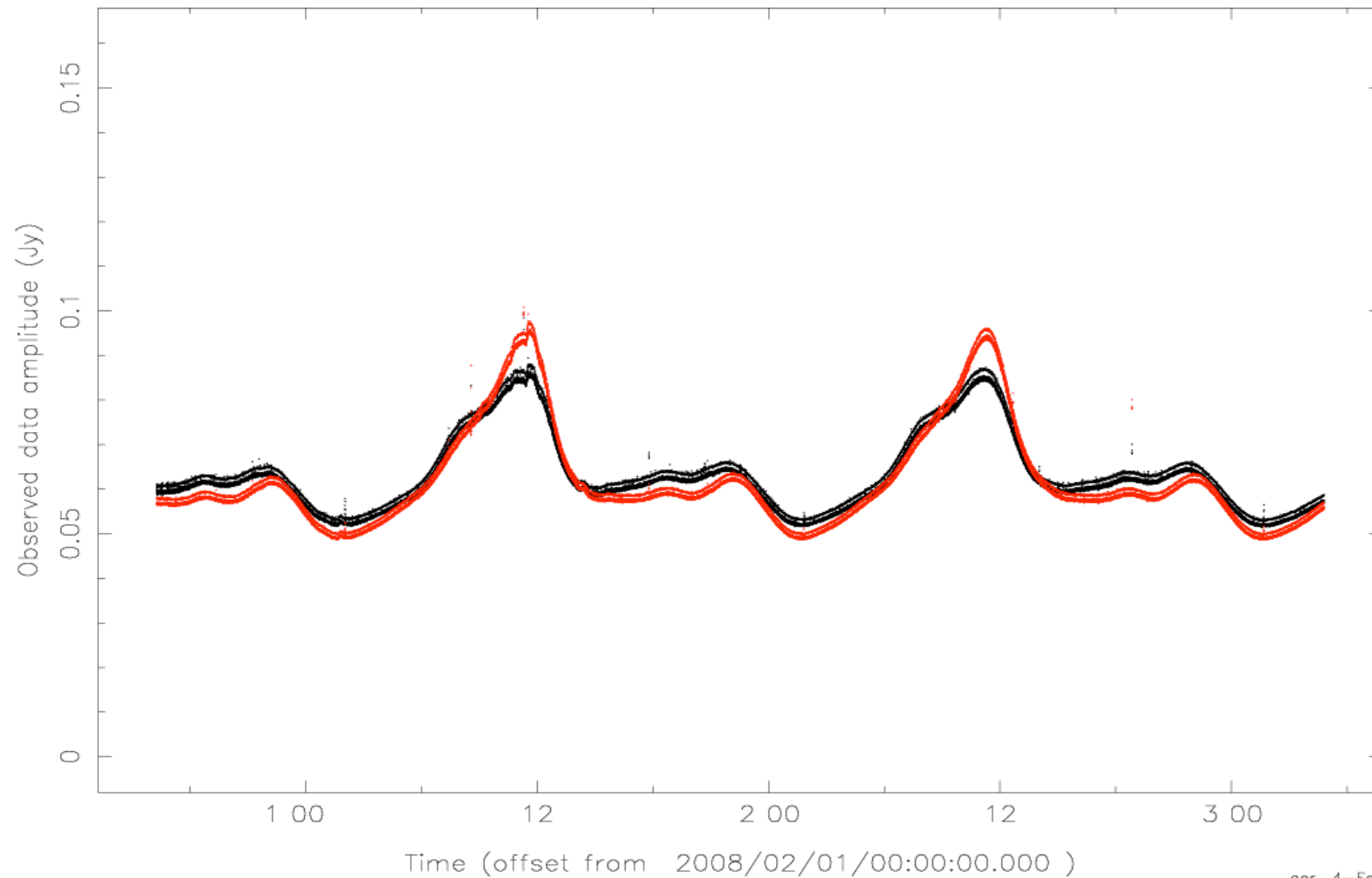


ame: /dop64_3/ger/LOFAR/CS1/data/1feb08-L5339/SB17.MS Spectral Window: 1 Polarization: 1 Fields: BE
XX YY Antenna1 = 4 Antenna2 = 4

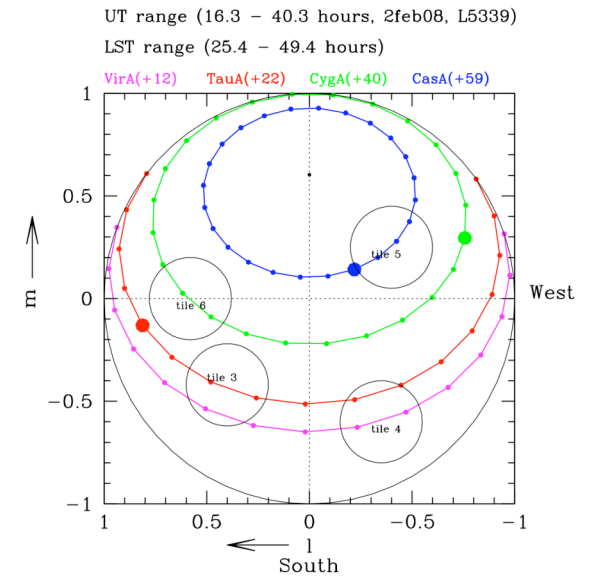
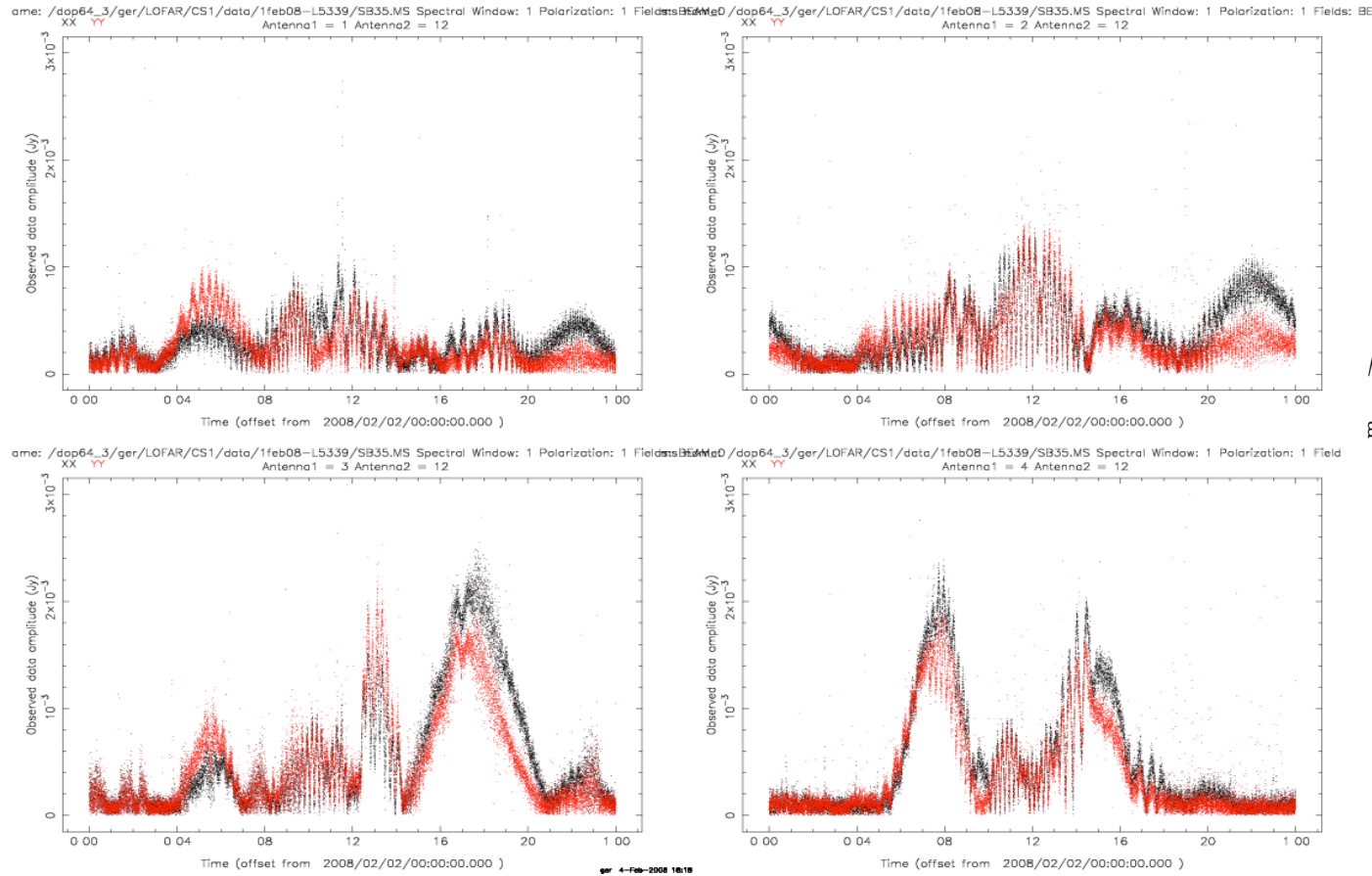


tile 4 TP responses to A-team passing (L5339, 1-4 Feb08)

ame: /dop64_3/ger/LOFAR/CS1/data/1feb08-L5339/SB17.MS Spectral Window: 1 Polarization: 1 Fields: BE
XX YY
Antenna1 = 2 Antenna2 = 2



1 dipole - 4 tiles visibilities (Tau, Vir, Cas, Cyg) (L5339, 1-4 Feb08, only 24h shown)



Smaller rain effects on HBA tiles (Saturday 2Feb08, L5339)

name: /dop64_3/ger/LOFAR/CS1/data/1feb08-L5339/SB1.MS Spectral Window: 1 Polarization: 1 Fields: BE/
XX YY
Antenna1 = 5 Antenna2 = 5

