

# ASTRON



# LOFAR

Netherlands Institute for Radio Astronomy



ROLLOUT STATUS & PLANNING

LOFAR STATUS MEETING

April 1, 2009

- Tender process completed
  - CEP components LCU, Offline Processing cluster and Storage cluster, for phase 1, are granted
    - 5 Tflops and 0.5 PB
  - LCU components already delivered
  - Offline Processing and Storage components will be delivered within 2 months
  - Phase 2 procurement has to be initiated before the end of this year

# LOFAR PROCUREMENT (1)



- BATCH #1 components production (18 stations) delivered except HBA
  - HBA final assembly started in November 2008
    - Difficult start-up due to learning process and Tyco cable/connector issues
  - At present HBA tiles for 7 Remote Stations and 1 Core Station are delivered
  - Current HBA production rate is 48 tiles/week (1 station/week)
- BATCH #2 production ongoing
- No major component production problems at the moment
  - Tyco cable/connector issues solved
- Energy- and 'last mile' fiber network connection for remote stations is a time consuming process

## ISSUES

- **THE WEATHER causing delays.....**

401



LOFAR

ASTRON





# RS302 STATUS LAST WEEK





## **ISSUES**

- **STORAGE OF THE DELIVERED COMPONENTS ESPECIALLY THE HBA TILES**



E



# Storage of completed hba tiles



LOFAR

ASTRON



# Storage at place Luuk vd Laan



## ▪ MITIGATION ACTIONS

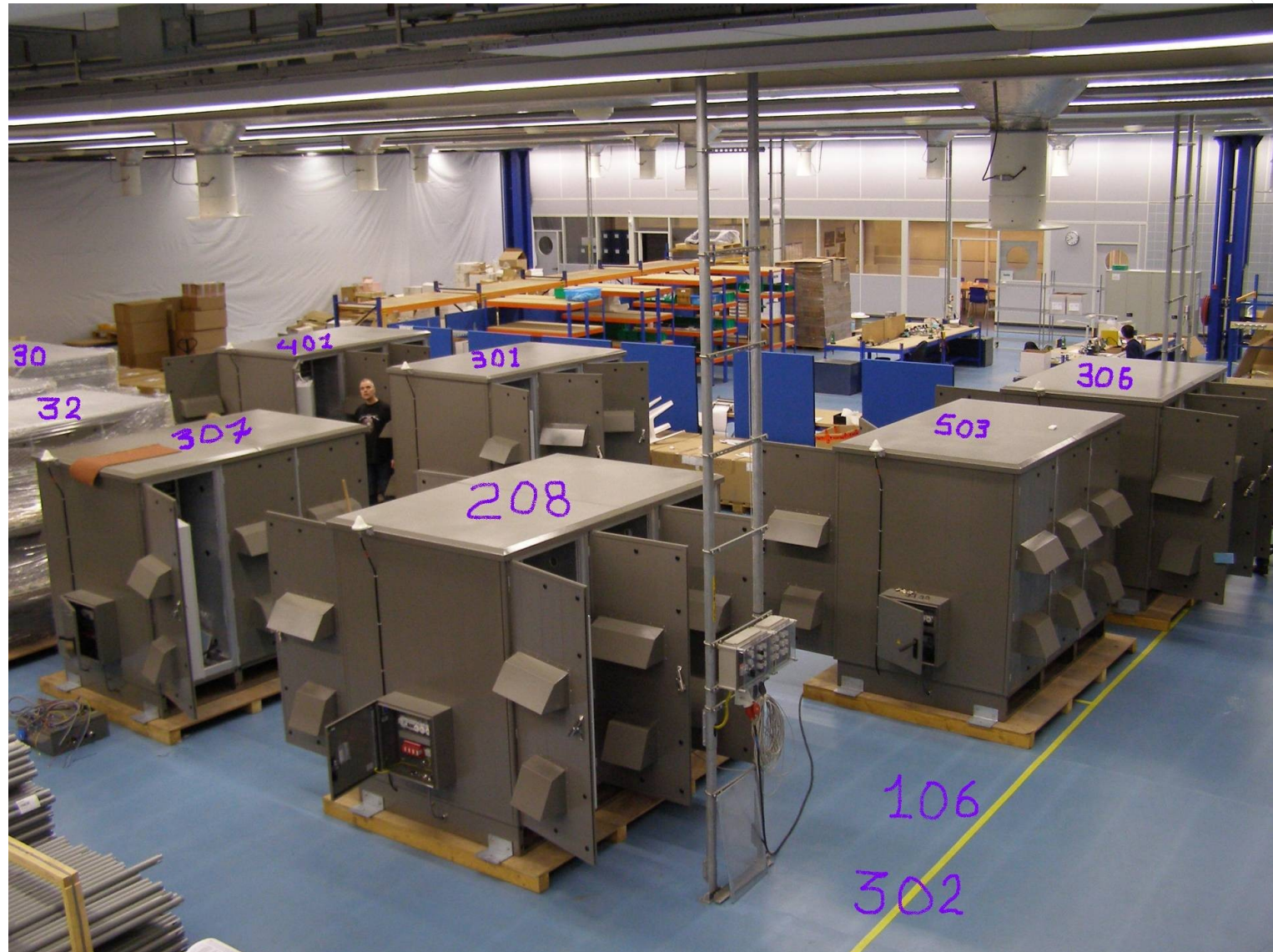
- Full cabinet integration, test and validation at Excel Assemblies (Emmen) instead of on the field
- Transport and installation of fully integrated & tested cabinets as soon as cabinet infrastructure platform is available (decoupled from the HAK activity i.e. ASTRON/LOFAR responsibility)
- Distributed storage locations
  - Stadskanaal (HBA tiles)
  - 2e Exloermond (HBA tiles)
  - LOFAR farm at Central Core Location (HBA tiles)
  - Excel Assemblies at Emmen (all components except HBA tiles)
- AD HOC PLANNING







# Excel cabinets





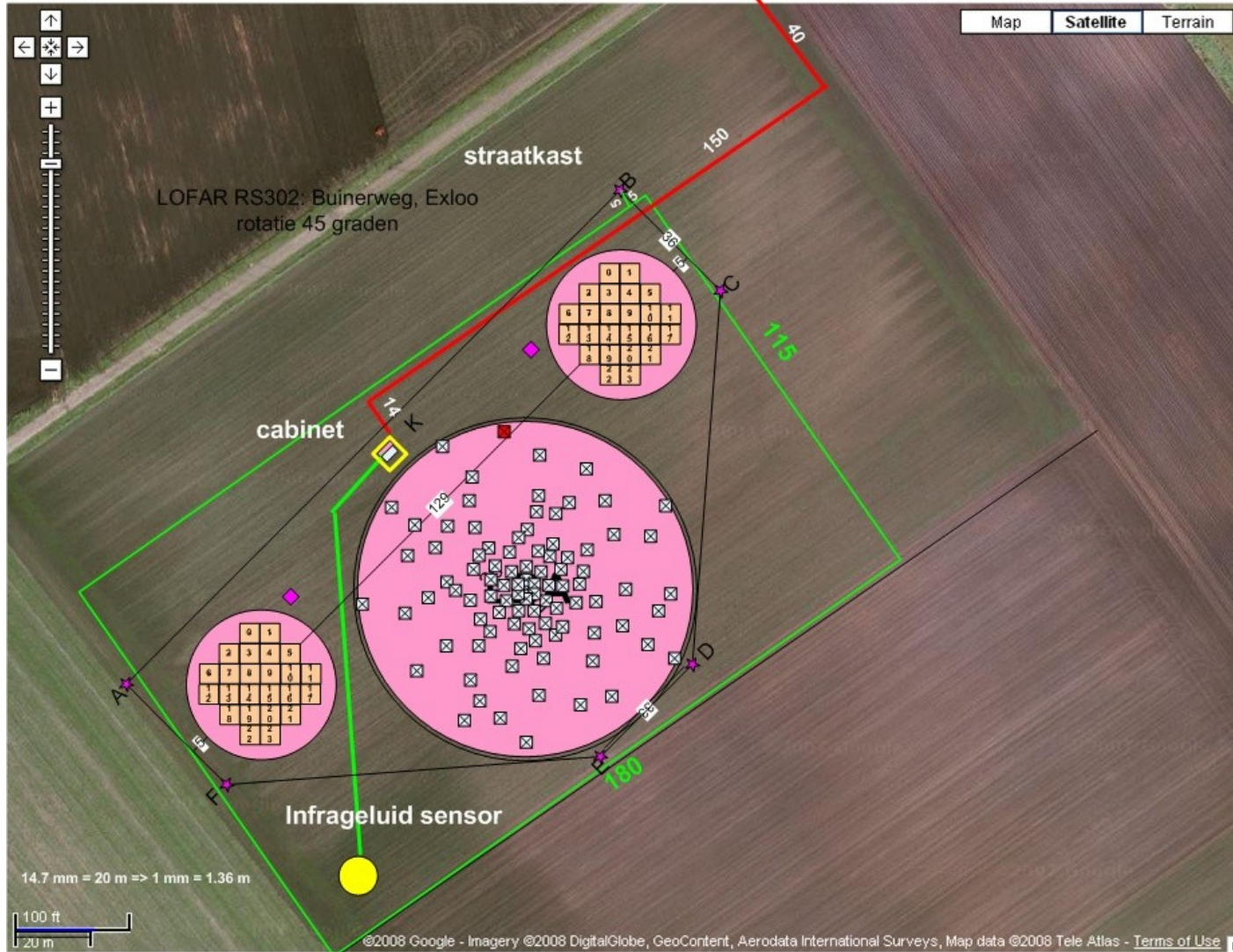
# ROLLOUT STATIONS



- THE WEATHER CONDITIONS ARE SUCH THAT FIRST STATION FIELD INTEGRATION ACTIVITIES HAS BEEN STARTED
- CABLE INSTALLATIONS THIS WEEK
- HBA & LBA INSTALLATION NEXT WEEK
- SYSTEM TESTING 2 WEEKS LATER
- HANDOVER 302 ...

# LOFAR station 302 Buinerweg

X (253412,547201)













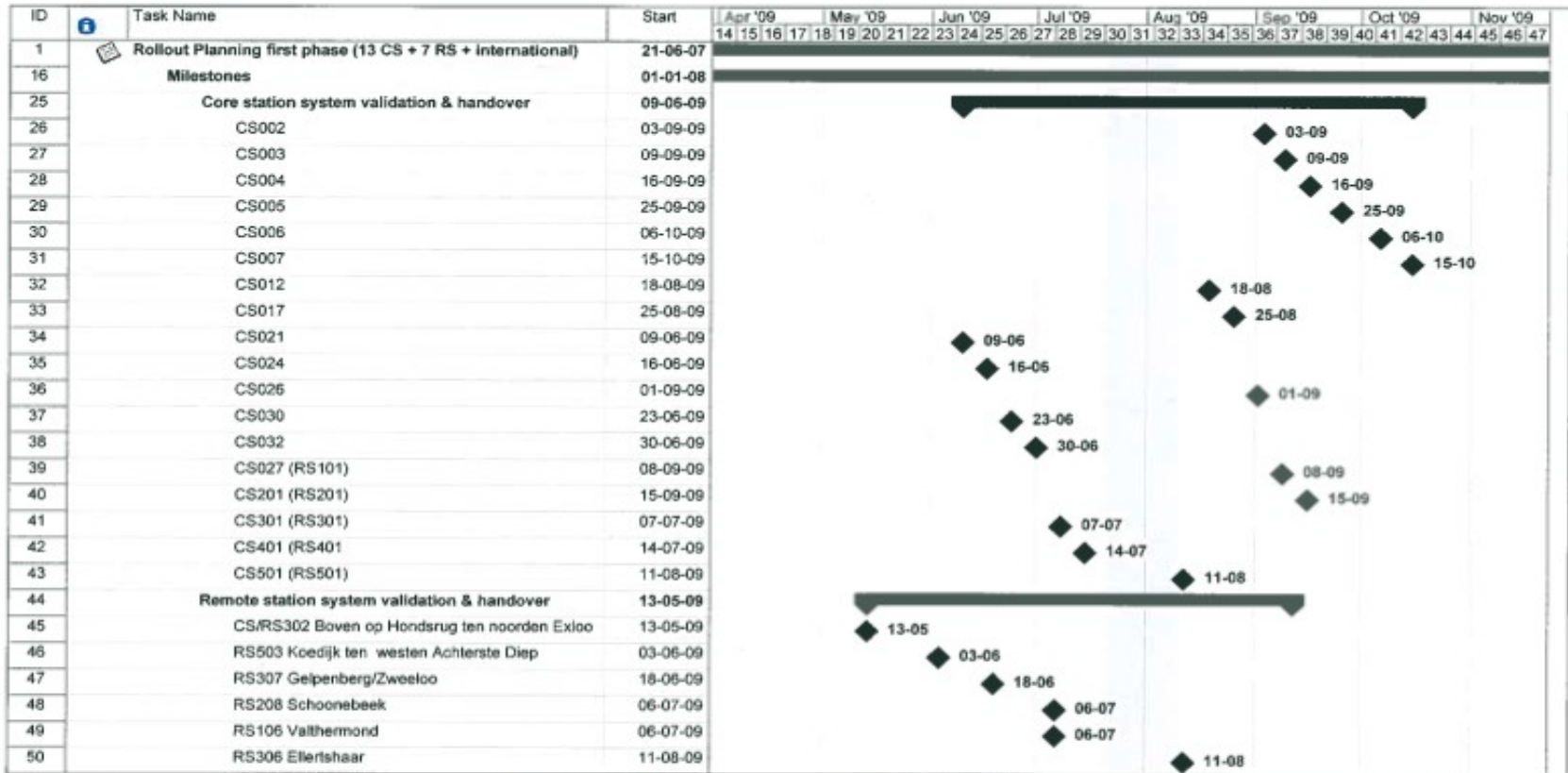




# ROLLOUT STATIONS



# PLANNING V2.15



Project: RO-sched phase1 v 2.14b.mp Date: 27-03-09	Task		Rolled Up Task		External Tasks	
	Critical Task		Rolled Up Critical Task		Project Summary	
	Progress		Rolled Up Milestone		Group By Summary	
	Milestone		Rolled Up Progress		Deadline	
	Summary		Split			



# PLANNING V2.15



LOFAR

ASTRON

ID	Task Name	Start	Apr '09		May '09		Jun '09		Jul '09		Aug '09		Sep '09		Oct '09		Nov '09																			
			14	15	16	17	18	19	20	21	22	23	24	25	26	27	28	29	30	31	32	33	34	35	36	37	38	39	40	41	42	43	44	45	46	47
79	Infrasound	01-01-08	[Task bar spanning from start of Apr '09 to end of Sep '09]																																	
80	Westerbork(infrasound)	16-01-08	[Task bar spanning from start of Apr '09 to end of Sep '09]																																	
81	Dwingelo(infrasound)	16-01-08	[Task bar spanning from start of Apr '09 to end of Sep '09]																																	
82	ITS veld (normale infrasound)	01-01-08	[Task bar spanning from start of Apr '09 to end of Sep '09]																																	
83	Hoogfrequent veld ITS (apart project)	01-01-08	[Task bar spanning from start of Apr '09 to end of Sep '09]																																	
84	RS503 Koedijk ten westen Achterste Diep	03-06-09	[Task bar with diamond marker at 03-06-09]																																	
85	RS302 Boven op Hondsrug ten noorden Exloc	13-05-09	[Task bar with diamond marker at 13-05-09]																																	
86	RS104 Tweederdeweg zuid Nieuw-Buinen	11-09-09	[Task bar with diamond marker at 11-09-09]																																	

Project: RO-sched phase1 v 2.14b.mp Date: 27-03-09	Task		Rolled Up Task		External Tasks	
	Critical Task		Rolled Up Critical Task		Project Summary	
	Progress		Rolled Up Milestone		Group By Summary	
	Milestone		Rolled Up Progress		Deadline	
	Summary		Split			