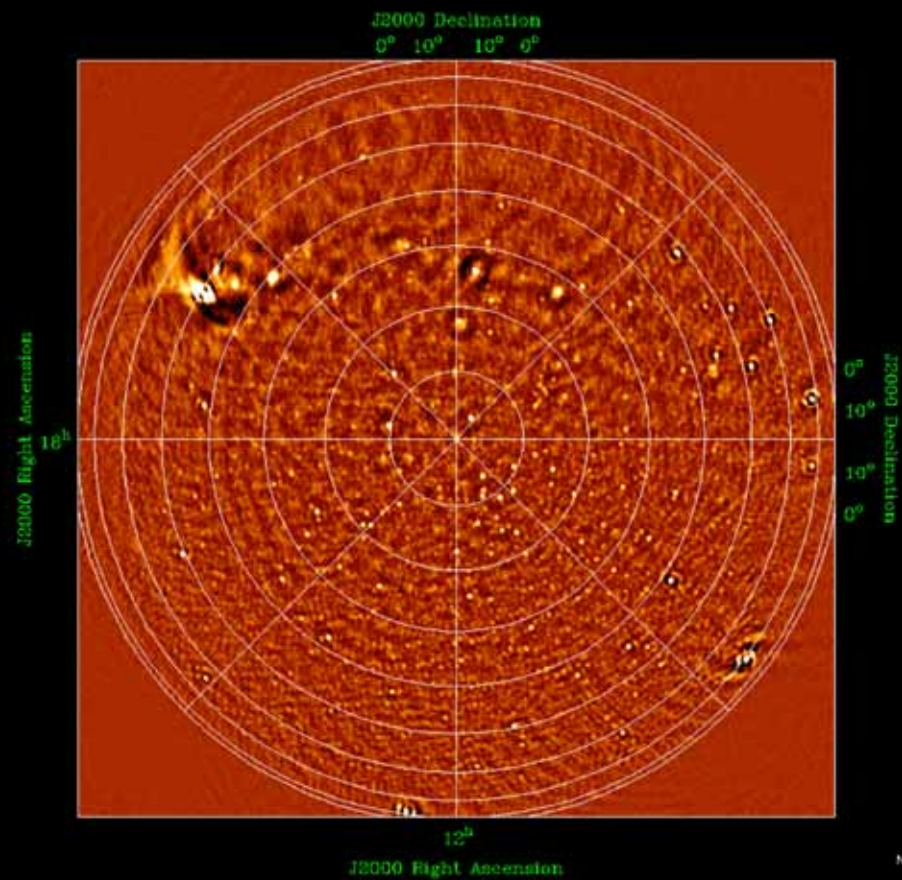


LOFAR Roll Out Update

André W. Gunst













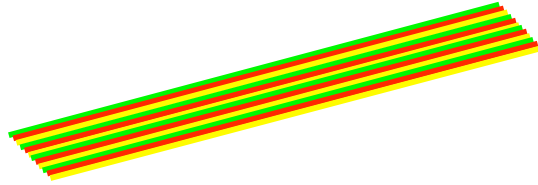




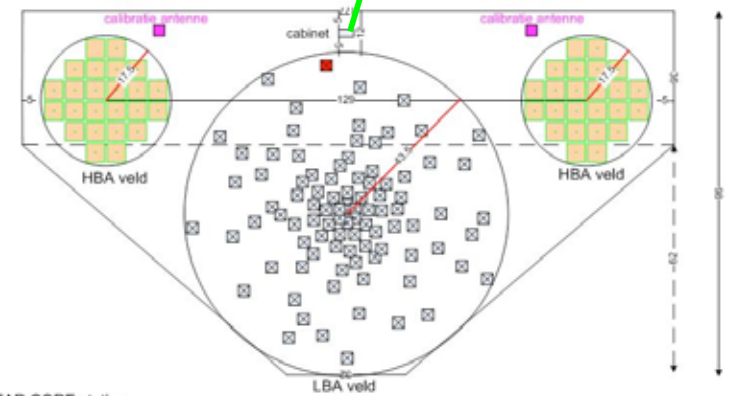


CIT

OCN

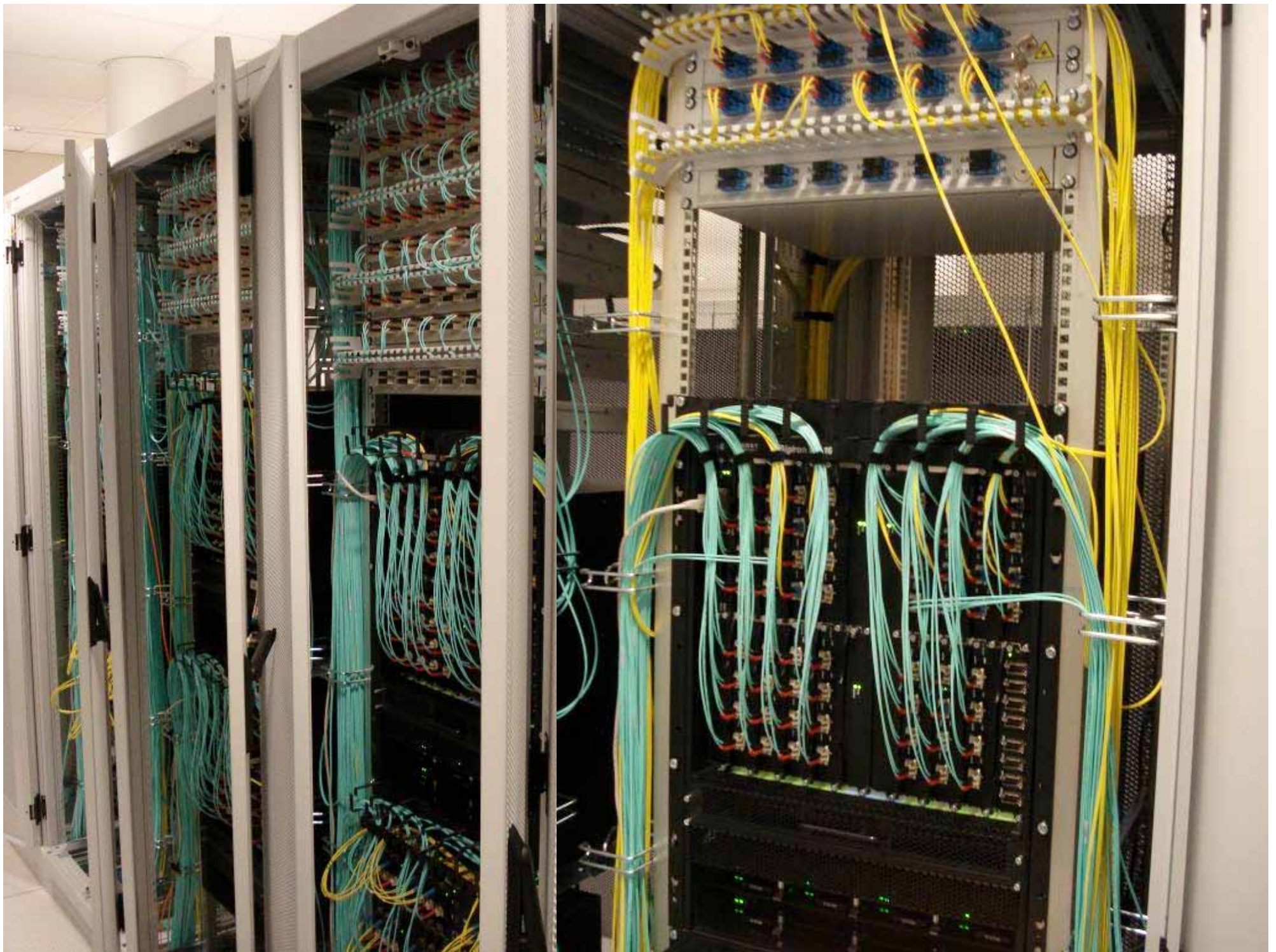


CN









lofartest@CS302C:~

```
.....  
.....  
TBBBandSel .....
```

```
.....  
.....  
DIAGBypassSettings .....
```

```
.....  
.....  
RawDataBlock(write) .....
```

```
RawDataBlock(read) .....
```

```
SerdesWrite .....
```

```
SerdesRead .....
```

```
[lofartest@CS302C ~]$ rspctl --version
```

```
090415 084803,103 [23584] TRACE TRC [:] - TRACE module activated
```

```
log4cplus:ERROR Unable to open file: ../log/rspctl.log
```

```
log4cplus:ERROR Unable to open file: ../log/rspctl.log
```

```
RSP[ 0] RSP version = 5, BP version = 5.3, AP version = 5.3
```

```
RSP[ 1] RSP version = 5, BP version = 5.3, AP version = 5.3
```

```
RSP[ 2] RSP version = 5, BP version = 5.3, AP version = 5.3
```

```
RSP[ 3] RSP version = 5, BP version = 5.3, AP version = 5.3
```

```
RSP[ 4] RSP version = 5, BP version = 5.3, AP version = 5.3
```

```
RSP[ 5] RSP version = 5, BP version = 5.3, AP version = 5.3
```

```
RSP[ 6] RSP version = 5, BP version = 5.3, AP version = 5.3
```

```
RSP[ 7] RSP version = 5, BP version = 5.3, AP version = 5.3
```

```
RSP[ 8] RSP version = 5, BP version = 5.3, AP version = 5.3
```

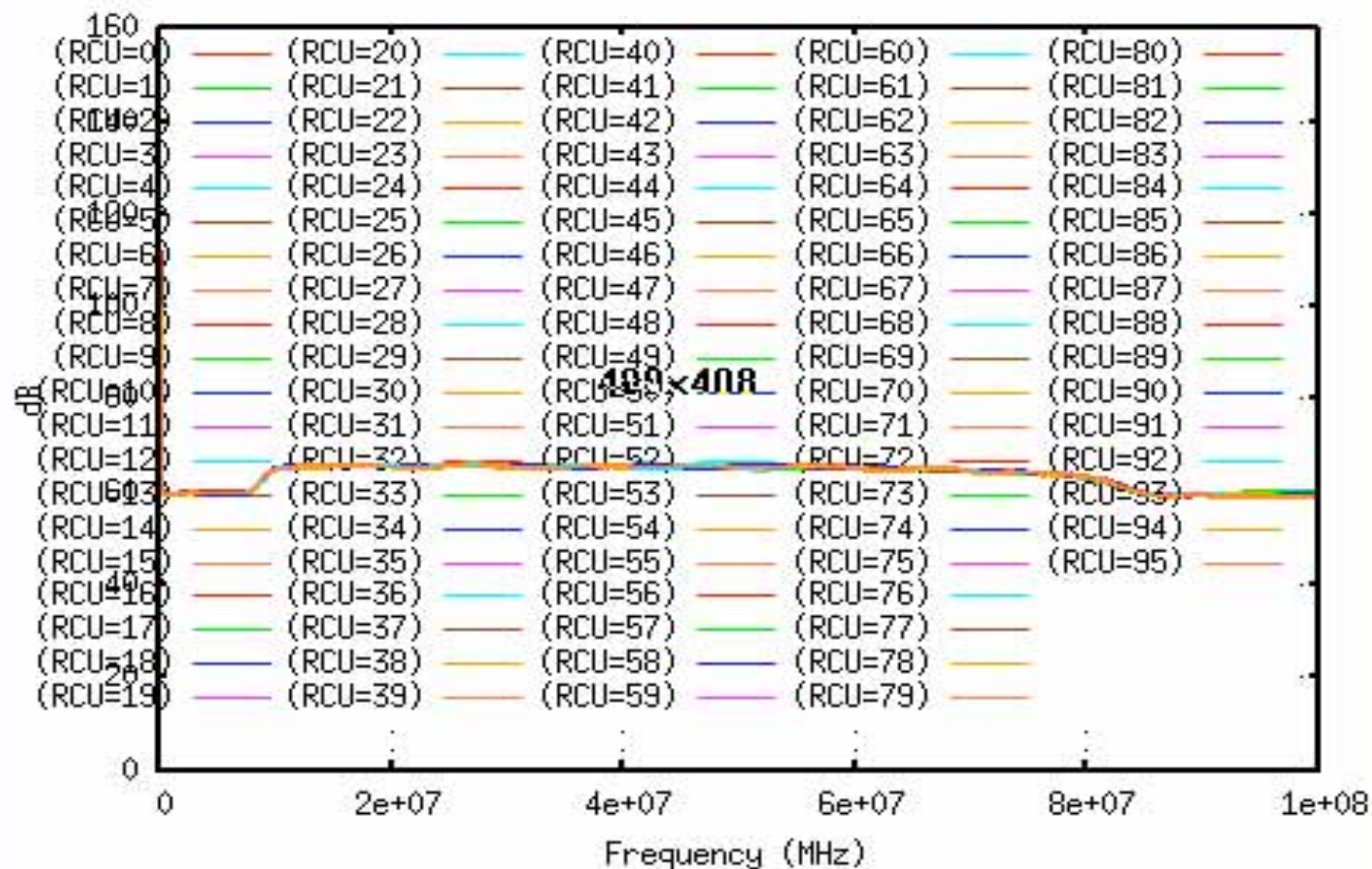
```
RSP[ 9] RSP version = 5, BP version = 5.3, AP version = 5.3
```

```
RSP[10] RSP version = 5, BP version = 5.3, AP version = 5.3
```

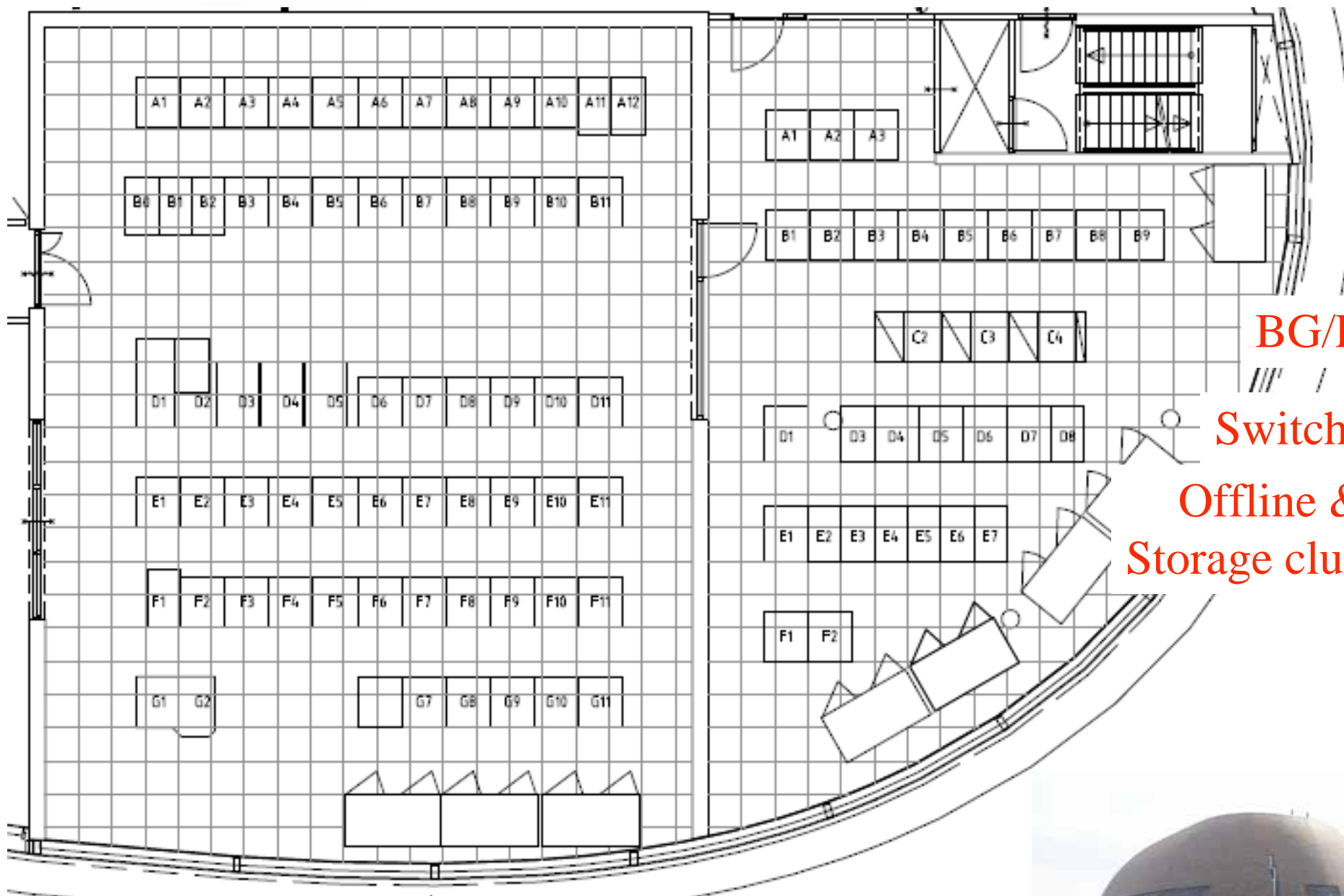
```
RSP[11] RSP version = 5, BP version = 5.3, AP version = 5.3
```

```
[lofartest@CS302C ~]$
```

1239785342 - Wed, 15 Apr 2009 08:49:02 +0000



1.07071e+08, -17.2246



BG/P

Switches

Offline &
Storage clusters

Object: LOFAR
 Adres: Nettelbosje 1, Groningen

facilitairbedrijf

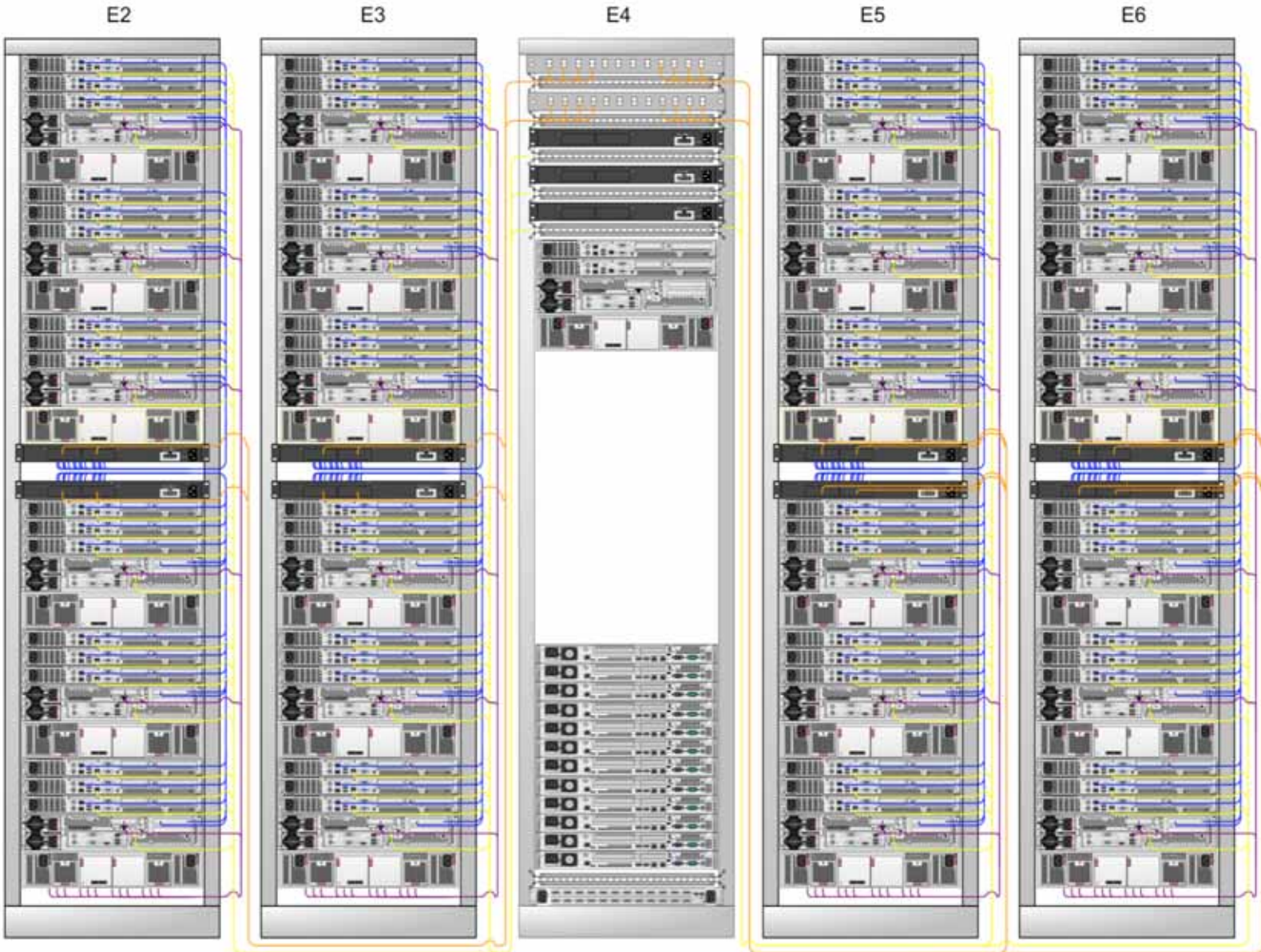
Dienstverlenende
 Eindhoven 182 — 2000 207 — Gouda 182

Objectdeel: rekenhal Zernike
 Betreft: opstellingstekening
 Soort tek:
 Omschrijving:



- 72 offline nodes
- 24 storage nodes
- 8 data switches
- 2 Front End nodes

LOFAR Phase 1 cluster Rear view



Legend

- 10GbE Uplink
- 1 GbE Data line (from Blue Gene)
- 1 GbE offline data link
- Management network