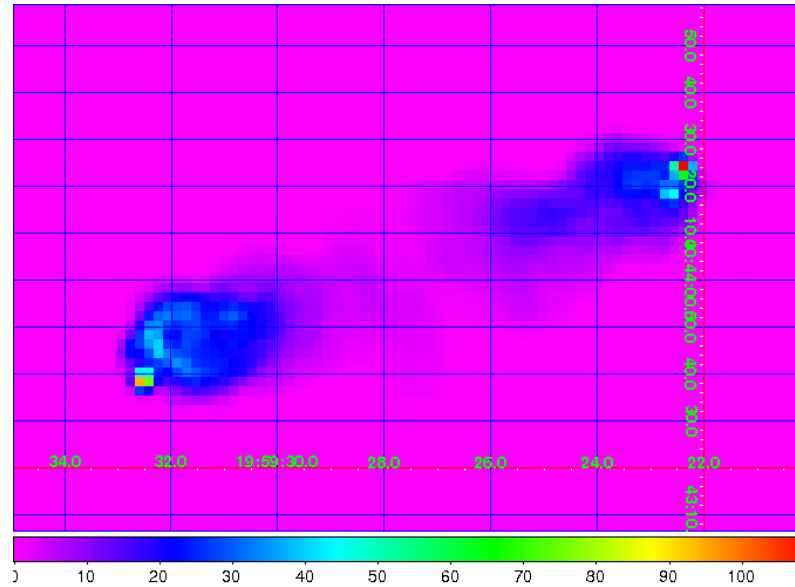


First LBA/HBA images of CygA

Sarod Yatawatta

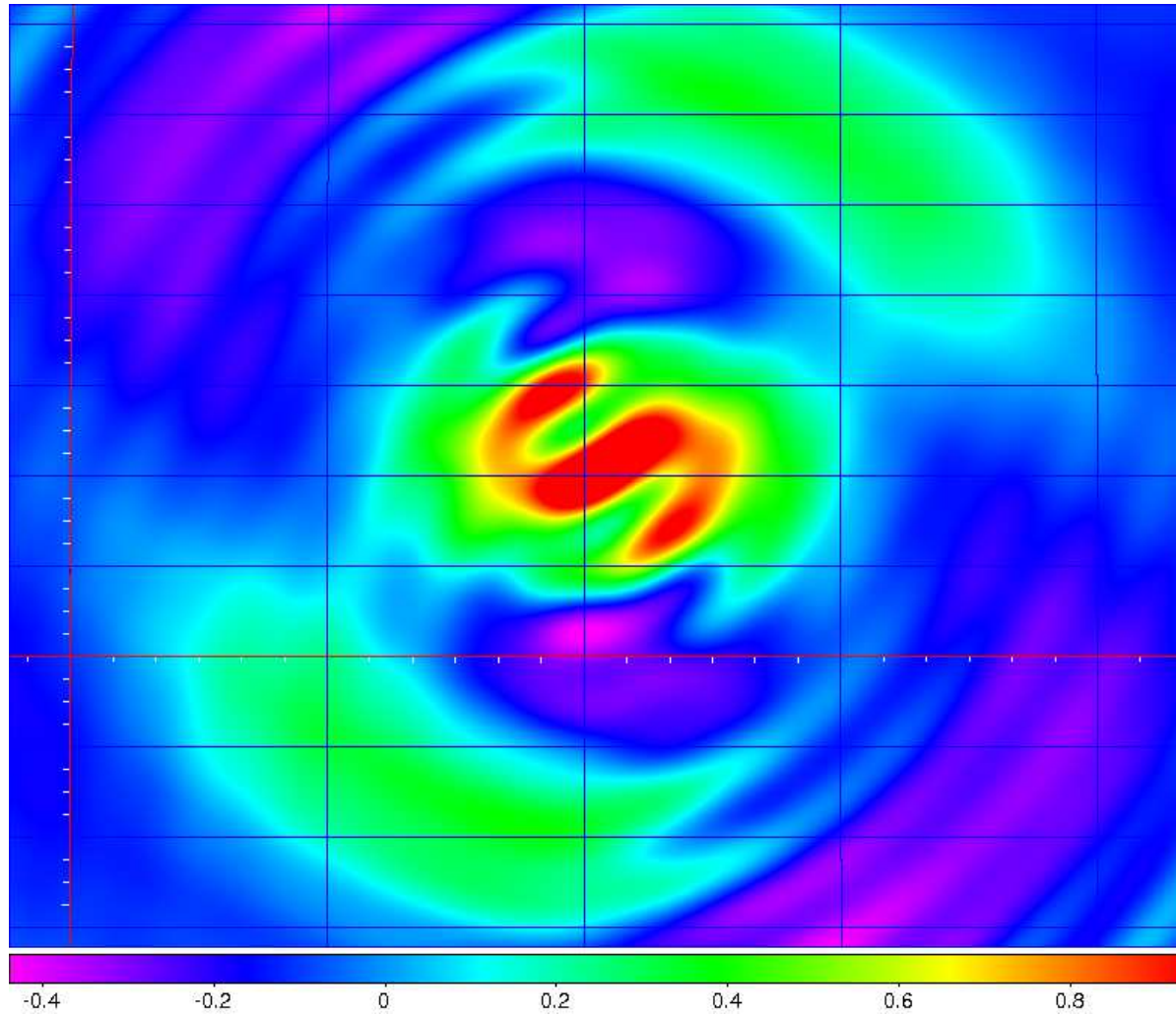
Summary



CygA at 2 arcsec resolution

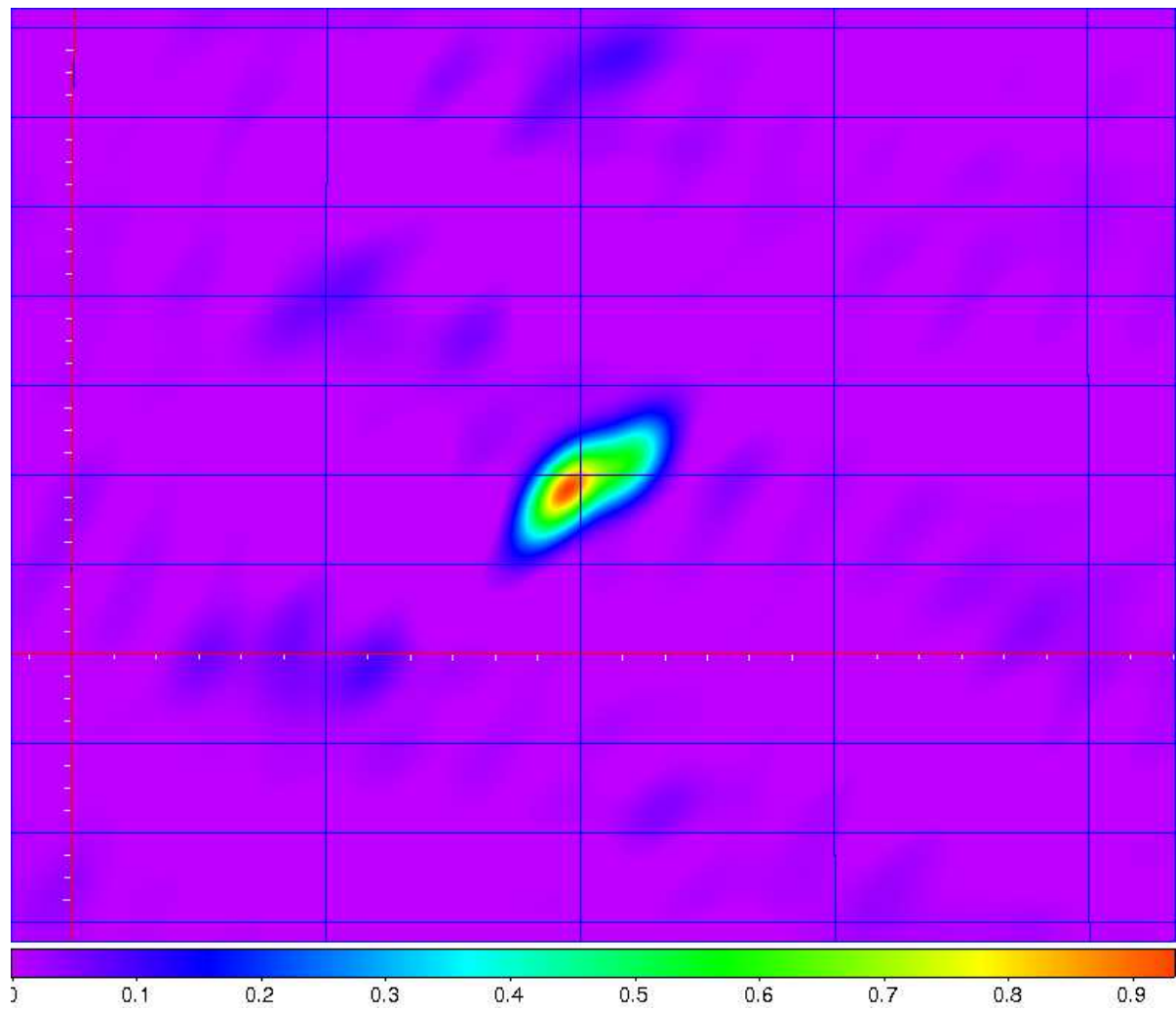
- Source model: multiple shapelet model, derived from VLA 327 MHz image.
- Model predictions match observed visibility amplitudes fairly well (30 MHz to 170 MHz).
- Calibration for G Jones using a nominal beam model.
- Image, and clean deconvolution.

LBA



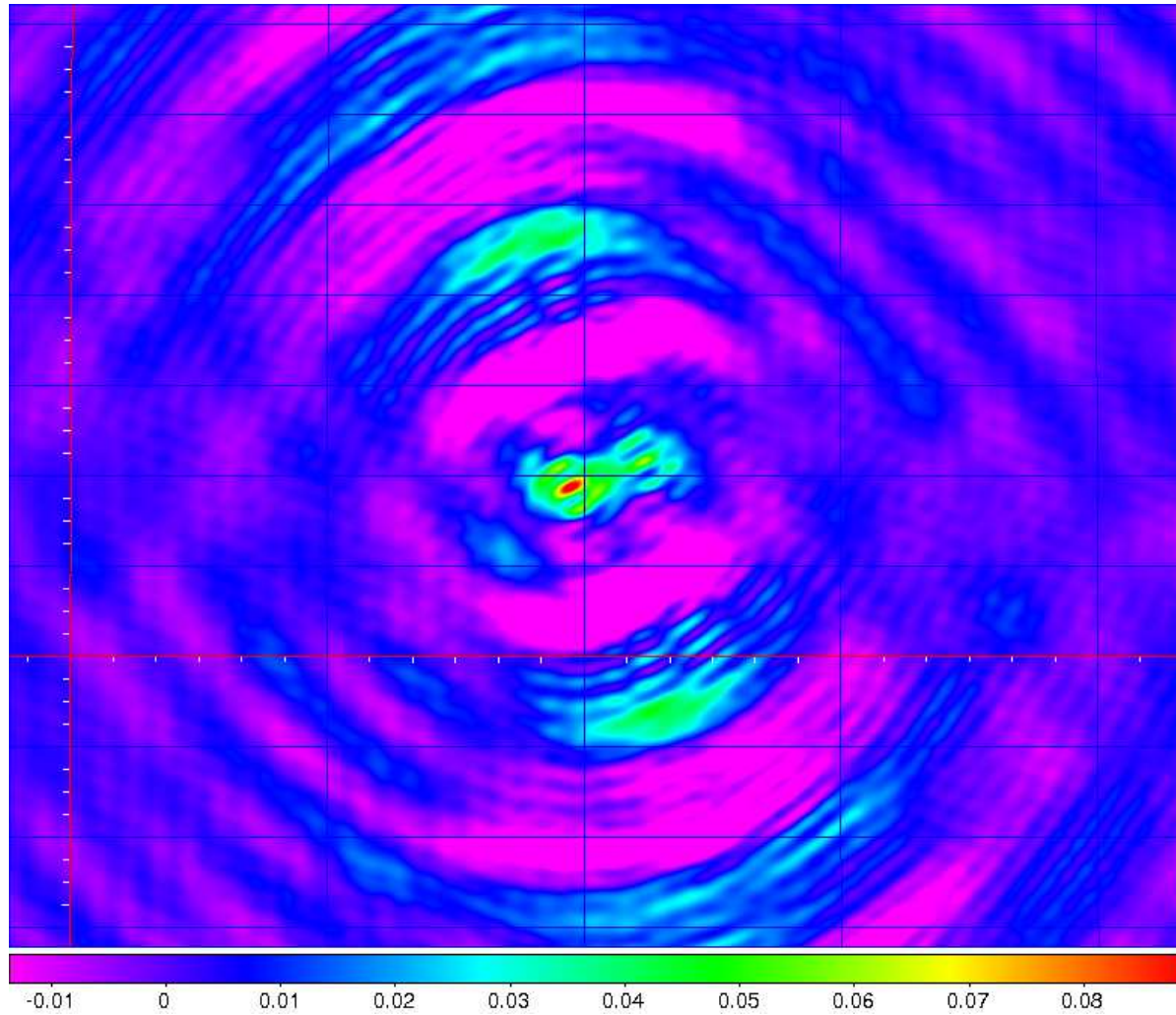
dirty image, 30 MHz LBA

LBA



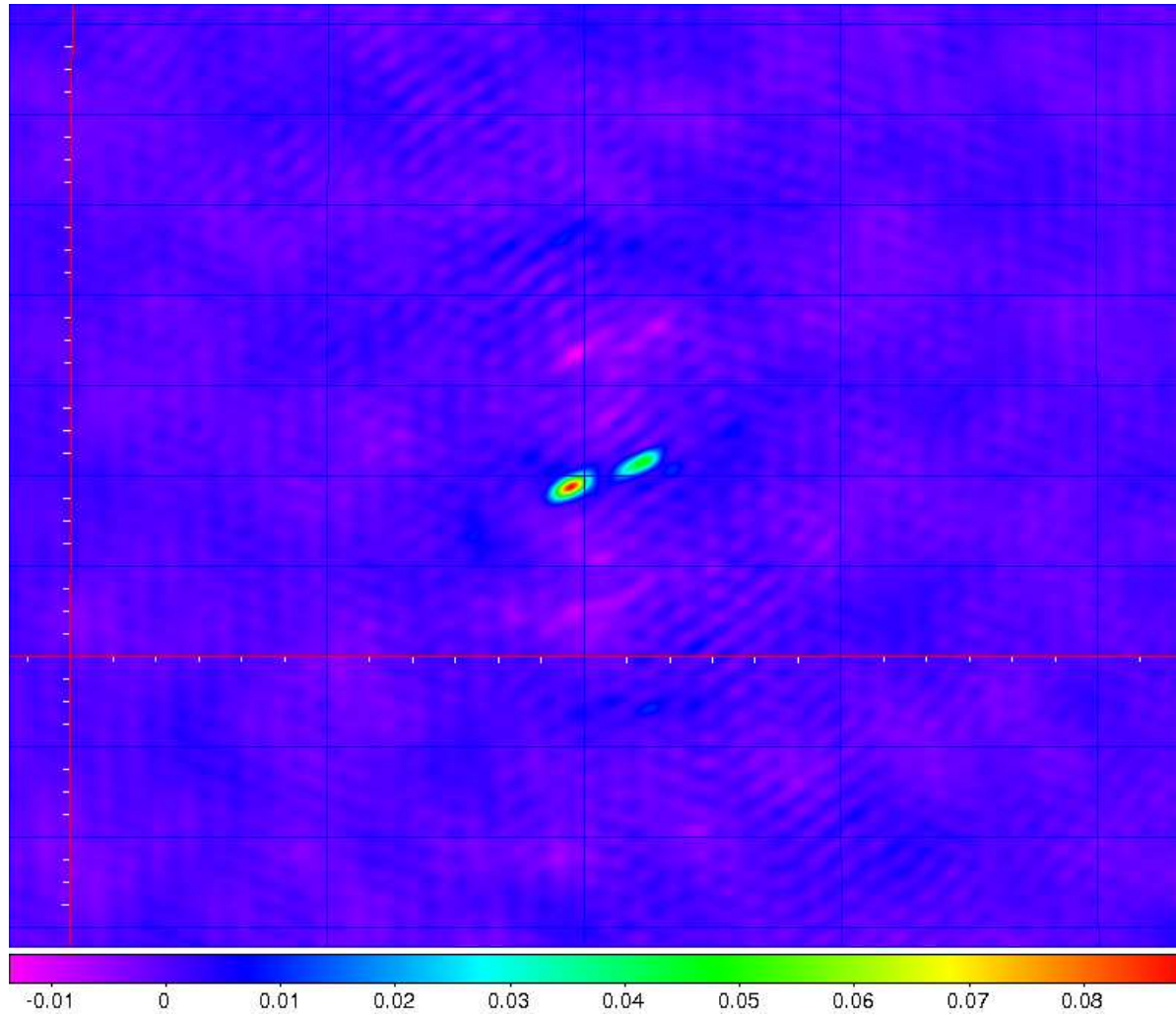
cleaned image, 30 MHz LBA

HBA



dirty image, 120 MHz HBA

HBA



cleaned image, 120 MHz HBA