

RFI in the LBA spectra

and

**Status update,
LOFAR Station Tautenburg**

Annette Haas

Thüringer Landessternwarte Tautenburg

LOFAR Status Meeting, 2 September 2009

Status 25 August 2009



LOFAR Status Meeting, 2 September 2009

SCHEDULE



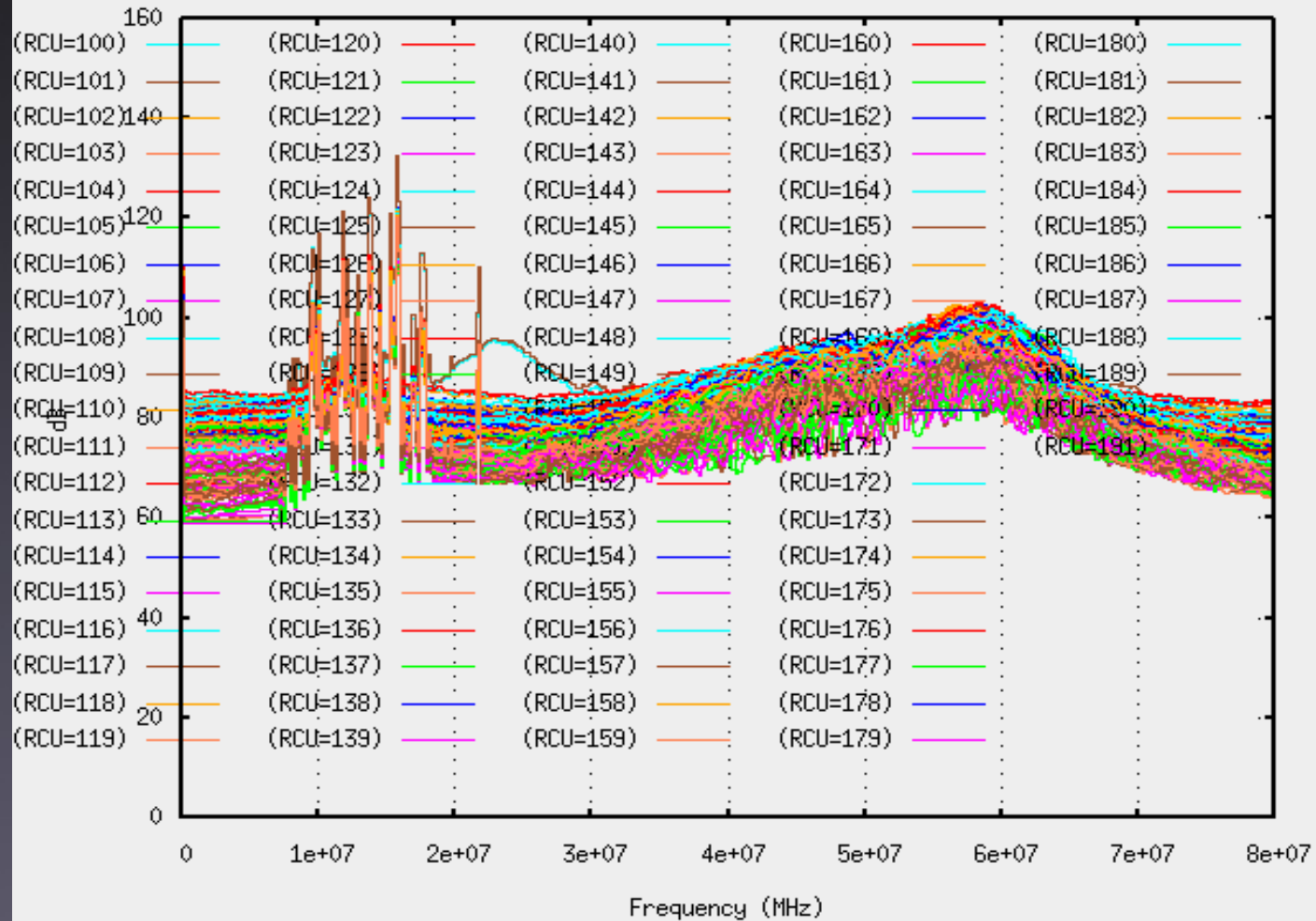
28/09/09:
Anchoring,
Delivery of the first
tiles

05/10/09:
Installation of HBAs

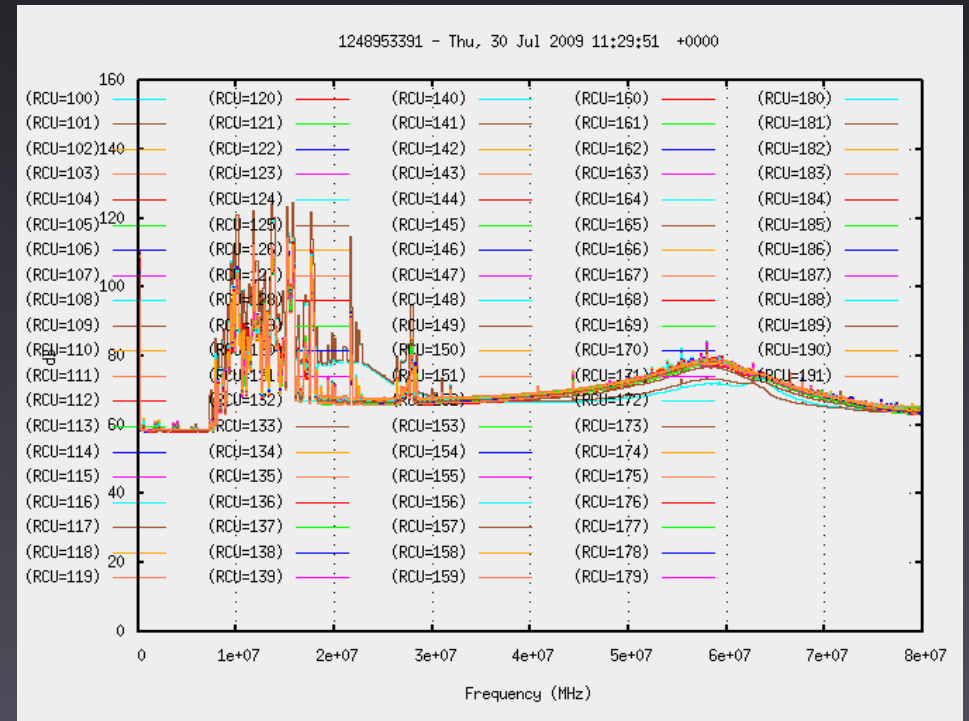
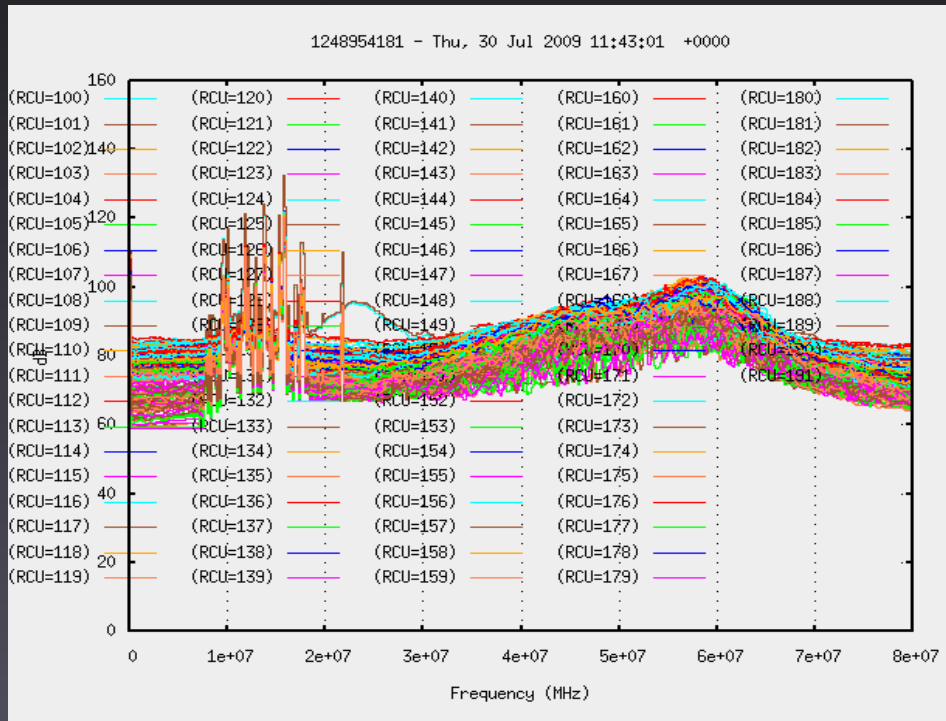
16/10/09:
Installation completed

LBA spectra from 30/07/09

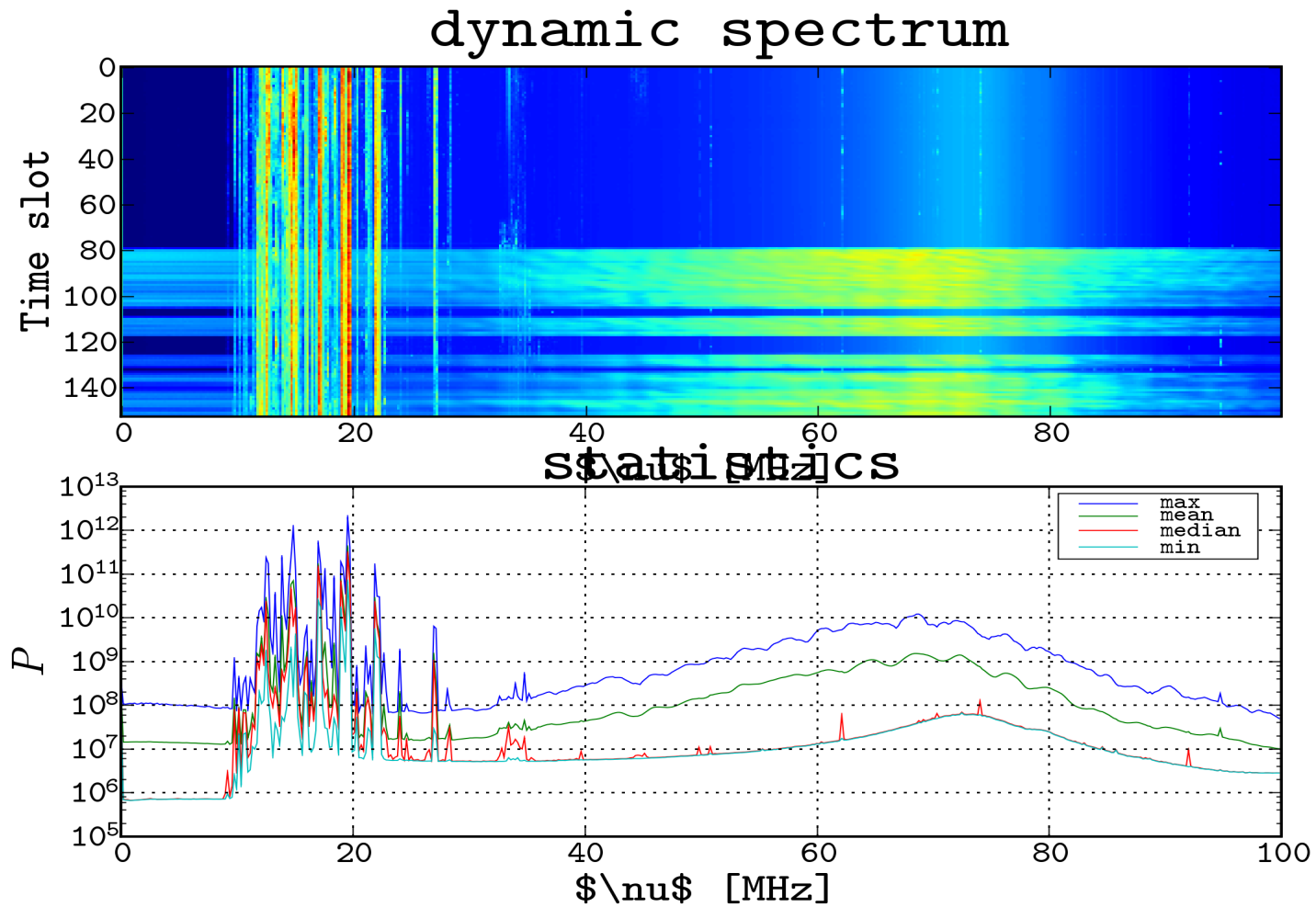
1248954181 - Thu, 30 Jul 2009 11:43:01 +0000



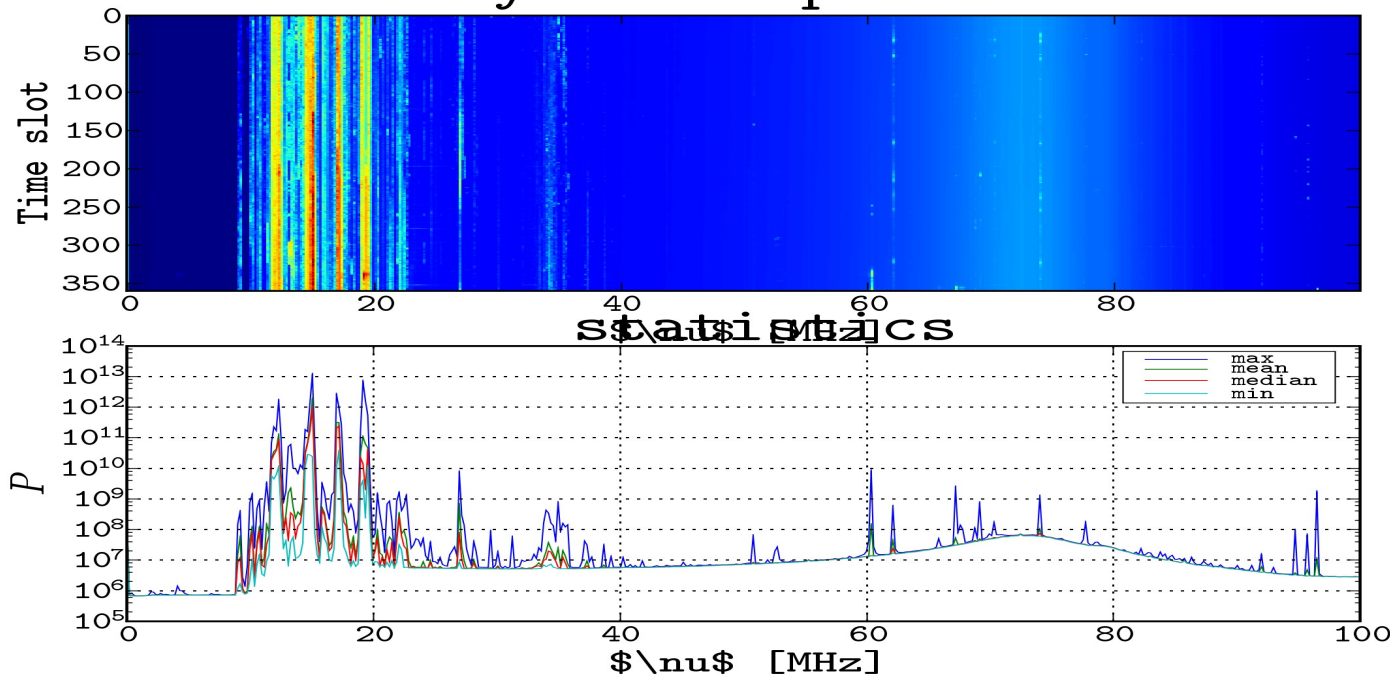
LBA antenna signals



LBA spectra influenced by a lawnmower

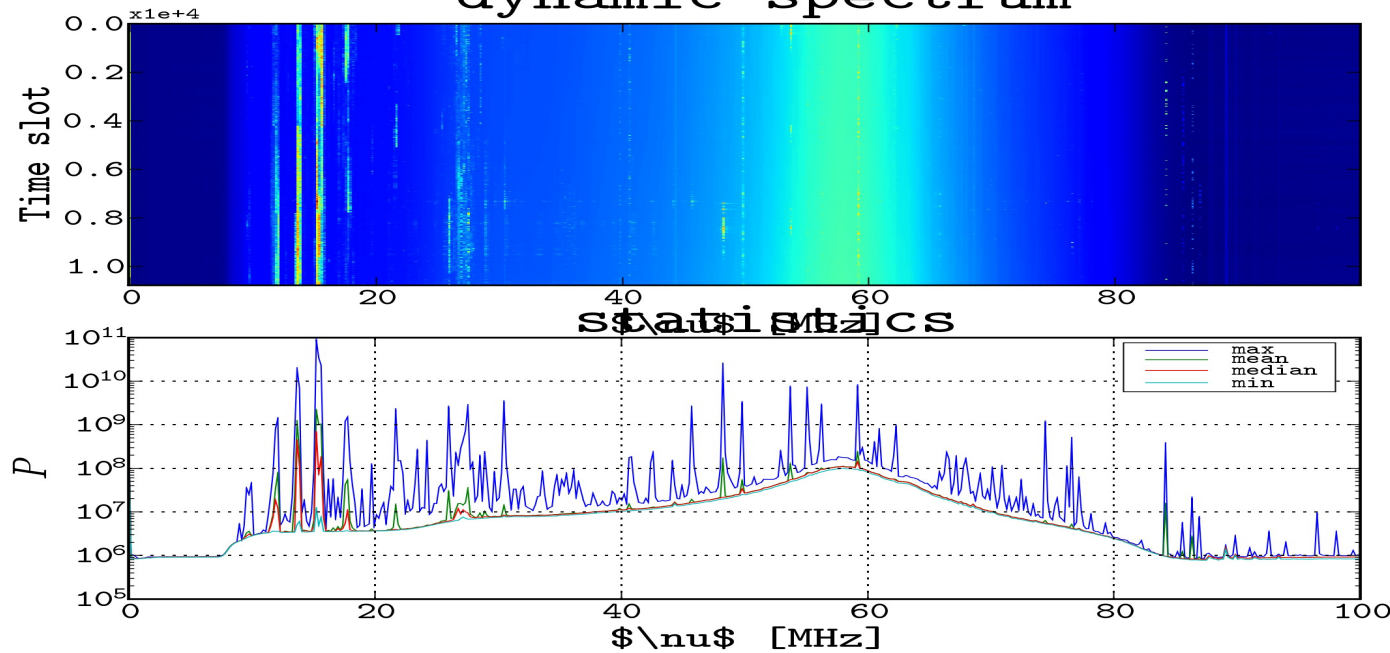


dynamic spectrum



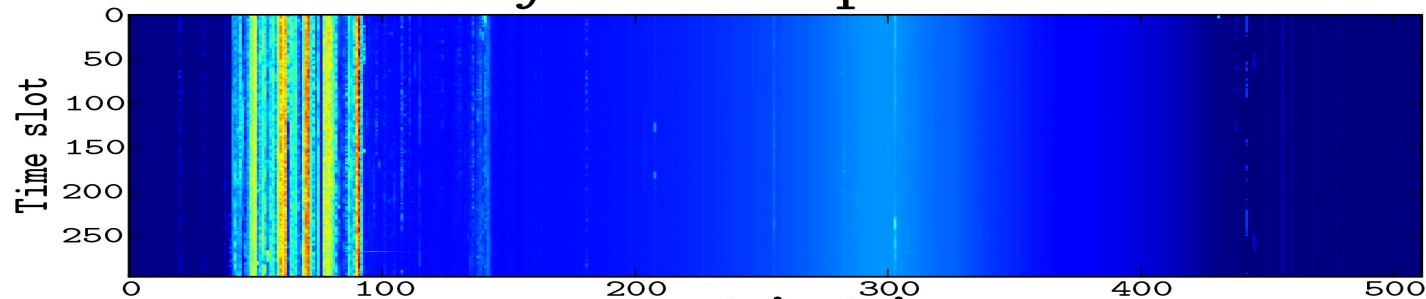
after finishing time
rcumode=3

dynamic spectrum



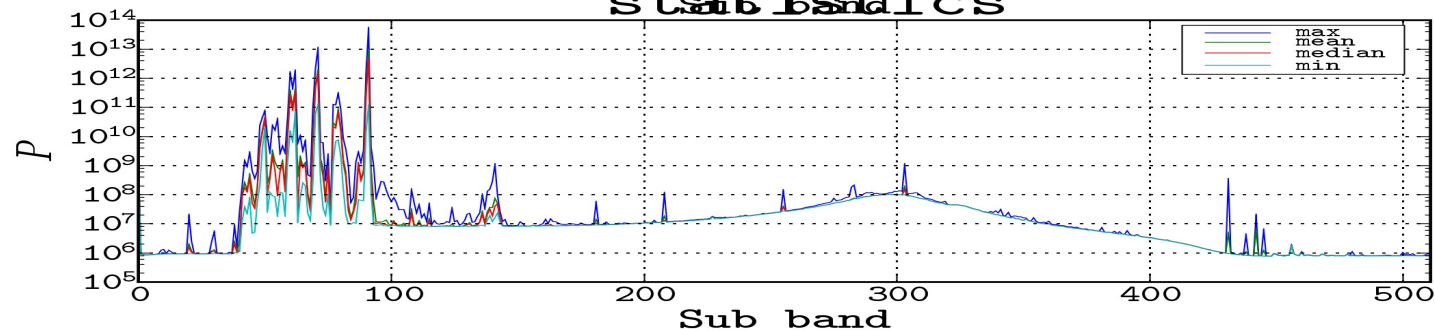
during construction work
rcumode=4

dynamic spectrum

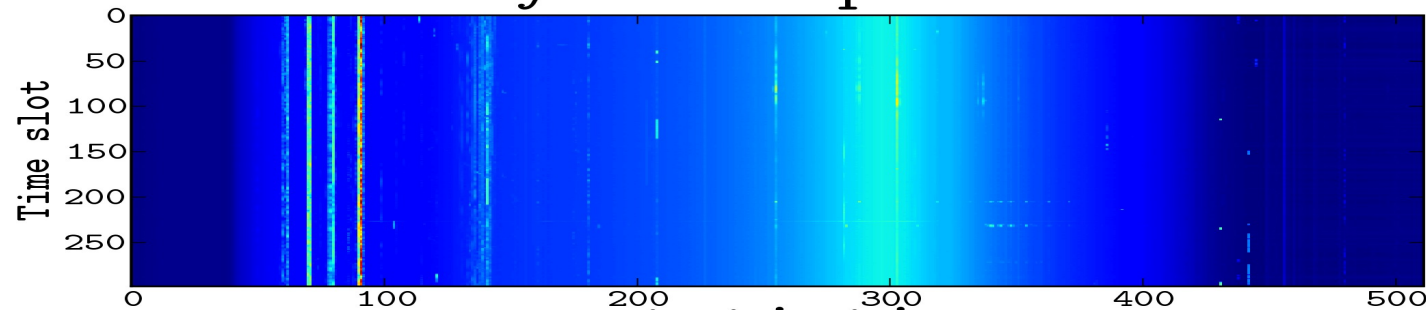


rcumode=3,
10 – 90 MHz

statistics

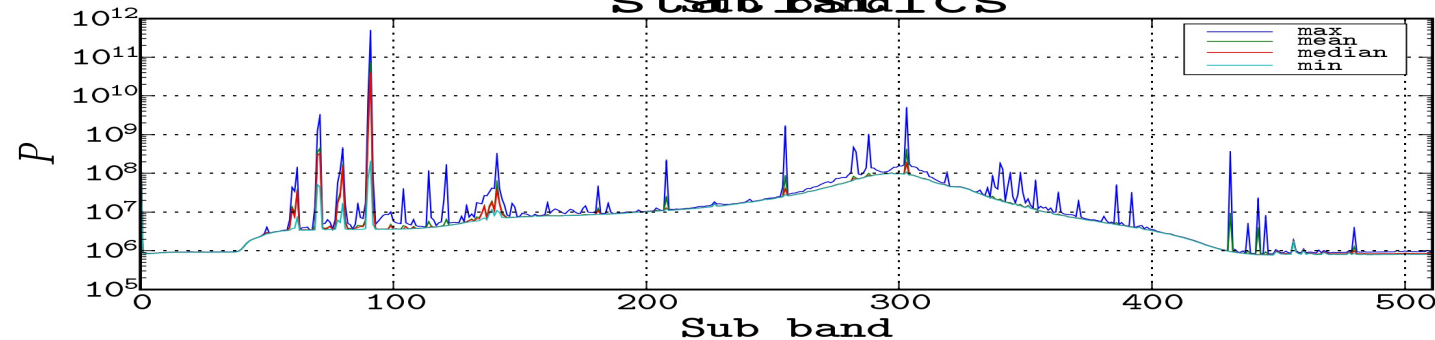


dynamic spectrum



rcumode=4,
30 – 80 MHz

statistics



Conclusion

- Maintenance time needs to be scheduled