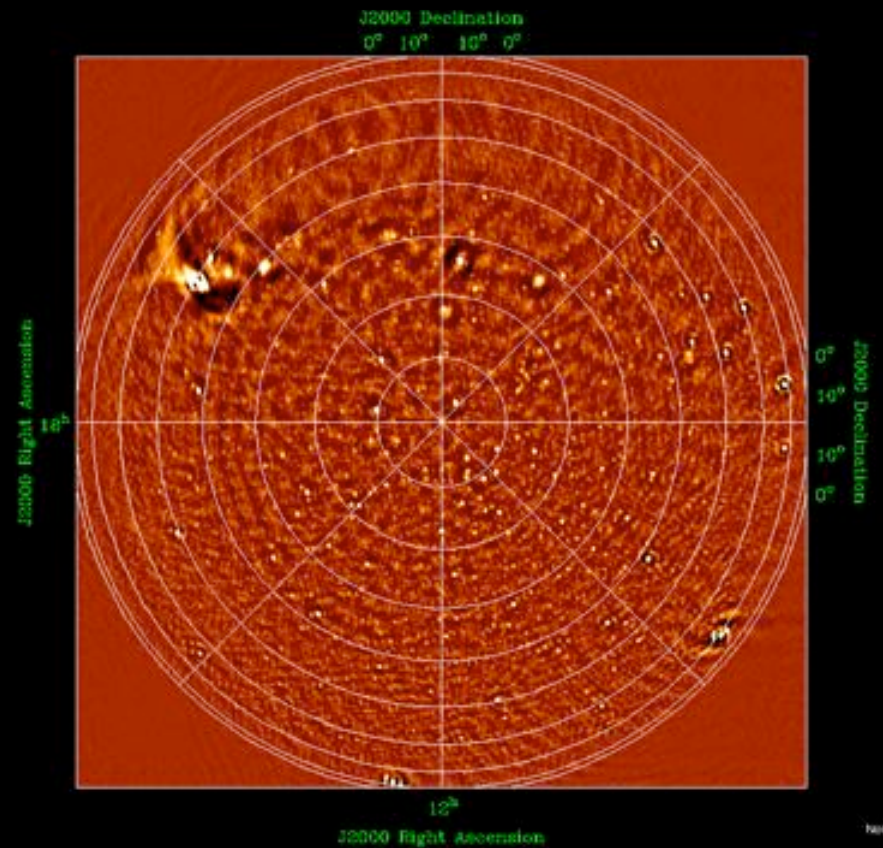
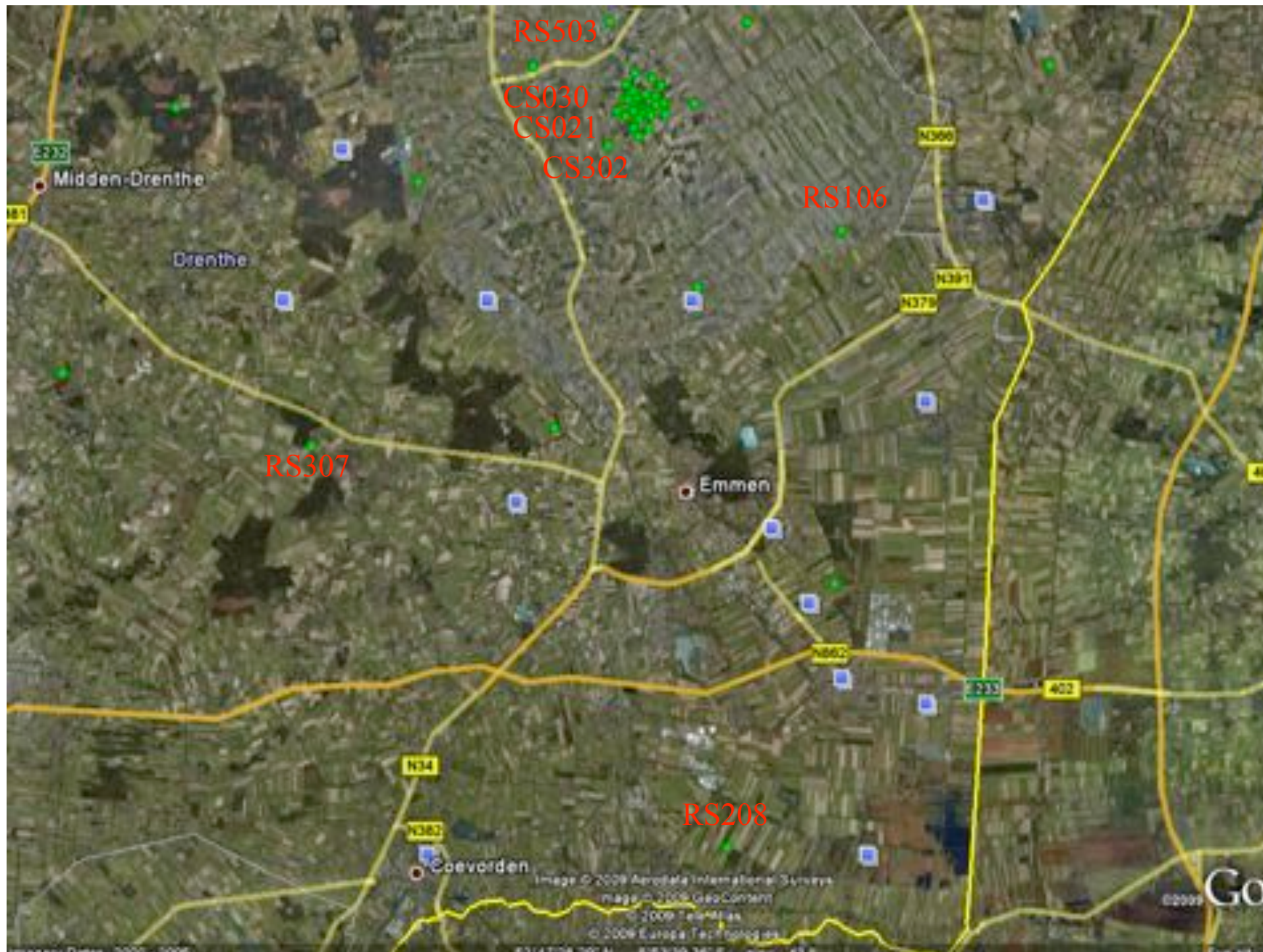


# LOFAR Roll Out Update

André W. Gunst



Station/Item	Cabinet	LBA	HBA	Fibre	CEP connection	Validated
CS302						
RS307						
RS503						
RS106						
RS208						
CS030						
CS401						
CS021						
CS032						
RS306						
CS301						
CS501						
RS509						
RS103						
CS001						
CS002						
CS003						
CS004						
CS005						
CS006						
CS007						
CS024						
CS201						
CS101						
Effelsberg						
Tautenburg						
Garching						
Totals	26	22	10	10	8	5



## ➤ Jumbo frame non-compliance

- all network cards in the storage nodes are exchanged
- a network card in the offline machines is added
- 16 September – 18 September



- Machines did not see each other
- Old clusters not in right IP range (was no issue because there was always communication within data VLAN)
- New cluster machine have a smaller IP range according to the final IP plan
- Effelsberg “proxy ARP” is switched on
  - 👉 gives more intelligence to the switch
- Workaround: proxy ARP switched off
- Consequence: Effelsberg data is broadcasting in Effelsberg switches