



HBA Installation at Tautenburg

(finished by Oct. 21)

Matthias Hoeft





Manpower and equipement

- Autonational team (3 pers)**
- ~ 8 helpers from Tautenburg**
- crane (18m)**
- 2x forklift**
- Multicar (mini truck)**
- path of wooden plates**

Logistics! Logistics! Logistics!

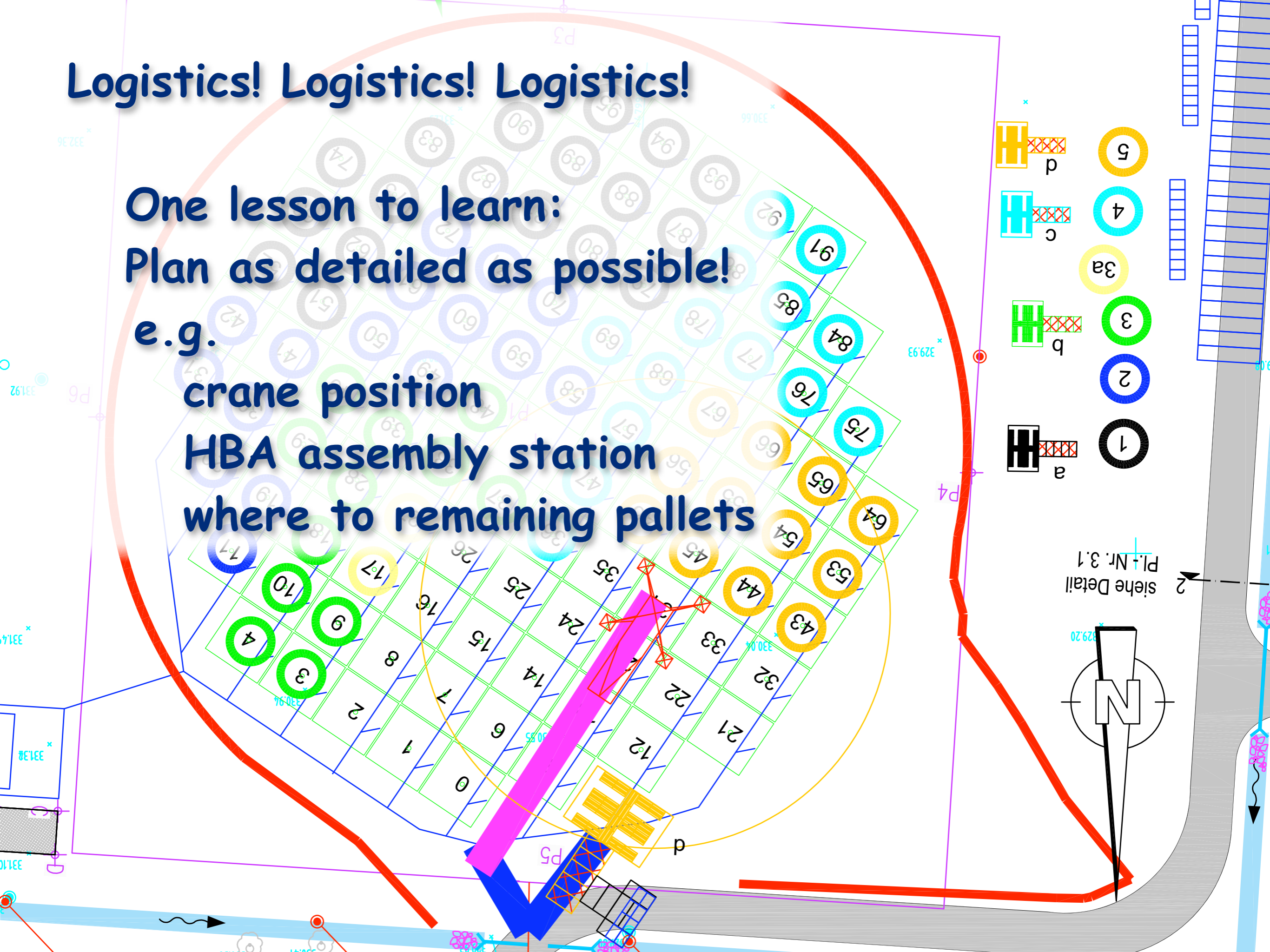
One lesson to learn:
Plan as detailed as possible!

e.g.

crane position

HBA assembly station

where to remaining pallets



An aerial photograph of a solar panel array. The panels are dark and arranged in a grid pattern. Three birds are perched on the panels: one with orange and black feathers, one with green and white feathers, and one with blue and white feathers. Long shadows are cast by the birds and the panel lines. A semi-transparent white box is overlaid on the bottom right of the image, containing text.

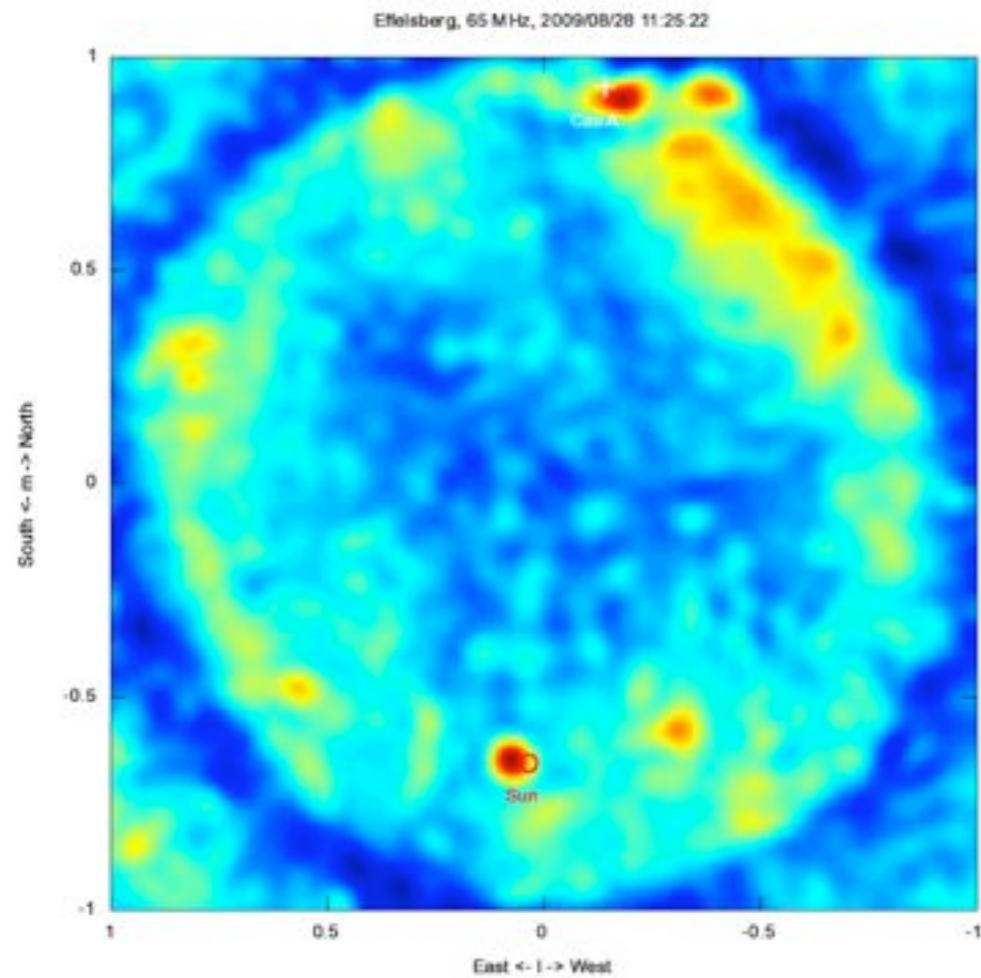
Time needed:

**about 16 tiles per day are doable
(our maximum was 19 tiles)**

Status Tautenburg station:

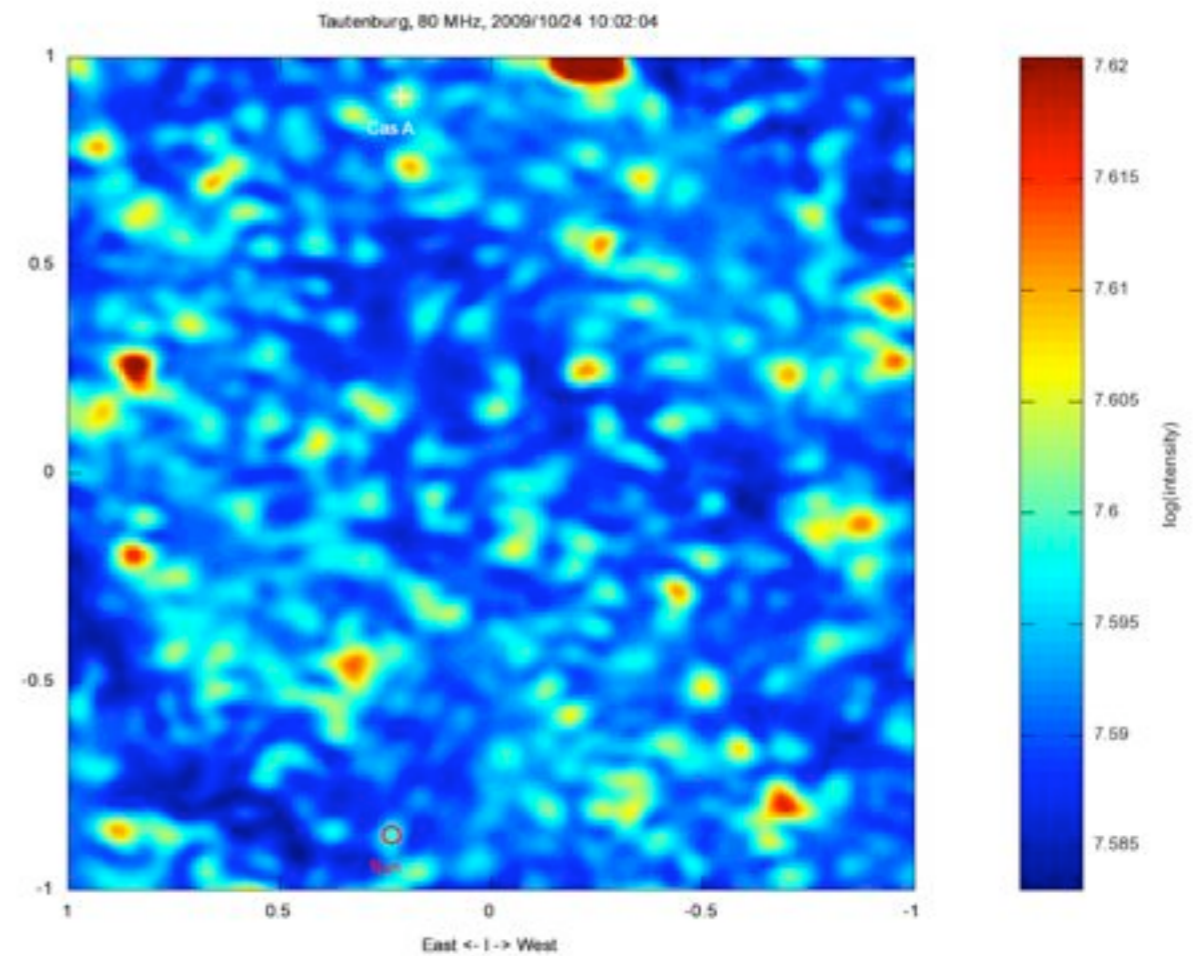
- LBA works in stand-alone mode
- Issues with data stream to local computer
- HBA: patch cables have to be installed
- Station validation
- Data link to NL ready by Jan 1 (planning)

Issue: Imaging with LBA field (Solar KSP, Frank Breitling) Significant differences between Eff and Tbg. Why?



Effelsberg

-



Tautenburg



Thanks to all who worked at the field:

**Han, Stuard, Zabet, Michael, Michael, Bernd,
Jörg, Holger, Stefan, Alexander, Jürgen, Johannes,
Annette, Jochen, Philip, Marlis, James,**