

# AGENDA

- Observatory Status Report (A. Polatidis)
- Software Status Report (M. Wise)
- Fringes with Unterweilenbach (O. Wucknitz)
- FRAT update (S. ter Veen)

## Radio Observatory Report

*Antonis Polatidis*

# Rollout Status

20 stations validated -  
CS032 and CS103 added  
since last meeting

Map of LOFAR stations:  
“<http://www.astron.nl/~heald/lofarStatusMap.html>”



Station/Item	Cabinet	LBA	HBA	Fibre	CEP connection	Validated
CS302						
RS307						
RS503						
RS106						
RS208						
CS030						
CS401						
CS021						
CS032						
RS306						
CS301						
CS501						
RS509						
CS103						
CS001						
CS002						2 L nOK
CS003						2 H nOK
CS004						
CS005						8H nOK
CS006						
CS007						
CS024						
CS201						
CS101						
CS026						
RS205						
CS017						
RS104						
RS210						
RS310						
RS404						
RS406						
RS407						
RS409						
RS410						
RS508						
Effelsberg						
Tautenburg						
Garching						
Potsdam						
Juelich						
Nancay						
Onsala						
Chilbolton						
Totals	31	28	25	29	25	20

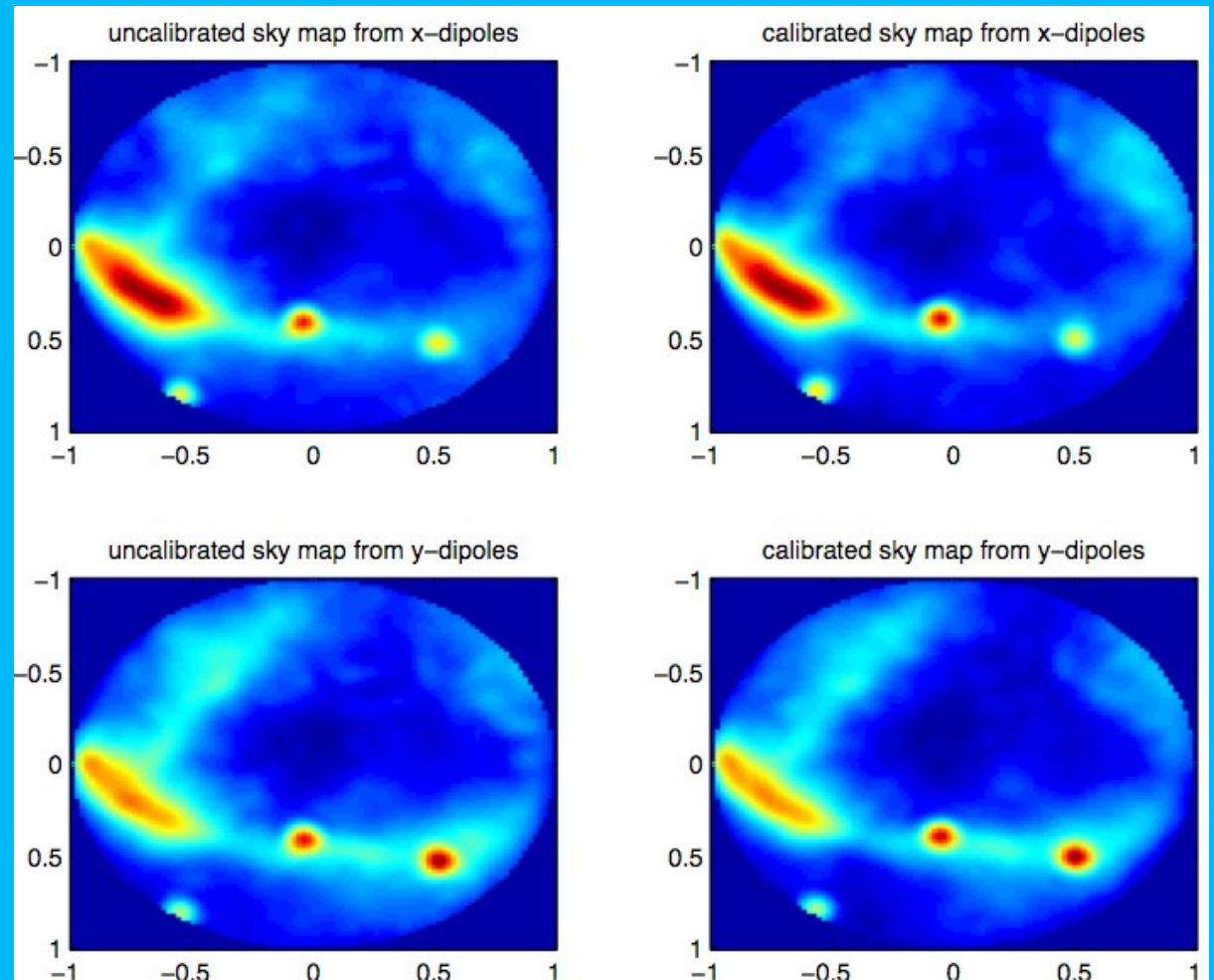
## Development Work / Issues

- Tautenburg, CS032, CS001 integrated in SAS/MAC
- SAS/MAC related :
  - Solved problem with using both HBA fields in core stations (tested today)
  - Setting up stations for pulsar observations OK - SAS/MAC can also start CEP
  - Integration of SAS/MAC and MoM tested this week
- Sharing 3 stations in Germany and eVLBI can not be combined. When eVLBI is active, stations will be configured to 48 beamlets (<48MHz bandwidth).  
When there is no eVLBI, we can do 3 stations at 48MHz.

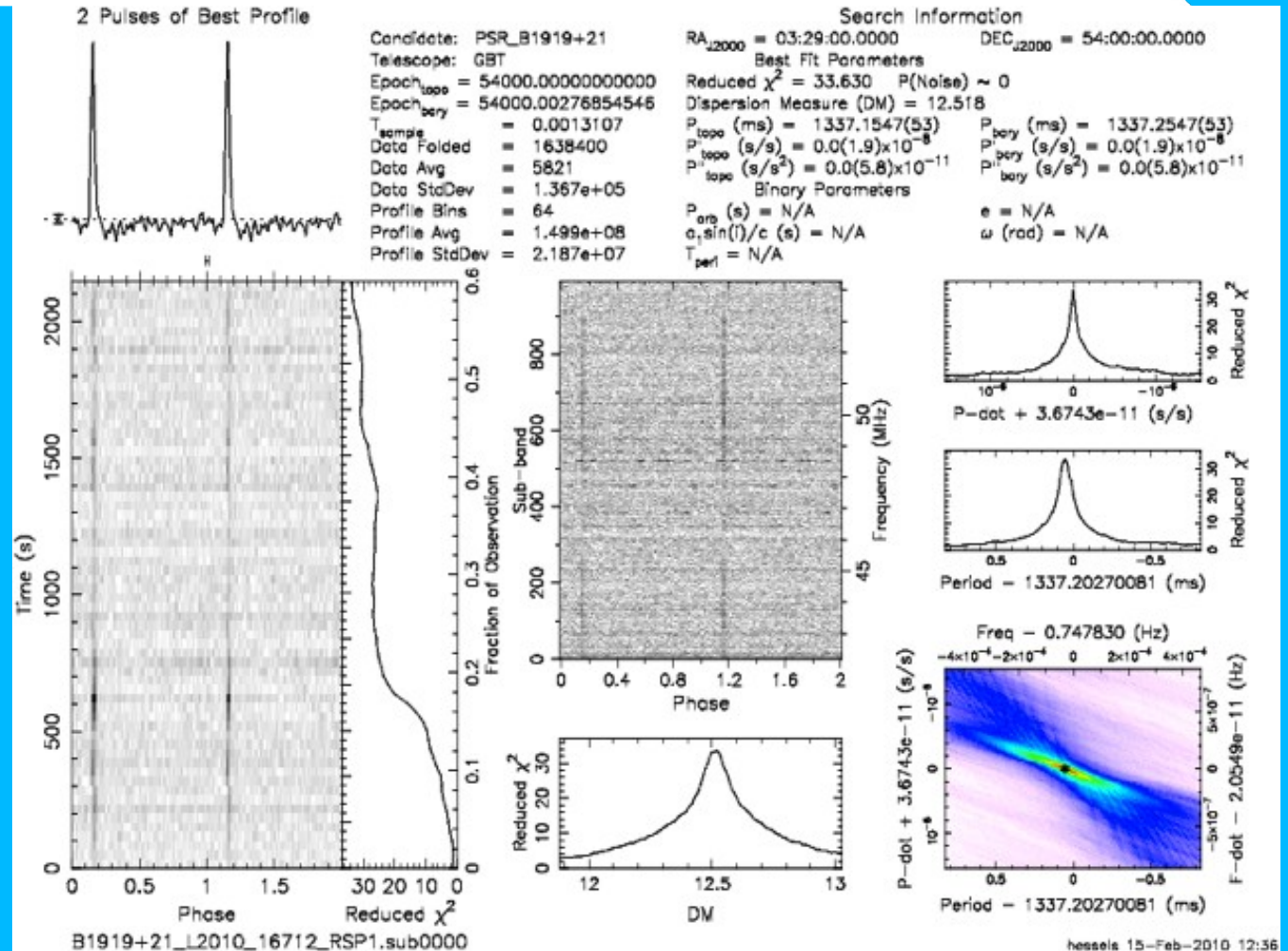
- Obs 256 - Investigations of ripples seen in XX in HBA observations:  
*Inconclusive, will be repeated this week*
- Observations with Unterweilenbach, Tautenburg and NL stations (12 Feb - Obs 274 - L2010-16704 )
- “Valentine’s” Pulsar LBA observations (Obs 273 - Feb 13-14)
- Control and Metadata Busy Week:  
Test observations described by MoM and executed by SAS/MAC

- To test the flow of an observation starting with an astronomer defining a project, the interaction with the Radio Observatory, data taking and the flow of process data through the online and offline systems up to the data archive.
- Currently: Simulating an astronomer using MoM to describe their observation, interaction with RO support scientists and observers, and observation taking place under SAS/MAC.
- Will simulate: scheduling of multiple observations, processing (a “cut down” pipeline), data scrutiny and archiving of data.

- All sky image from the Unterweilenbach LBA field (12 Feb)
- Pulsar observations with international stations (see J. Hessel's talk)



# Pulsars with Unterweilenbach, Effelsberg and Tautenburg



■ J. Hessels

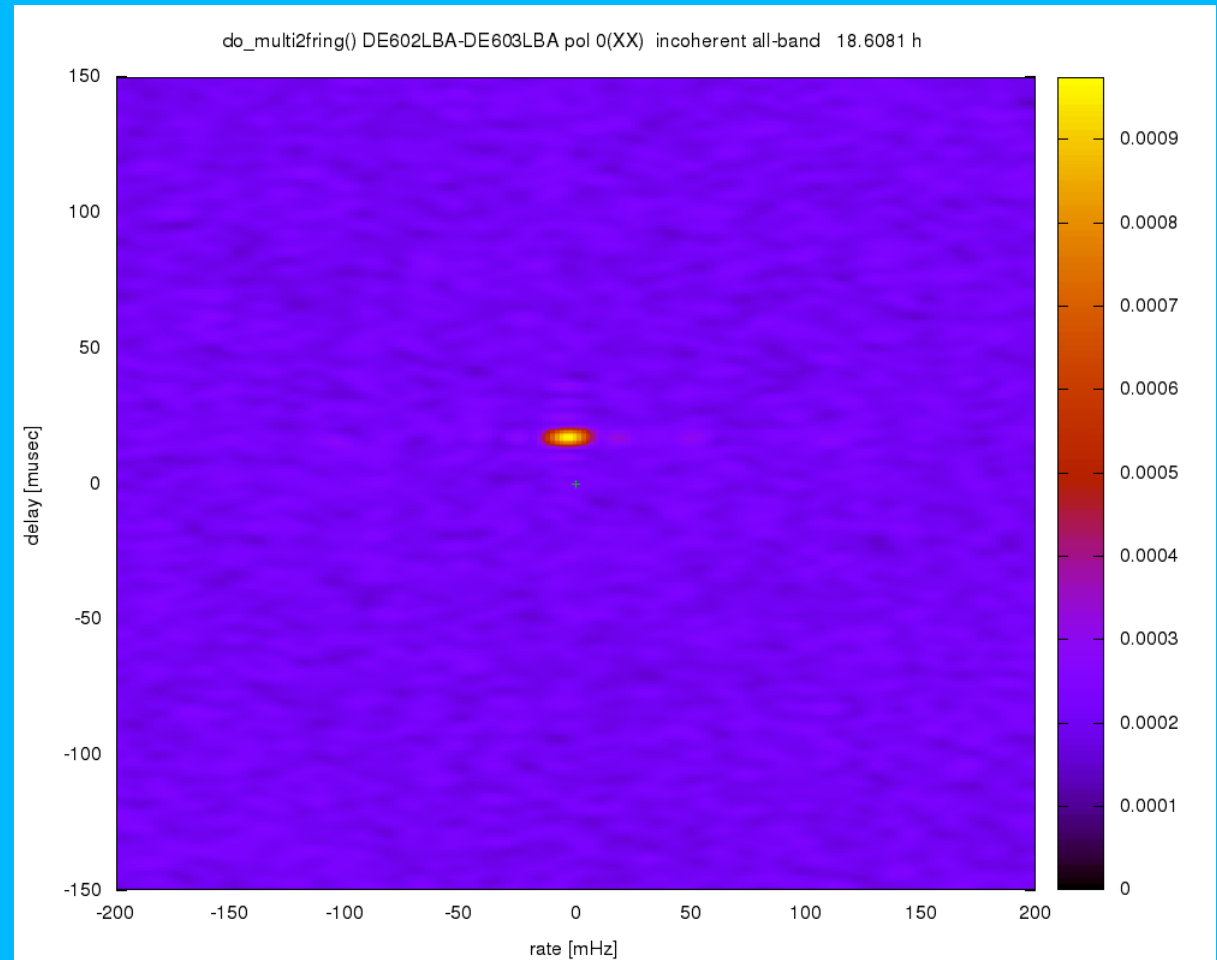
Pulsar LBA observations, incoherently summed together.

Will continue with similar observations; wait for upcoming LSM



# Unterweilenbach First Fringes

- L2010\_16704
- Observation of 3C196 with CS005, DE601, DE602, DE603, RS503, RS307, RS306, RS106
- 160 Subbands, 6 hours
- Fringes to all stations.
- Investigating: Dropout of data, possibly due to RSP boards



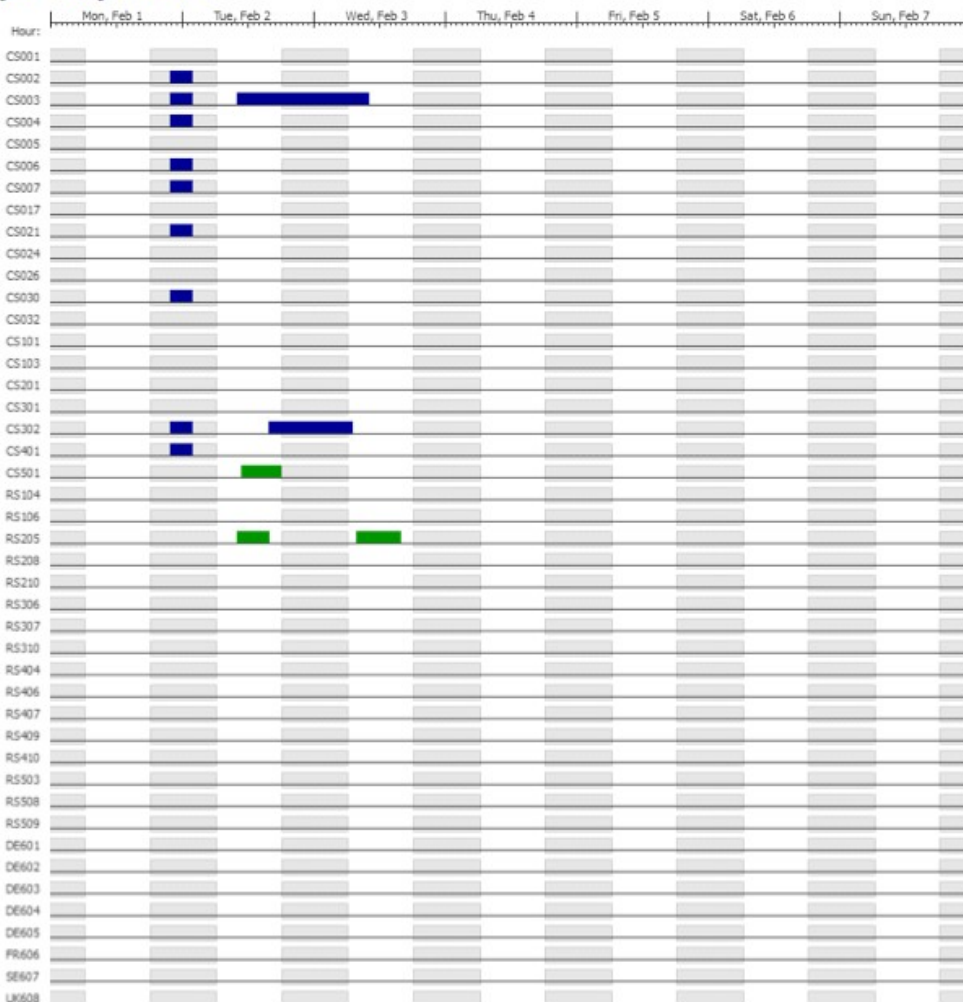


- The current schedule of LOFAR can be seen online:

`"www.astron.nl/lofar-schedule/schedule/schedule.php"`

## LOFAR Schedule for week 5 (2010)

Change date: woensdag 3 feb 2010 10:36



February 2010

<< today >>

February 2010						
Mo	Tu	We	Th	Fr	Sa	Su
1	2	3	4	5	6	7
8	9	10	11	12	13	14
15	16	17	18	19	20	21
22	23	24	25	26	27	28

LOFAR schedule tasks for week 5 (2010)							
Project	Task	Type	Stations	Start	Stop	Duration	Source
LEA054	Obs 267	OBSERVATION	CS002;CS003;CS004...	02/01/2010 21:50:00	02/02/2010 01:50:00	04:00:00	Maon
Test RS205	Test RS205	TEST	RS205	02/02/2010 10:00:00	02/02/2010 16:00:00	06:00:00	Cyg-A
Obs 145	Obs 145	OBSERVATION	CS003	02/02/2010 10:00:00	02/03/2010 10:00:00	24:00:00	
Coordinates CS501	Test CS501	TEST	CS501	02/02/2010 11:00:00	02/02/2010 18:00:00	07:00:00	Cyg-A
LEA054	Obs 269	OBSERVATION	CS302	02/02/2010 16:00:00	02/03/2010 07:00:00	15:00:00	
Test RS205	Test RS205	TEST	RS205	02/03/2010 08:00:00	02/03/2010 16:00:00	08:00:00	

- L2010\_16704
- Observation of 3C196 with CS005, DE601, DE602, DE603, RS503, RS307, RS306, RS106
- 160 Subbands, 6 hours
- Fringes to all stations.
- Investigating: Dropout of data, possibly due to RSP boards

*Wait for O. Wucknitz's presentation*