

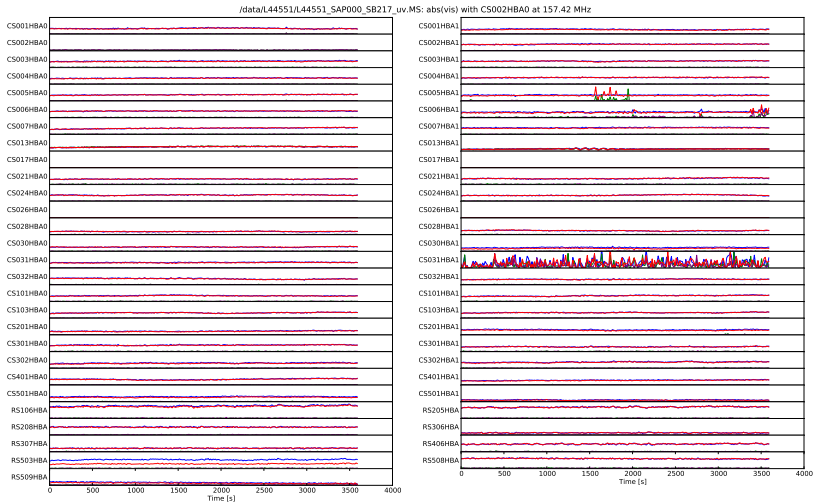
HBA sensitivity problems

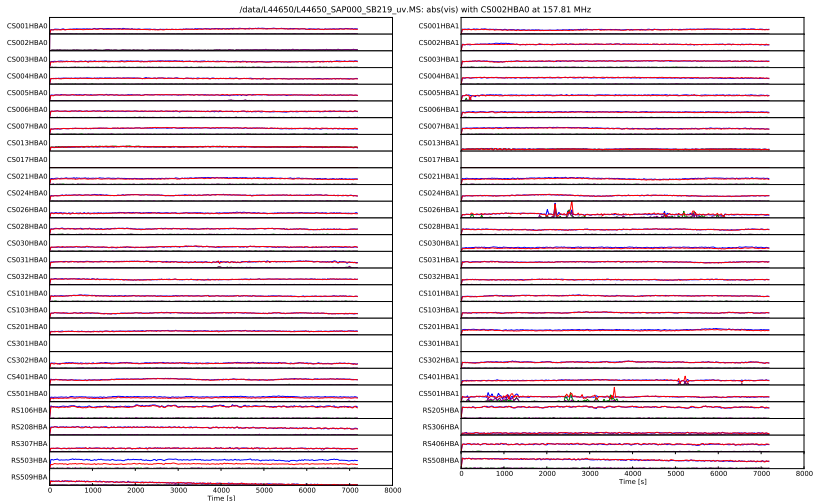
M.A. Brentjens

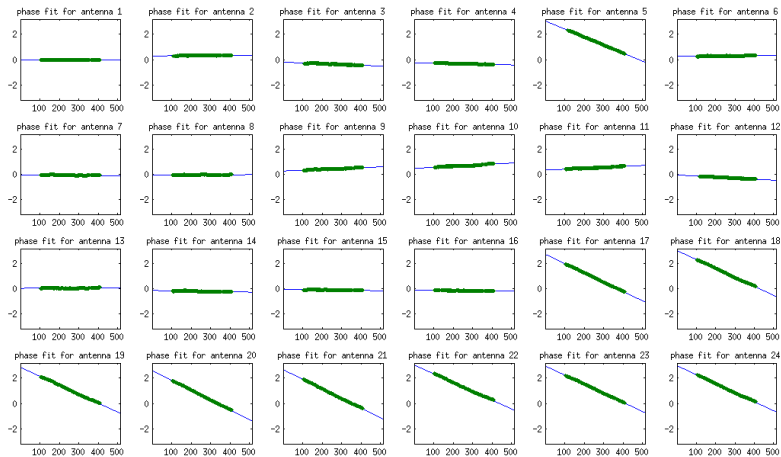
Radio Observatory
ASTRON, Dwingeloo, The Netherlands

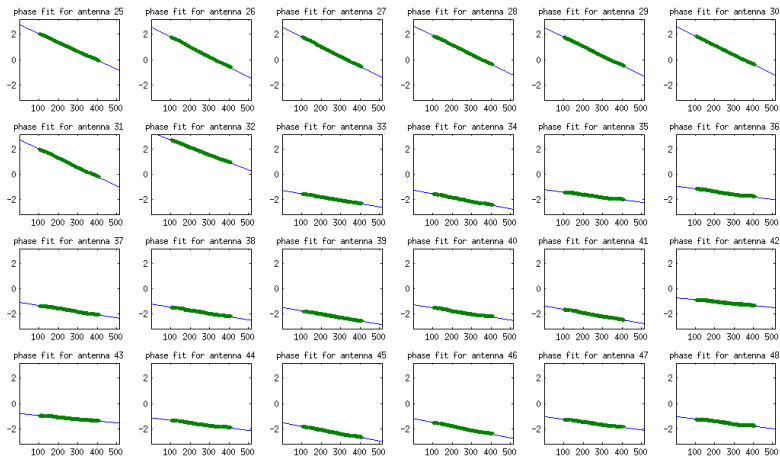
February 8, 2012

- 1 HBA sensitivity problems
- 2 One faulty RSP board
- 3 Two faulty RSP boards
- 4 Two faulty RSP boards
- 5 What can holography do?
- 6 Now what?



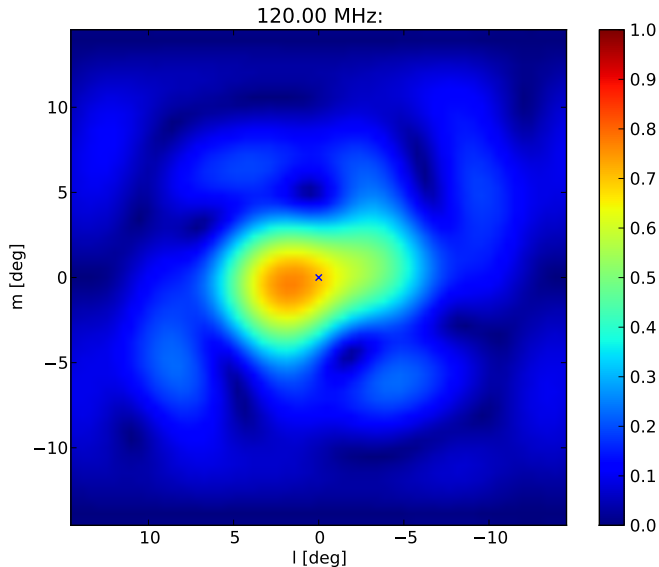


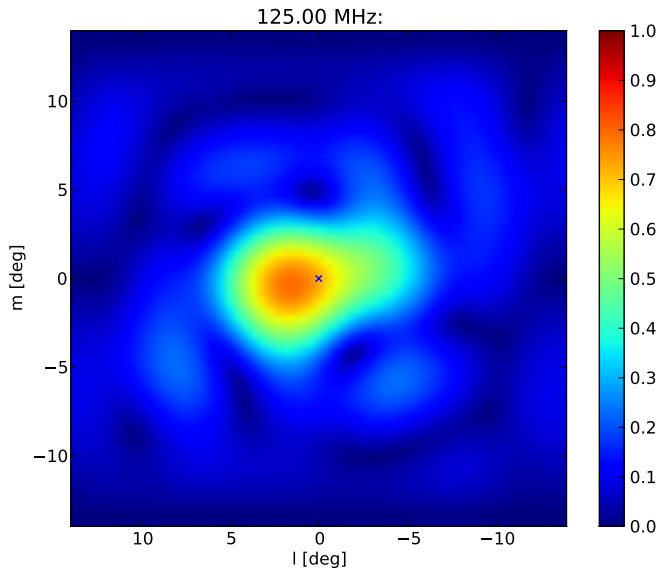


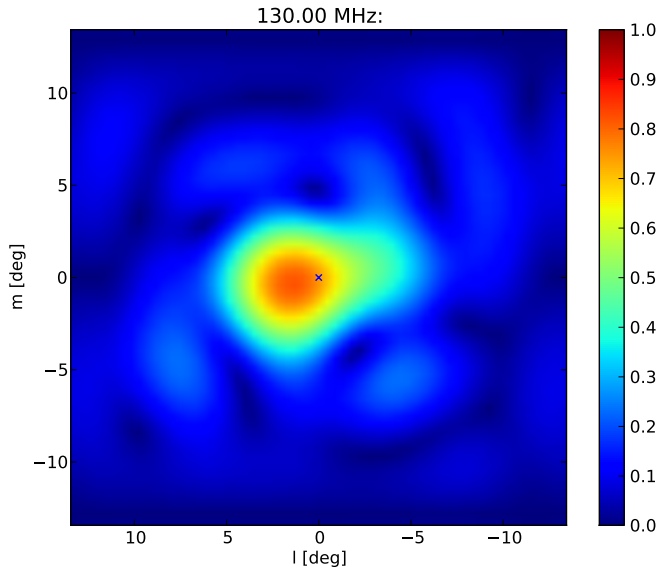


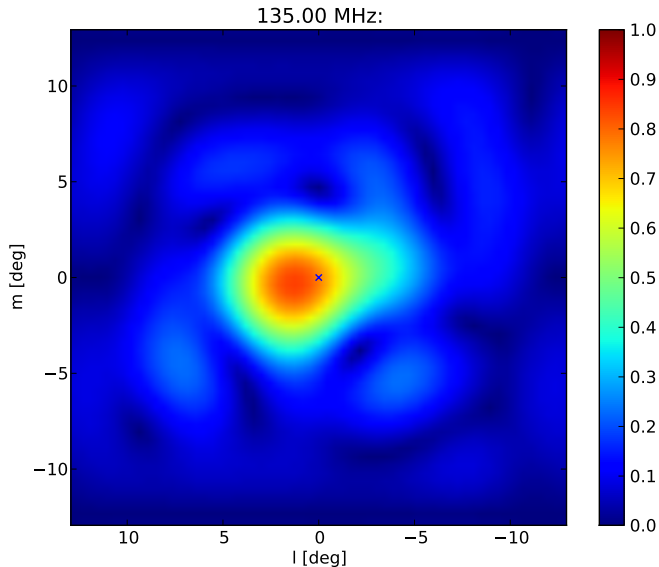
- Gains *appeared* to be quantized at 157 MHz at 30–35% and 60–70%.
- Gains for some stations fluctuated wildly between observations (Ger de Bruyn).
- Previous problems with PPS synchronization.
- Superterp does not show this issue at all. Very stable.

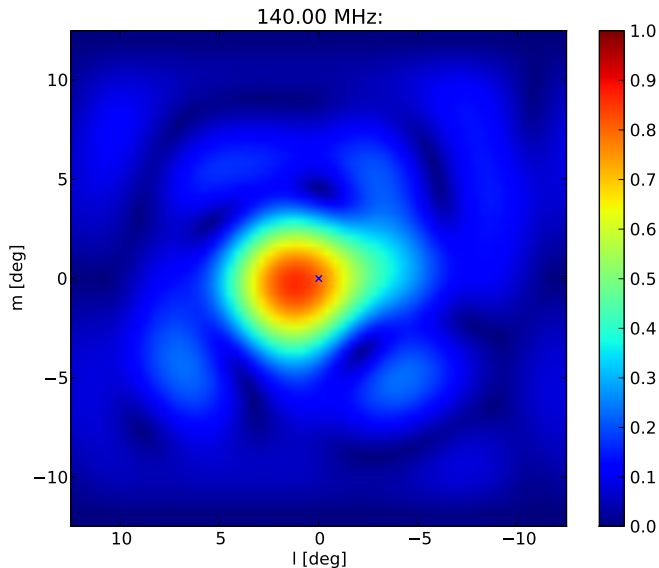
- 1 HBA sensitivity problems
- 2 One faulty RSP board**
- 3 Two faulty RSP boards
- 4 Two faulty RSP boards
- 5 What can holography do?
- 6 Now what?

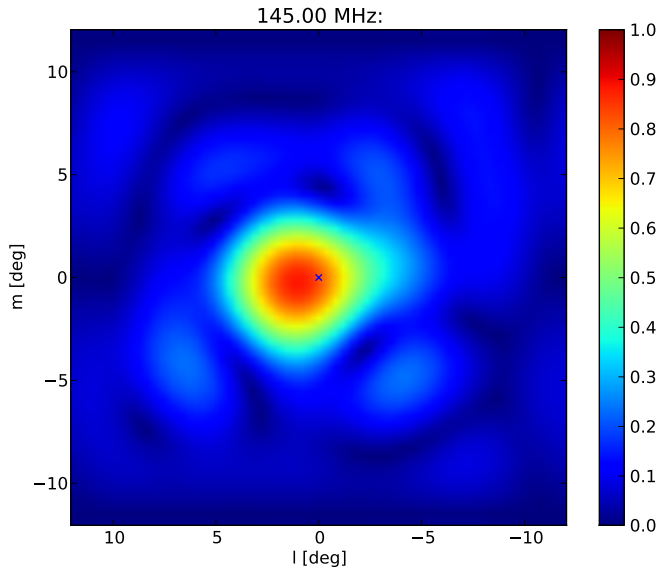


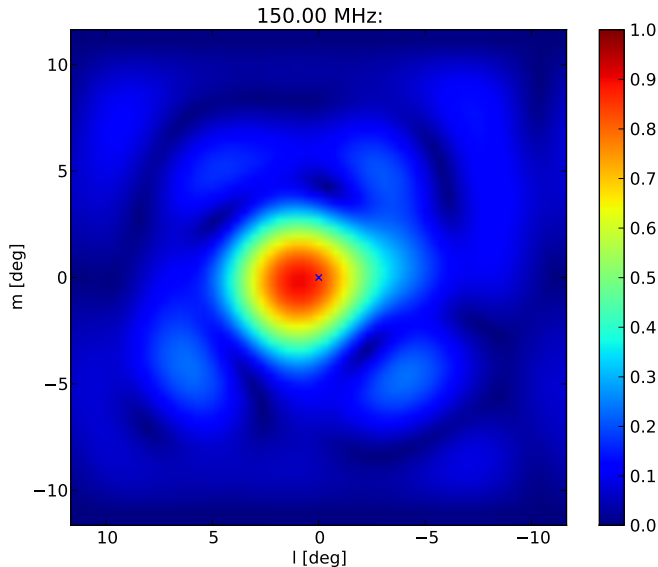


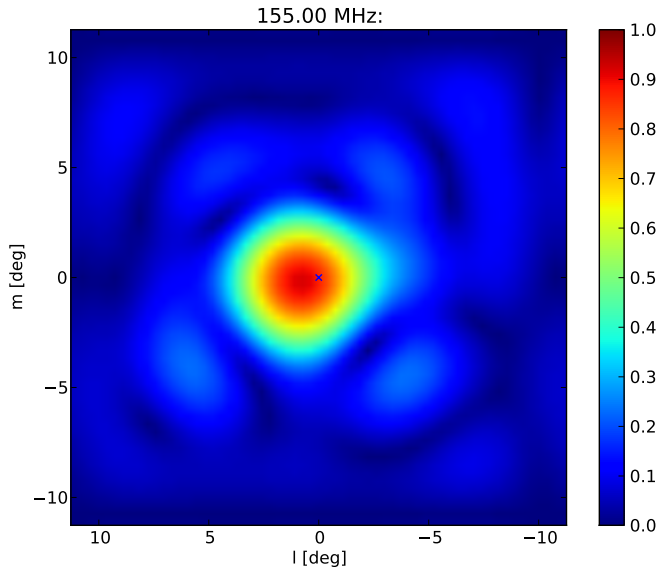


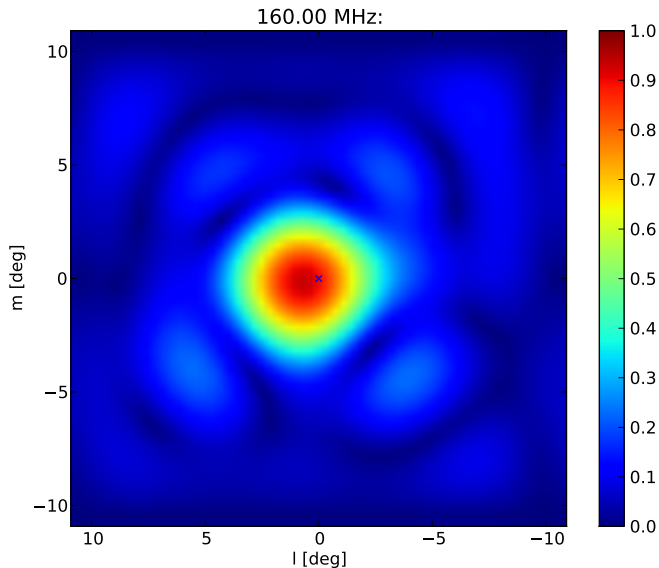


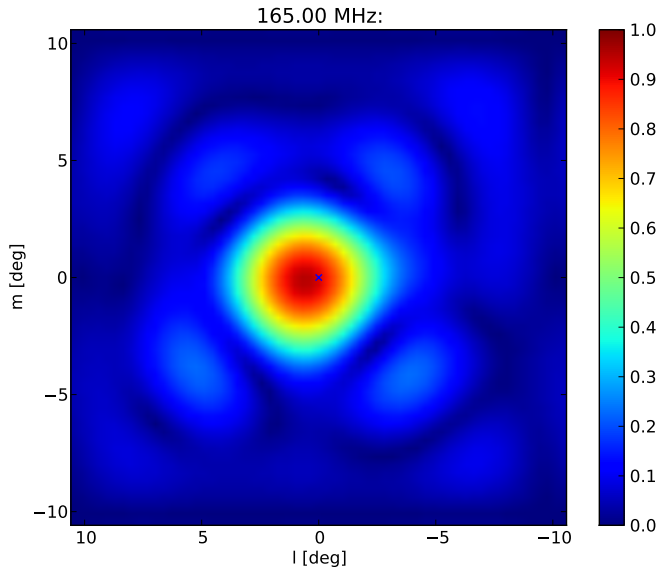


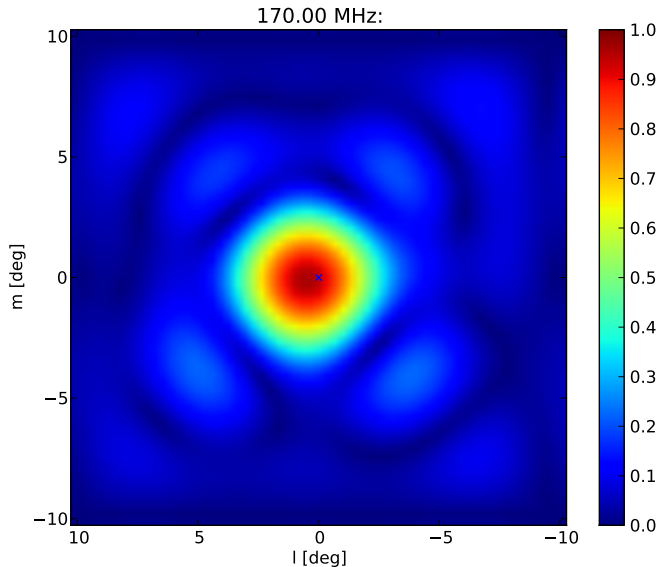


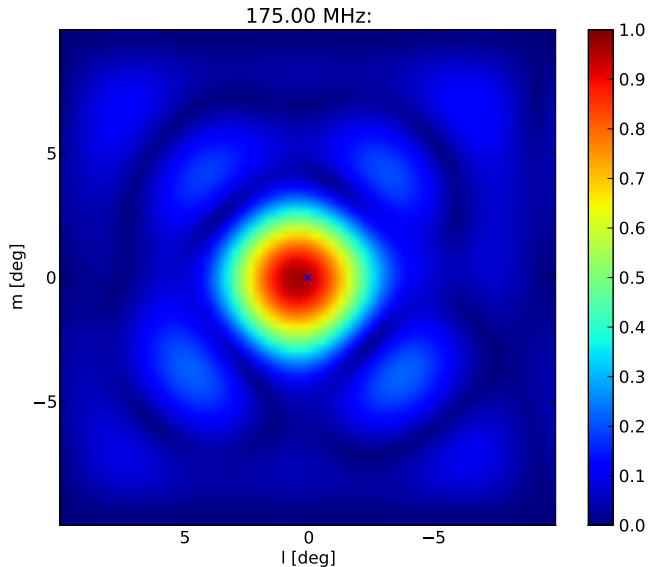




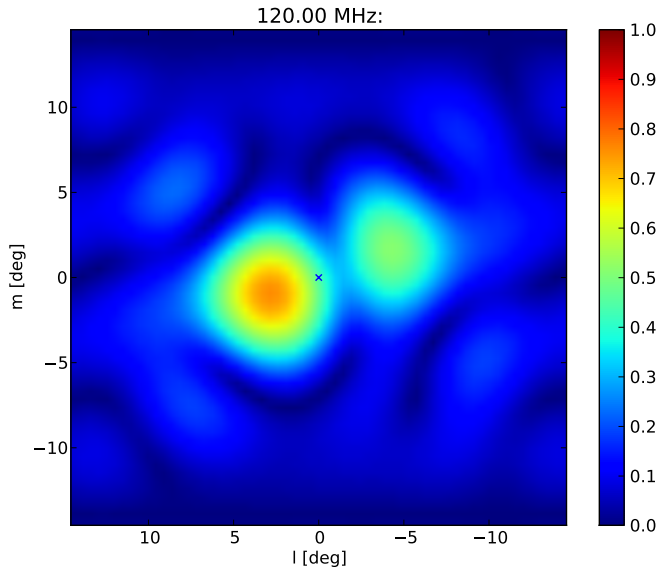


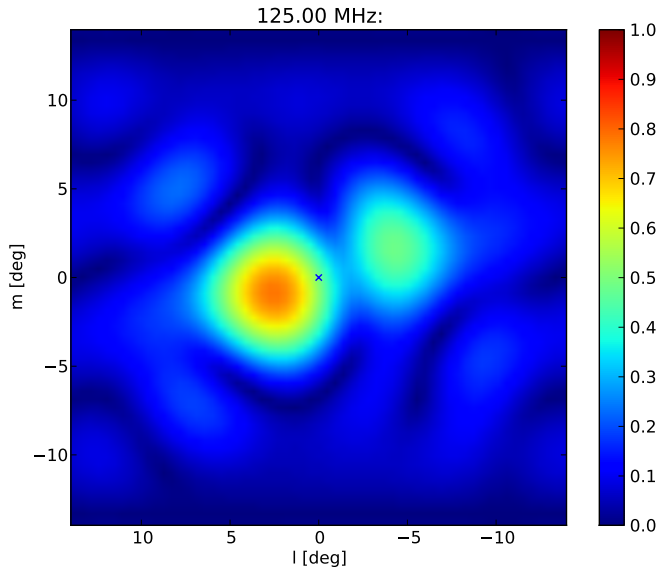


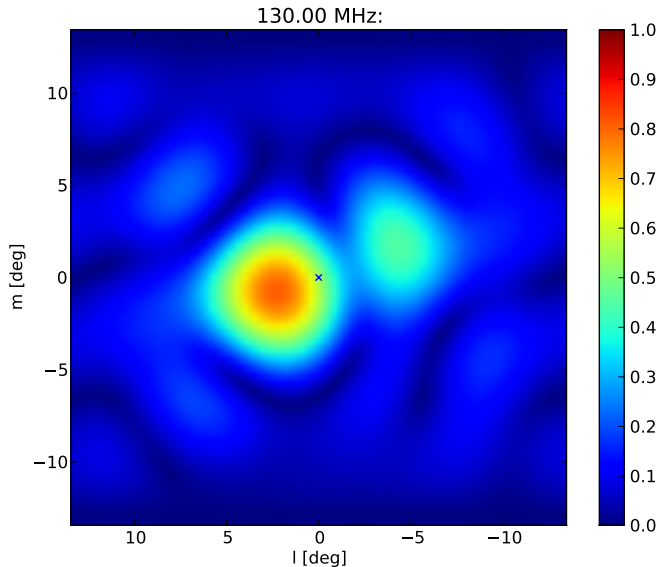


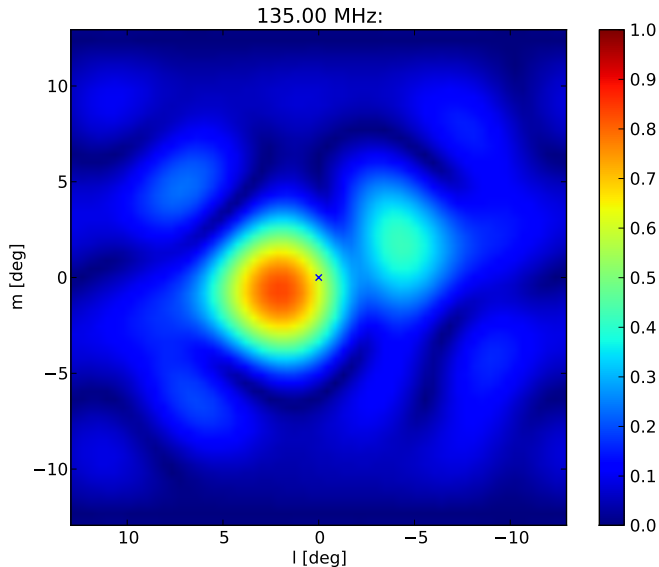


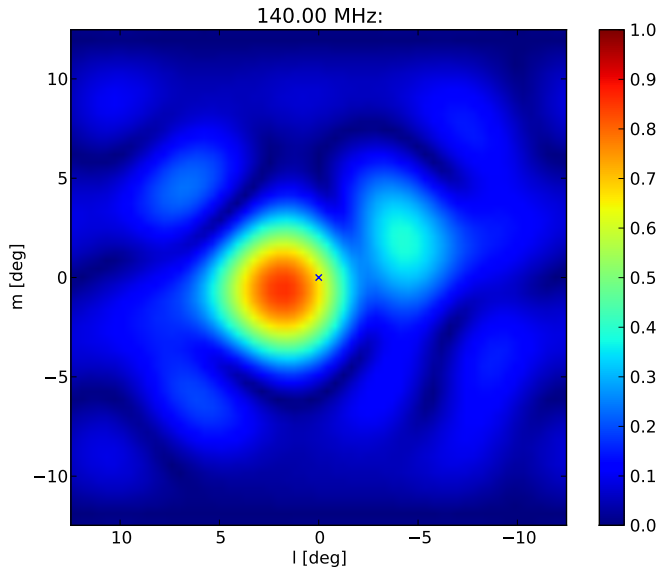
- 1 HBA sensitivity problems
- 2 One faulty RSP board
- 3 Two faulty RSP boards**
- 4 Two faulty RSP boards
- 5 What can holography do?
- 6 Now what?

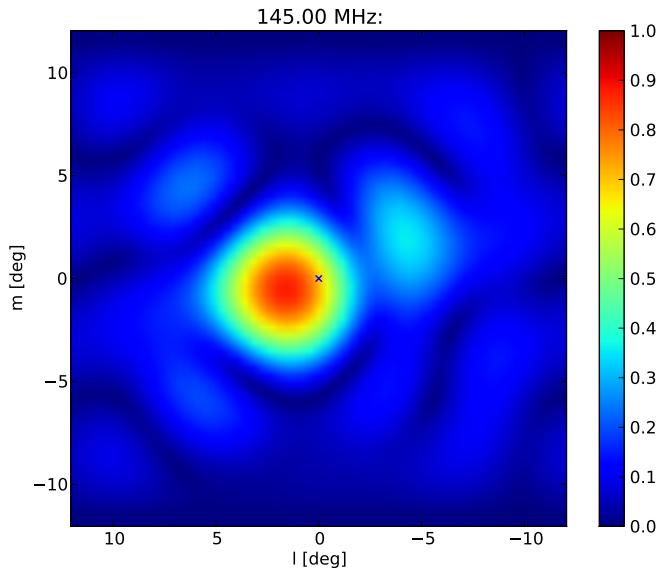


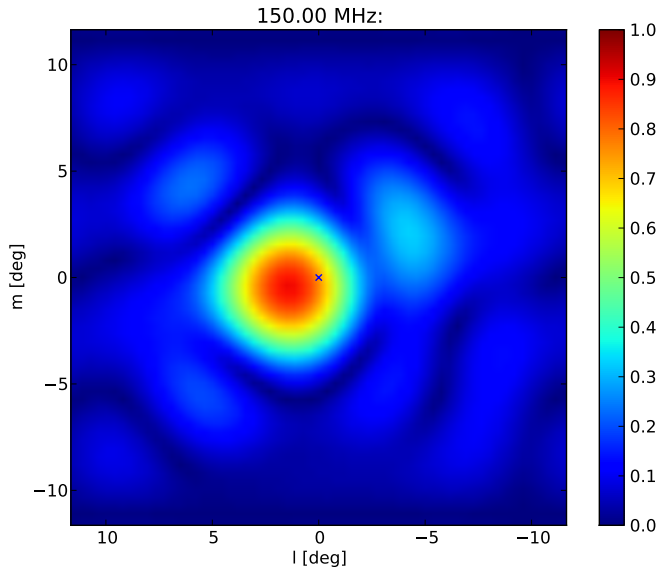


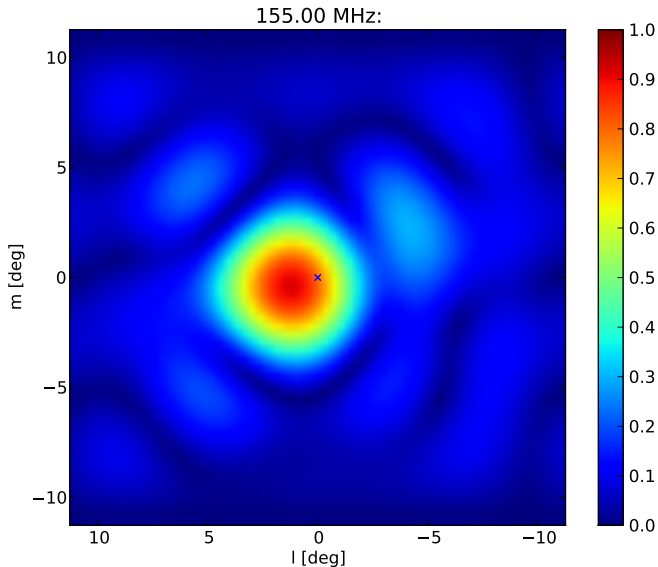


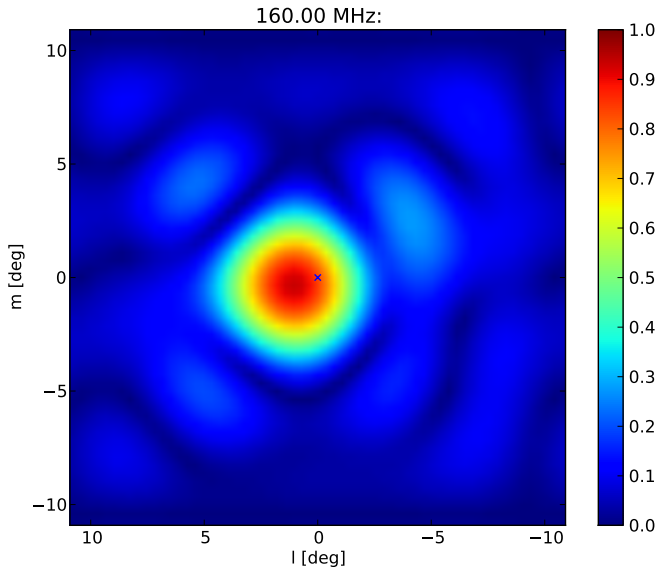


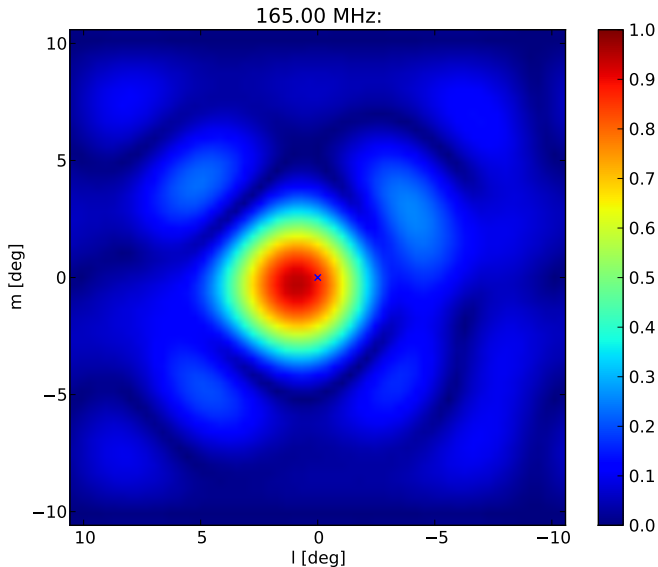


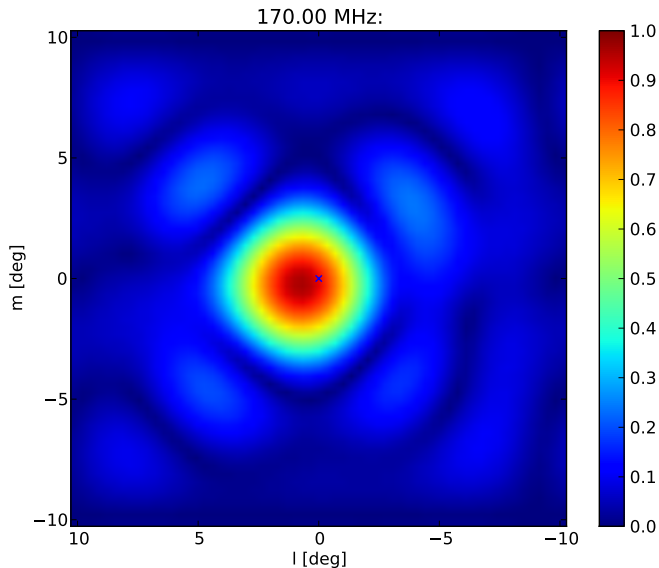


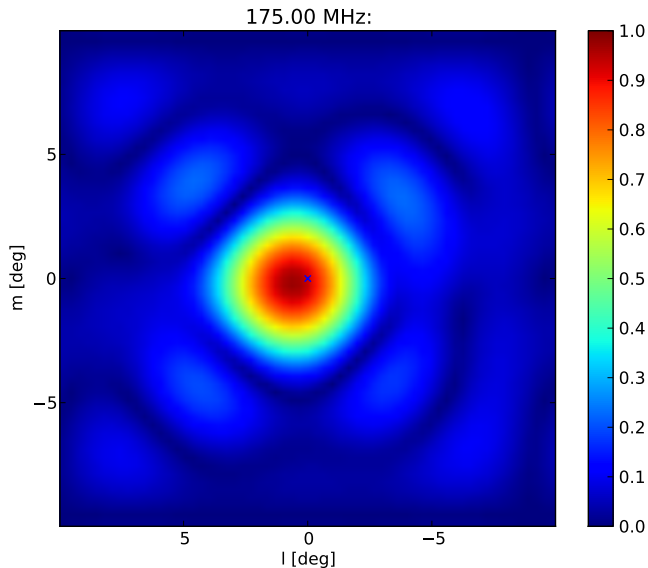




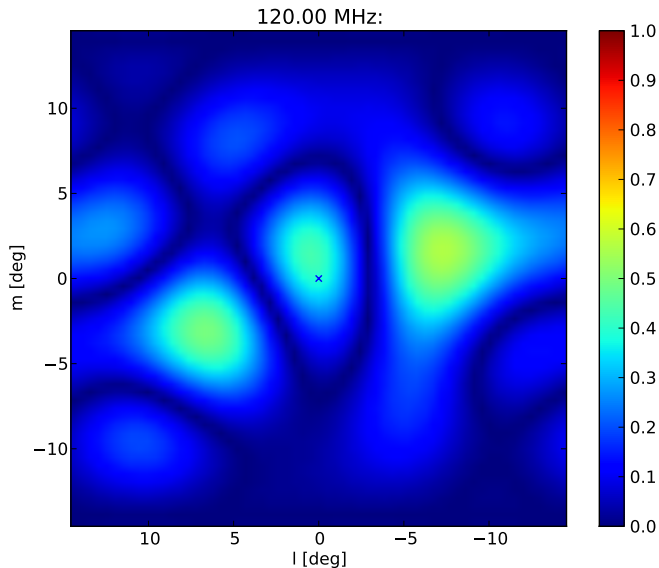


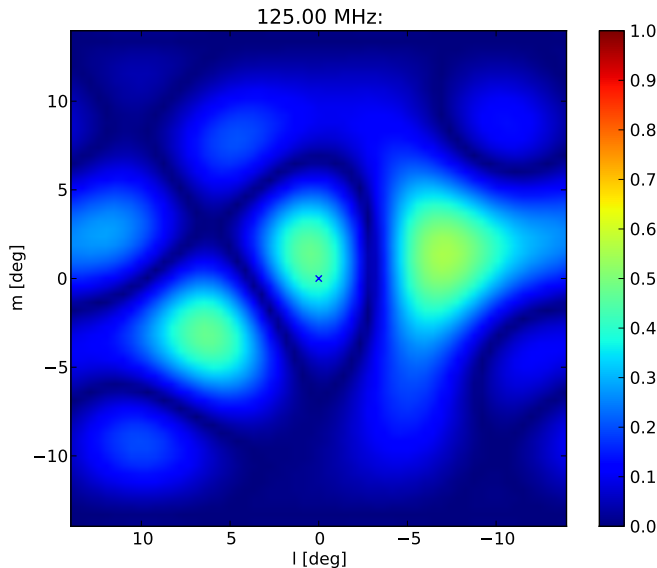


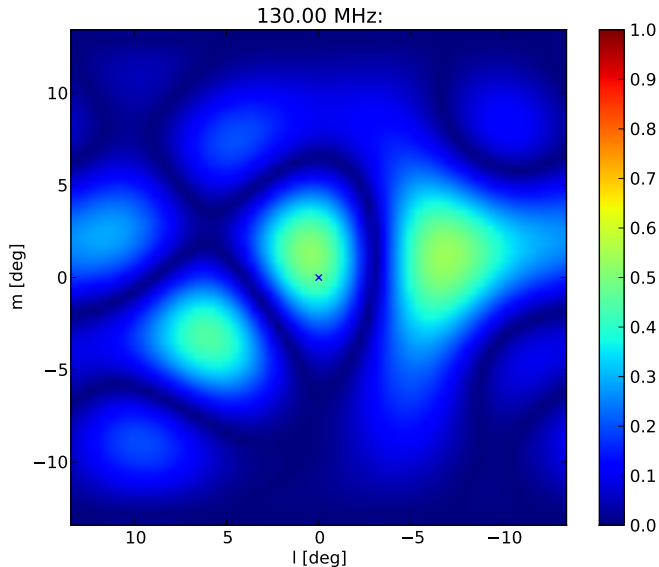


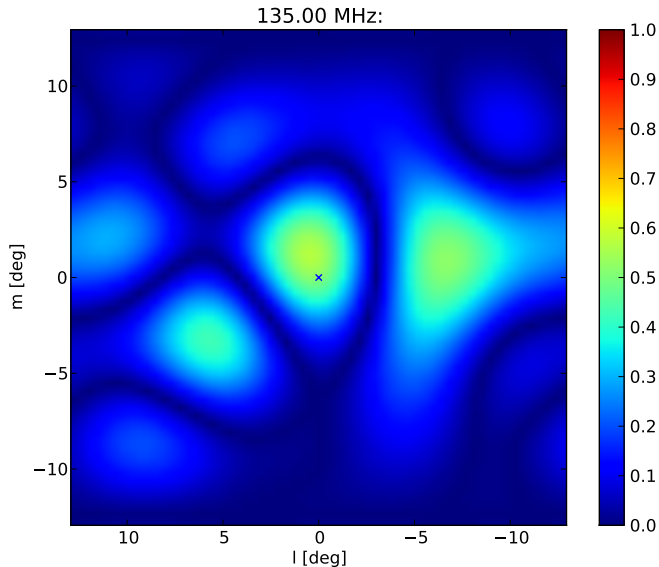


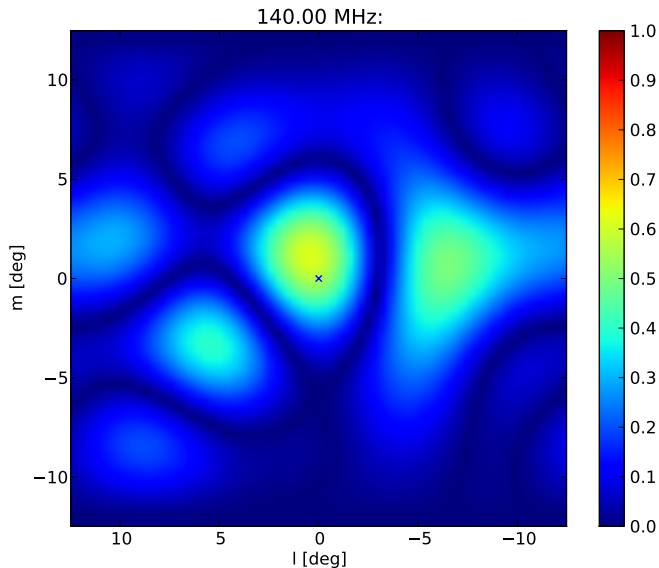
- 1 HBA sensitivity problems
- 2 One faulty RSP board
- 3 Two faulty RSP boards
- 4 Two faulty RSP boards**
- 5 What can holography do?
- 6 Now what?

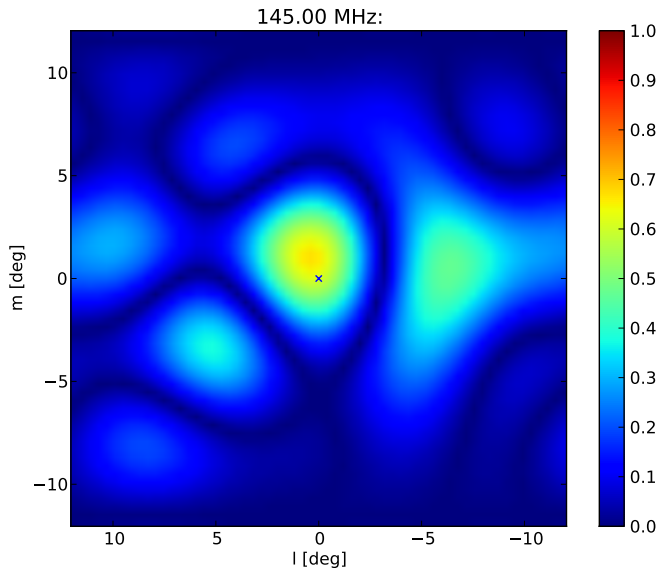


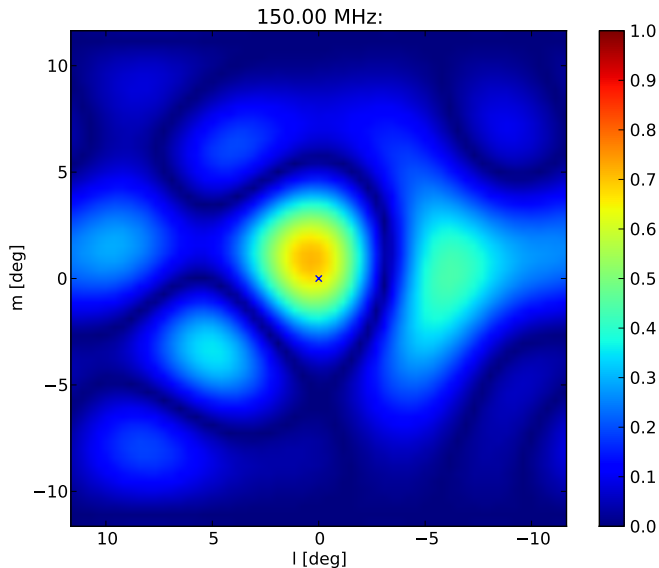


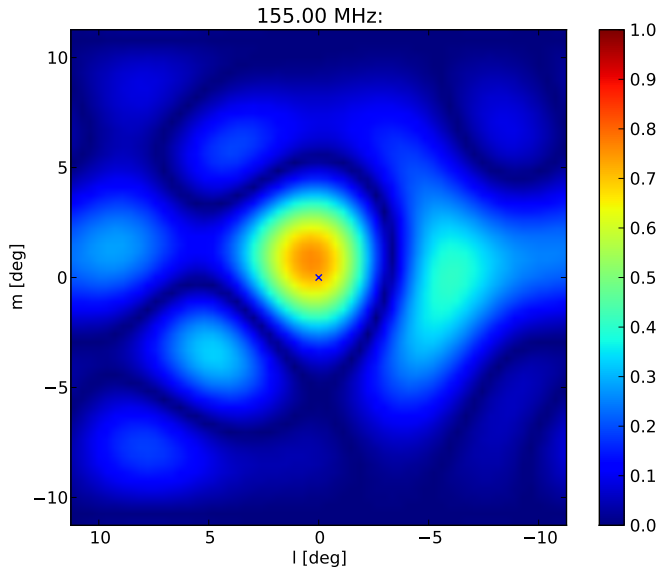


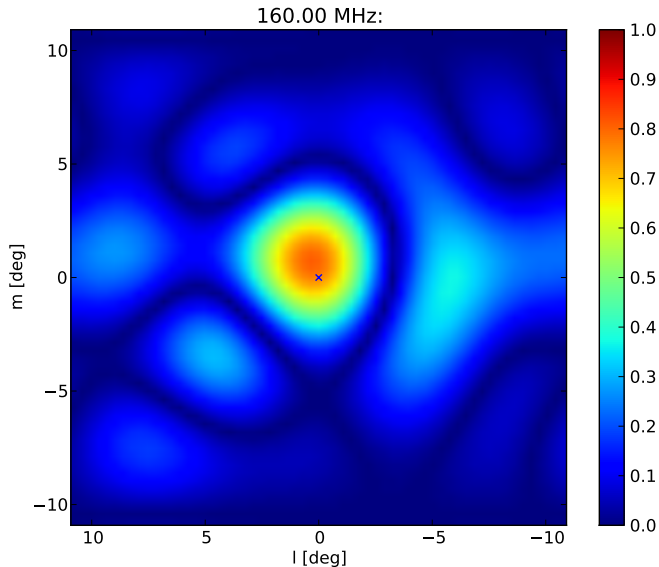


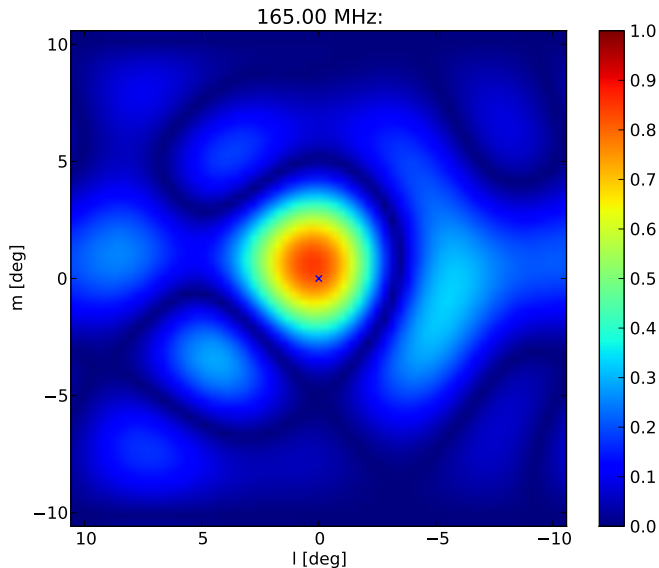


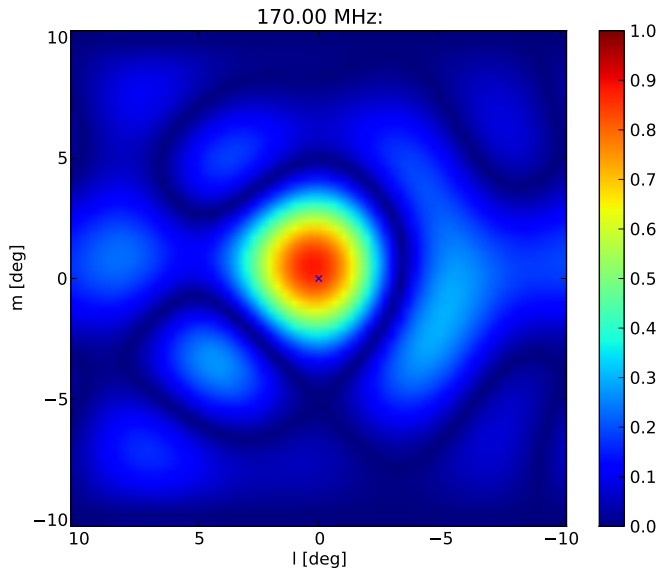


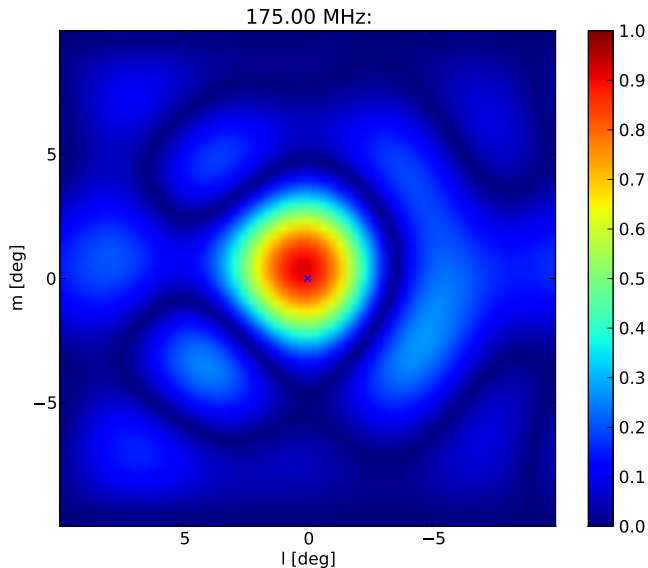






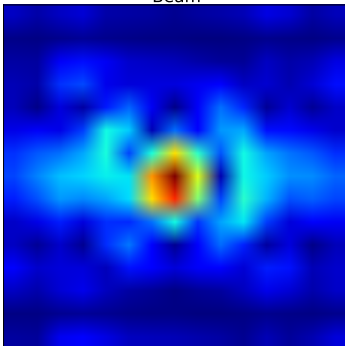




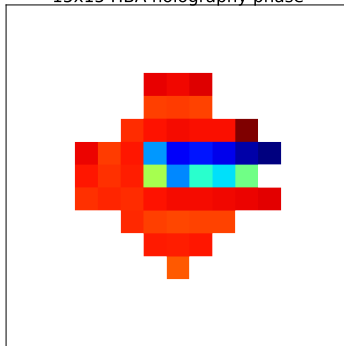


- 1 HBA sensitivity problems
- 2 One faulty RSP board
- 3 Two faulty RSP boards
- 4 Two faulty RSP boards
- 5 What can holography do?**
- 6 Now what?

Beam



15x15 HBA holography phase



- 1 HBA sensitivity problems
- 2 One faulty RSP board
- 3 Two faulty RSP boards
- 4 Two faulty RSP boards
- 5 What can holography do?
- 6 Now what?**

- Determine PPS delays per RSP board instead of per subrack.
- Rubidium pulse ill-defined? \Rightarrow exchange rubidiums.
- Attempt to detect issue at swlevel 2 initialization \Rightarrow retry until started up properly.
- Install modified superterp clock distribution boards elsewhere.
- Redetermine all mode 5, 6, and 7 calibration tables.
- Include PPS delay info in calibration table headers.
- Implement holography mode