



university of
 groningen

faculty of mathematics
 and natural sciences

kapteyn astronomical
 institute



ASTRON

Netherlands Institute for Radio Astronomy

AWimager - recent results on polarimetry for the Elais-N1 field

Vibor Jelić

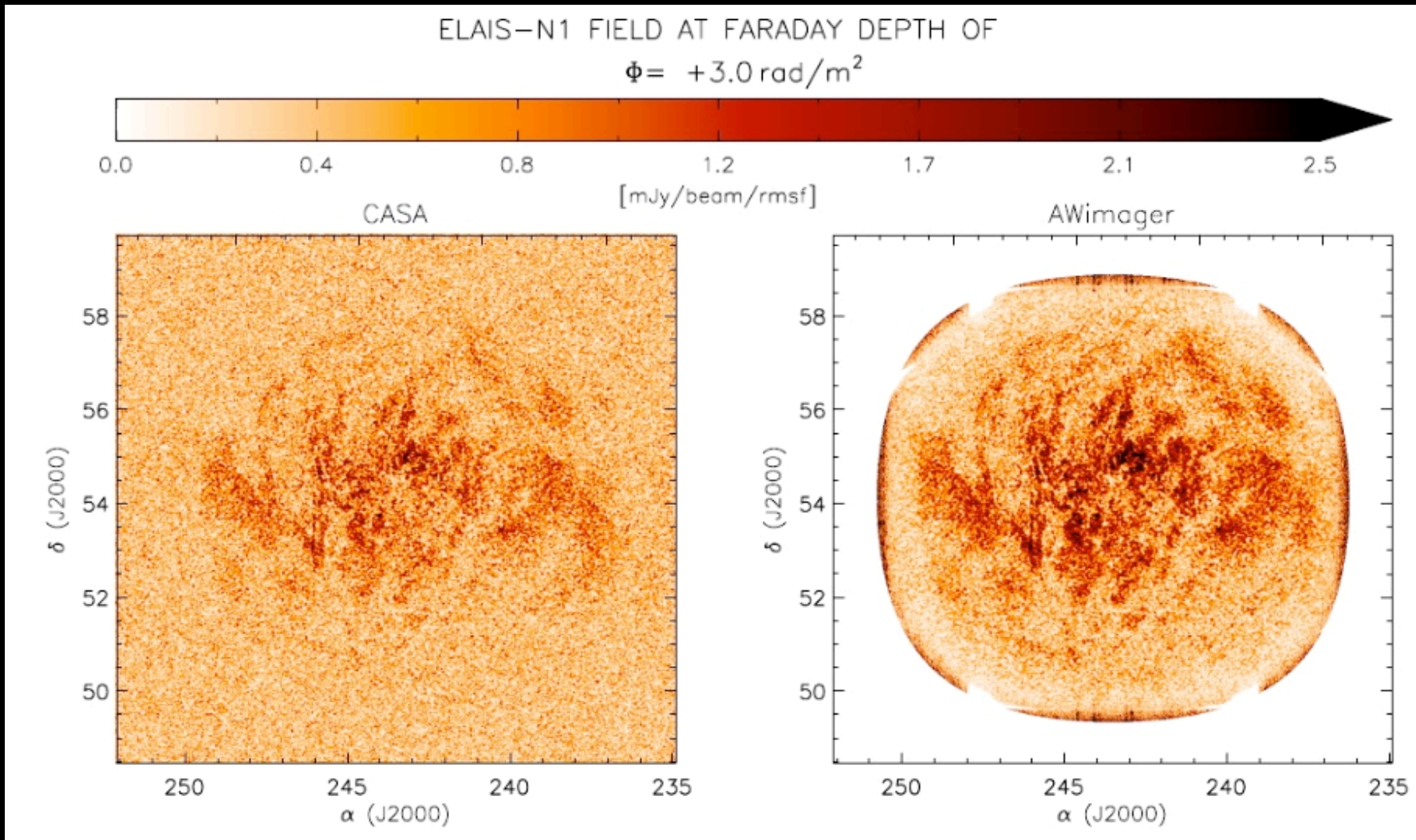


LOFAR-EoR experiment: Elais N1 field

- LOFAR – HBA observation @ 138 – 185 MHz
July 2012, 7h, 244 sb, CR+RS stations (55)
 - NDPPP avg. of CORRECTED DATA to *1 channel* and *10s*
 - BBS (*solve, correct*) with the skymodel based on 30 sources
 - NDPPP flagging of CORRECTED DATA column
 - ionospheric RM correction
 - Imaged with CASA and AWimager

CASA and AWimager have opposite sign definition
of the robust parameter !

LOFAR-EoR experiment: Elais N1 field



LOFAR-EoR experiment: Elais N1 field

