

# Status LC0\_012:

## *Using LOFAR for detailed studies of AGN and AGN physics*

Proposal part of the survey group

➔ targeted nearby known radio sources: study of the energetics and life-cycle

3CR radio galaxies + Virgo A

double-double/giants

relics

radio in X-ray cavities

compact radio sources (longbaselines group)

➔ spectral index

➔ study of relics and restarted (targeted and serendipitous) and double-double radio galaxies

# Targets

Targets for LCO\_012 Cycle0 LOFAR

Using LOFAR for detailed studies of AGN, and AGN physics

## Who is working on the data:

Judith Croston, Volker Heesen, Jeremy Harwood  
Aleksandar Shulevski, Emanuela Orru`, RM  
De Gasperin, Rafferty/Birzan  
Hardcastle + longbaseline group

|                   | HBA<br>obs | HBA<br>comp | LBA<br>obs | LBA<br>comp | Pre-processing | Leading      |   |
|-------------------|------------|-------------|------------|-------------|----------------|--------------|---|
| 3C31              |            | 10          | 30         | 10          | 15             | Southampton? | Nearby 3CR - Croston, Volker Heesen               |
| 3C223             |            | 10          | 30         | 10          | 15             |              | Croston+Jeremy Harwood+Orru`                      |
| 3C452             |            | 10          | 30         | 10          | 15             |              | Croston+Jeremy Harwood                            |
| B1834             |            | 10          | 30         | 10          | 15             | Nijmegen?    | DDRG - Orru`+                                     |
| 3C35              |            | 10          | 30         | 10          | 15             |              | Orru' (polariz.)+Shulevski                        |
| 4C33.33           |            | 10          | 30         | 10          | 15             |              | Giant RG Jamrozy+                                 |
| 3C247             |            | 10          | 30         |             |                |              | LongBaselines group, Hardcastle et al.            |
| 3C41              |            | 10          | 30         |             |                |              | LongBaselines group, Hardcastle et al.            |
| M87               |            | 8           | 24         | 8           | 12             |              | De Gasperin+                                      |
| 3C48              |            |             |            | 10          | 15             | Amsterdam?   | RRL group - Oonk+                                 |
| Hydra A           |            | 6           | 18         | 6           | 9              |              | Cavities - Rafferty, Wise+                        |
| Hercules A        |            | 6           | 18         |             |                |              | Cavities: Birzan+                                 |
| VLSS J1431.8+1331 |            | 8           | 24         | 8           | 30             |              | Relics - Morganti, Shulevski, Kunert-Bajraszewska |
| Cygnus A          |            | 10          | 30         |             |                |              | McKean+   |
| <b>Total</b>      |            | <b>118</b>  | <b>354</b> | <b>92</b>   | <b>156</b>     |              |   |

**Total observing** 210 **Alloc** 210  
**Total computing** 510 **373**

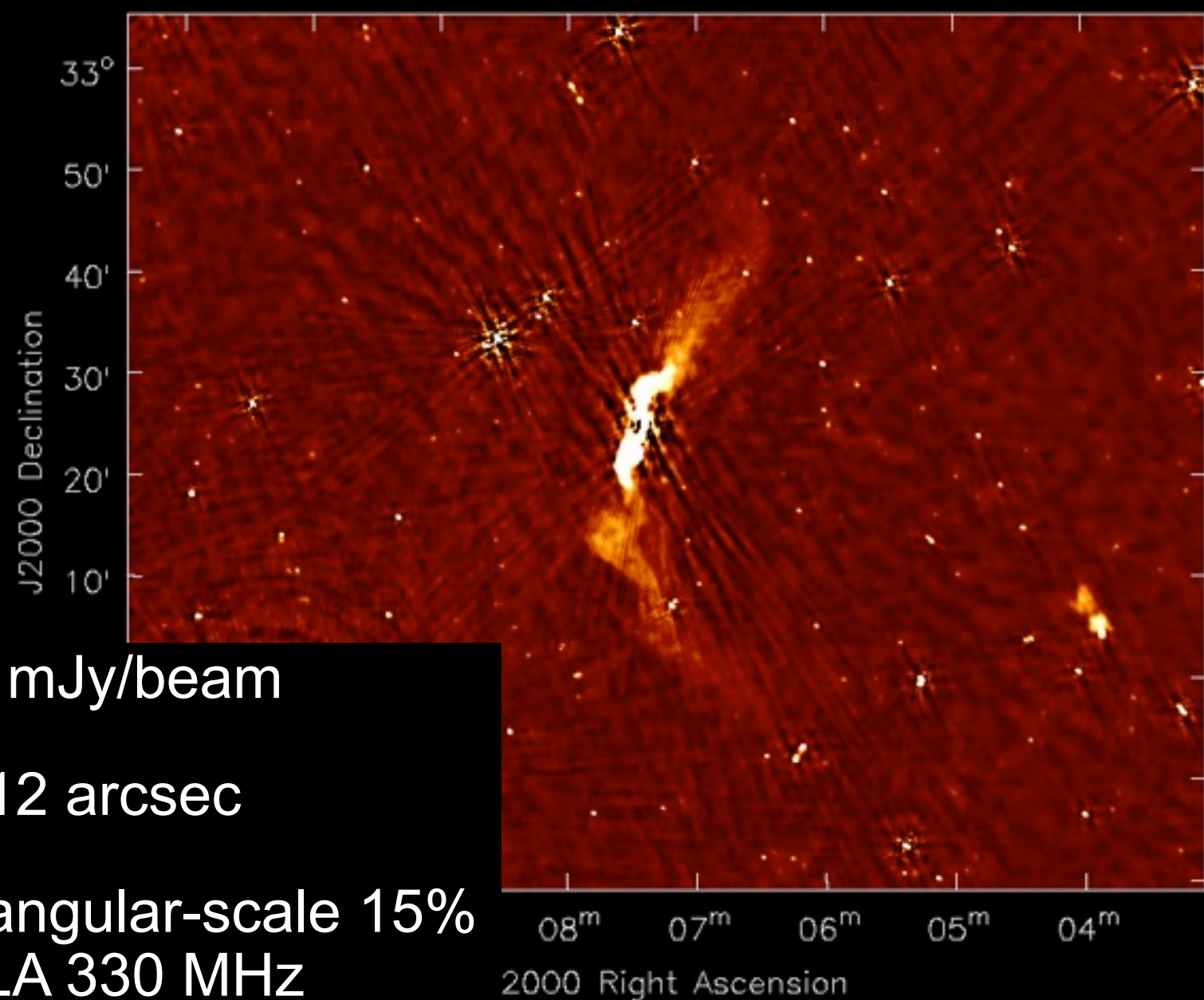
- HBA observations interleaved calibrator-sources (2-11min). Quite a lot of time spent on calibrator → important to know stability of the system and accurate flux scale: ongoing tests
- LBA: part of the band on a calibrator (3C196, 3C295...) - Problem with many of the LBA observations (demixing): reobserved a few weeks ago => work on LBA data is lagging behind.
- We did not request night time → investigating the effect of this, so far it seems to be not too bad for HBA but we need to check LBA!
- Pre-processing done initially by pipeline → but the “manual” calibration seems to work better.
- Raw data kept only for Judith’s sources and moved to Southampton
- Other datasets: kept the pre-processed, averaged data => we are moving most of the datasets to the cluster @ASTRON *FLITS* (10 nodes, 200 Tb).

# 3C31 LOFAR observations

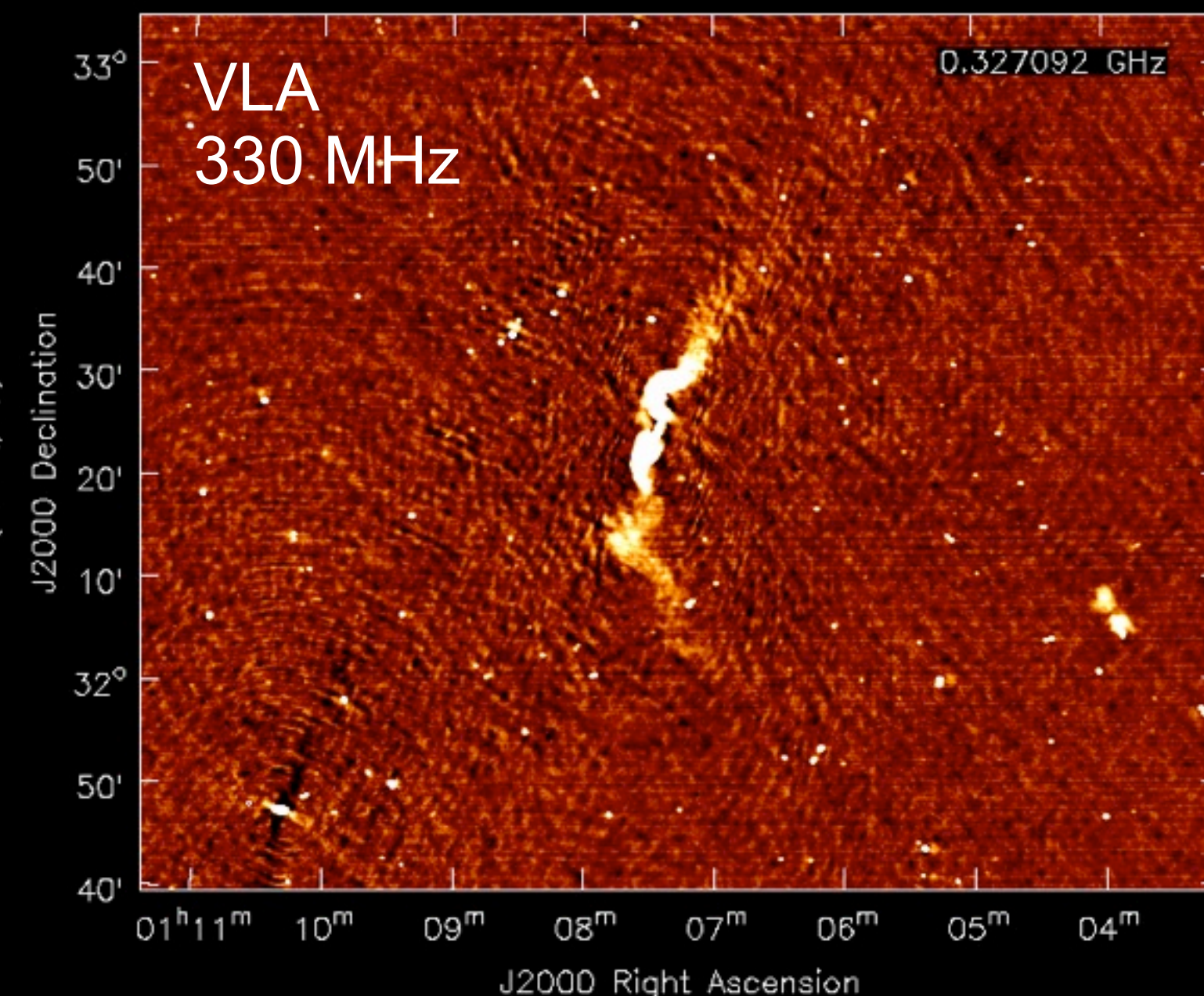
*Provided by Judith Croston and Volker Heesen*

- 10 hrs observing time in HBA
- 3C48 and 3C196 as primary calibrators
- HBA data pre-processed by ASTRON
- Initial NDPPP
- Calibrate calibrator and transfer solutions
- Combine sub-bands
- Phase-only calibration on each band (*starting model VLSS*) =>  
pipeline work in Southampton by Adam Stewart
- Image with CASA or awimager

LOFAR  
144 MHz  
(244 SBs)

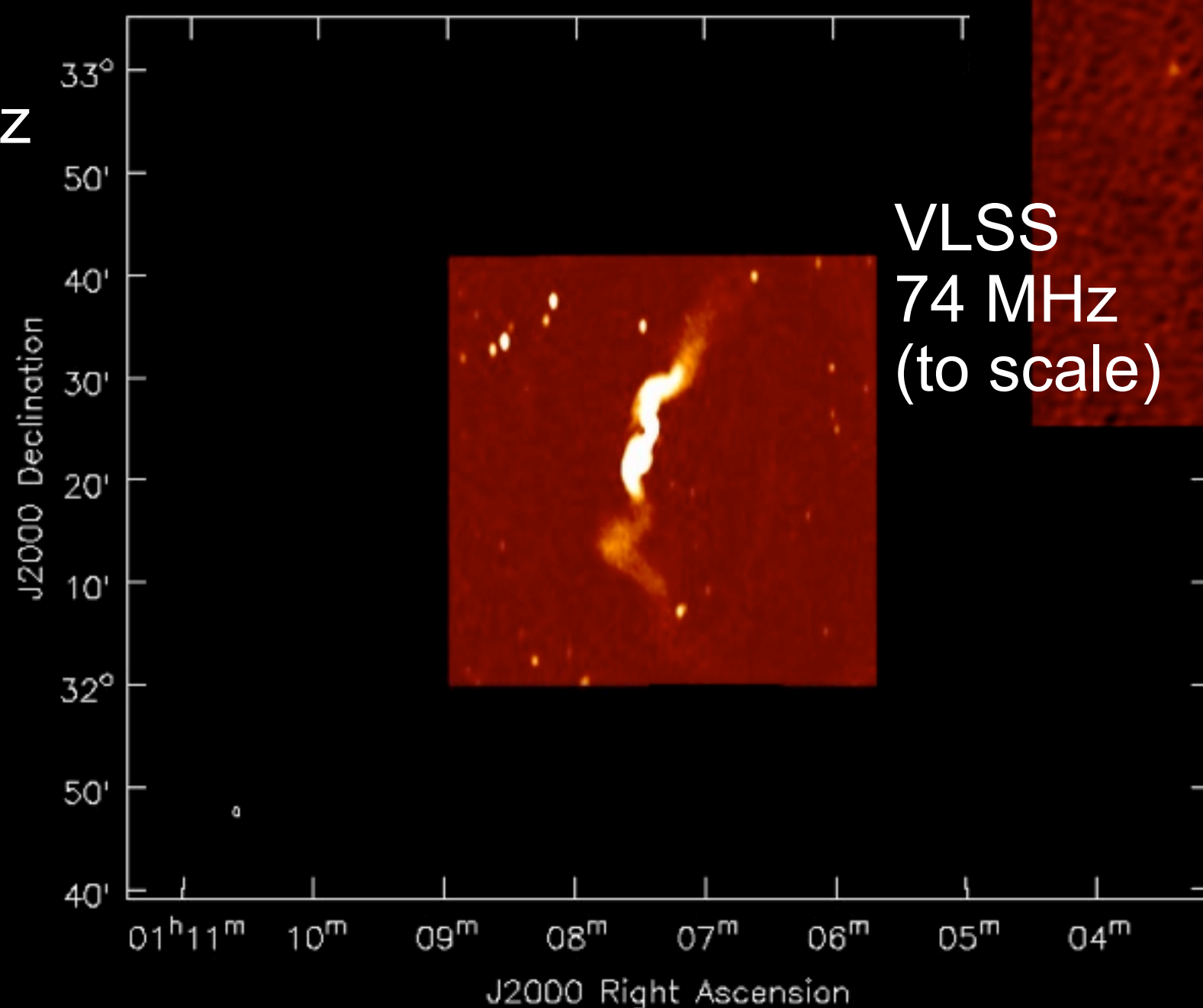


VLA  
330 MHz

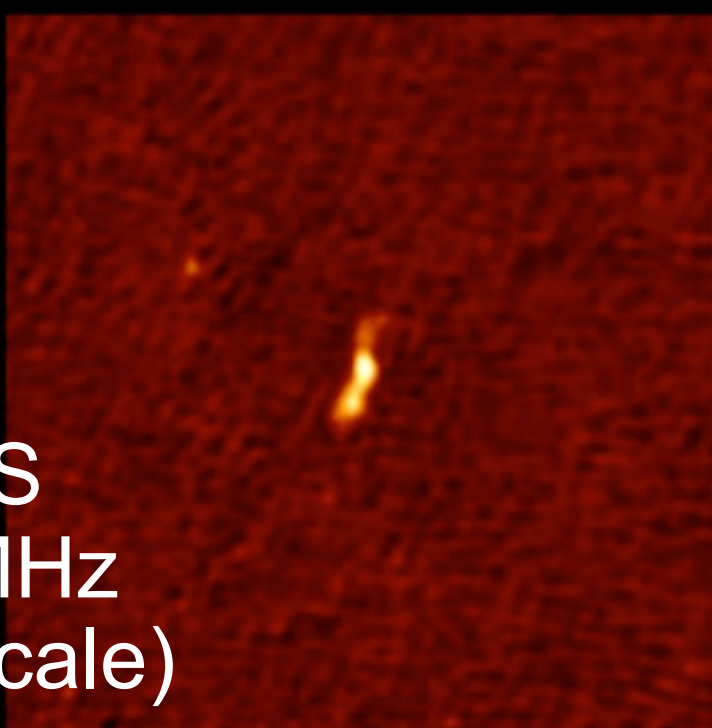


- Noise rms = 0.7 mJy/beam
- Resolution: 17x12 arcsec
- LOFAR largest-angular-scale 15% larger than at VLA 330 MHz

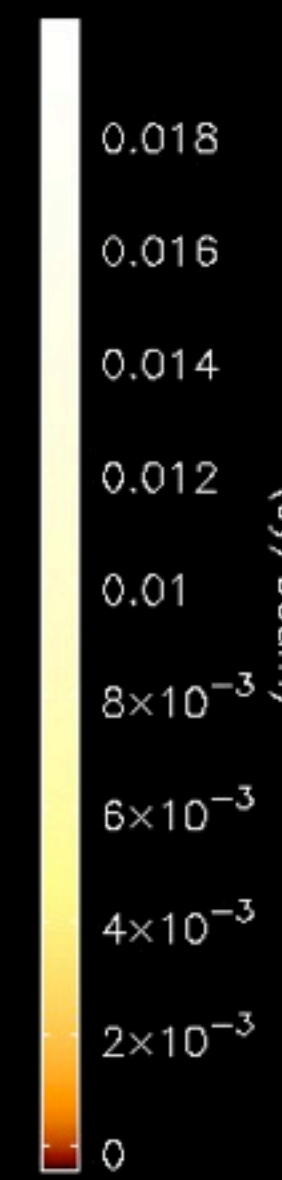
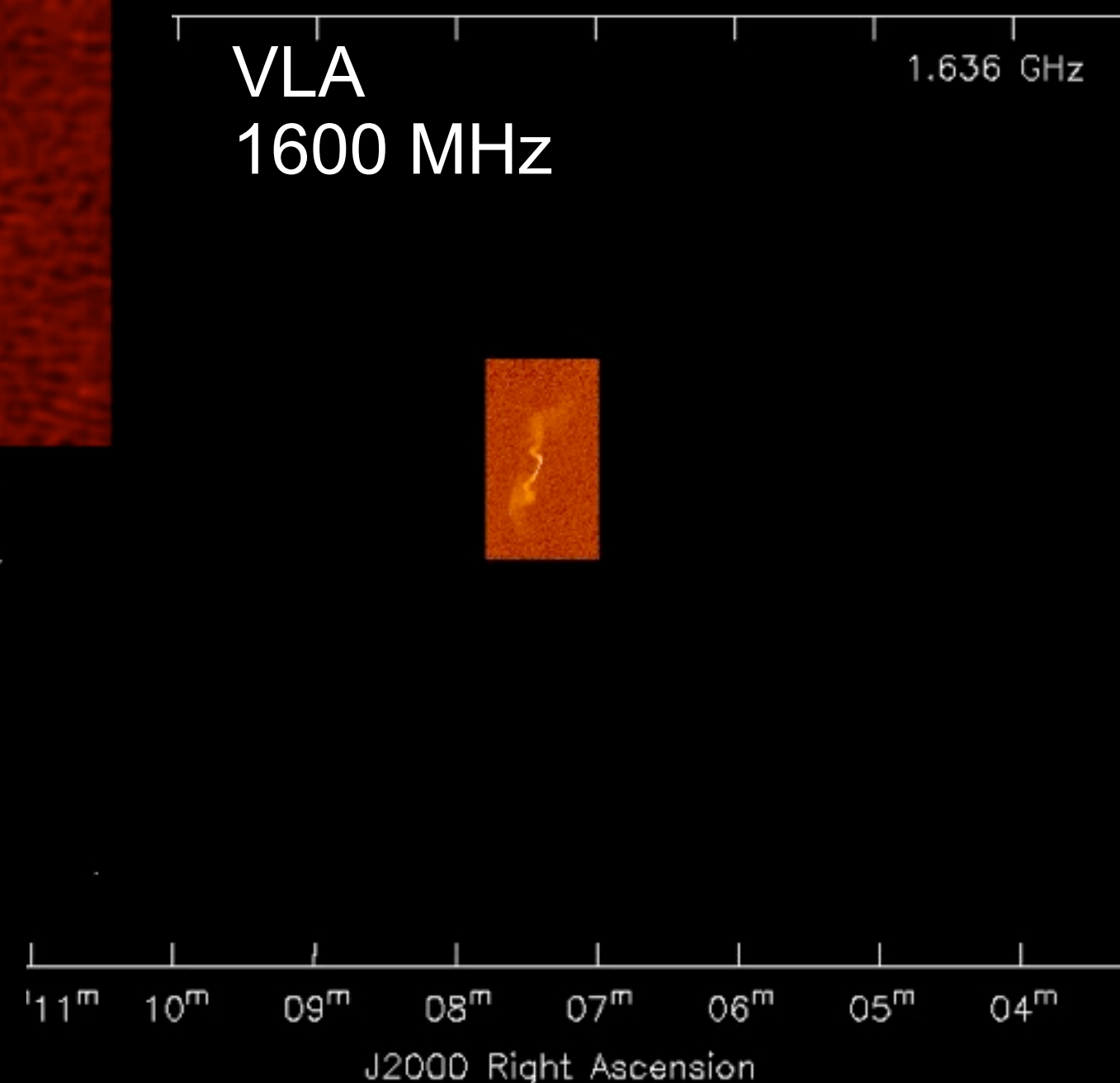
WSRT  
608 MHz



VLSS  
74 MHz  
(to scale)



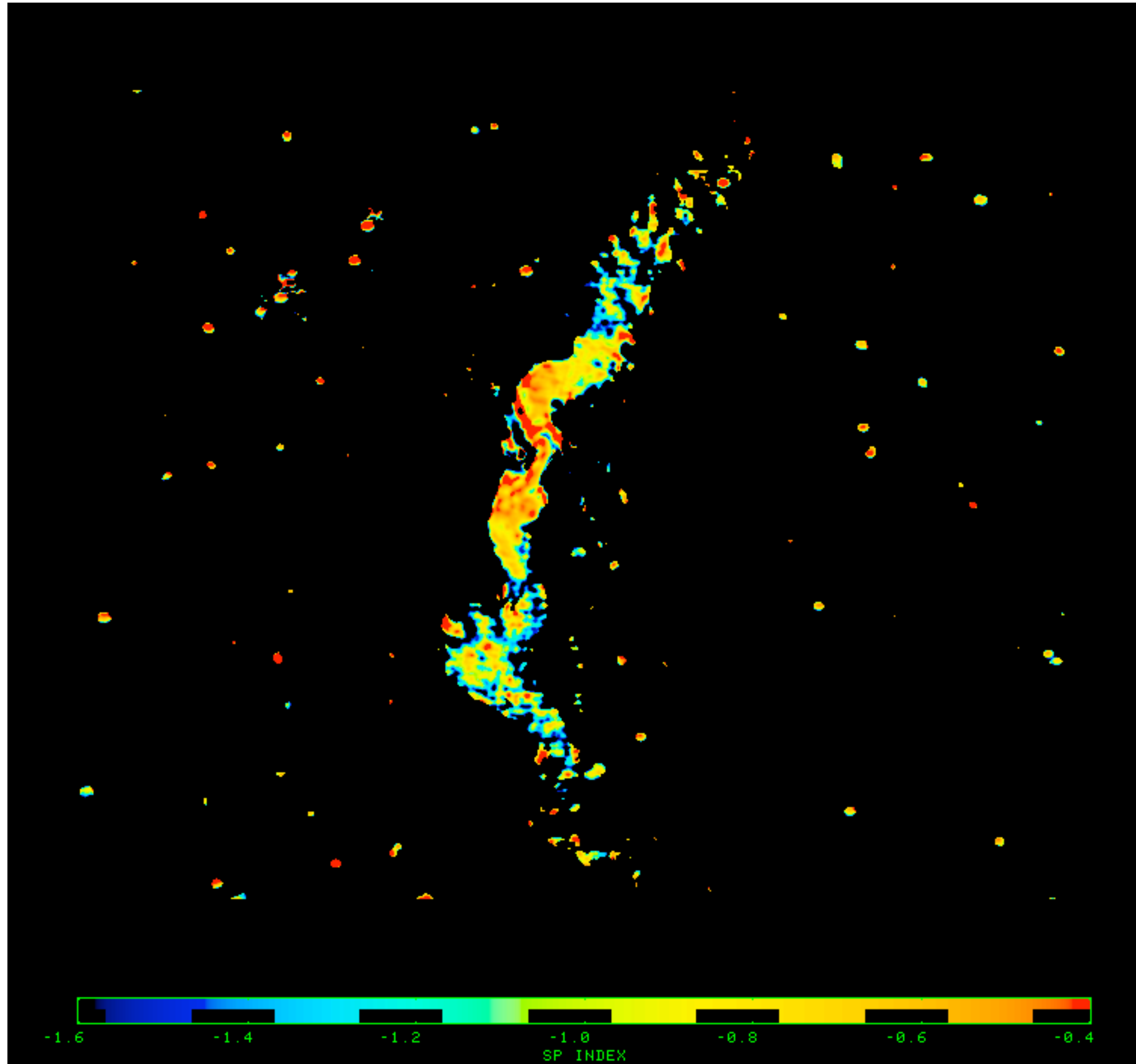
VLA  
1600 MHz



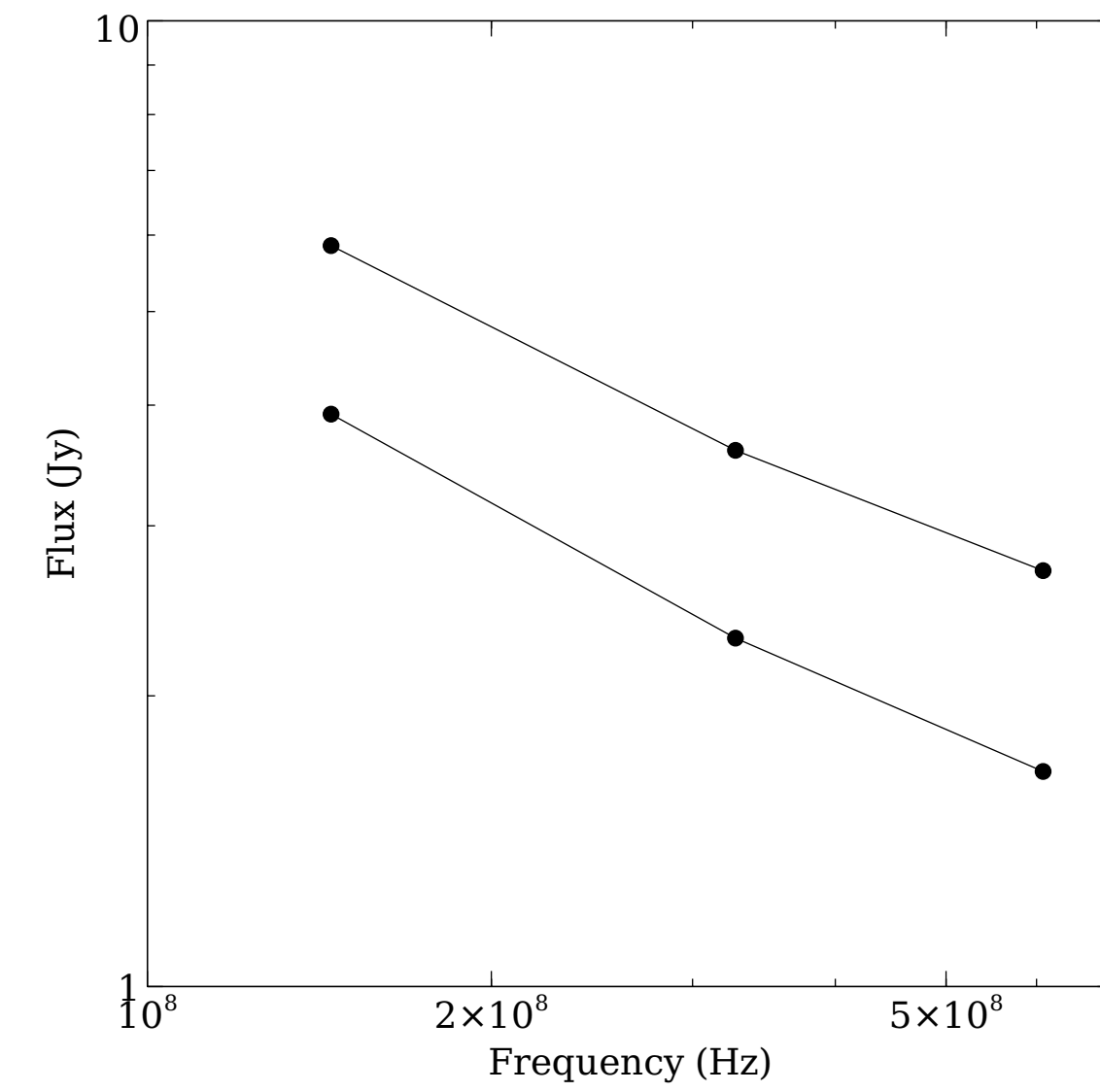
- Imaged with CASA clean
- Peak flux density: 5.2 Jy
- Noise rms = 0.7 mJy/beam
- Resolution: 17x12 arcsec
- S/N = 7400
- LOFAR largest-angular-scale 15% larger than at VLA 330 MHz

# 3C31 spectral index

Radio spectral index  
144 – 330 MHz

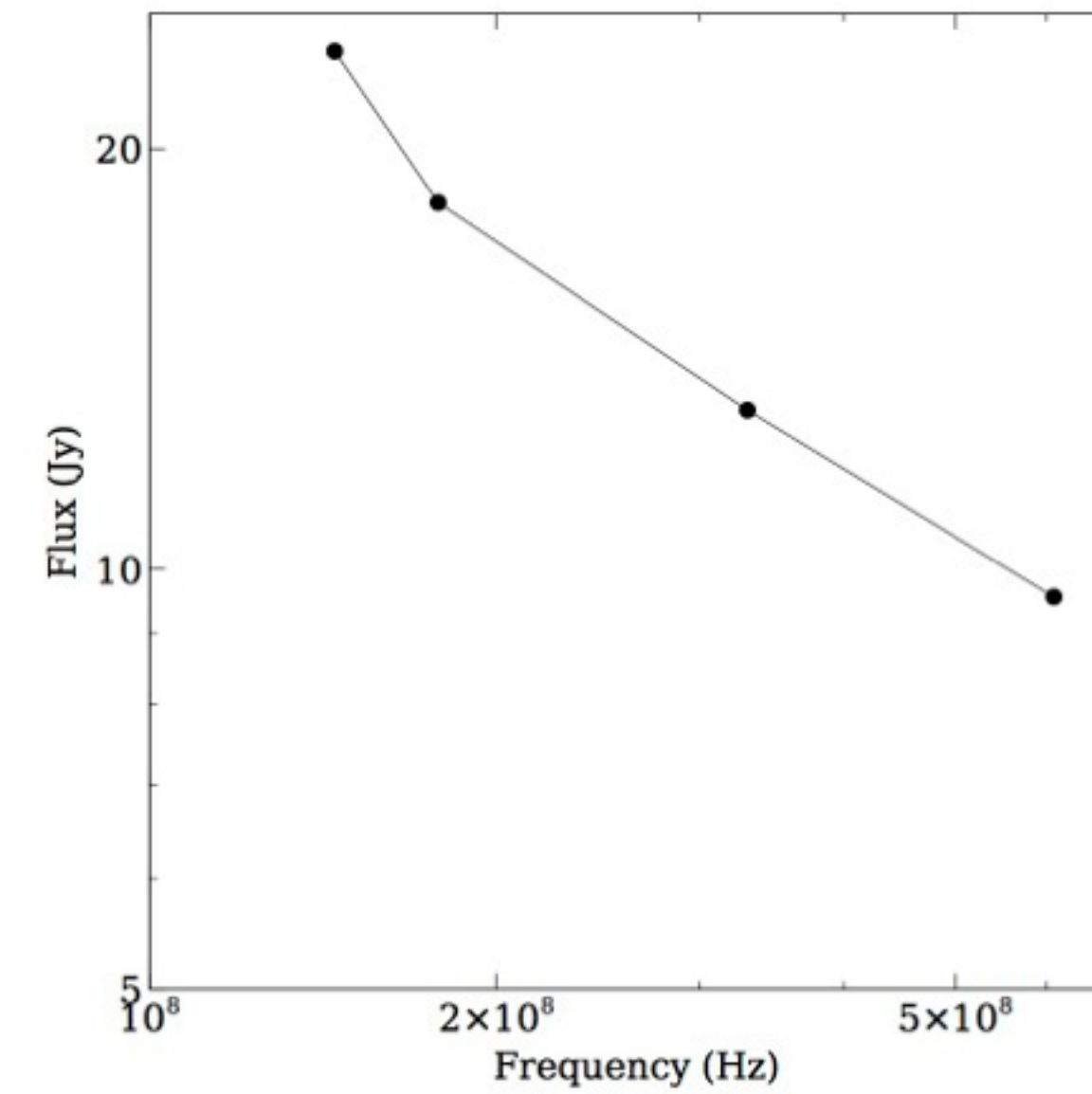


145 MHz HBA, 330 MHz VLA and 608 MHz Westerbork



Two large regions of the inner lobes, SI~0.55

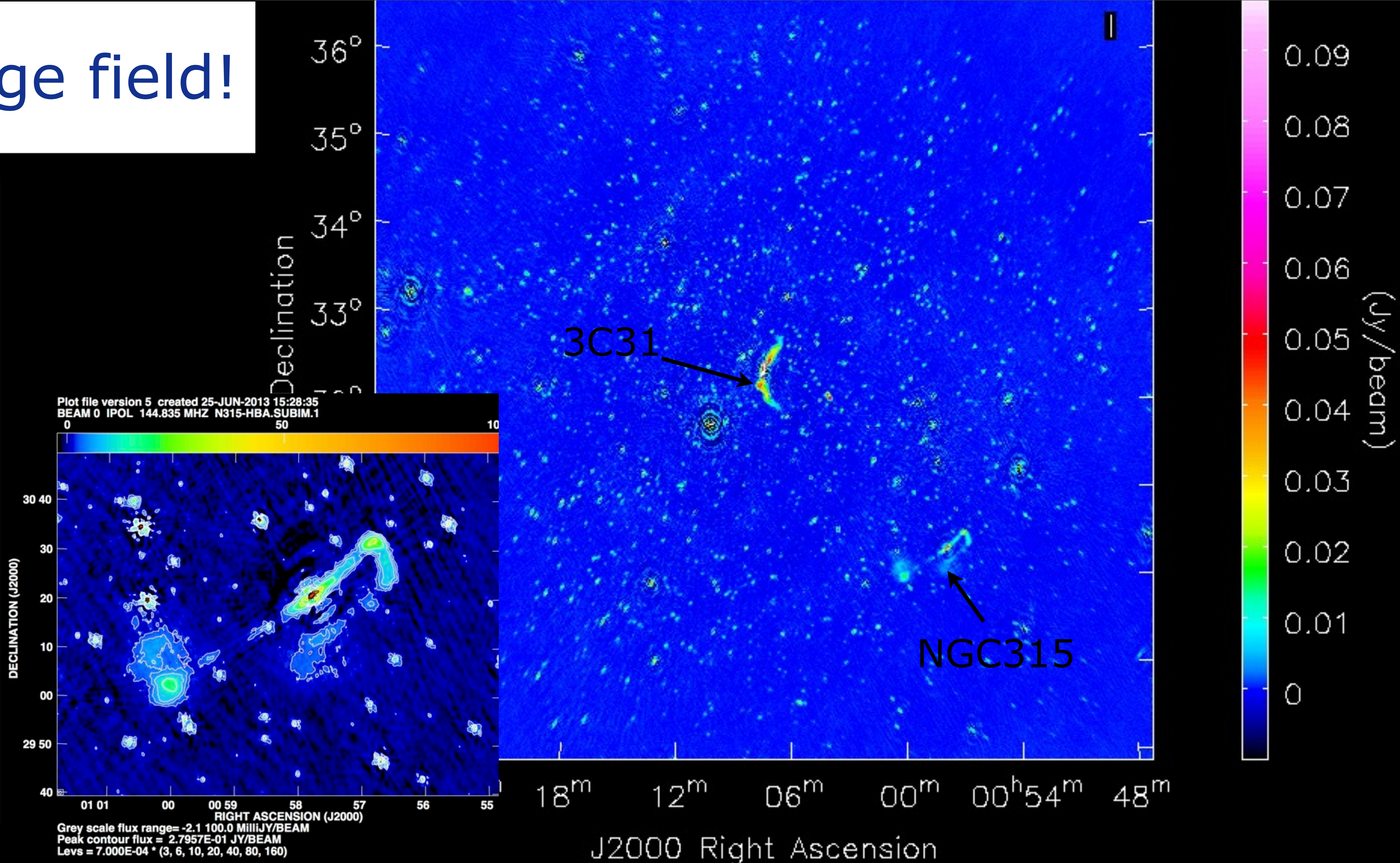
flux scale looks reliable to within at least ~15%



Integrated

# Large field!

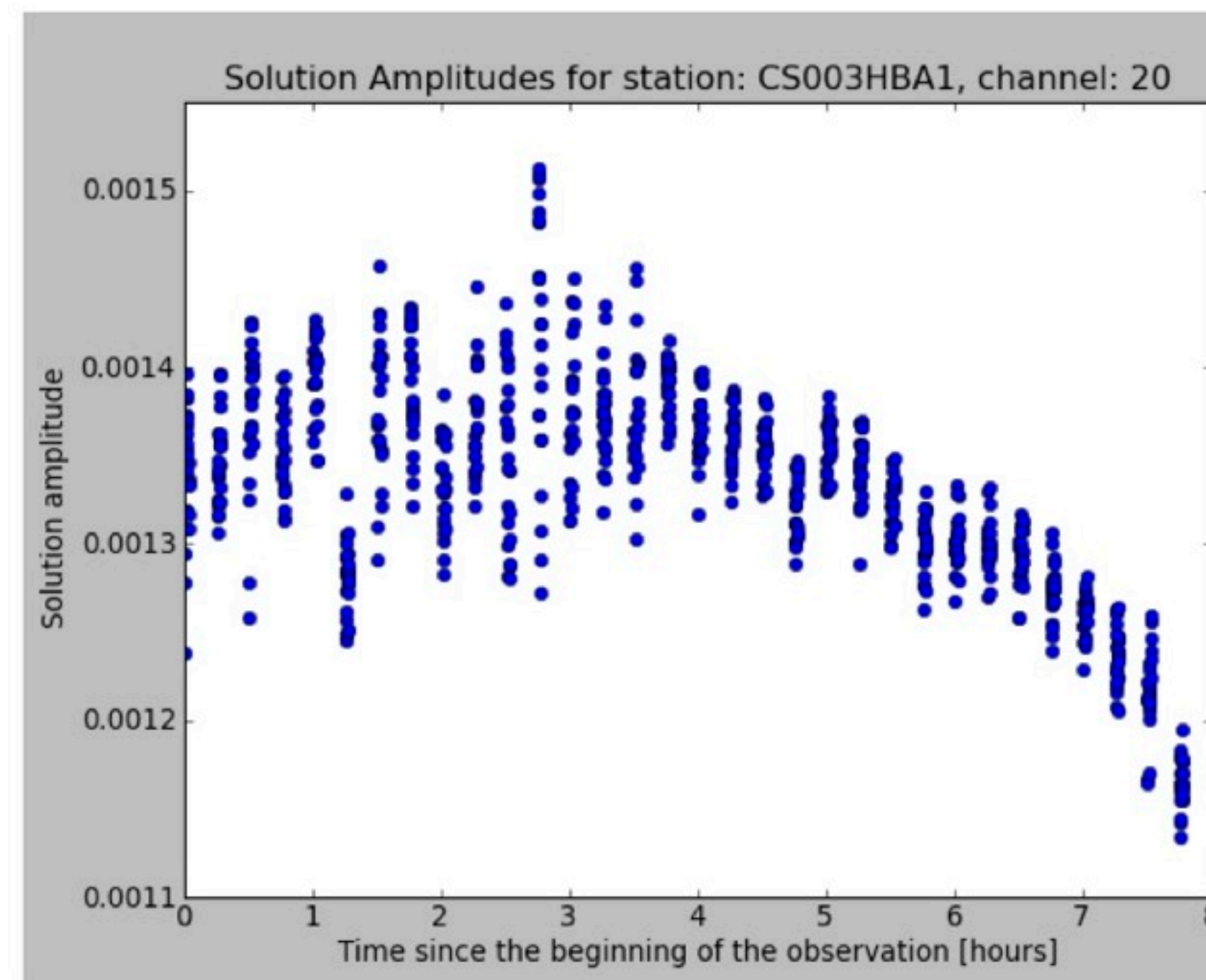
Image baselines 20km - 244 SB  
V. Heesen





# Relic VLSS 1431+1331 HBA - Aleksandar Shulevski (selected from van Weeren et al. sample)

Calibrator **amplitude** solutions  
over the observing run.



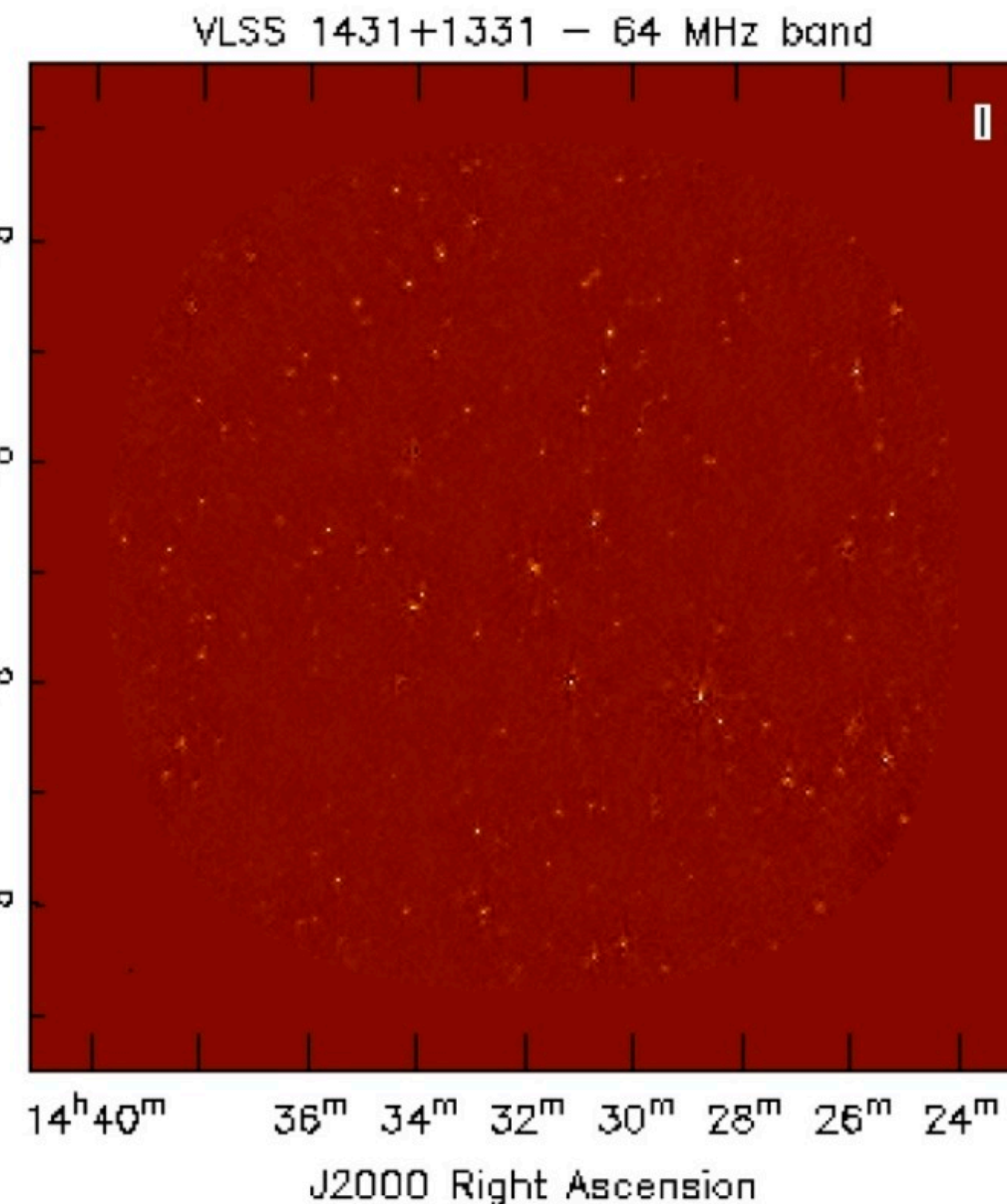
Processing strategy:

LOFAR Pipeline:

- calibrator scan A&P calibration
- Solution transfer to target

Our pipeline:

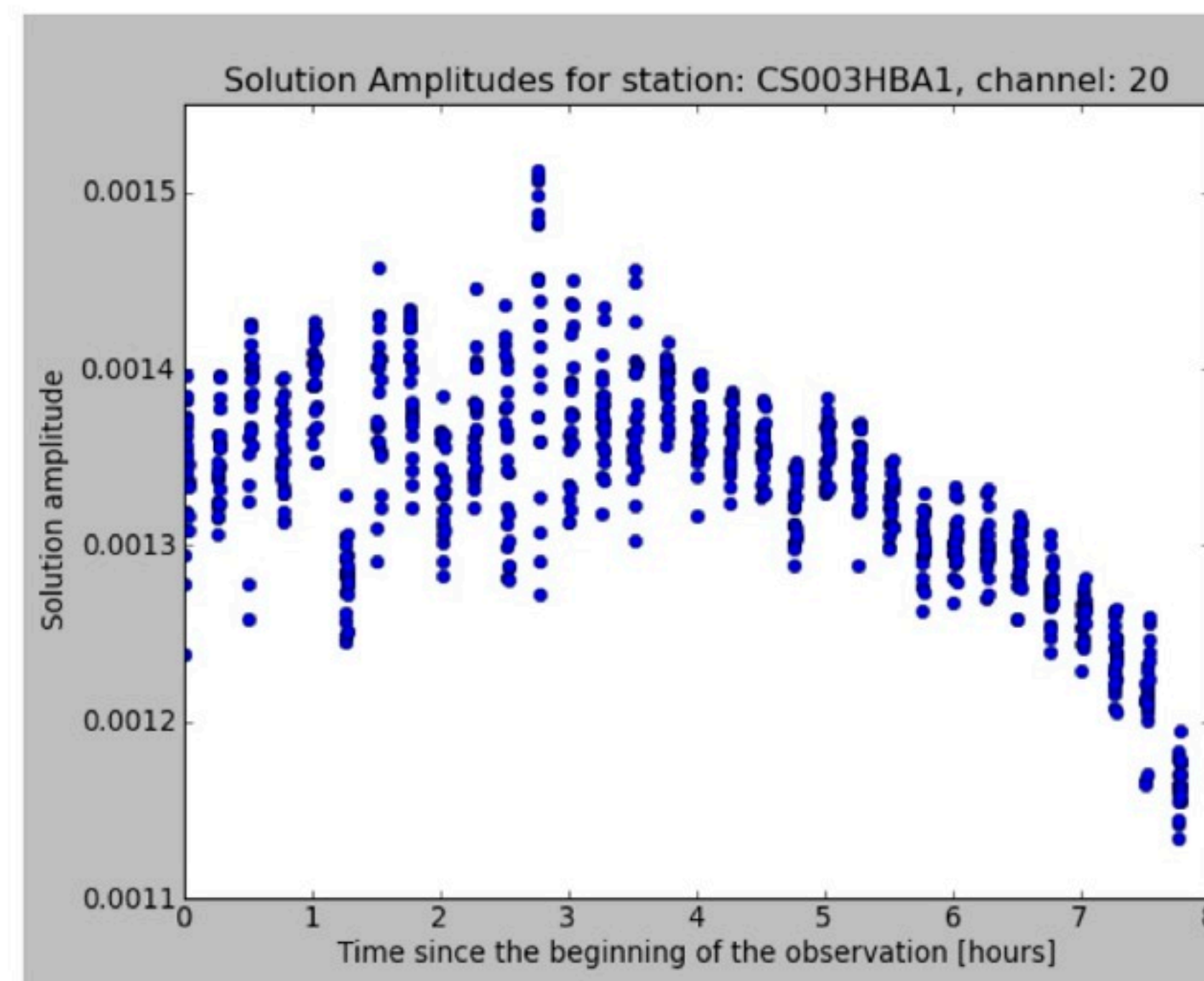
- Concatenate data in freq. and time, remove A-team, flag RFI / outliers.
- Phase calibration on target, VLSS initial model (Sagecal, selfcal)
- AW imaging



11" resolution, noise: 1.89 mJy / beam

# Relic VLSS 1431+1331 HBA - Aleksandar Shulevski (selected from van Weeren et al. sample)

Calibrator **amplitude** solutions  
over the observing run.



Processing strategy:

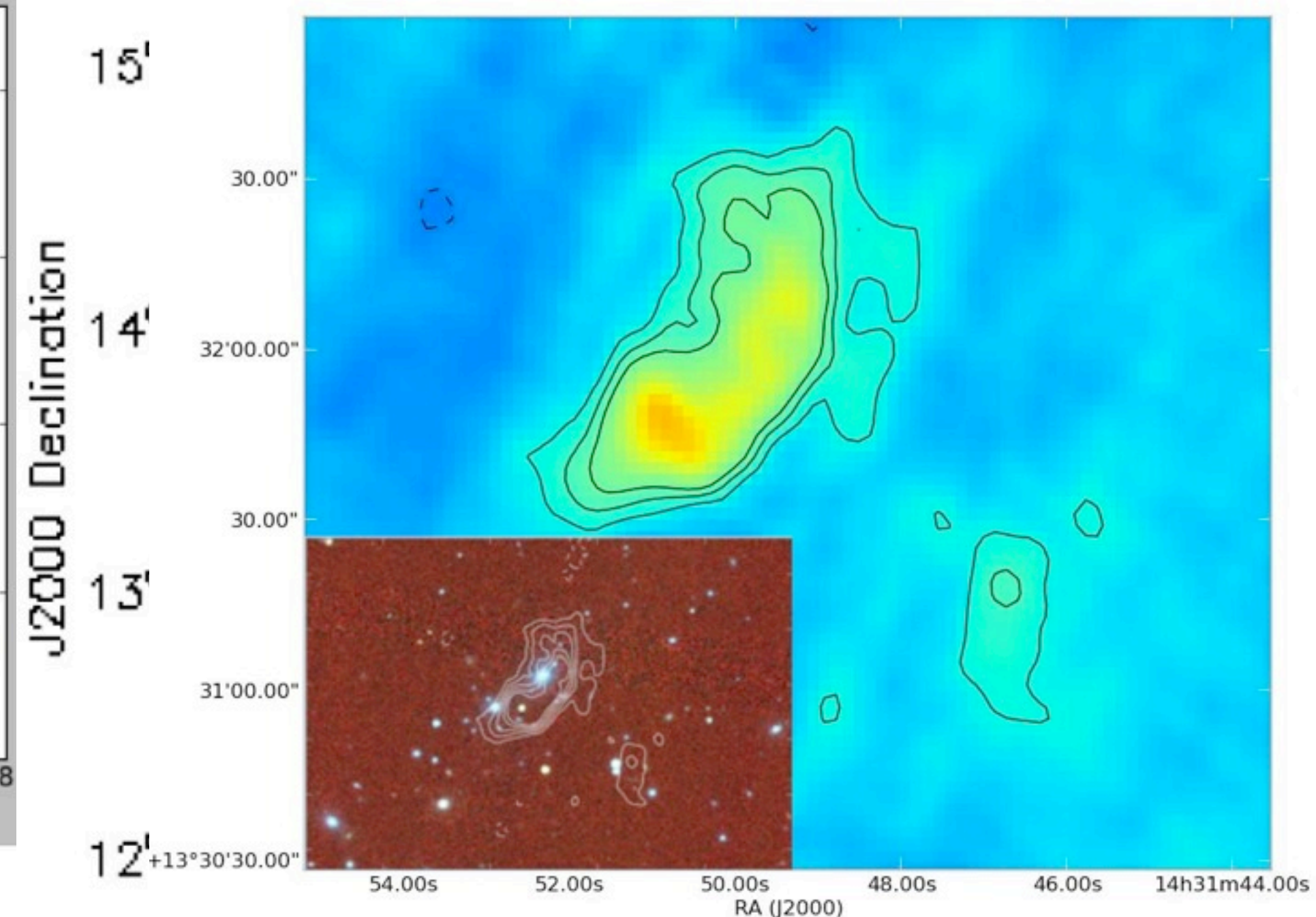
LOFAR Pipeline:

- calibrator scan A&P calibration
- Solution transfer to target

Our pipeline:

- Concatenate data in freq. and time, remove A-team, flag RFI / outliers.
- Phase calibration on target, VLSS initial model (Sagecal, selfcal)
- AW imaging

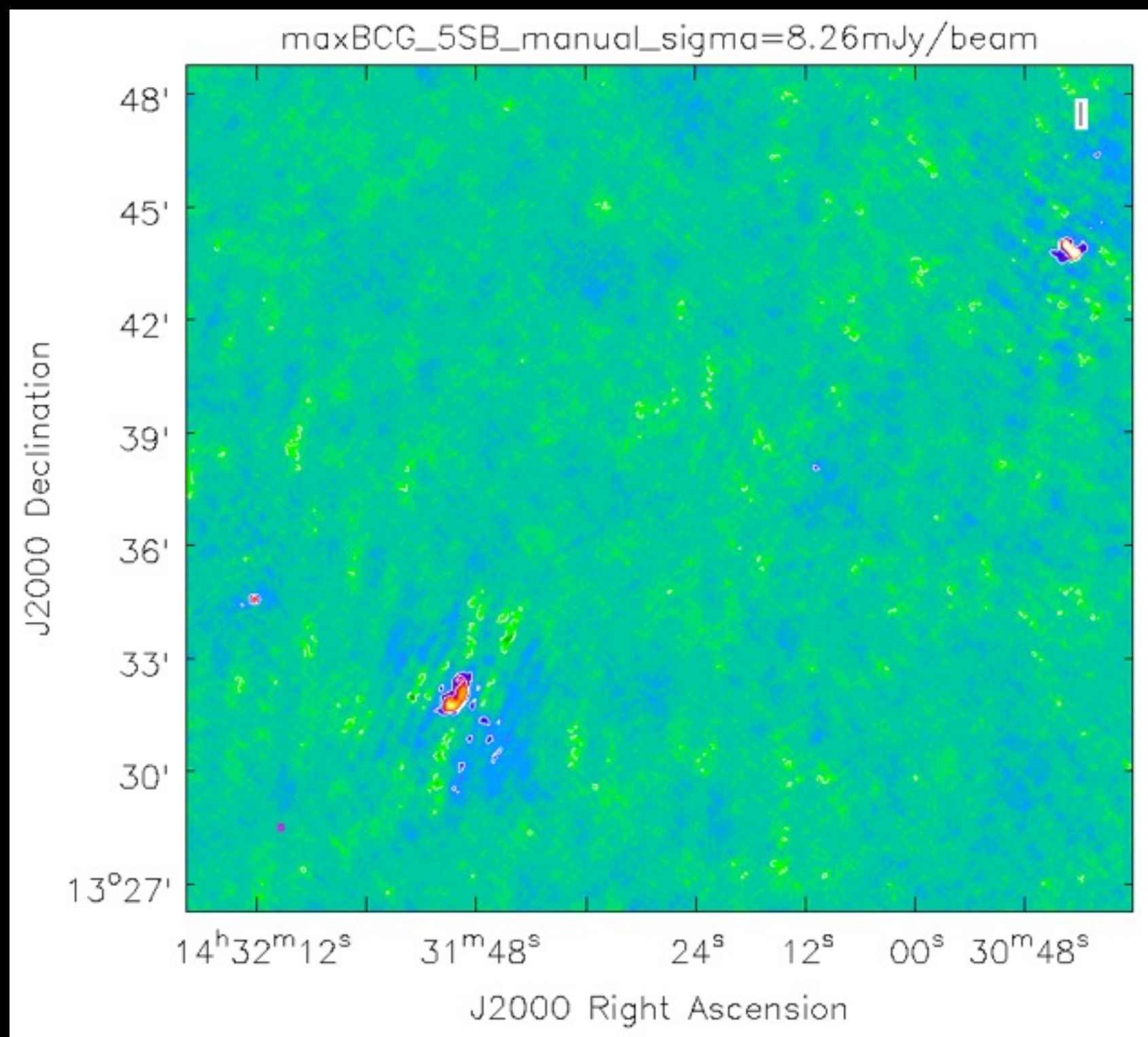
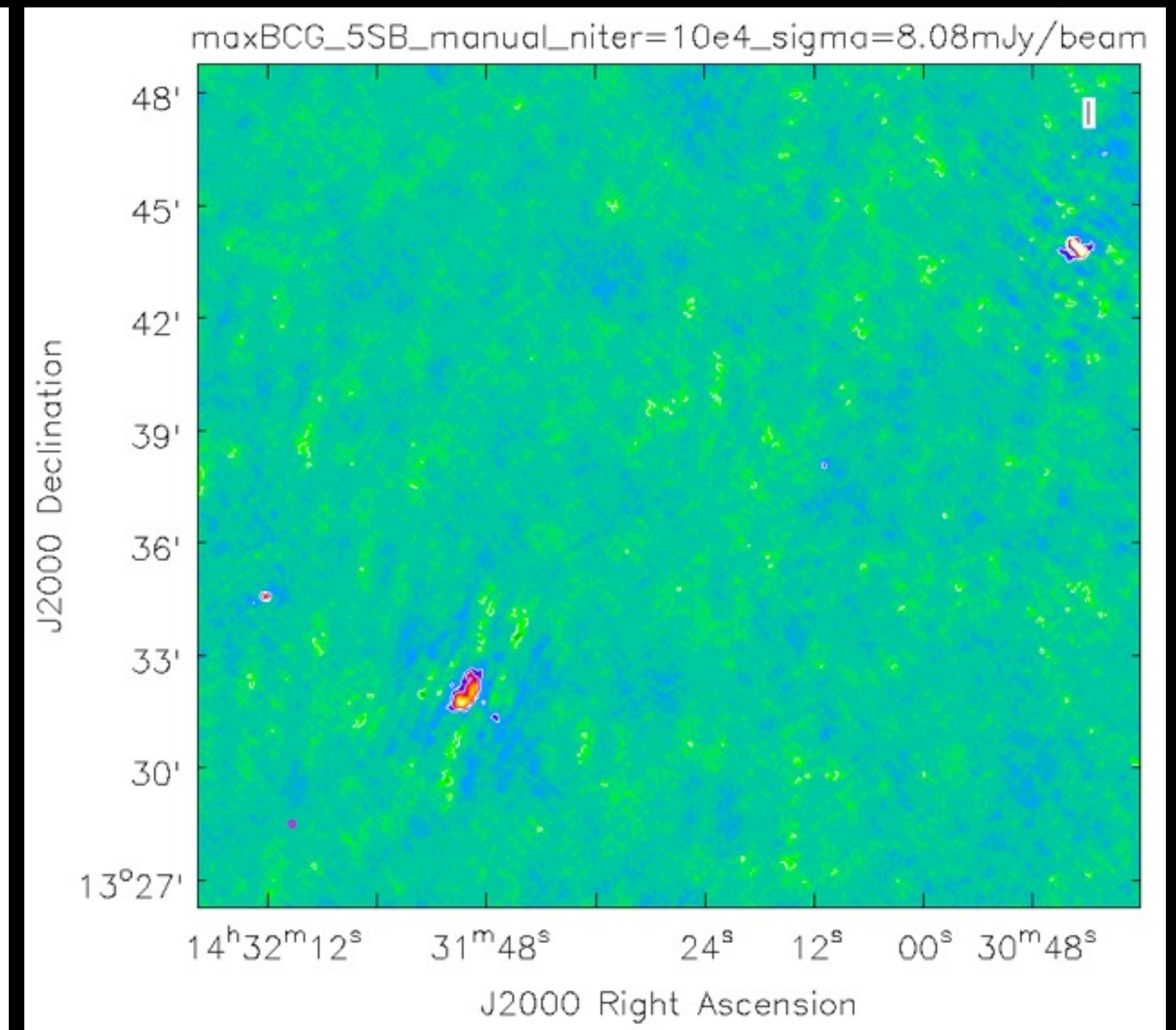
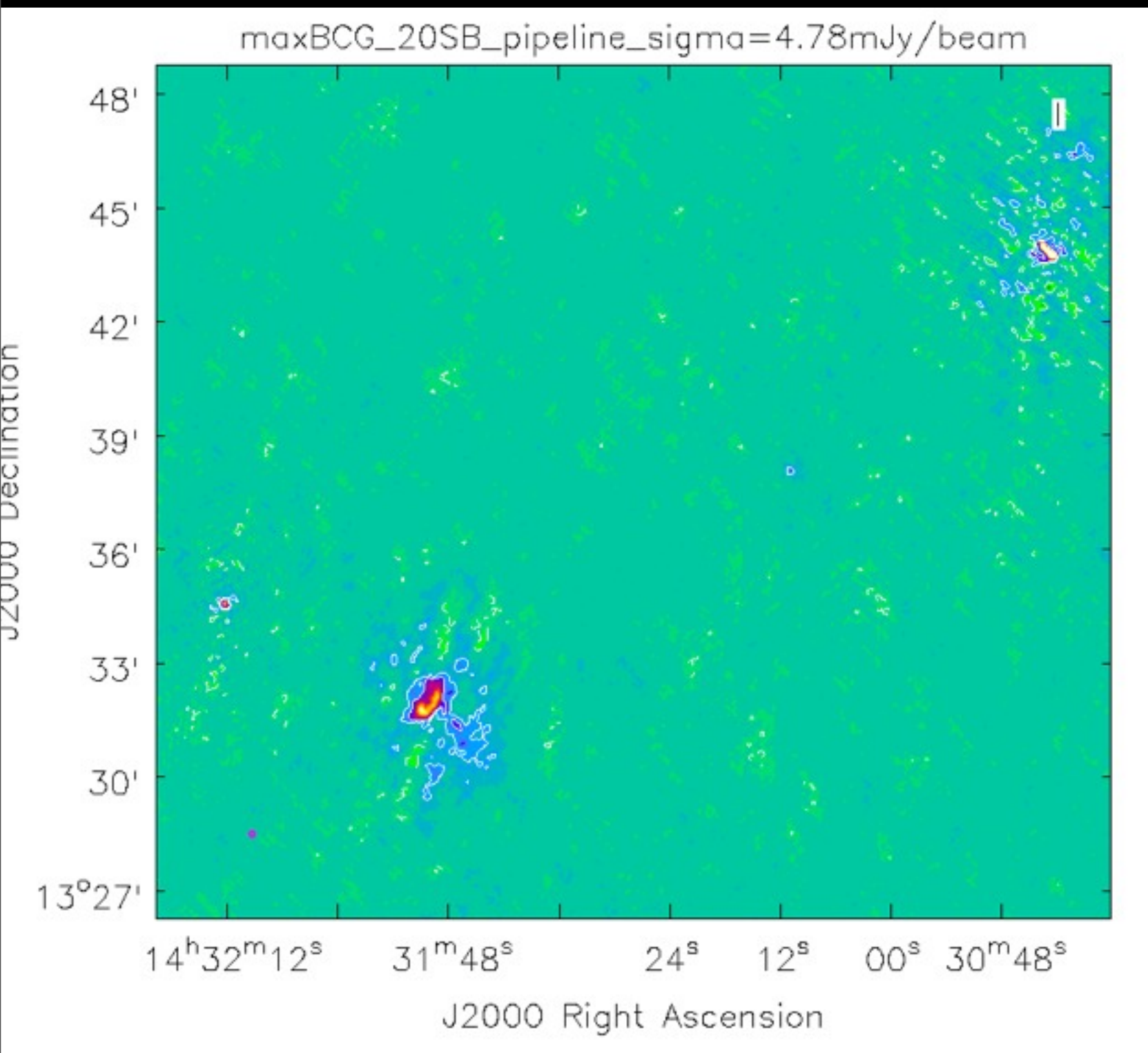
VLSS 1431+1331 - 64 MHz band



14<sup>h</sup>40<sup>m</sup> 36<sup>m</sup> 34<sup>m</sup> 32<sup>m</sup> 30<sup>m</sup> 28<sup>m</sup> 26<sup>m</sup> 24<sup>m</sup>  
J2000 Right Ascension

11" resolution, noise: 1.89 mJy / beam

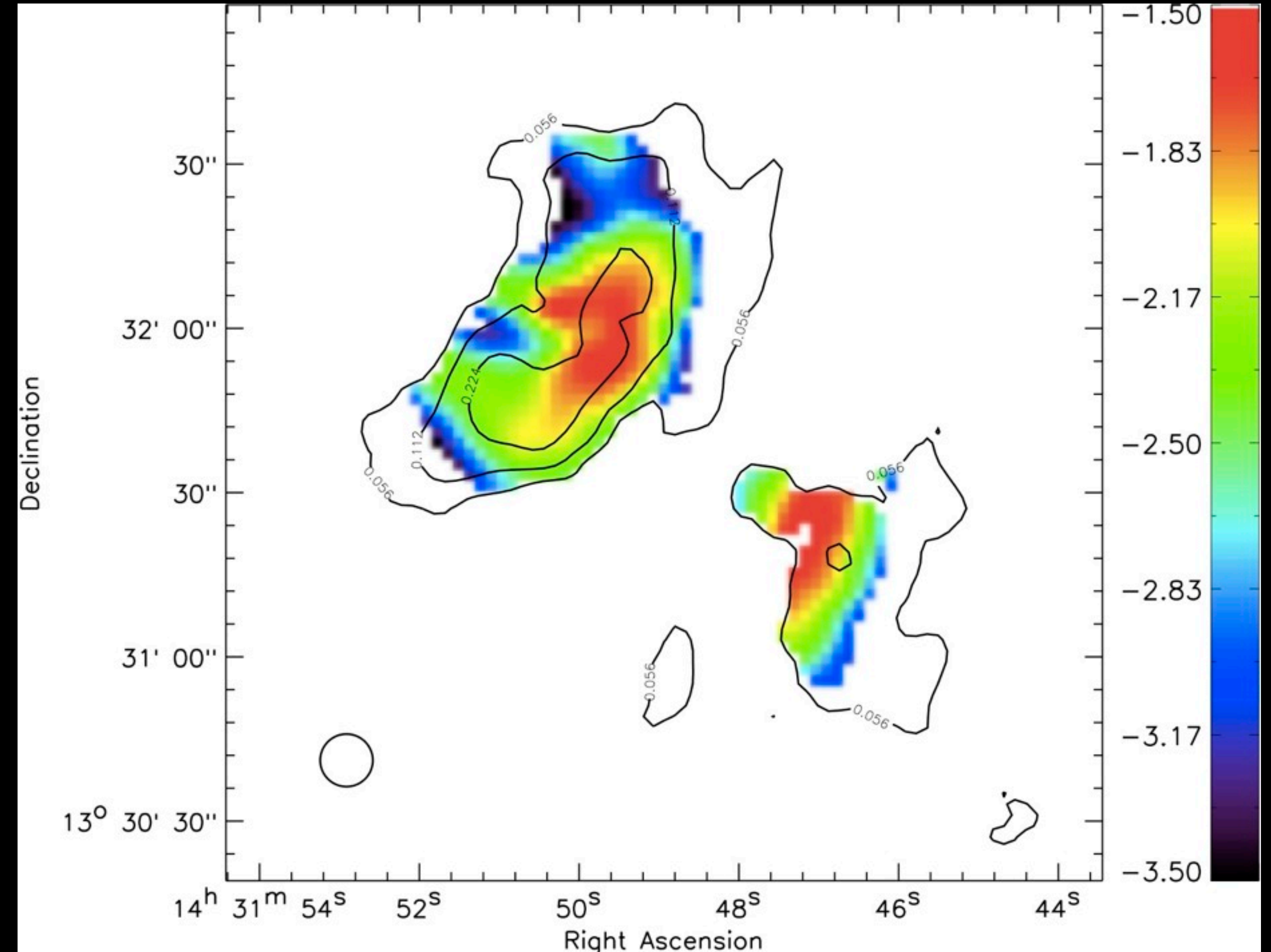
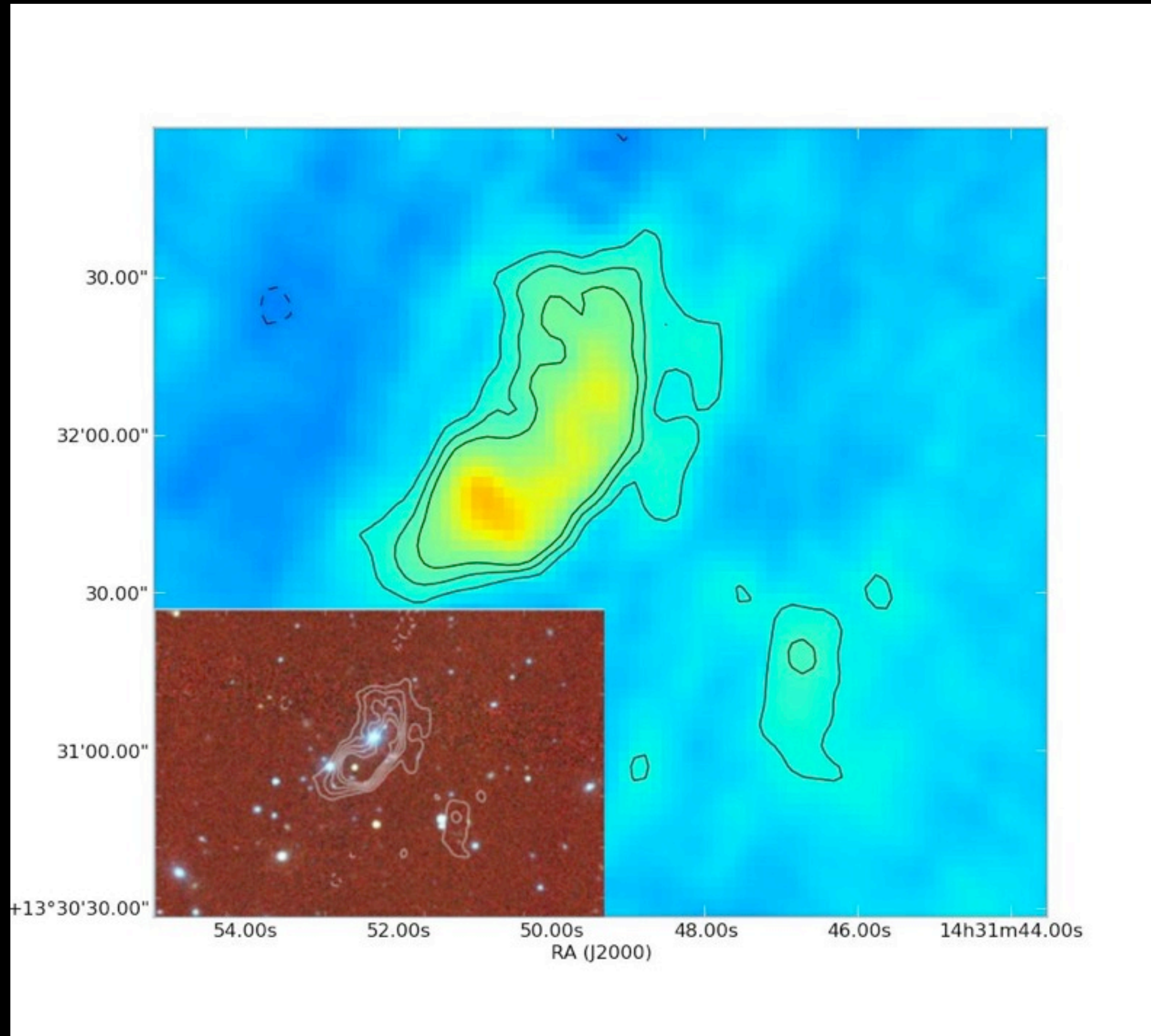
# Check of the "automatic" vs "manual" calibration



20SB - pipeline

5SB - manual

# Derive age of the relic VLSS 1431+1331 via spectral index analysis



# Virgo A - Francesco de Gasperin

Broad-band calibration to improve uvcoverage (important for the clean)

HBA: still working at improving the calibration of the remote stations (added and calibrated in the selfcal cycles)

## ➔ HBA

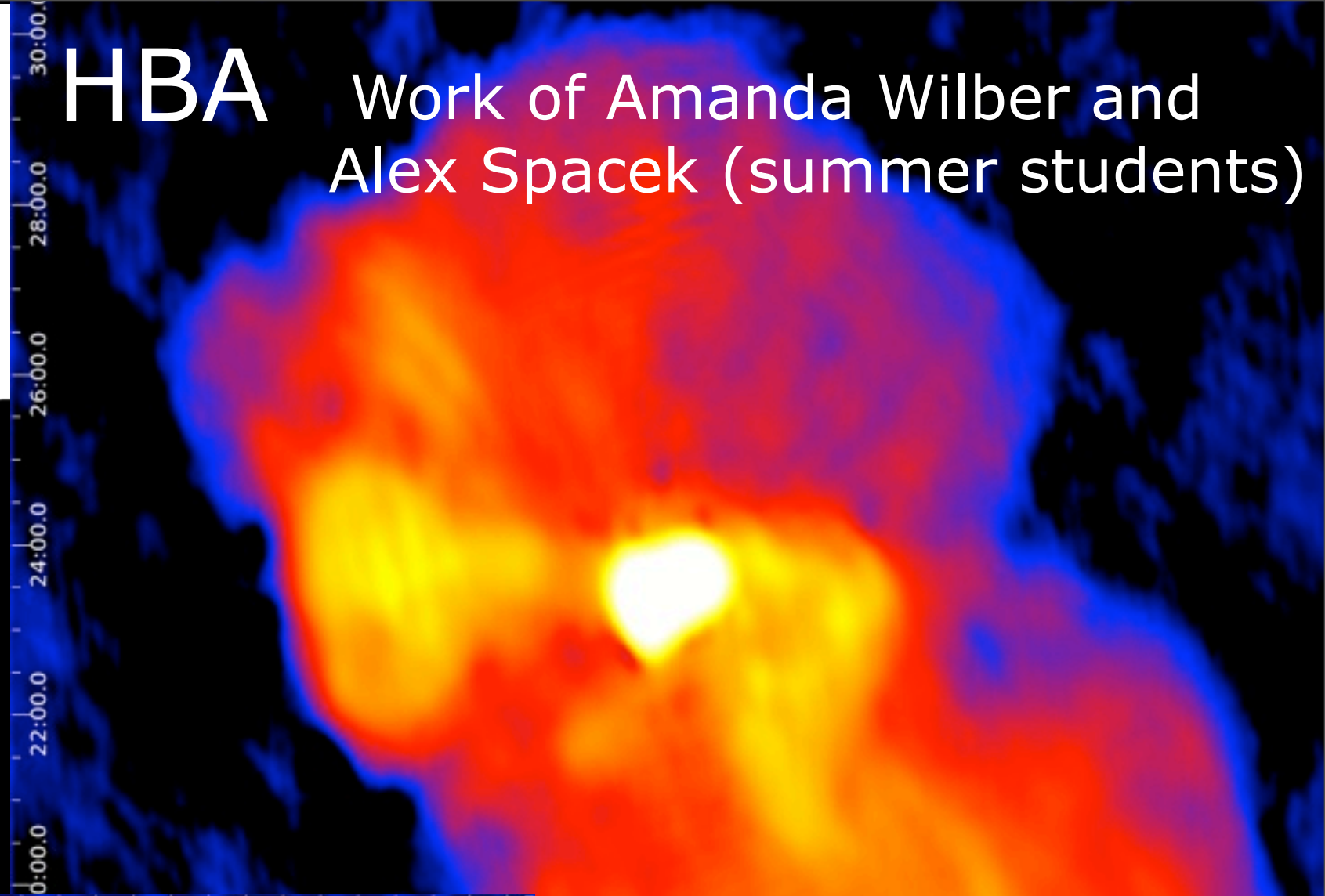
6 SBs spread all over the bw  
4 remotest station excluded (we are working to calibrate them)

robust: 0  
RMS: 20 mJy  
Dyn Range: 35k  
resolution: 24"x12"

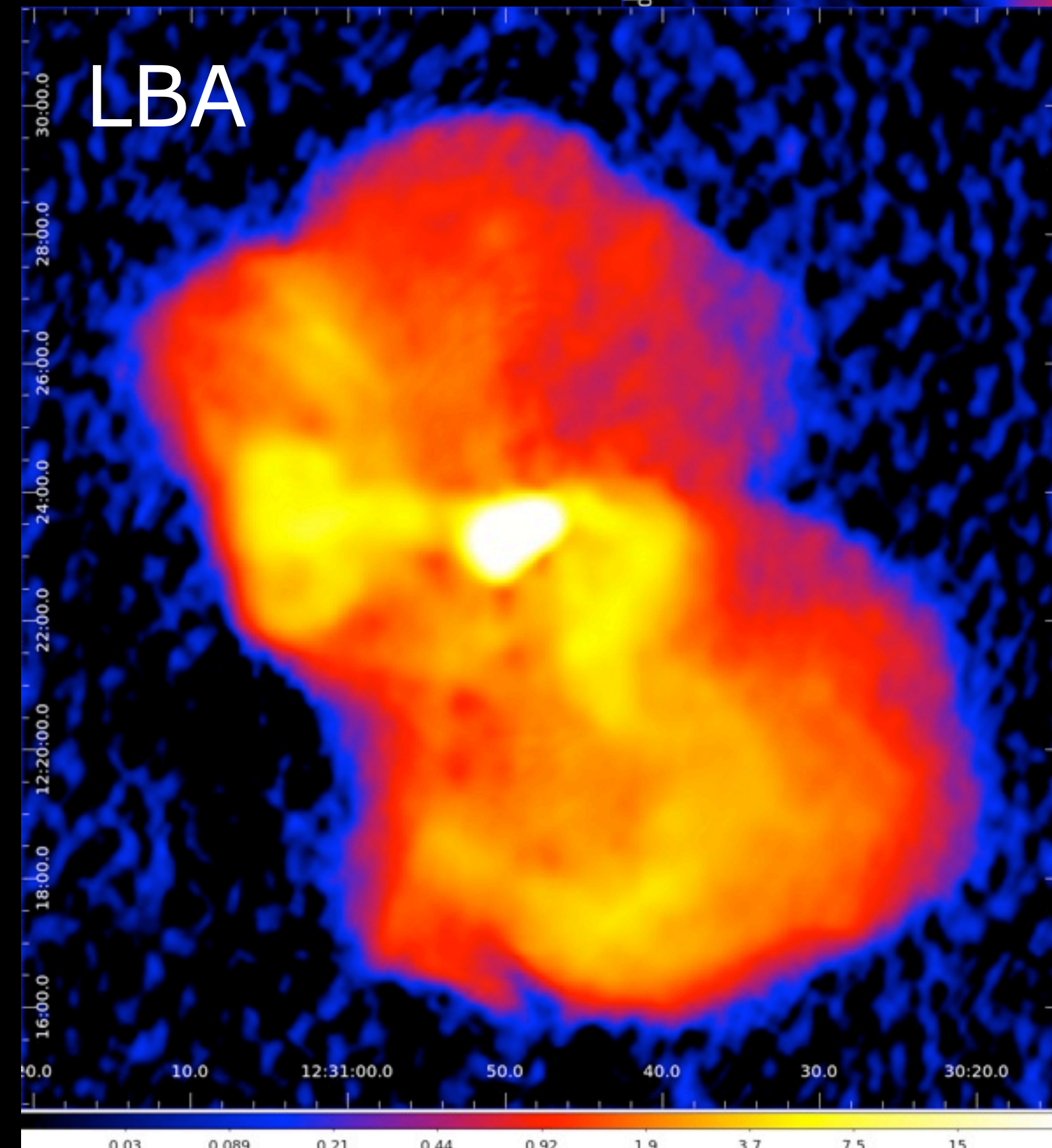
## ➔ LBA

7 SBs spread all over the bw  
all station included  
robust: -0.5  
RMS: 40 mJy  
Dyn Range: 60k  
resolution: 18"x18" (almost the same resolution of the old HBA map)

Next goal: wide field of the Virgo A area



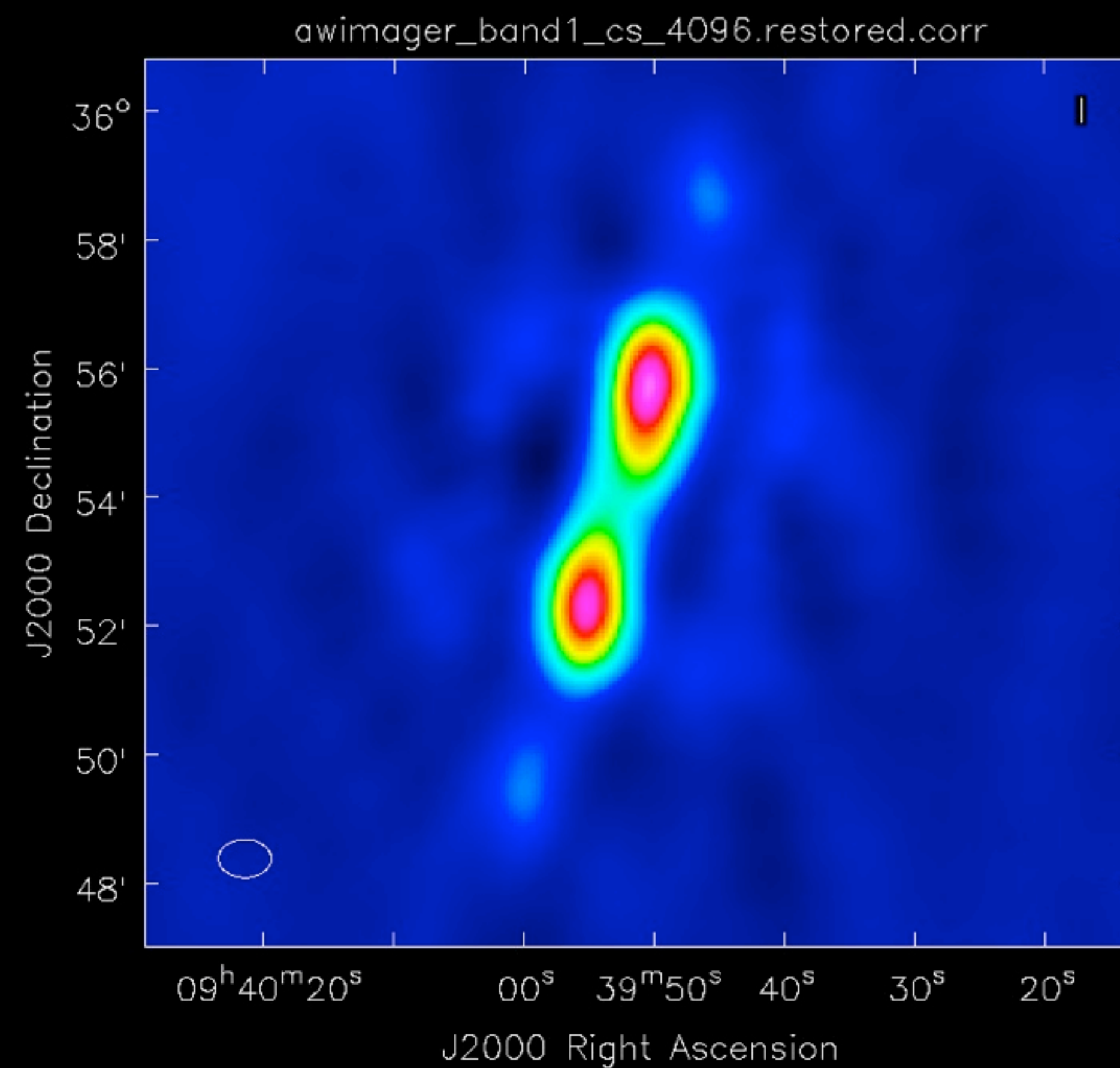
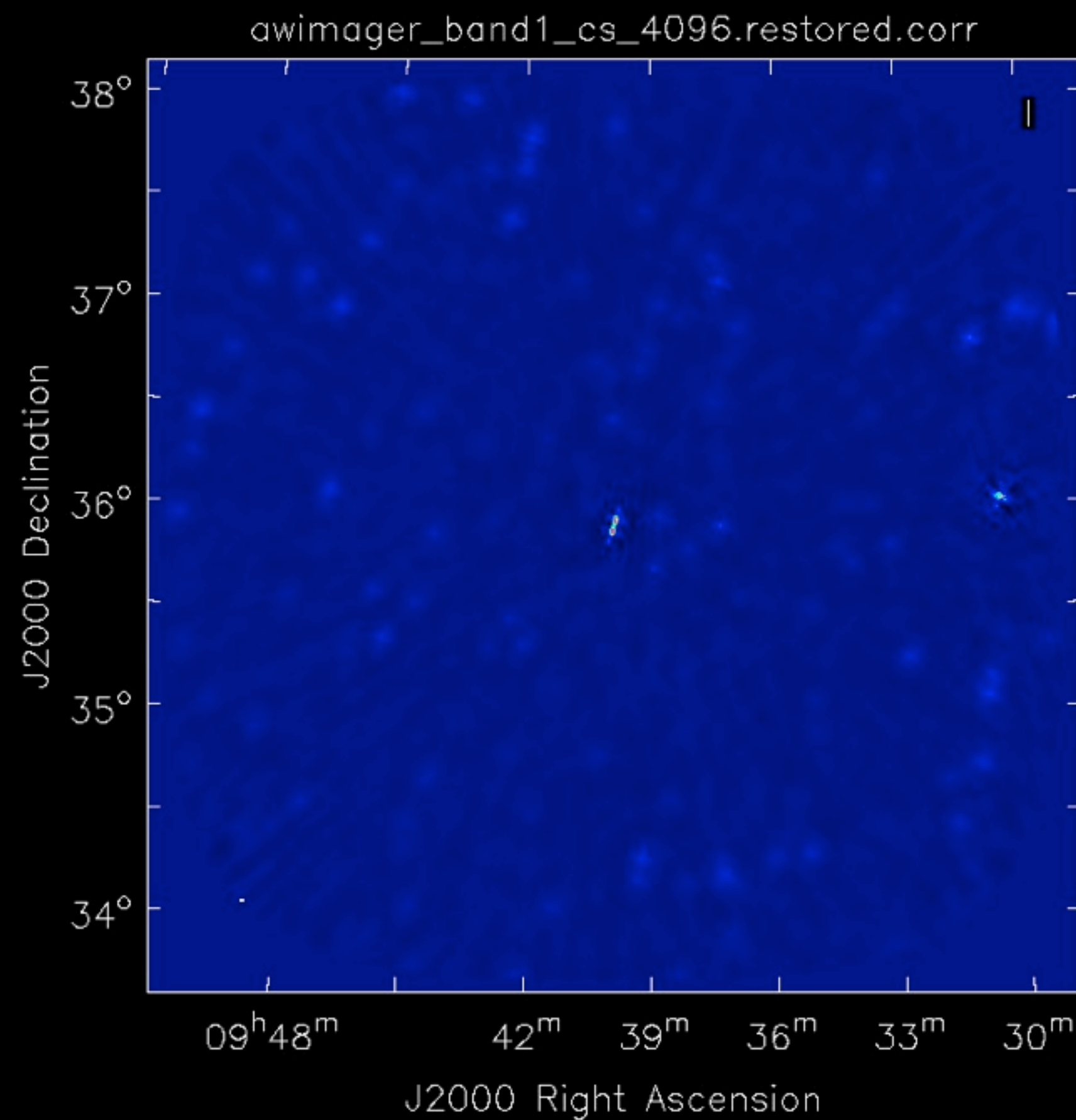
Work of Amanda Wilber and Alex Spacek (summer students)



Status Meeting - 26 June 2013

## 3C223 – Band 1 LBA INITIAL IMAGING - Jeremy Harwood

- RMS: 27 mJy / Beam
- Total flux correct to within  $\sim 5\%$  compared to Orru 2010 (extrapolated from 73.8 MHz)
- Total flux density: 35.39 Jy
- Northern lobe: 19.28 Jy
- Southern lobe: 16.10 Jy
- Extrapolation from 178 MHz shows under estimation of flux density – A promising initial sign for our future spectral analysis!



Left: 4 Degree FoV of 3C223 at 51.6Mhz using AWImager

Right: Image zoomed to 3C223

## 3C223 – Current Issues and Next Steps

- ‘Fuzzy halos’ around background point sources
- Artefacts close to source
- Image out to ~10 degrees to locate any further bright sources
- Imaging with CASA for comparison of image quality and flux
- Reduction of HBA data and further LBA bands



# What next?

- Still problems for source sources (Hydra A, Her A)
- A number of test to be done:  
are we happy with the approach we have followed for the observations? in particular the interleaving calibrator of HBA, did we spend too much time on calibrator? was it necessary? did we have problems with observations done (partly) during the day?
- Catch up with the LBA datasets....
- First source (3C247) observed for the "longbaseline" group and soon starting the reduction
- More sources to be observed soon (e.g. double-doubles)