

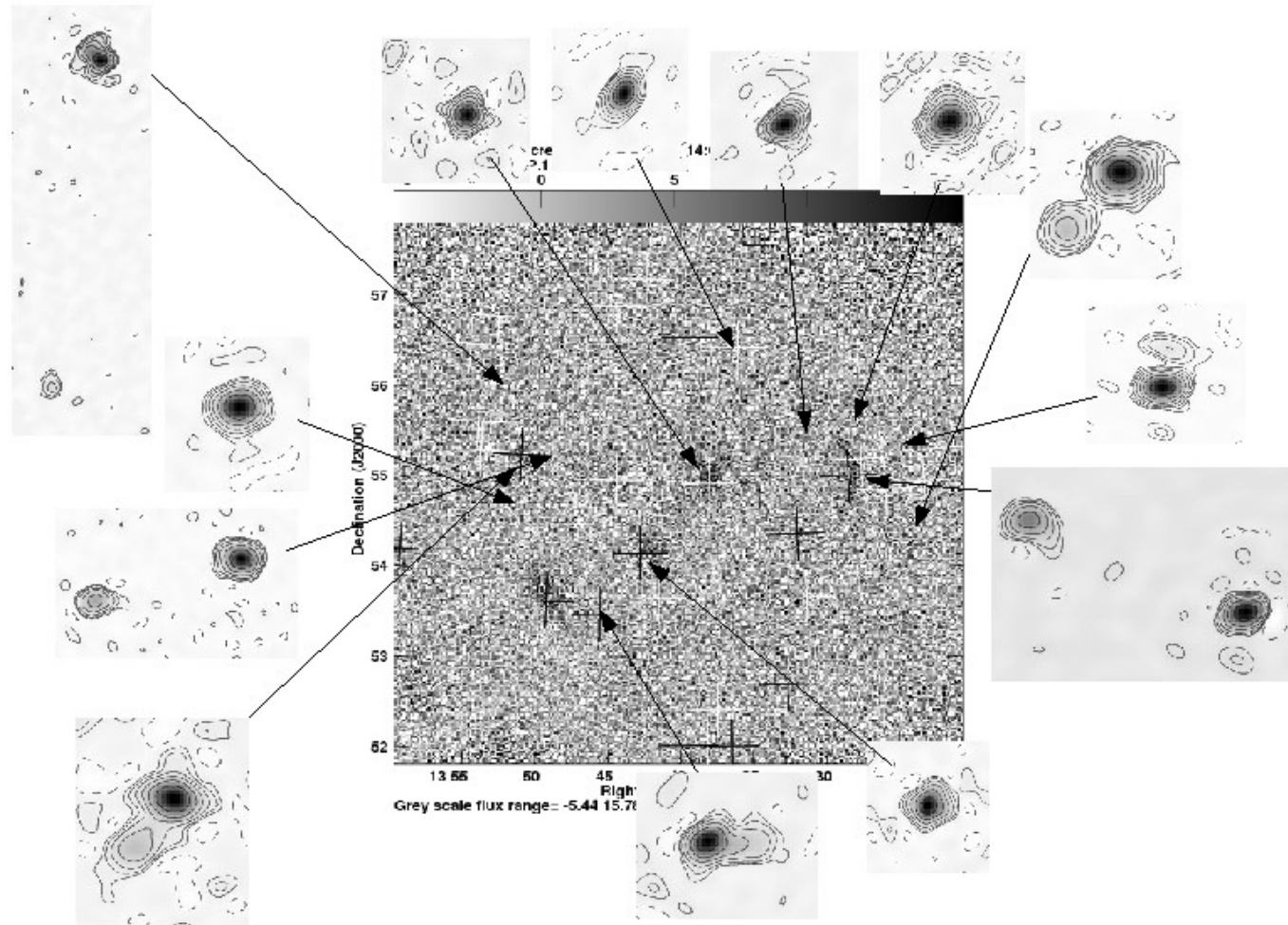


Long-baseline Busy Week, 9-13 January

Neal Jackson, for the Long-Baseline Working Group

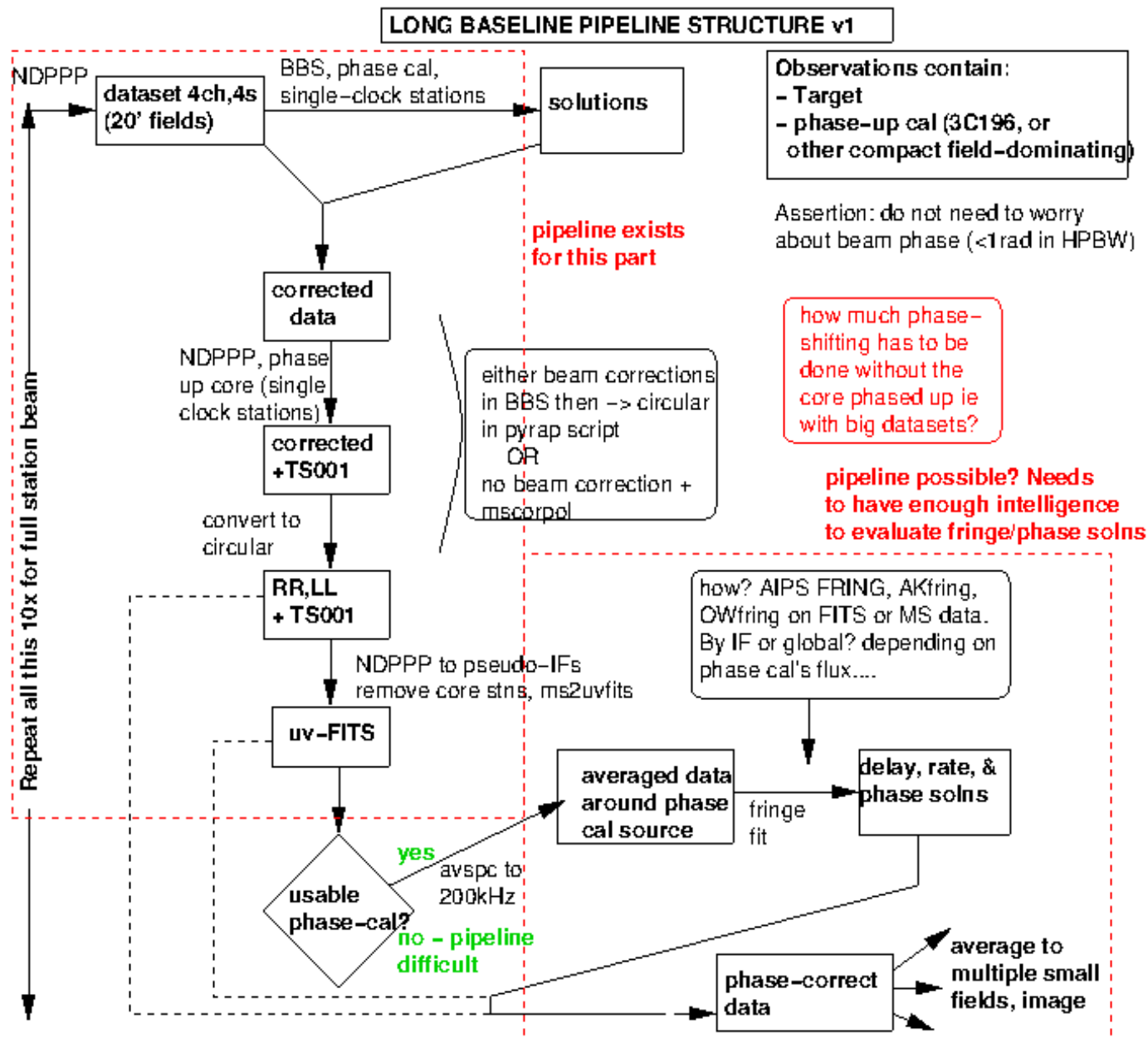
BW partially supported by EU TWINN programme “BALTICS”

Object of the exercise: routine pipeline processing of LB data



Current state of the art: map of a survey field from June 2016 BW
BUT: (1) highly manual; (2) only 12 SB.

Current (pre-BW) pipeline



Problems:

Stops halfway, before hybrid map stage

Goes into AIPS for fringe-fit

Very manual after the early stage

Aims:

Eliminate the AIPS stage

Work on pipelining and "production mode" strategy

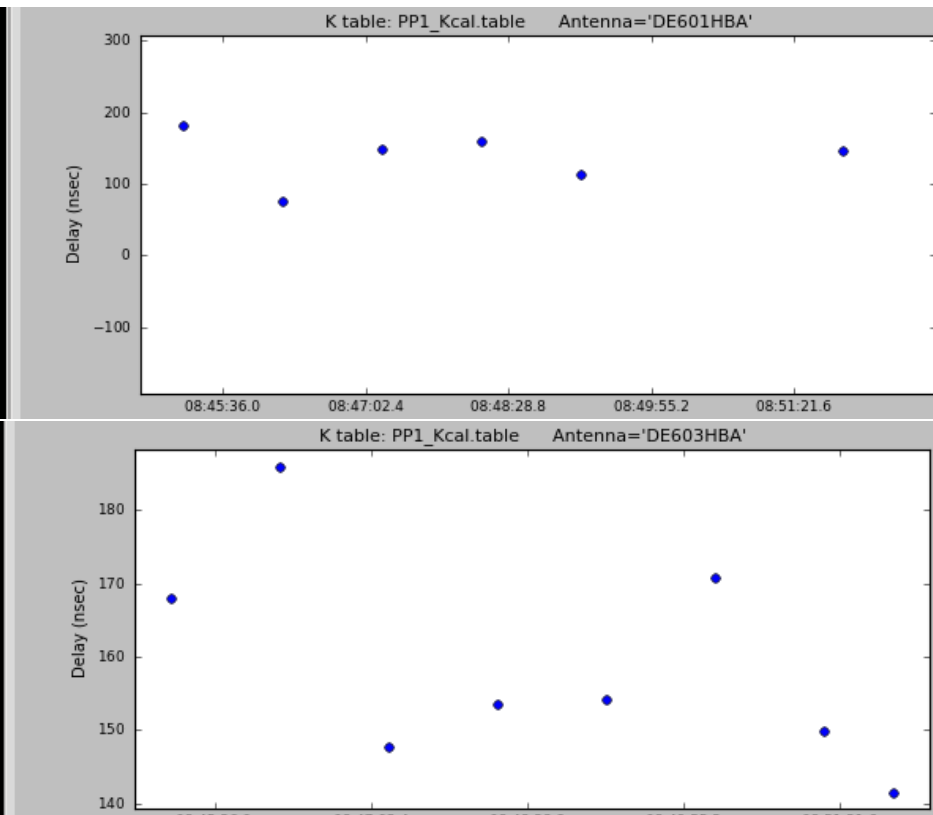
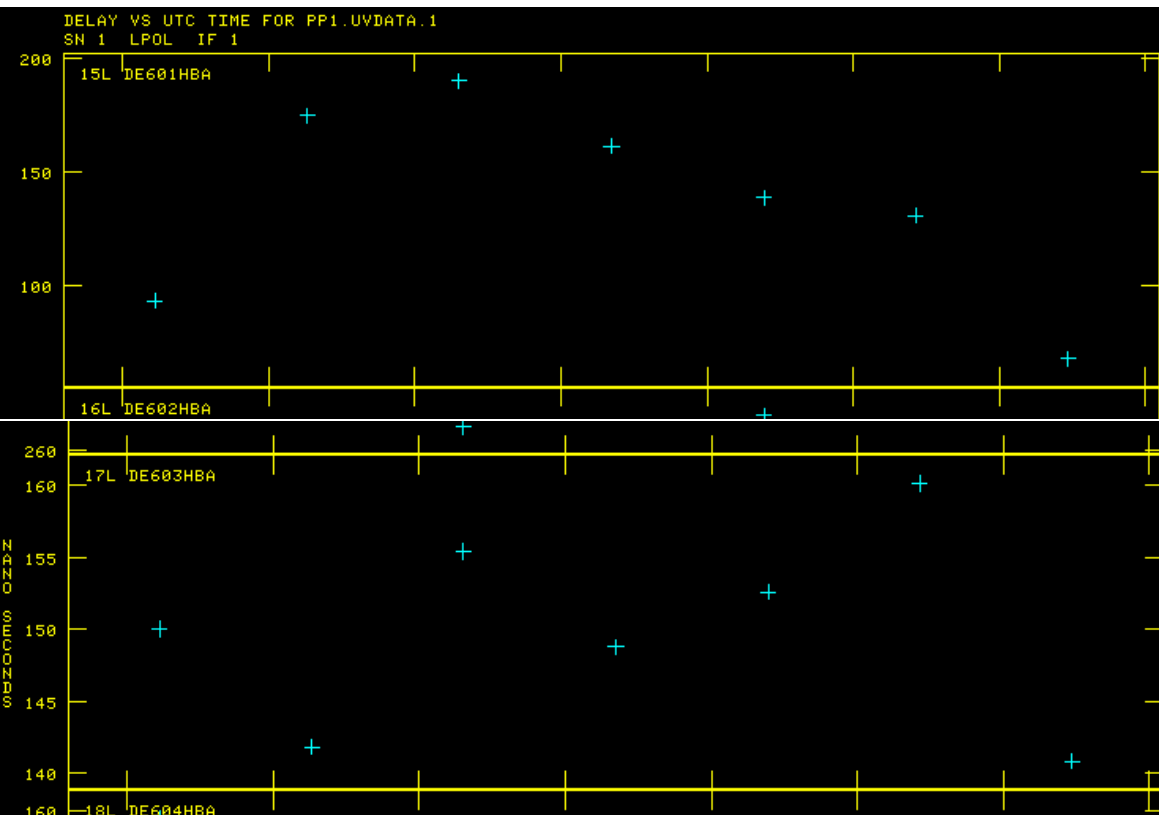
Induct new users

Elimination of AIPS stage

Medium-term: new CASA fringe-fitting (developed at Jive, Mark Kettenis/Ilse van Bommel)

Short-term: (1) concentrate on fields with bright LBCS calibrators

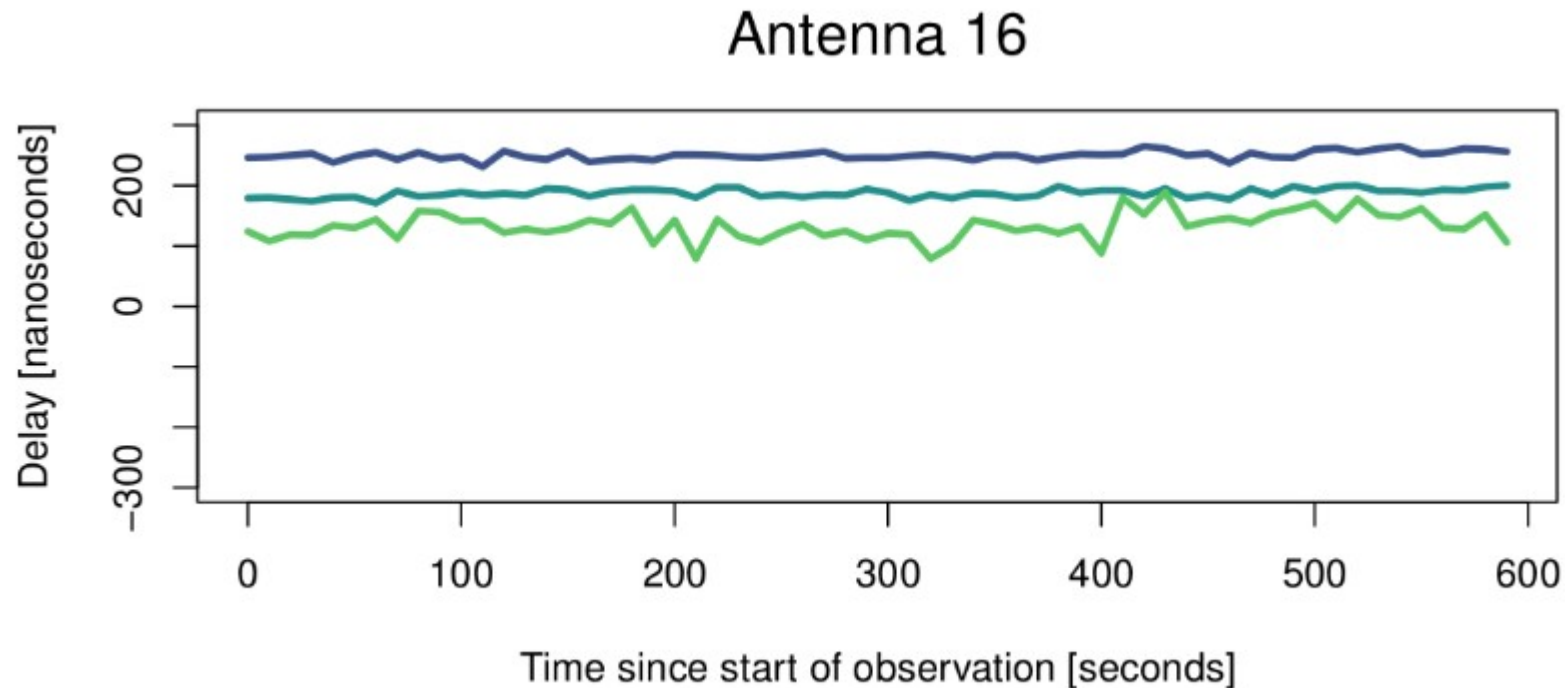
(2) use CASA gaincal mode 'K'



Testing: AIPS and CASA reasonably consistent for bright calibrators - incorporated

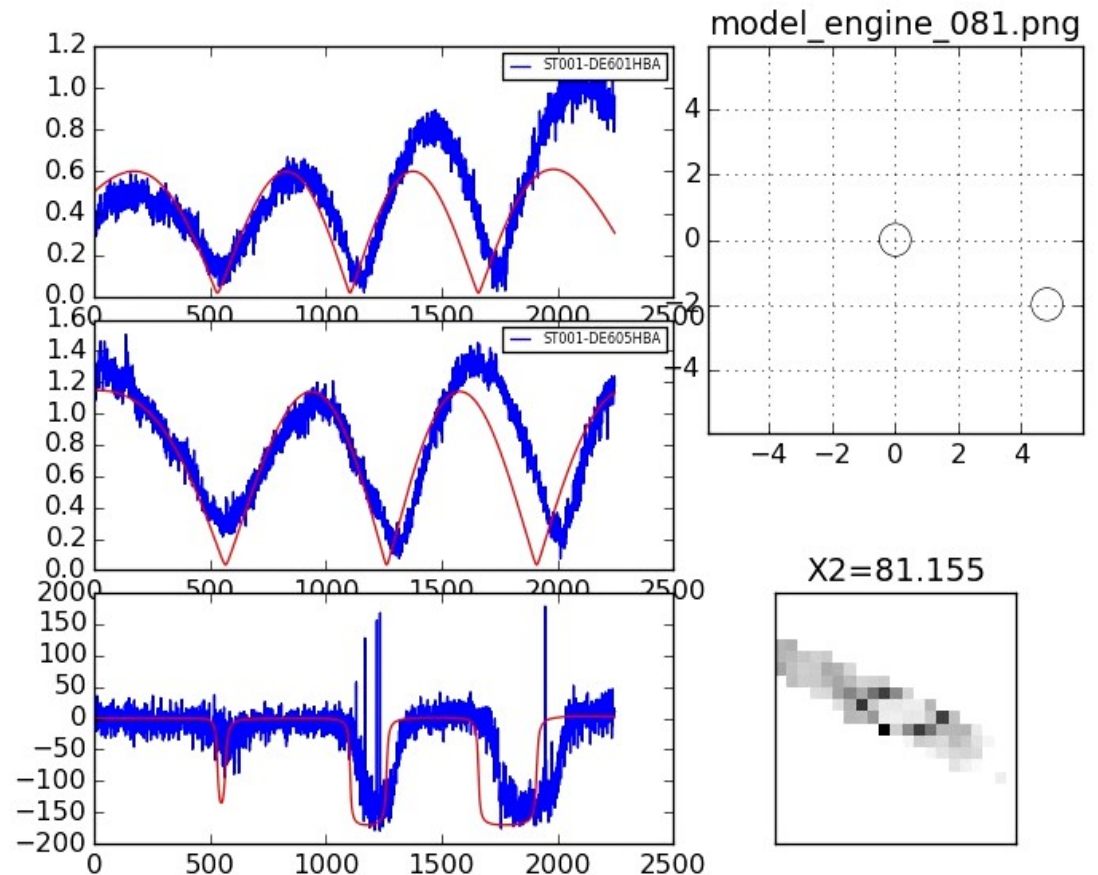
Pipelining of the final stage

- Testing ongoing of scripts used by EoR group (Maaijke Mevius/Ger de Bruyn)
- Being adapted for surveys data – in particular for clock/TEC on IBs and robustness
- Incorporate closure phase fitting/testing to provide stable starting models

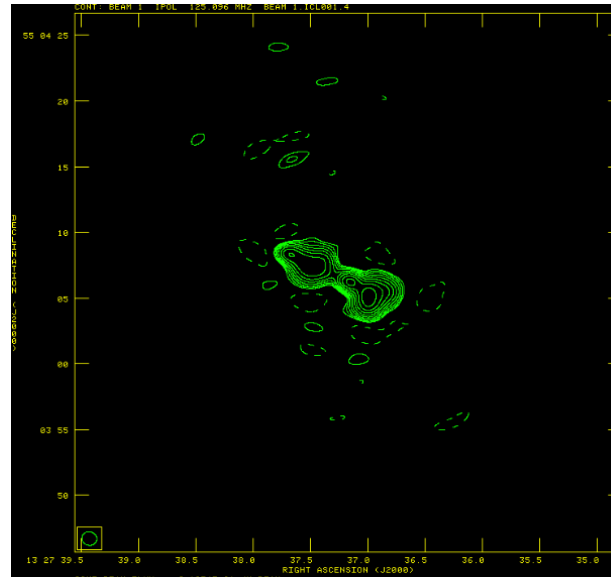
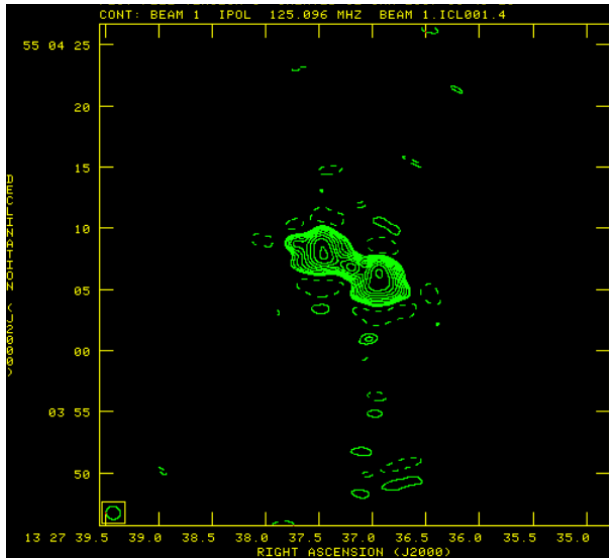


Pipelining of the final stage

- Testing ongoing of scripts used by EoR group (Maaijke Mevius/Ger de Bruyn)
- Being adapted for surveys data – in particular for clock/TEC on IBs and robustness
- Incorporate closure phase fitting/testing to provide stable starting models



Maps of LBCS source made by attendees (some new to LB data):



Top: AIPS
BL: WSClean scripts
BR: Casa

