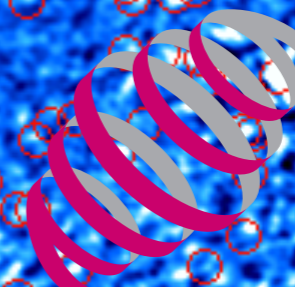
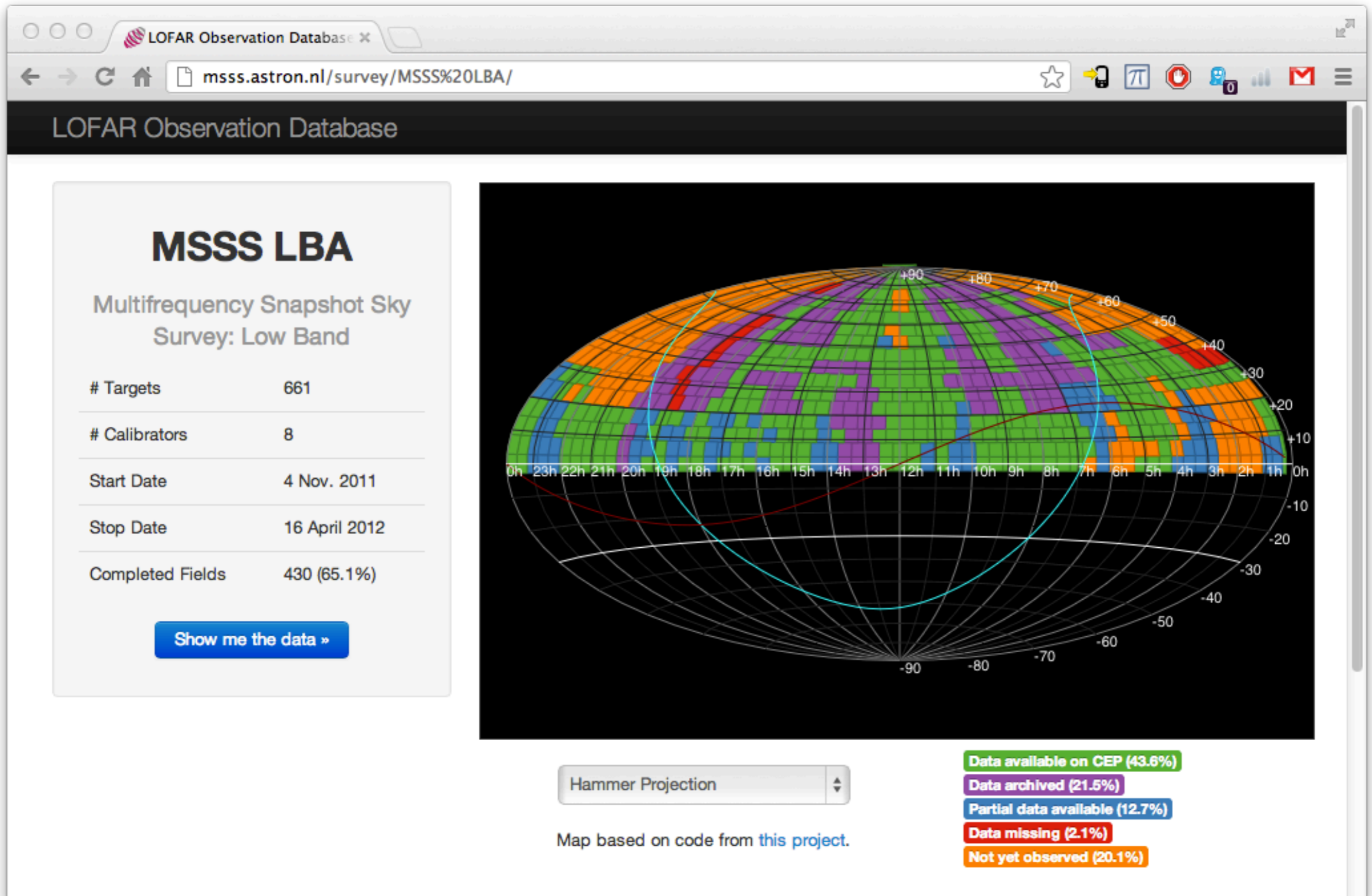


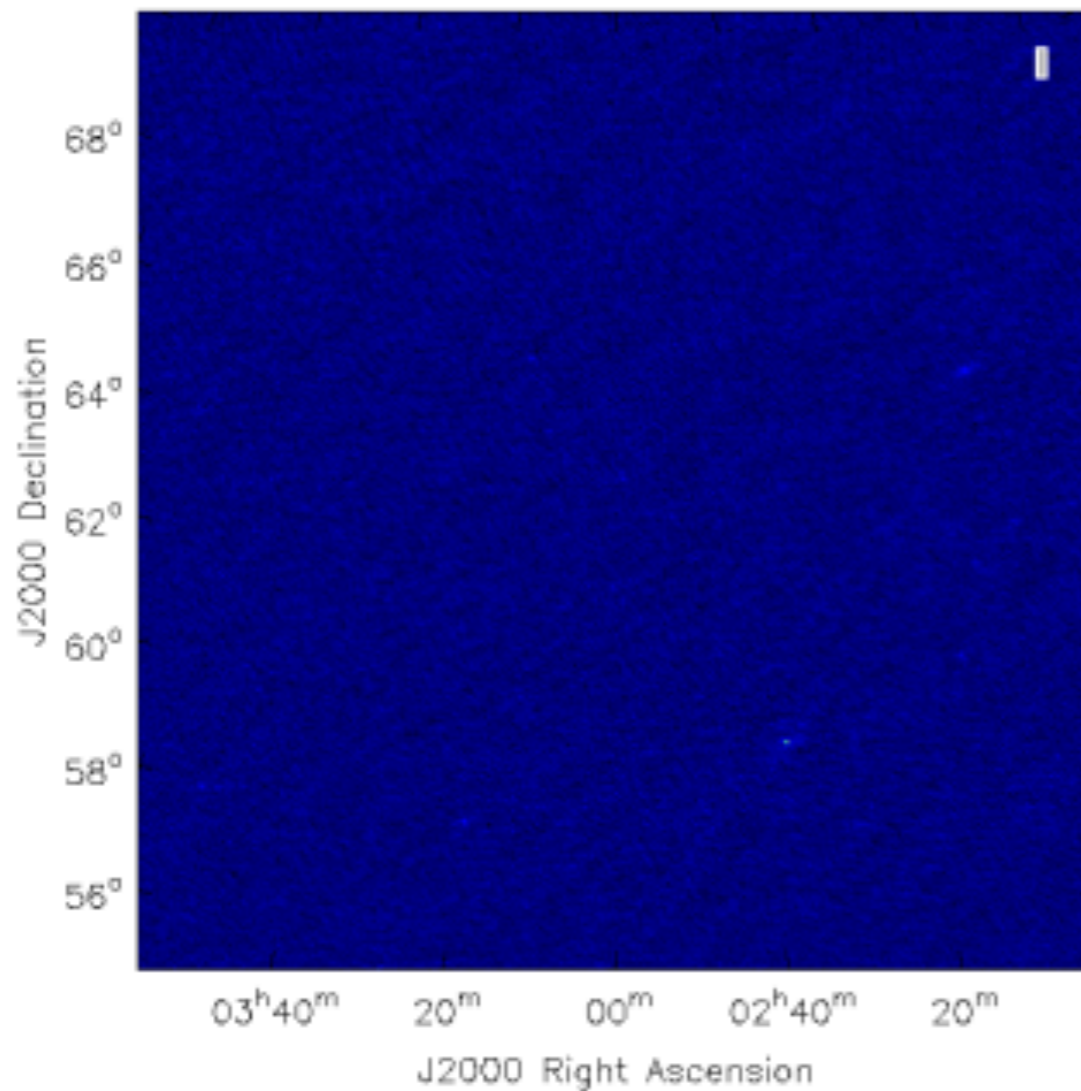
MSSS Update

George Heald
(on behalf of the MSSS Team)
LSM, 28 November 2012

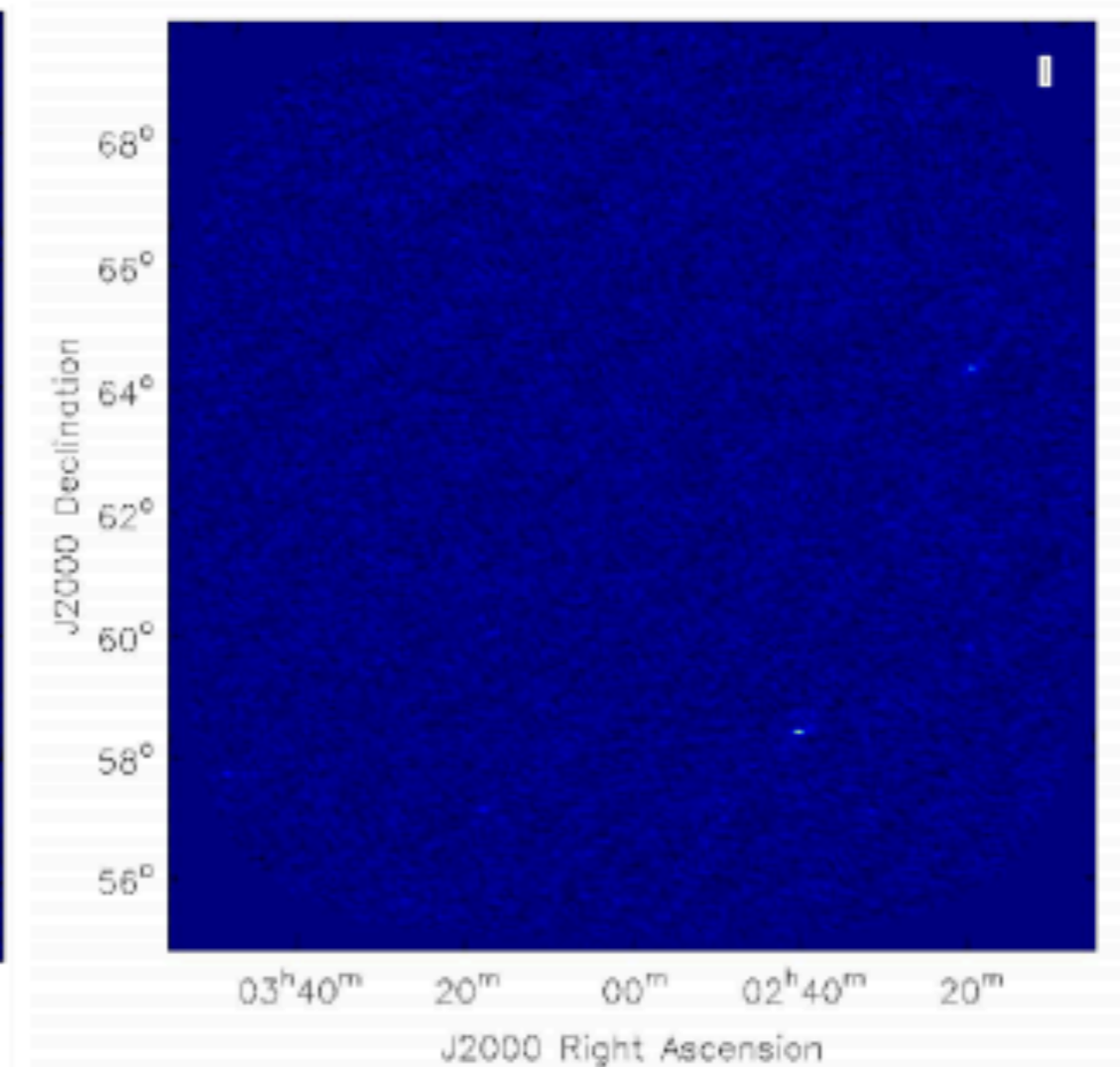




- Pipeline currently includes a simple, shallow cleaning strategy
- Algorithm for automatic deeper cleaning now available



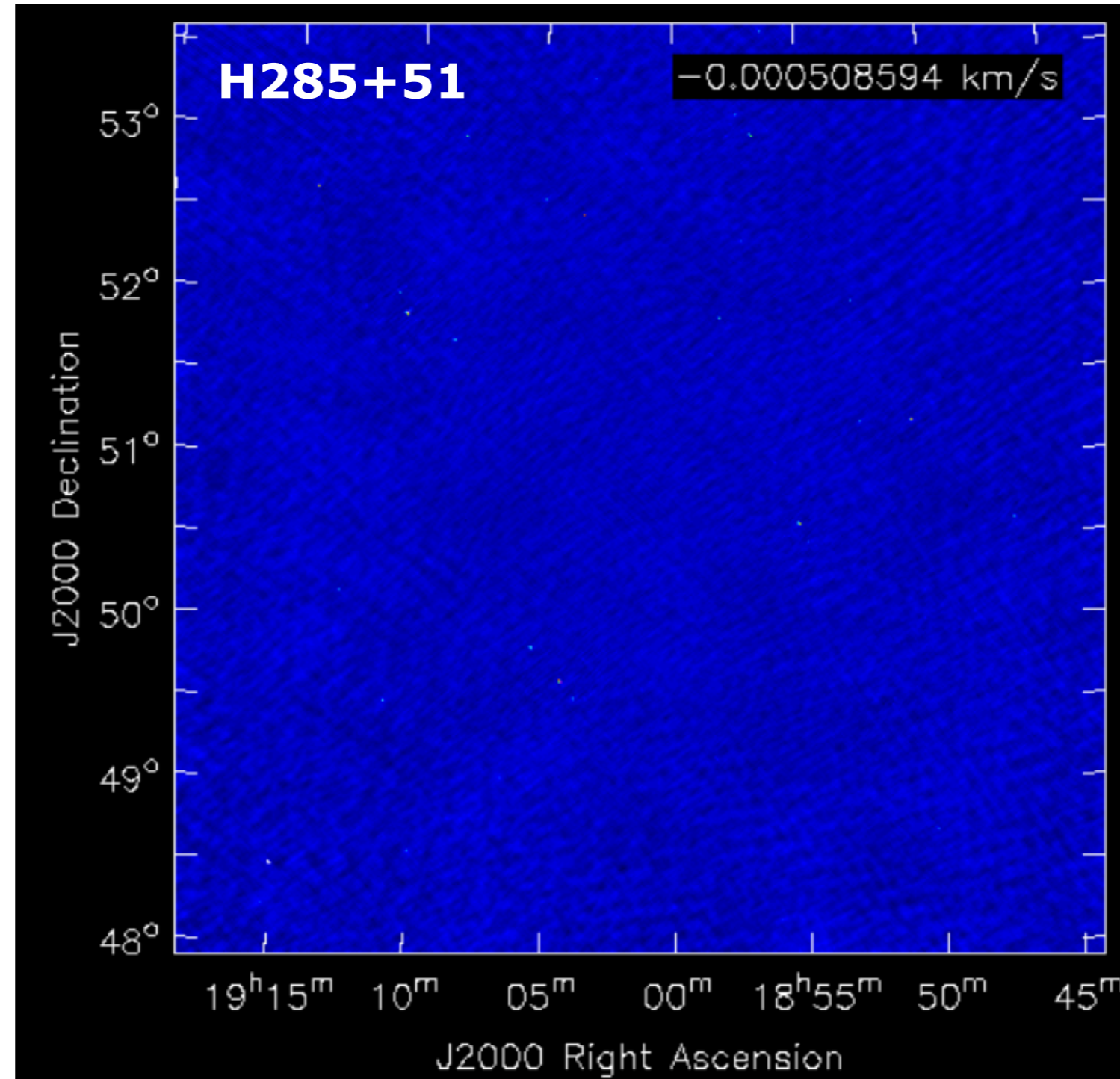
(a) CASA



(b) AWImager

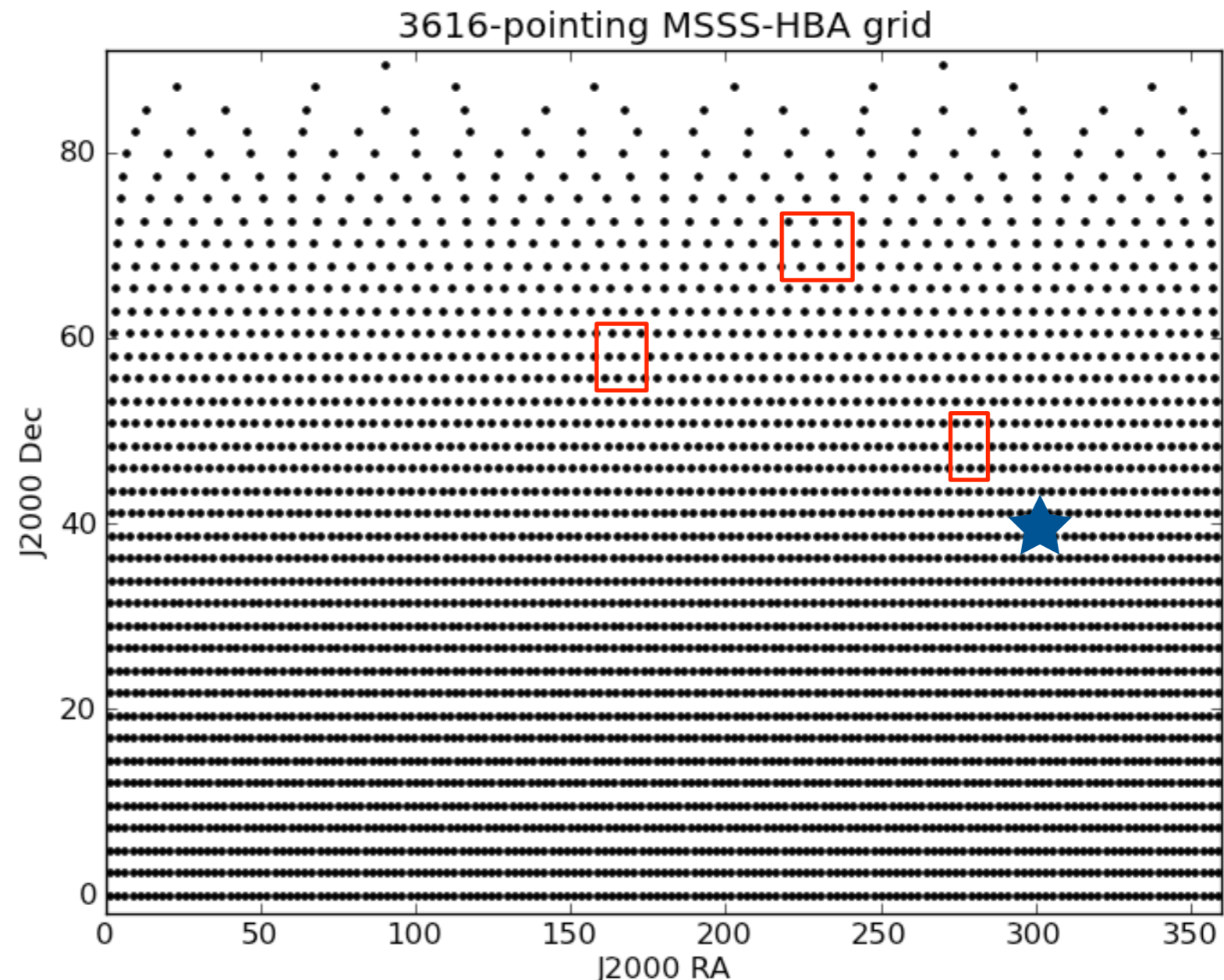
Harwood

- baselines <20km, 25 mJy/beam noise for the field shown here
- default demixing strategy incorrect; new calibration script now available
- Other fields do not turn out as well with auto-processing
- More work needed to assess quality of calibration solutions...



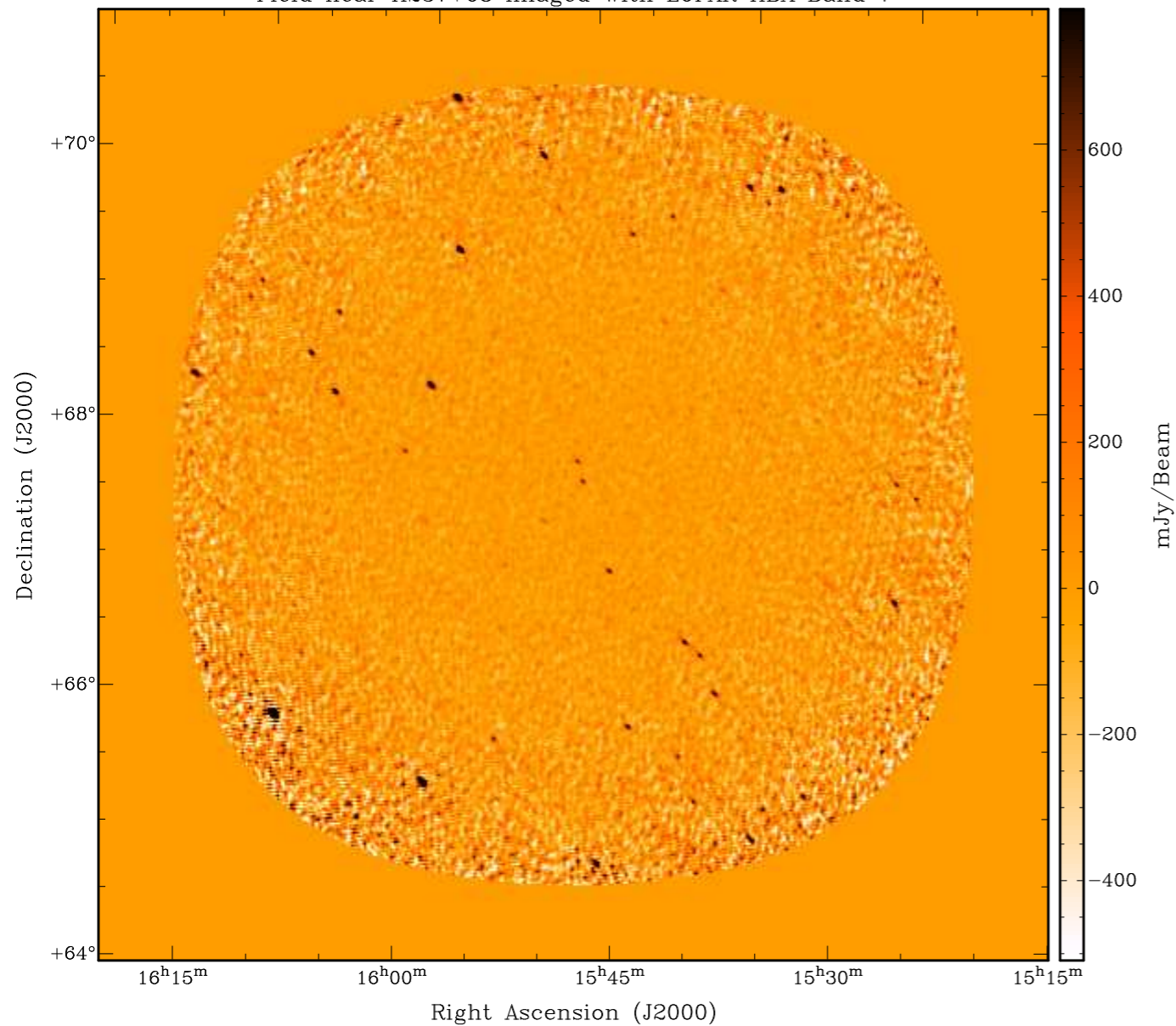
Williams

- Three regions were observed (weekend of 10-11 November):
 - near L227+69 (MSSS Verification Field)
 - near Lockman Hole (no bright sources in vicinity)
 - near(ish) Cygnus A (to ensure no difficulties)

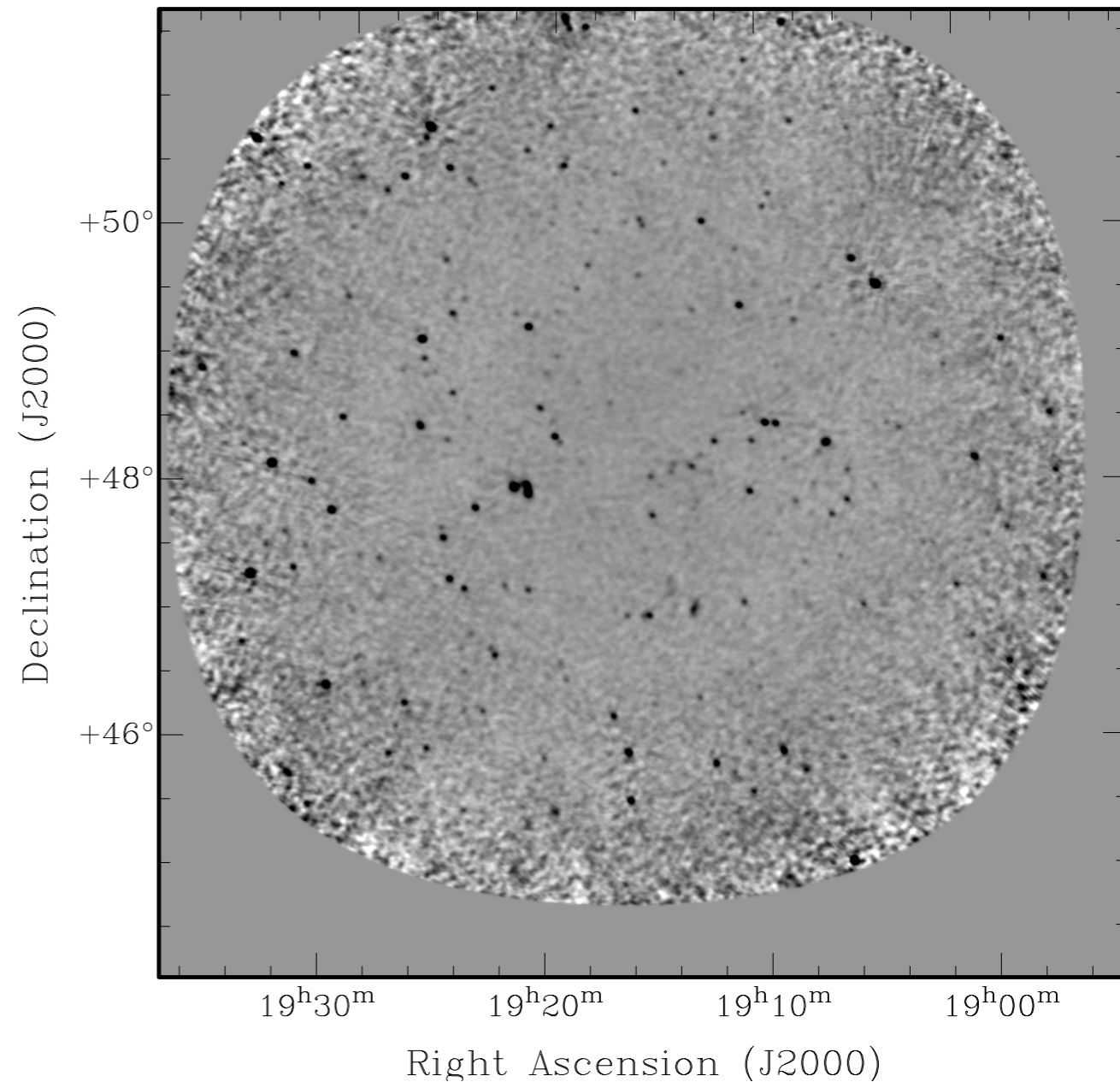




Field near H237+68 imaged with LOFAR HBA Band 7

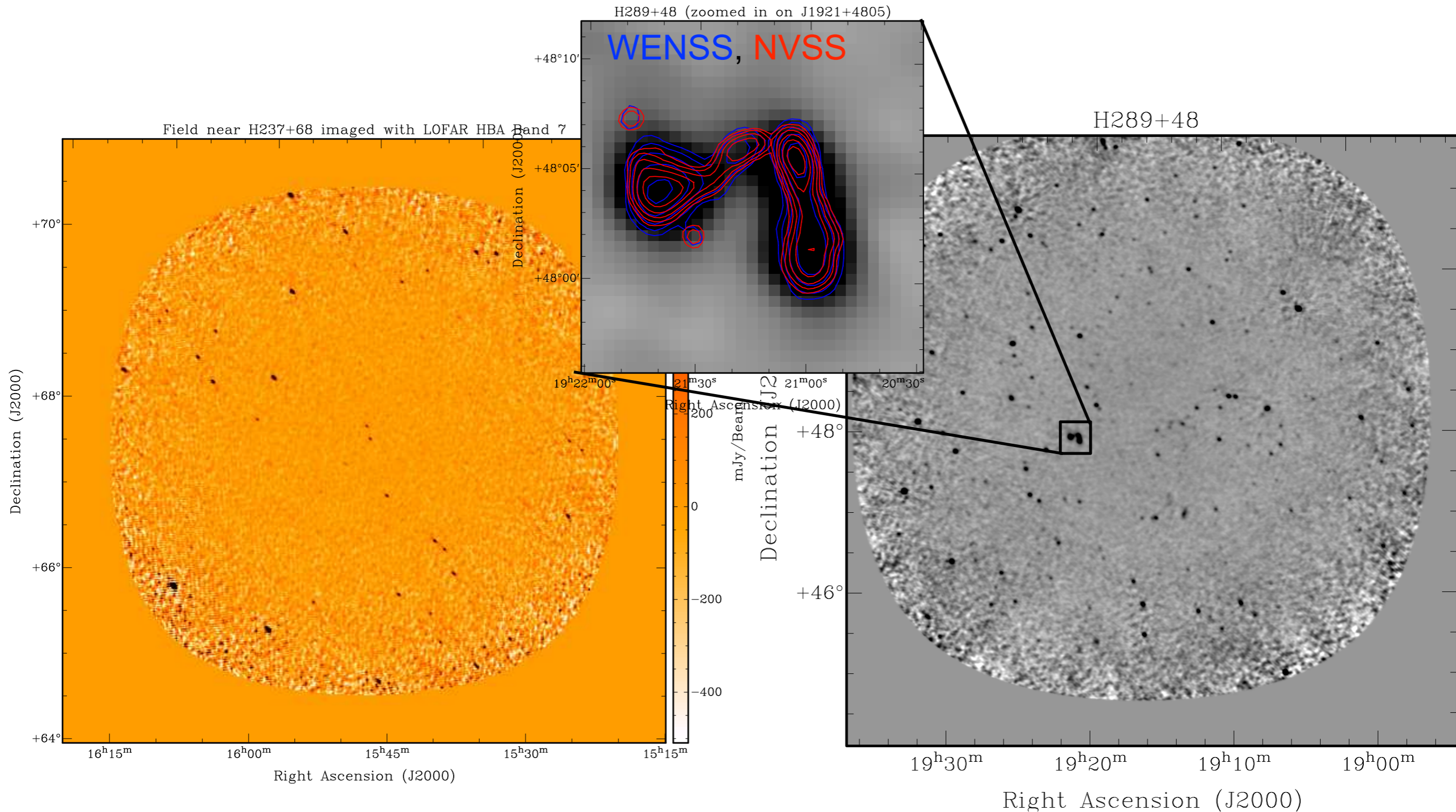


H289+48



▪ Note: **only automatic processing used**

Breton, Broderick

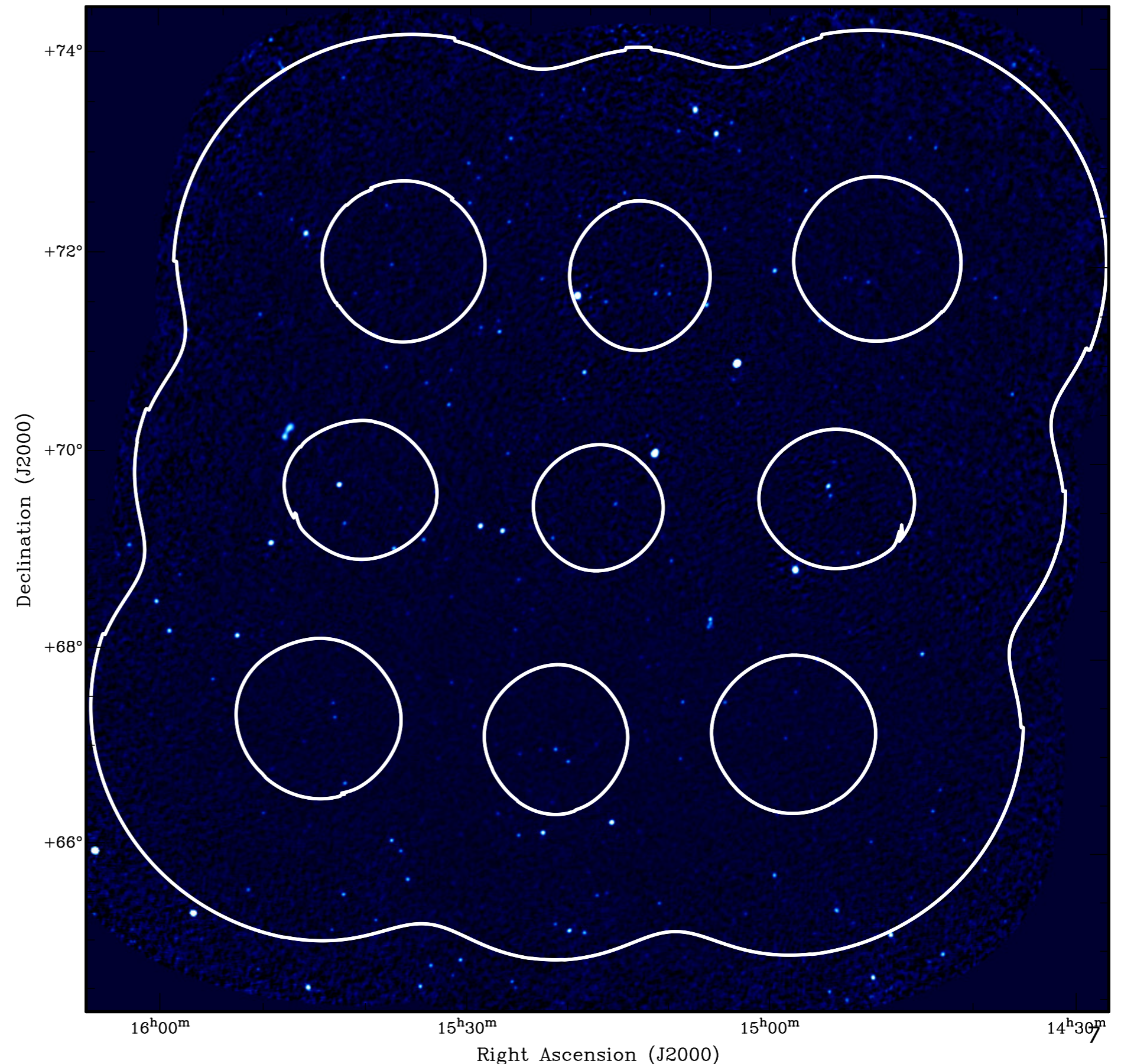


▪ Note: **only automatic processing used**

Breton, Broderick

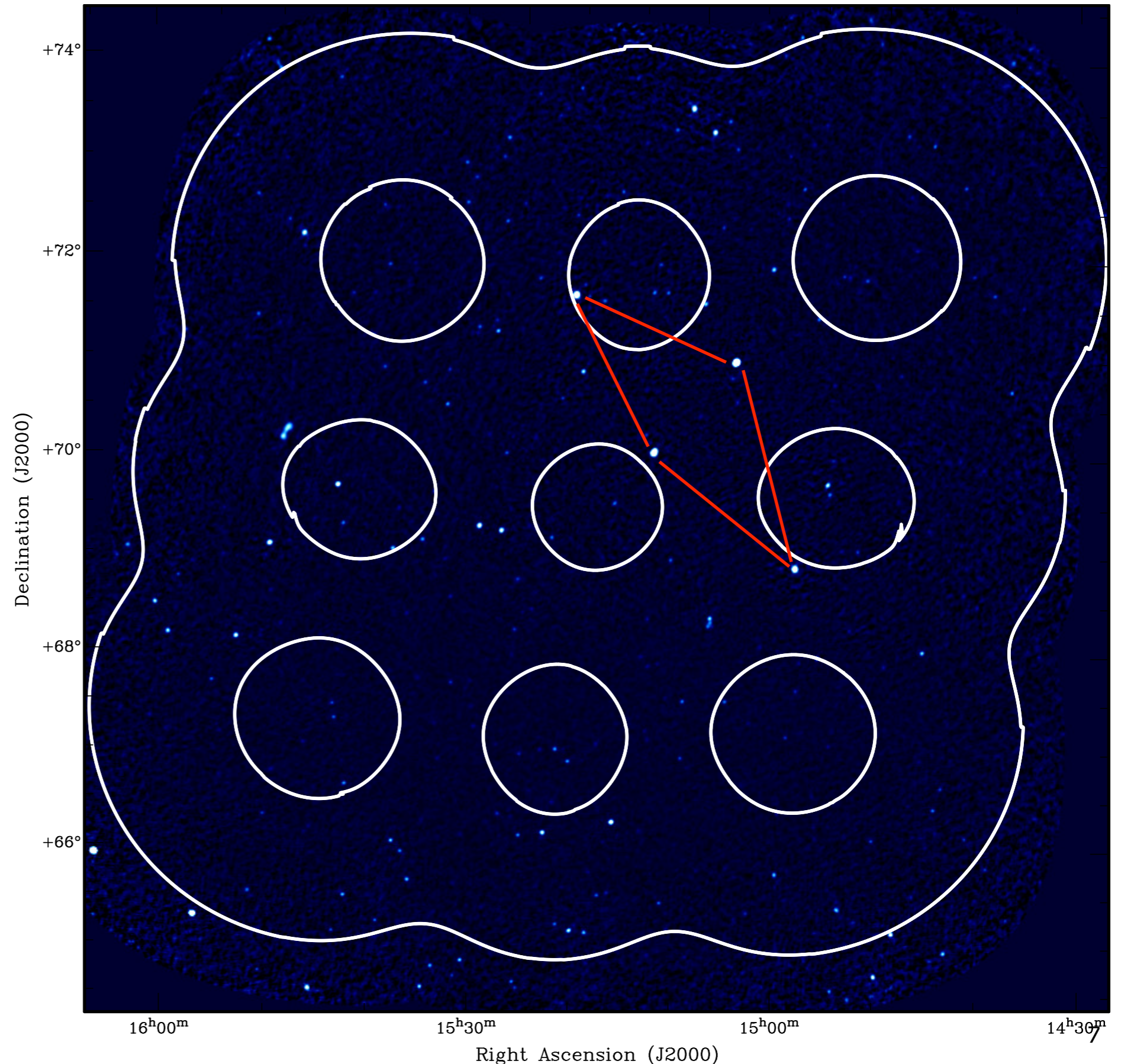


- Mosaicing fields in MSSS-HBA
- contours
15%, 75%
sensitivity



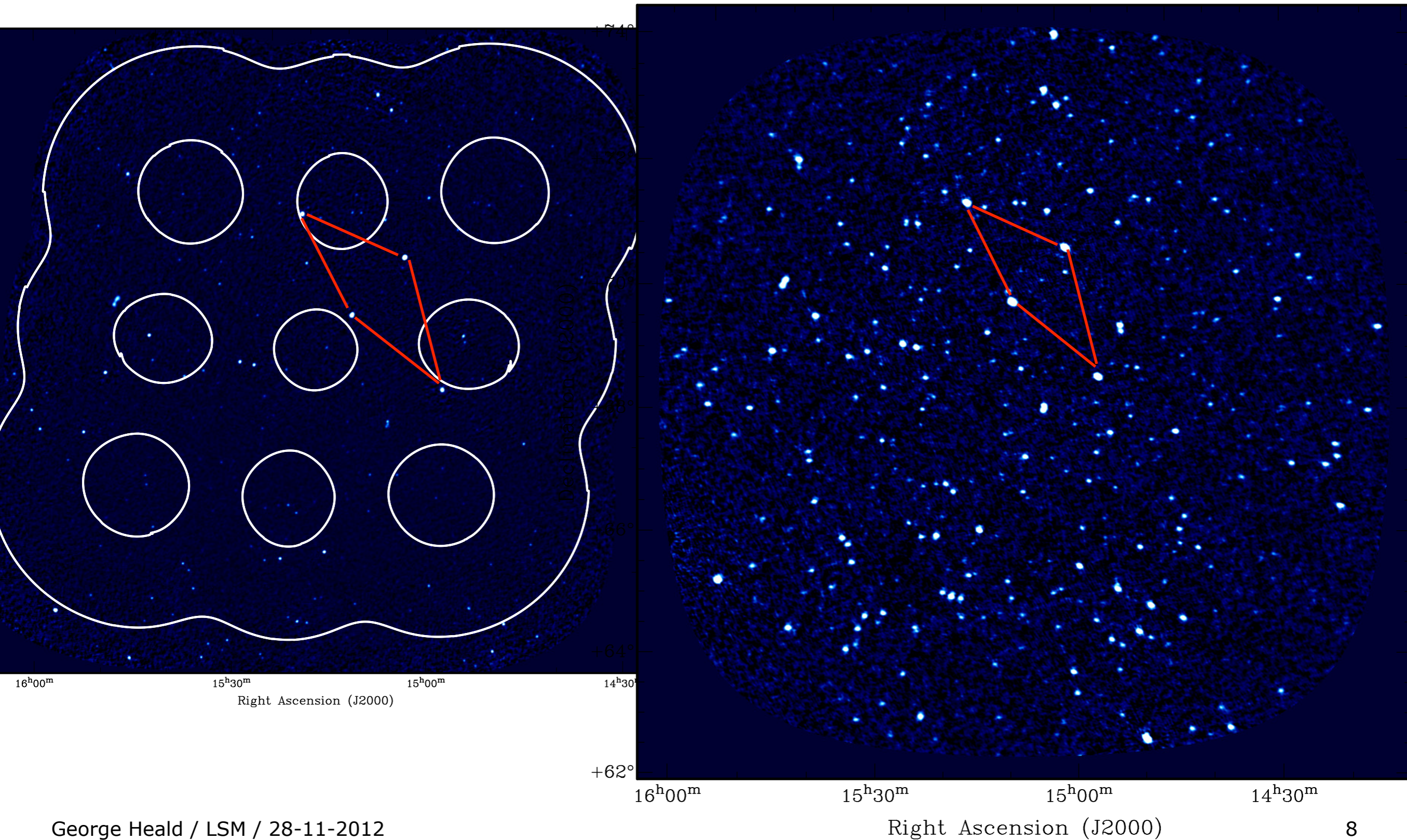


- Mosaicing fields in MSSS-HBA
- contours
15%, 75%
sensitivity





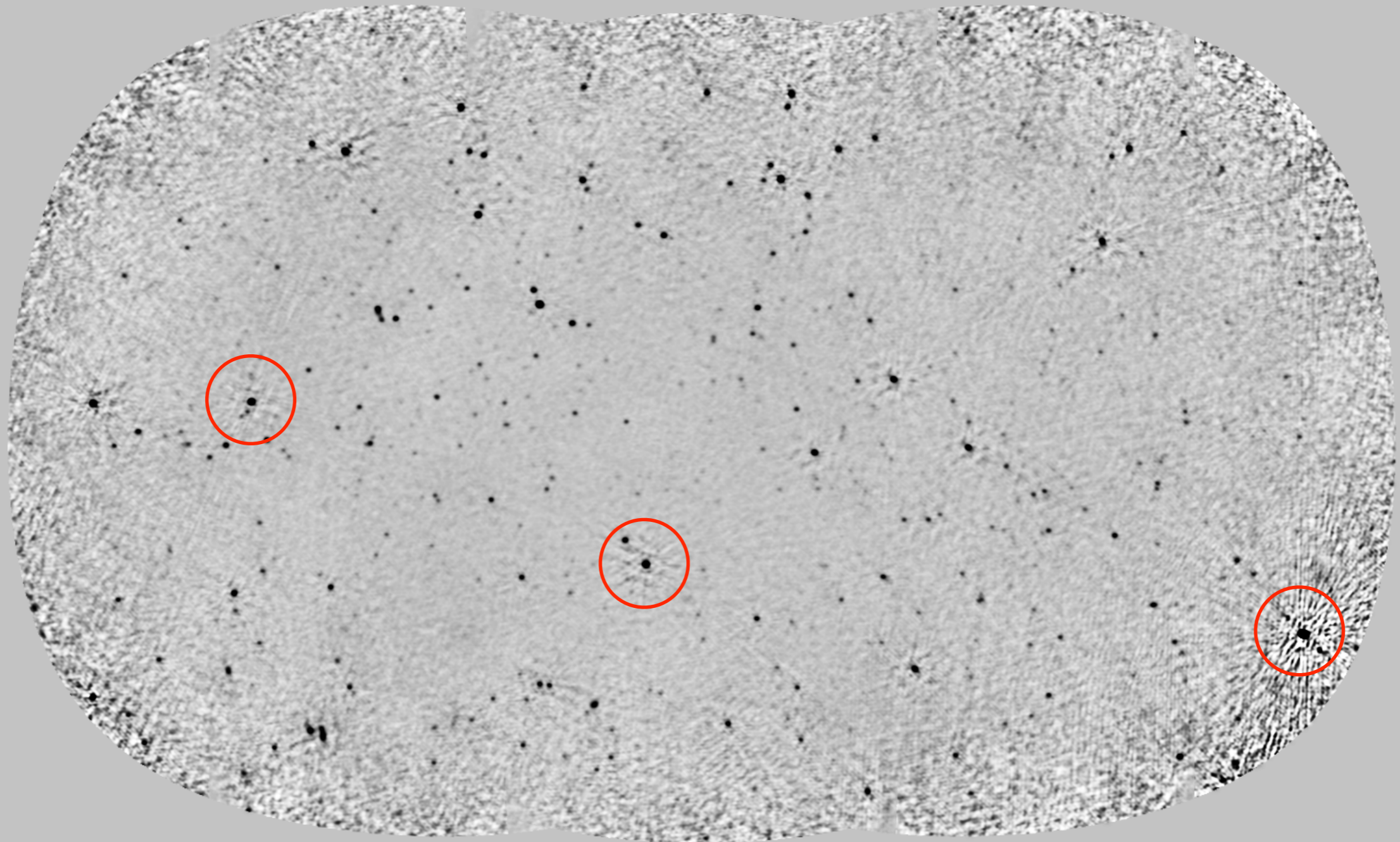
- MSSS Verification Field: HBA (left), LBA (right)





- Before 2-source per field "peeling"

H281+51 Three Field Mosaic

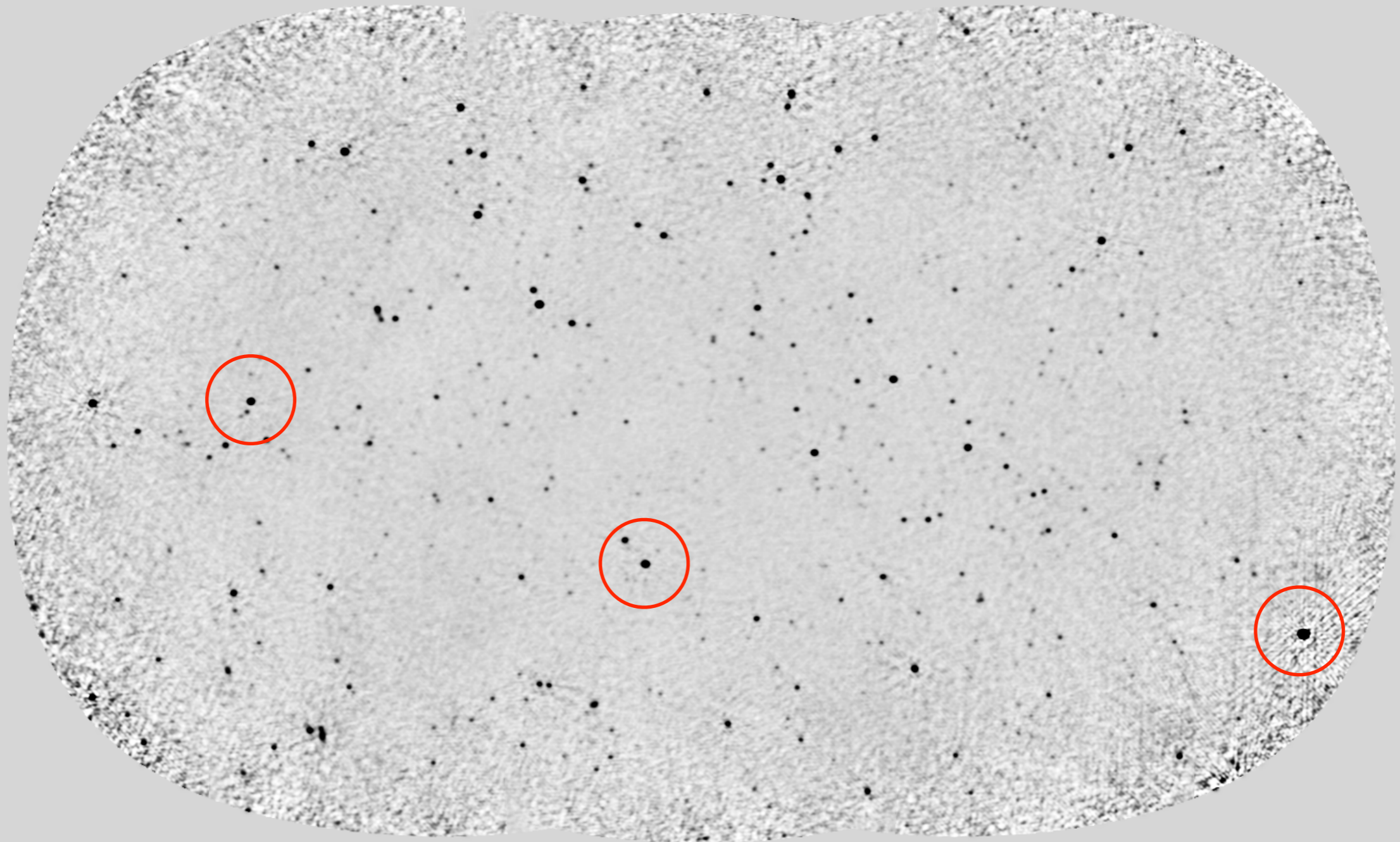


Stewart



- After 2-source per field "peeling"

H281+51 Three Field Mosaic Peeled



Stewart

- Comparing MSSS fluxes with NVSS, WENSS, VLSS:

