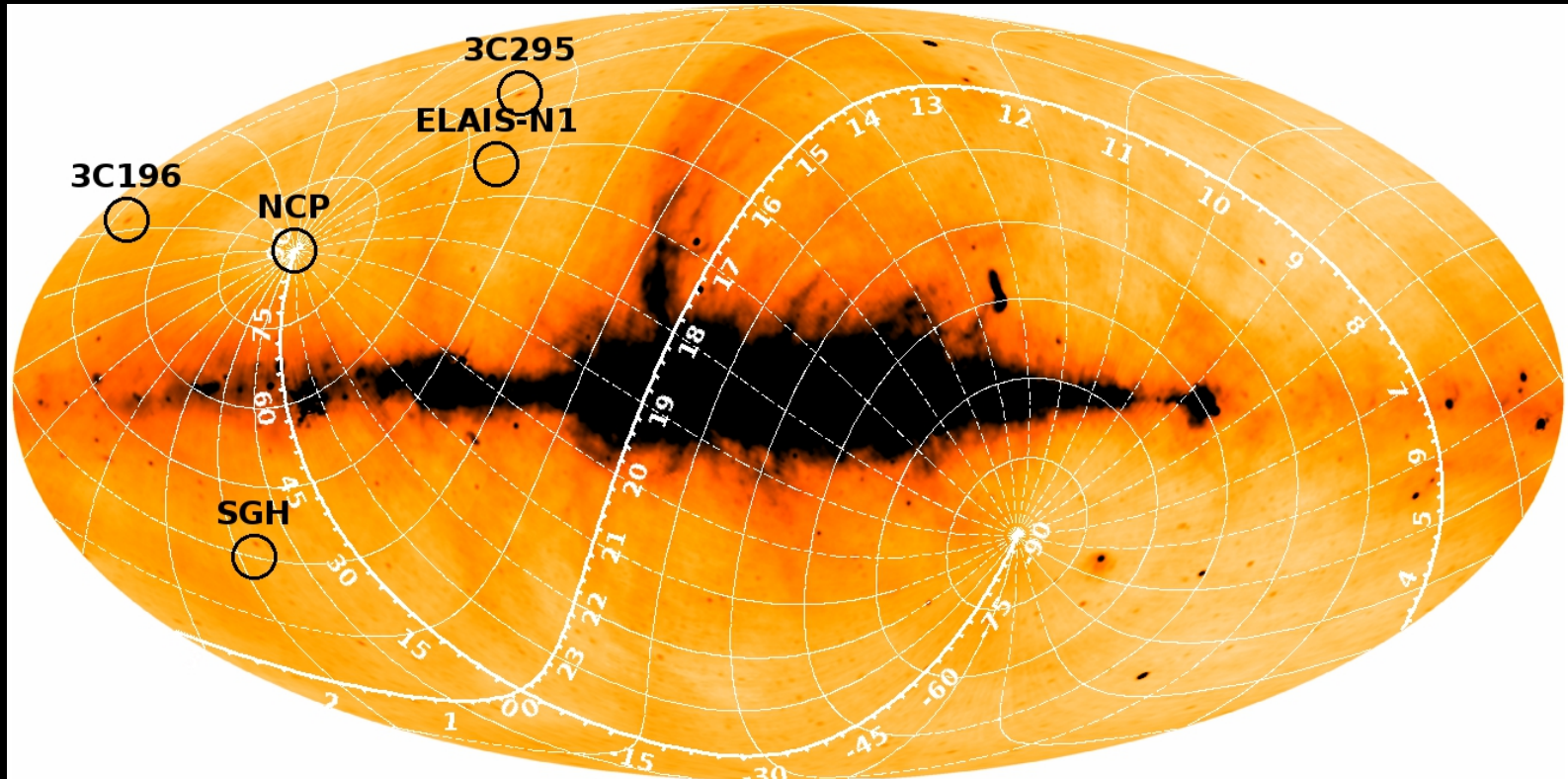


Polarimetric results for the ELAIS field

Vibor Jelić

LOFAR-EoR experiment: **observations**



- LOFAR – HBA observation @ 138 – 185 MHz
July 2012, 7h, 244 sb, CR+RS stations (55)

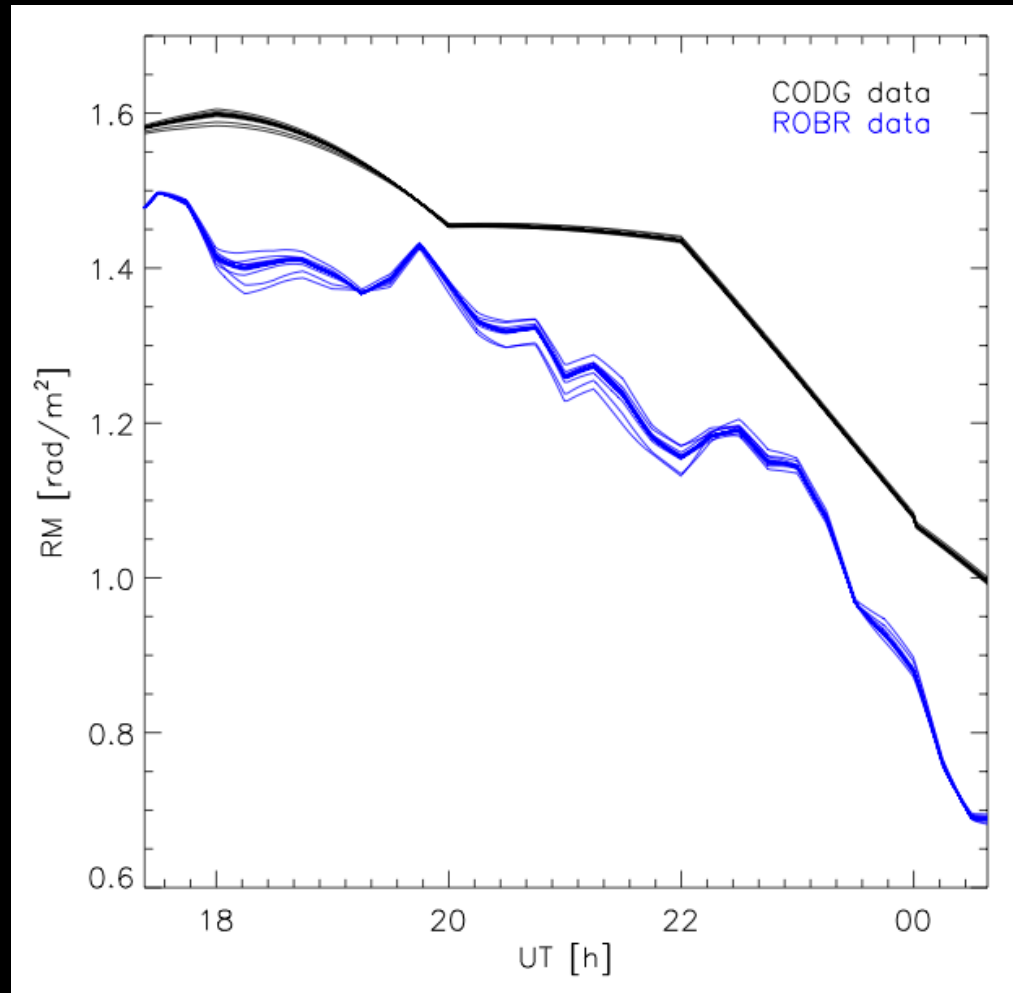
LOFAR-EoR experiment: Elais N1 field

1ch, 10sec
(AOflagger, BBS, CASA img)

RMwriter (M. Mevius)

BBS: FR correct step

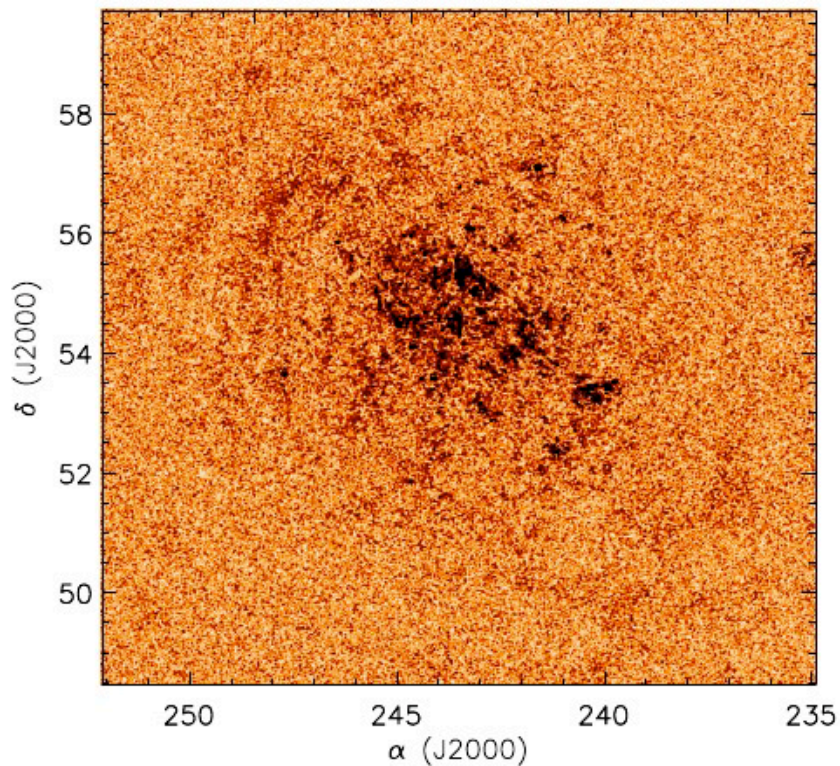
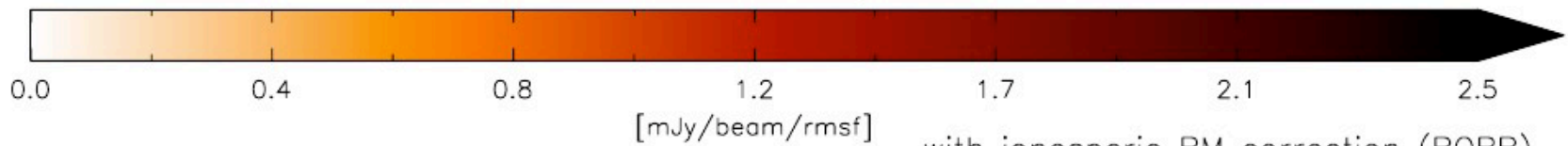
RMclean (M. Bell)



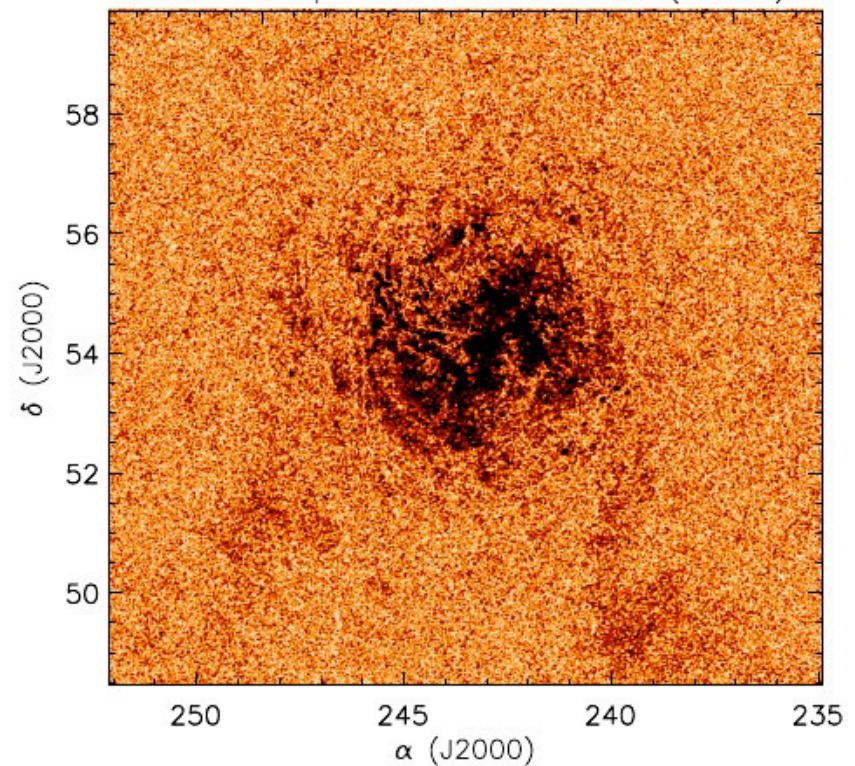
LOFAR-EoR experiment: Elais N1 field

ELAIS-N1 FIELD AT FARADAY DEPTH OF

$$\Phi = +0.5 \text{ rad/m}^2$$



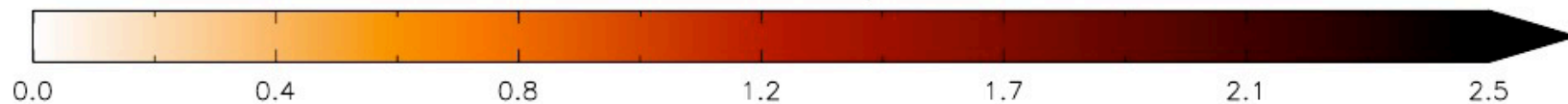
with ionospheric RM correction (ROBR)



LOFAR-EoR experiment: Elais N1 field

ELAIS-N1 FIELD AT FARADAY DEPTH OF

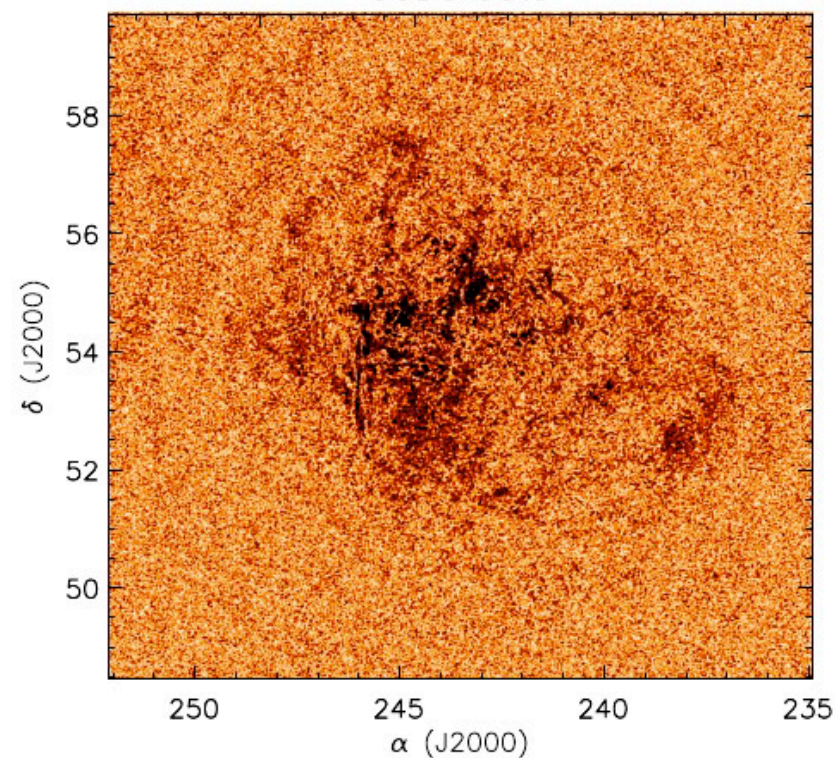
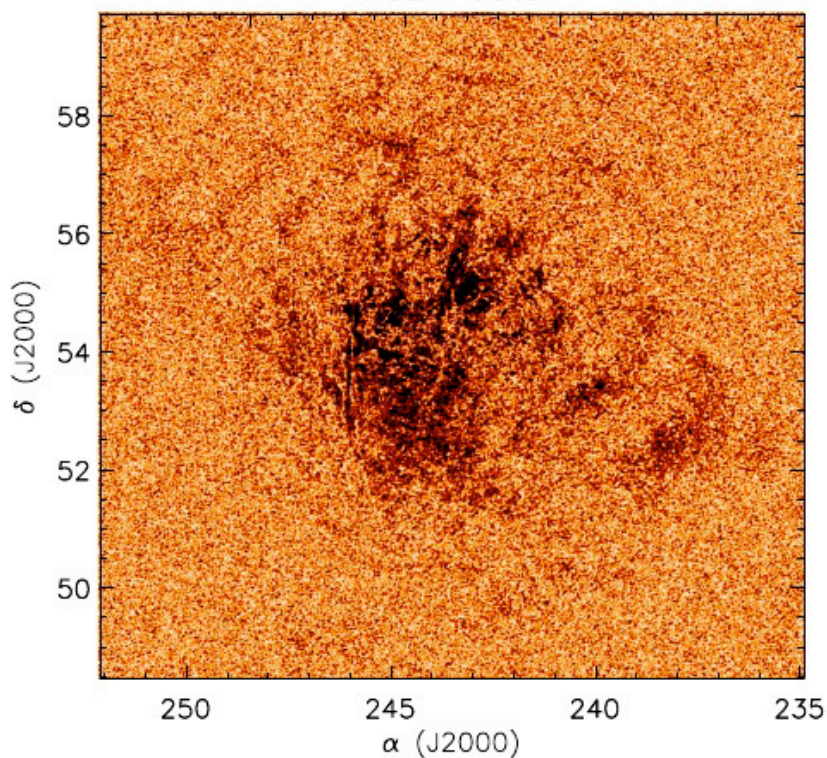
$$\Phi = +2.0 \text{ rad/m}^2$$



[mJy/beam/rmsf]

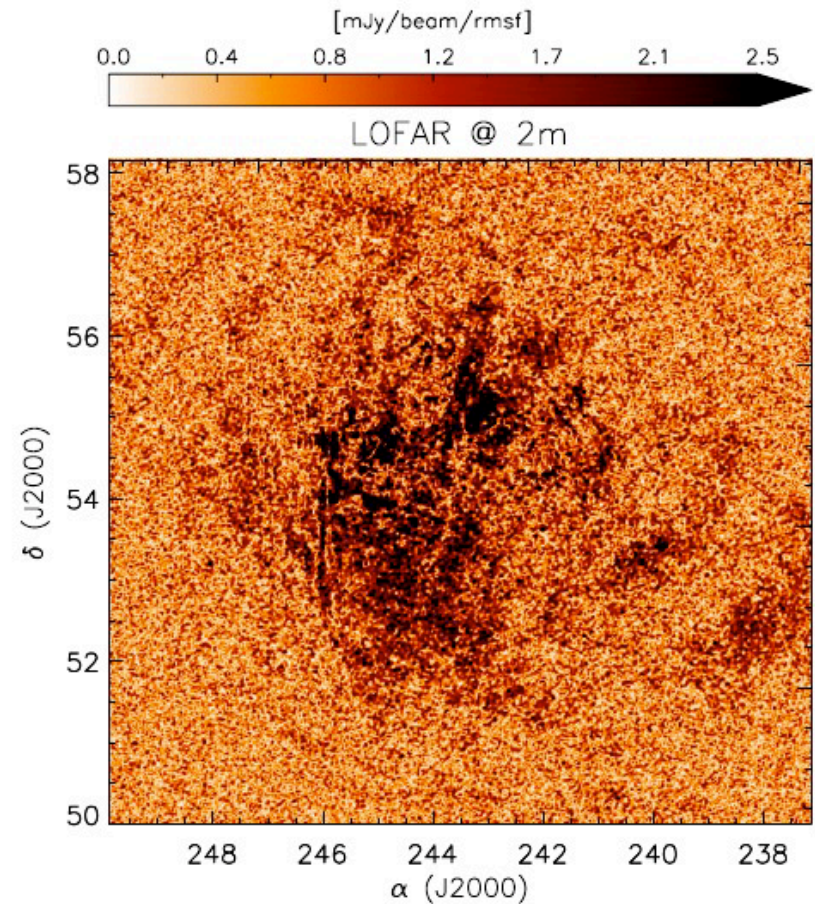
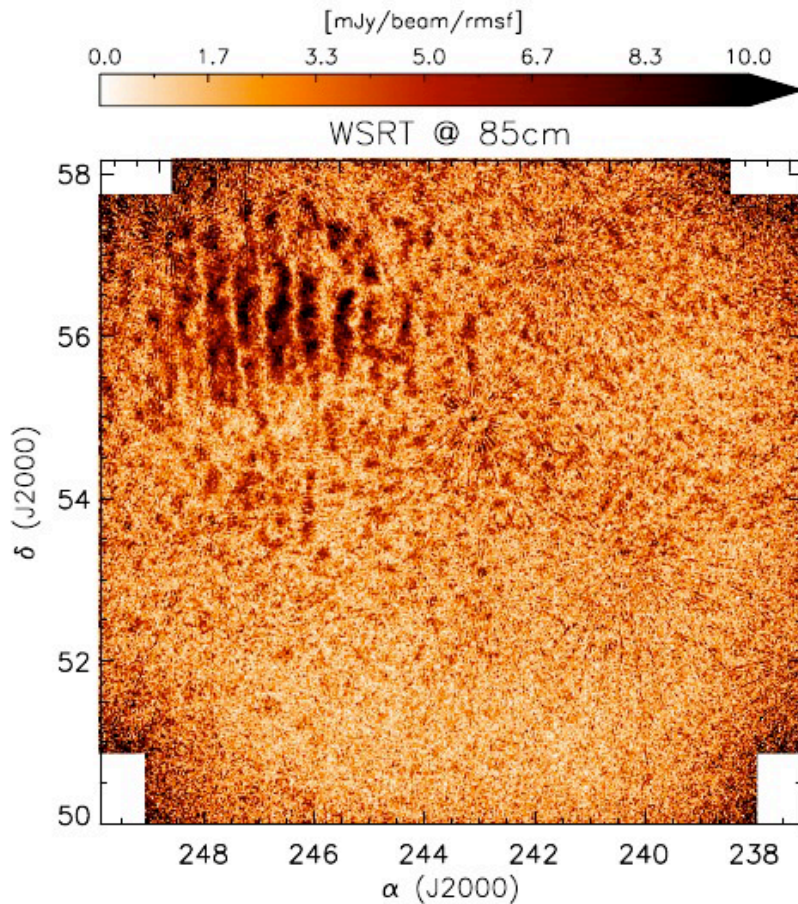
ROBR data

CODG data



LOFAR-EoR experiment: Elais N1 field

ELAIS-N1 FIELD AT FARADAY DEPTH OF
 $\Phi = +2.0 \text{ rad/m}^2$



LOFAR-EoR experiment: Elais N1 field

