

"CS1" Status

20 June 2007

Menno Norden

CS008

CS010

CS001 CS016

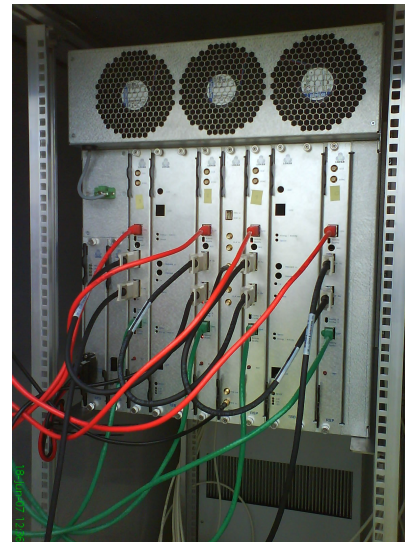


HBA status

- ◆ 17 Poor single dipoles are removed from the field
 - ⊕ Repaired and tested in Dwingeloo
 - ⊕ Placement today by WSRT team
- ◆ Humidity & Temperature cycling test
 - ⊕ RF switches could fail at high humidity level
 - ⊕ Test with four frontends in Climate Chamber

RSP III status

- ◆ 4 RSP III boards placed in CS001c
 - ⊕ Subband statistics [OK]
 - ⊕ Beamlet statistics on a single board [OK]
 - ⊕ Beamlet statistics between 4 RSP boards is not correct working
 - ⊕ Same setup will be made Dwingeloo for testing and debugging the HW/SW



Transient Buffer Boards

- ◆ 2 TBB boards are available
 - ⊕ Gijs is testing the TBB boards in CS001t



CEP News

- ◆ Lifs002 storage cluster available for usage
 - ⊕ Missing RAID card is placed
 - ⊕ Is tested during the whole weekend
 - ⊕ Stable performance during writing the whole array

Info: Chris Broekema

Question: Location of P2000 transmitter?

- ◆ Use the HBA tiles to find the closest P2000 station

