

# Flux Offsets in All-Sky Maps

- o Simulate data with MeqTrees/Siames
- o Start with CS1 dataset (21 hrs)
- o Use sky model from VLSS catalog

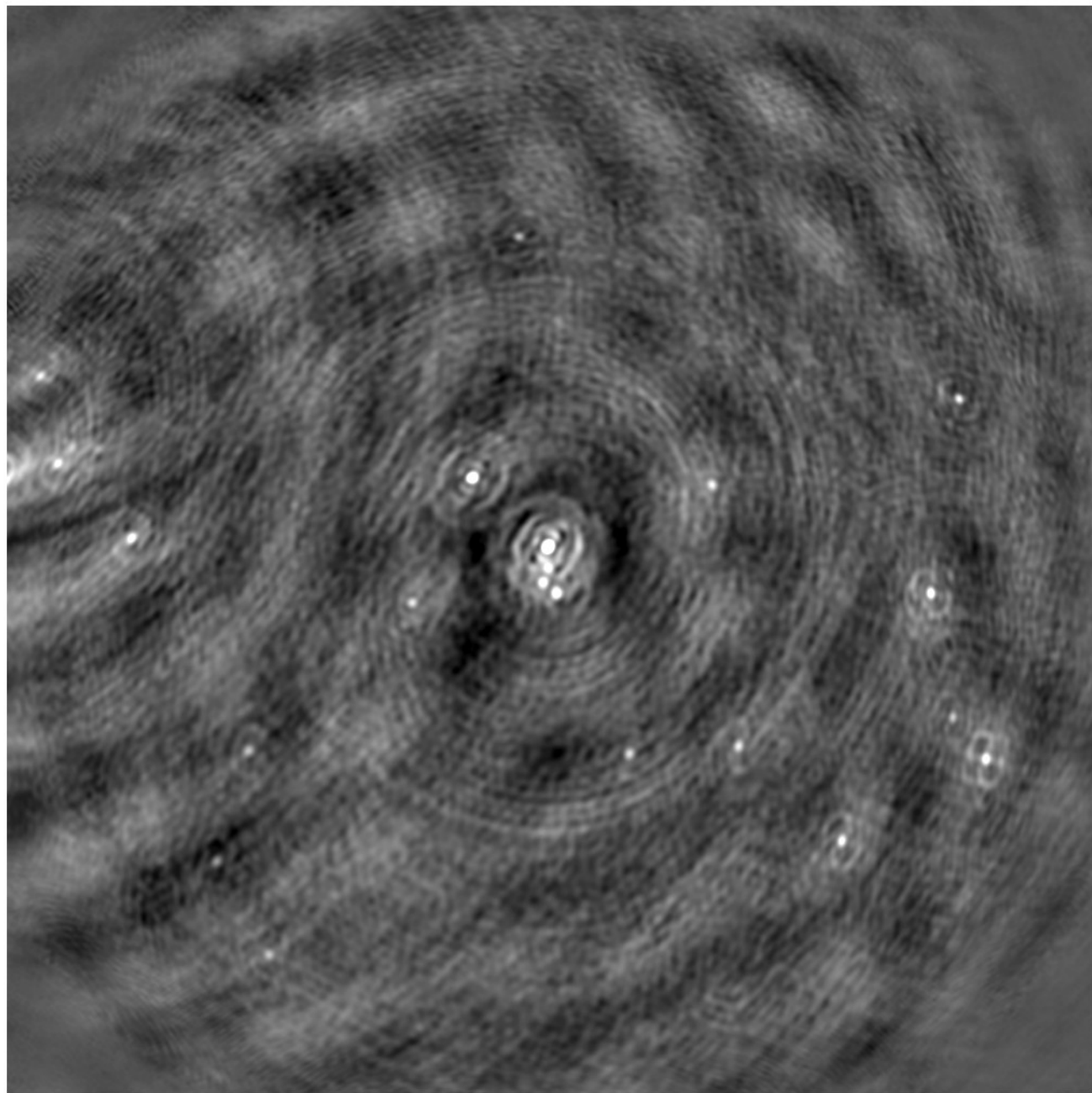


Image from CS1 simulation with **no** beam

Including beam: Flux changes by  $\sim 4\times$ , similar to observed offset.

E.g.:  
central src  
with beam => 66.1138  
without => 231.223

northeast src  
with => 26.7444  
without => 123.734

northwest src  
with => 10.5844  
without => 45.4677

south src  
with => 20.9561  
without => 77.5401

Also, interesting new imager bug with 'msstr'!

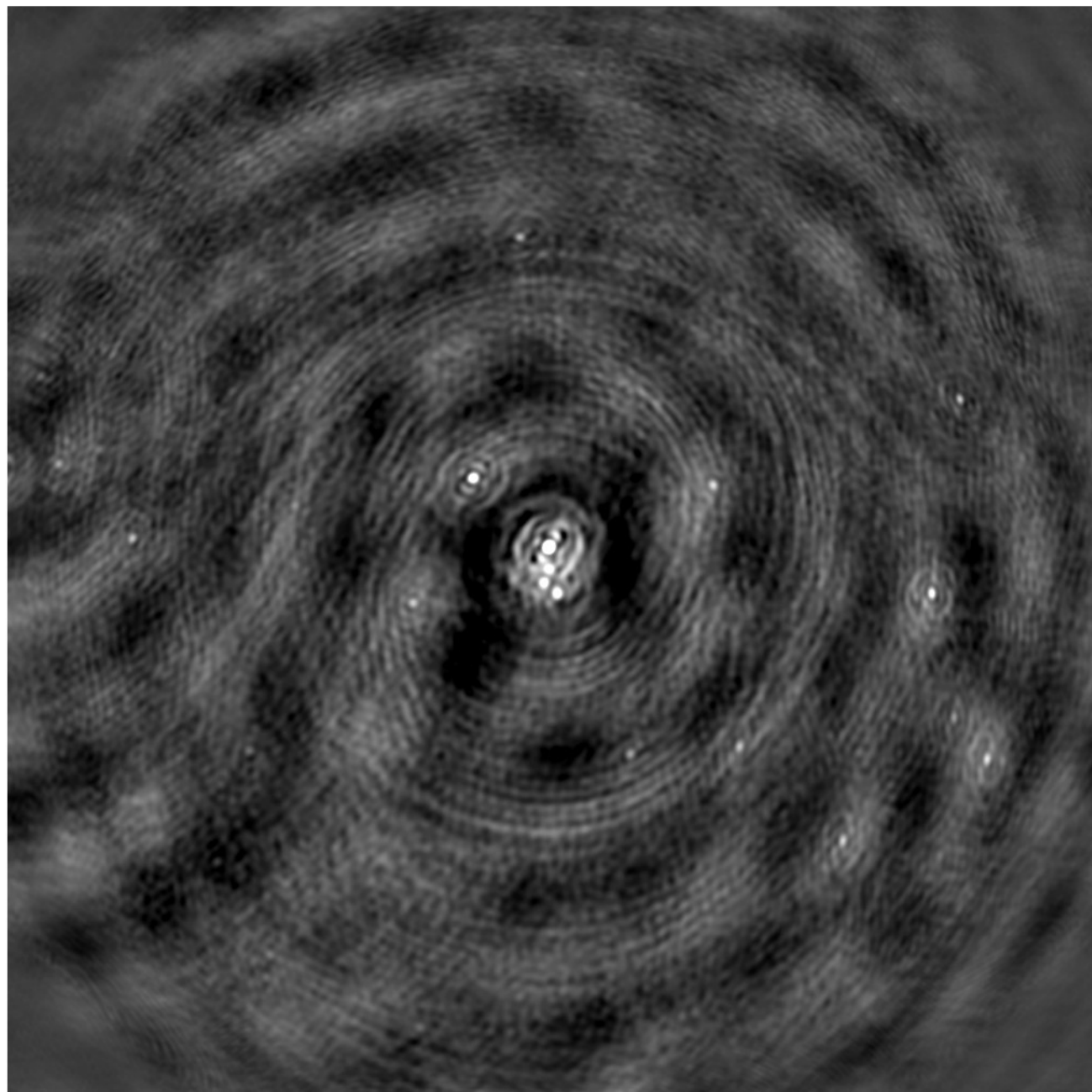


Image from CS1 simulation **with** beam