

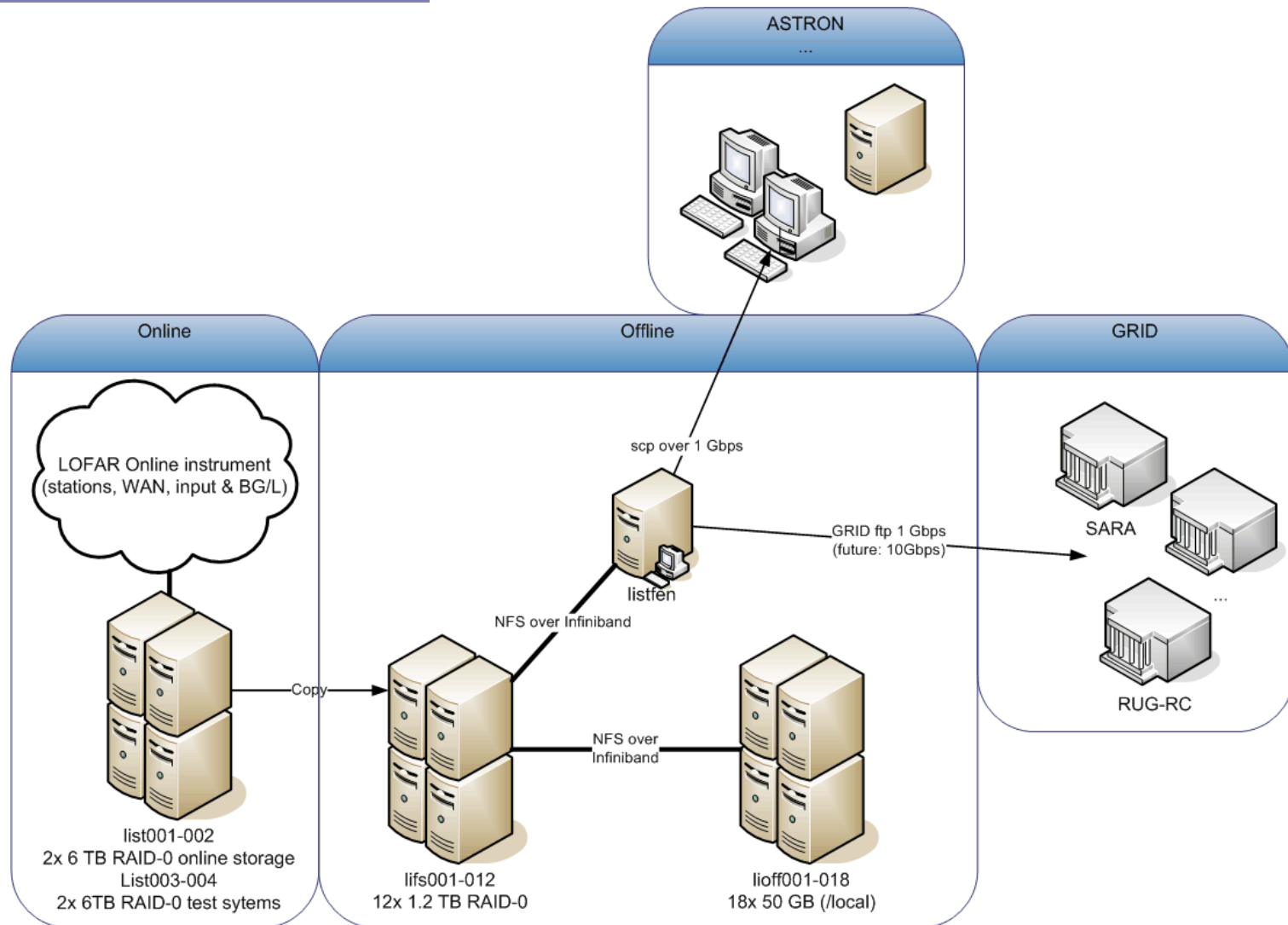
CS1 archive/grid & Plans for CS1 operation

Hanno Holties



CS1 Meeting Dwingeloo, October 11th 2007

Current CS1 storage situation



Current data flow correlated data

- ◆ Observation → Online storage (MS)
- ◆ Copy → Offline storage (MS)
- ◆ Prepare for archive → Offline /data/archive (tar)
- ◆ Copy to archive → GRID (tar)
- ◆ Clean Up...

Information sources: Observation Catalog

public.dataproduct.catalog_of_observation - Lofar Operations Wiki - Microsoft Internet Explorer

Address: http://www.lofar.org/operations/doku.php?id=public.dataproduct.catalog_of_observation

L2007_03463	27July07	24	lifs009	16	36	200	AIPS	NCP	LBA 38-60MHz CS001 RCU9 dead	input section) test of new CEP system (without input section)	yes
L2007_03453	27July07	0.1	lifs010	16	36	200	TBD	zenith	LBA meteor trails seen	looking for meteor trails with 21ms time resolution LBA	keep
L2007_03447	26July07	0.1	lifs010	16	3	200	TBD	zenith	LBA found reflections from planes	looking for meteors LBA	No?
L2007_03389	22July07	12.5	lifs010	16	36	200	TBD	NCP	Normal S/N ratio, no input section at CEP	LBA	TBD
L2007_03388	20July07	48	lifs010	16	36	200	TBD	NCP	Bad S/N ratio, low overall visibility amplitudes. Except for this, everything went fine.	LBA	TBD
L2007_03289	13July07	24	lifs008	12	36	200	TBD	NCP	missing CS001 (RSPIII), later observations failed	LBA	TDB
L2007_03172	07July07	24	lifs008/brentjens	4	36	200	TBD	Zenith	Every antenna was tuned to a DIFFERENT set of 36 subbands, 1 second integration time. Several antenna failed. May need to be re-observed later	RFI scan HBA high (210-250 MHz), subbands 219-362	keep
L2007_03171	06July07	24	lifs008/brentjens	4	36	200	TBD	Zenith	Every antenna was tuned to a DIFFERENT set of 36 subbands, 1 second integration time. Several antennae failed. May need to be re-observed later	RFI scan HBA high (210-250 MHz), subbands 75-218	keep
L2007_03018	30June07	24	lifs008/brentjens	4	48	160	TBD	Zenith	Every antenna was tuned to a DIFFERENT set of 48 subbands, 1 second integration time.	RFI scan HBA high (170-230 MHz), subbands 160-351	keep
L2007_03017	29June07	24	lifs008/brentjens	4	36	200	TBD	Zenith	Every antenna was tuned to a DIFFERENT set of 36 subbands, 1 second integration time.	RFI scan HBA low (110-190 MHz), subbands 172-29	keep
L2007_02925.bad	22June07	24	grid	4	36	200	TBD	Zenith	problems. No CEP data for 23-24june	HBA RFI scans	TBD
									Every antenna was tuned to a DIFFERENT set of 36	RFI scan HBA low	

Information sources: 'lofstorman'

- ◆ Script for finding location(s) of datasets
 - ⊕ On LISTFEN server
 - ⊕ Lists of datasets (online/offline/archive/grid)
 - ⊕ Search for sequence number

```
holties@listfen: -
In on-line catalog:
In off-line catalog:
lifs001 /data/L2007_03678/L2007_03678_SB0.MS
lifs001 /data/L2007_03678/L2007_03678_SB1.MS
lifs001 /data/L2007_03678/L2007_03678_SB2.MS
lifs003 /data/L2007_03678/L2007_03678_SB3.MS
lifs003 /data/L2007_03678/L2007_03678_SB4.MS
lifs003 /data/L2007_03678/L2007_03678_SB5.MS
lifs005 /data/L2007_03678/L2007_03678_SB6.MS
lifs005 /data/L2007_03678/L2007_03678_SB7.MS
lifs005 /data/L2007_03678/L2007_03678_SB8.MS
In archive area:
lifs008 /data/archive/L2007_03678_SB0.MS.tar
lifs008 /data/archive/L2007_03678_SB1.MS.tar
lifs008 /data/archive/L2007_03678_SB2.MS.tar
lifs008 /data/archive/L2007_03678_SB3.MS.tar
lifs008 /data/archive/L2007_03678_SB4.MS.tar
lifs008 /data/archive/L2007_03678_SB5.MS.tar
lifs008 /data/archive/L2007_03678_SB6.MS.tar
lifs008 /data/archive/L2007_03678_SB7.MS.tar
lifs008 /data/archive/L2007_03678_SB8.MS.tar
In Grid catalog:
L2007_03678_SB0.MS.tar          2178 MB   Sep 24 15:58
L2007_03678_SB1.MS.tar          2178 MB   Sep 24 16:01
L2007_03678_SB2.MS.tar          2178 MB   Sep 24 16:04
L2007_03678_SB3.MS.tar          2178 MB   Sep 24 16:07
L2007_03678_SB4.MS.tar          2178 MB   Sep 24 16:11
L2007_03678_SB5.MS.tar          2178 MB   Sep 24 16:14
L2007_03678_SB6.MS.tar          2178 MB   Sep 24 16:17
L2007_03678_SB7.MS.tar          2178 MB   Sep 24 16:21
L2007_03678_SB8.MS.tar          2178 MB   Sep 24 16:24
/tmp/lofstorman1057.tmp lines 1-32/32 (END)
```

GRID resources

- ◆ SARA
- ◆ CIT Groningen
- ◆ Storage & computing
- ◆ “Virtual Organisation” LOFAR
 - ⊕ Groups: KSP’s & ops
 - ⊕ Requires personal GRID certificate

Planning operations

- ◆ LOFAR/WSRT console room
 - ⊕ Previously Oort room
 - ⊕ Operator
 - ⊕ Status Information
- ◆ CS1 operations October 29th
 - ⊕ Integration SAS/MAC
 - ⊕ Separation test/operational environment
- ◆ Official opening second half November
- ◆ Status updates & planning at this meeting

Further Information

- ◆ Operations WIKI

<http://www.lofar.org/operations>

→ Commissioning → Catalog of Observations

- ◆ Teun Grit, Hanno Holties