

# Roll out info

19 Dec 2007

Menno Norden



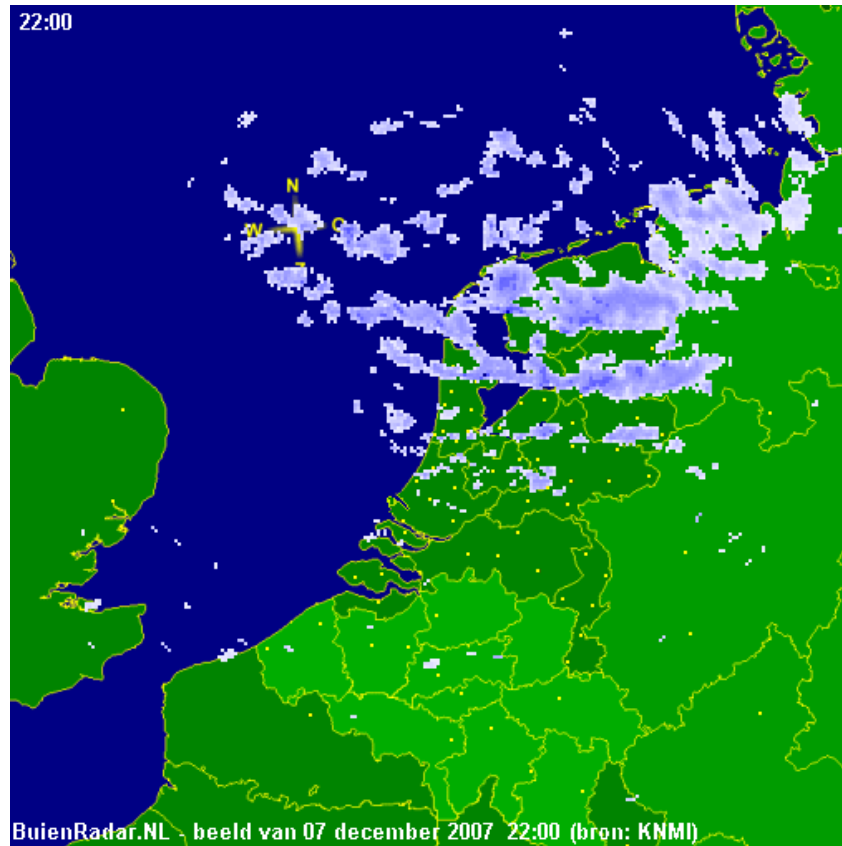
# Summary

---

- ◆ Rain test HBA Tile versus LBA
- ◆ Switch on/off individual Tile elements
- ◆ Abnormal sky image at CS-10

# Rain test results (HBA Tile versus LBA) CS010c

- ◆ Moderate and Heavy Rainfall 7 and 8 Dec 2007
- ⊕ Measurement start 9:37 UTC, 10sec int, 24 hours



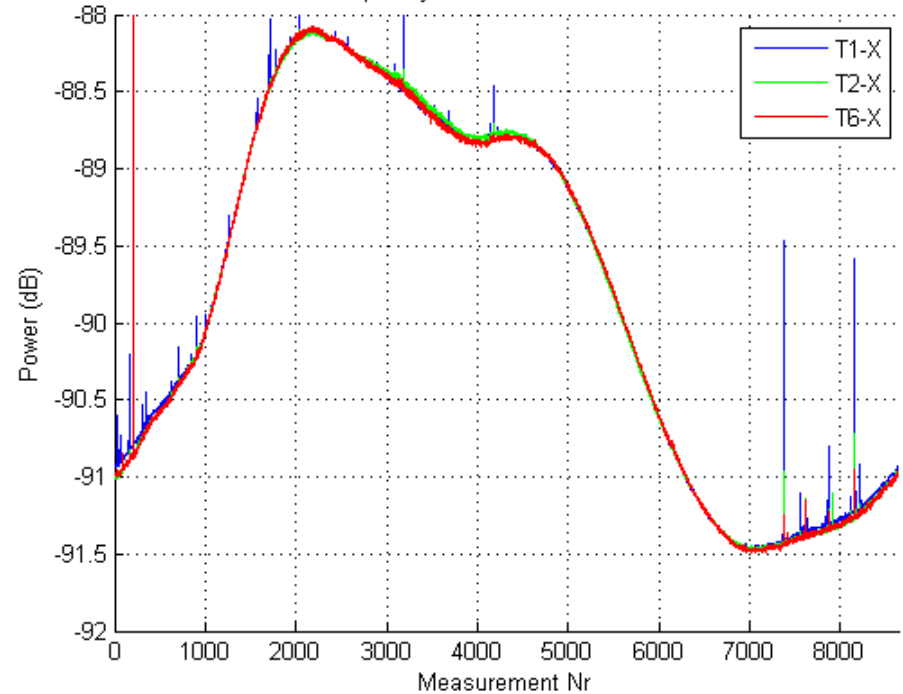
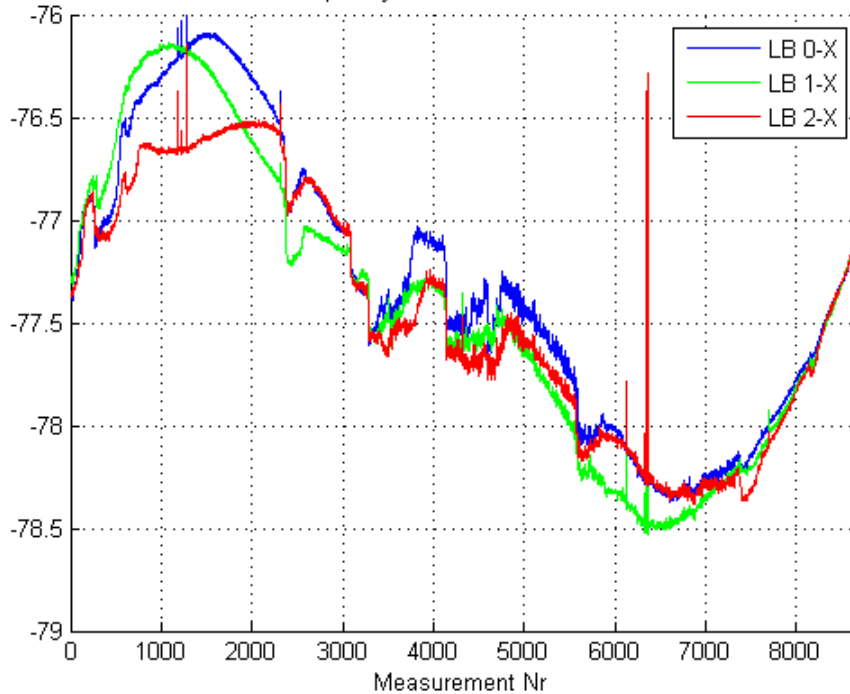
# LBA versus HBA CS010c

58 MHz

120 MHz

Frequency 58 MHz level corrected

Frequency 120 MHz level corrected



LBA X pol

0.5 dB dips

HBA X pol

No dips

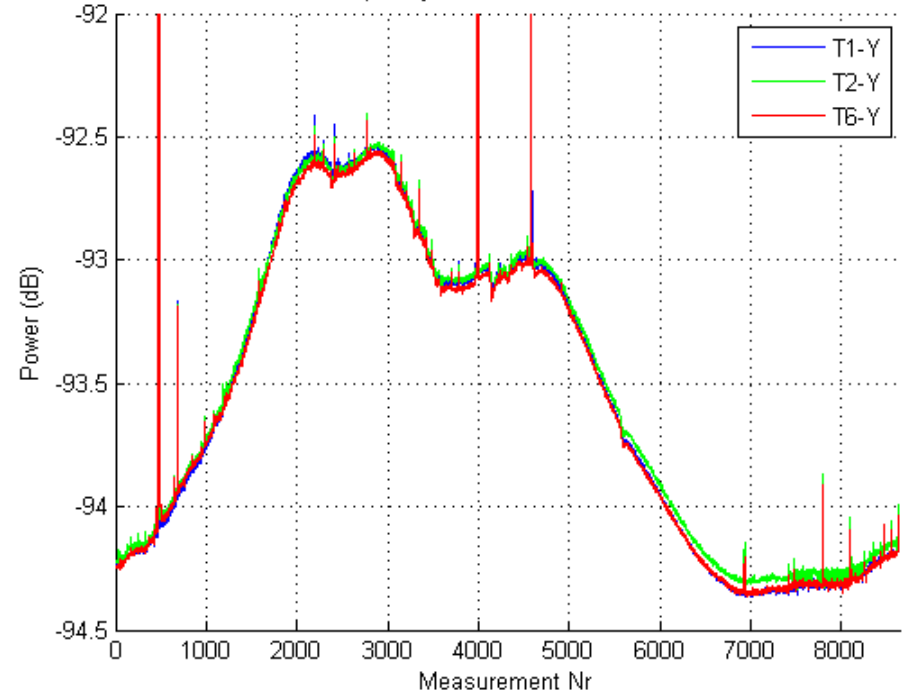
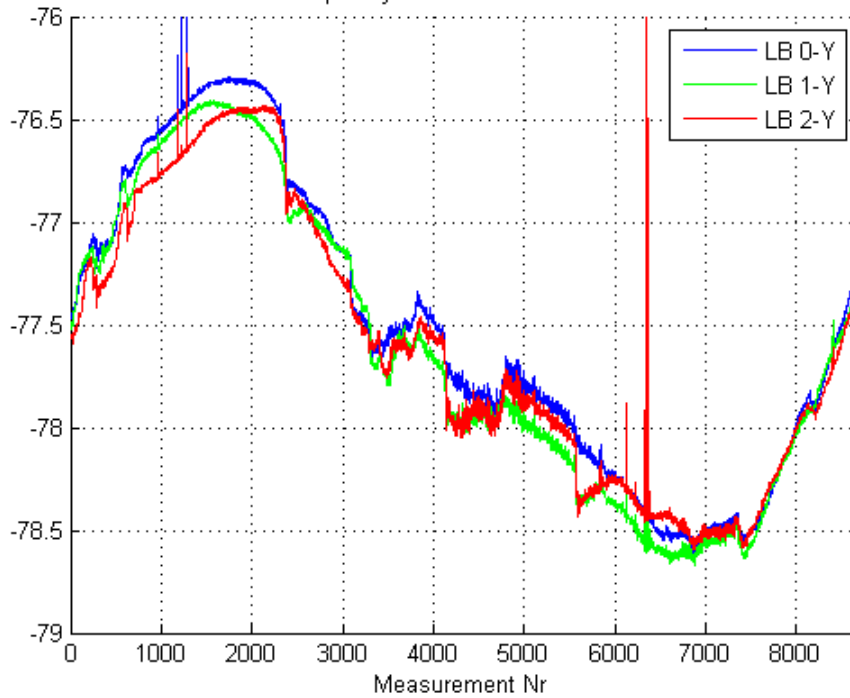
# LBA versus HBA CS010c

58 MHz

180 MHz

Frequency 58 MHz level corrected

Frequency 180 MHz level corrected



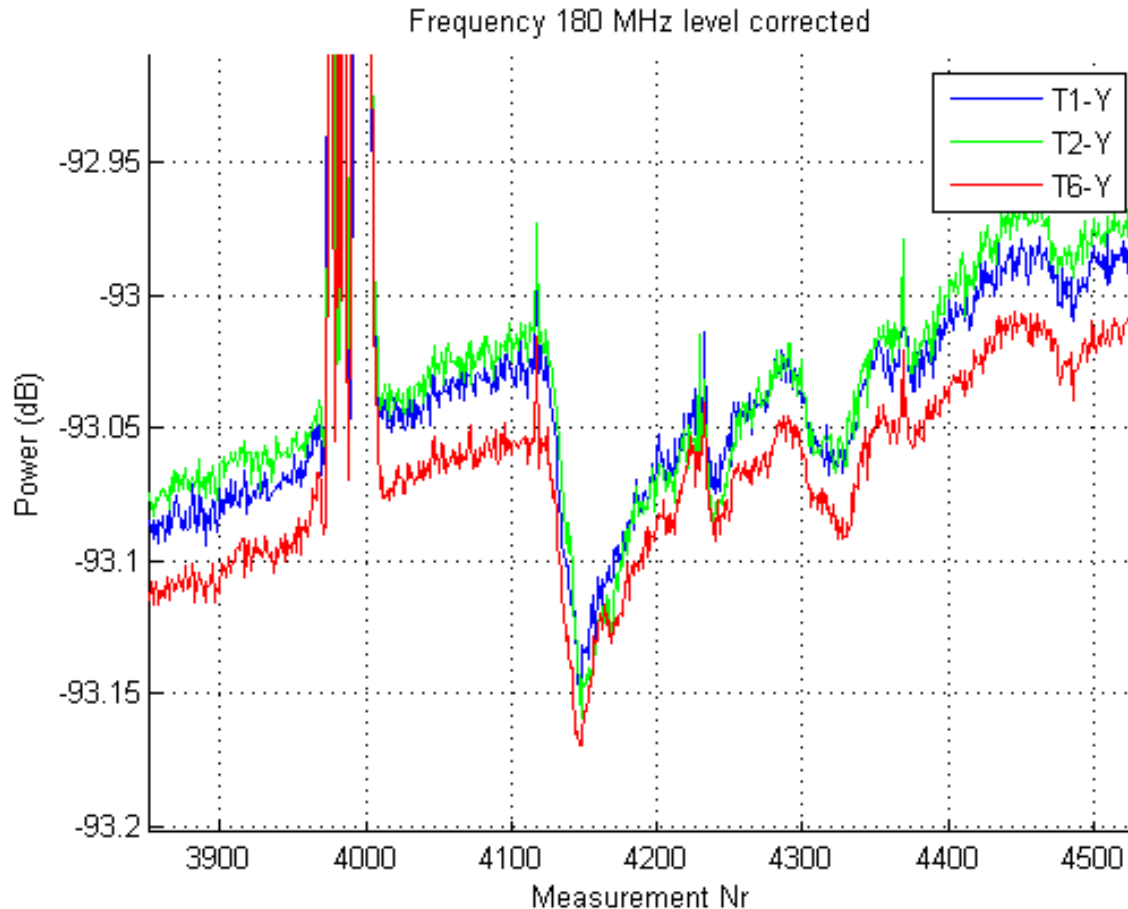
LBA Y pol

0.5 dB dips

HBA Y pol

0.1 dB dip

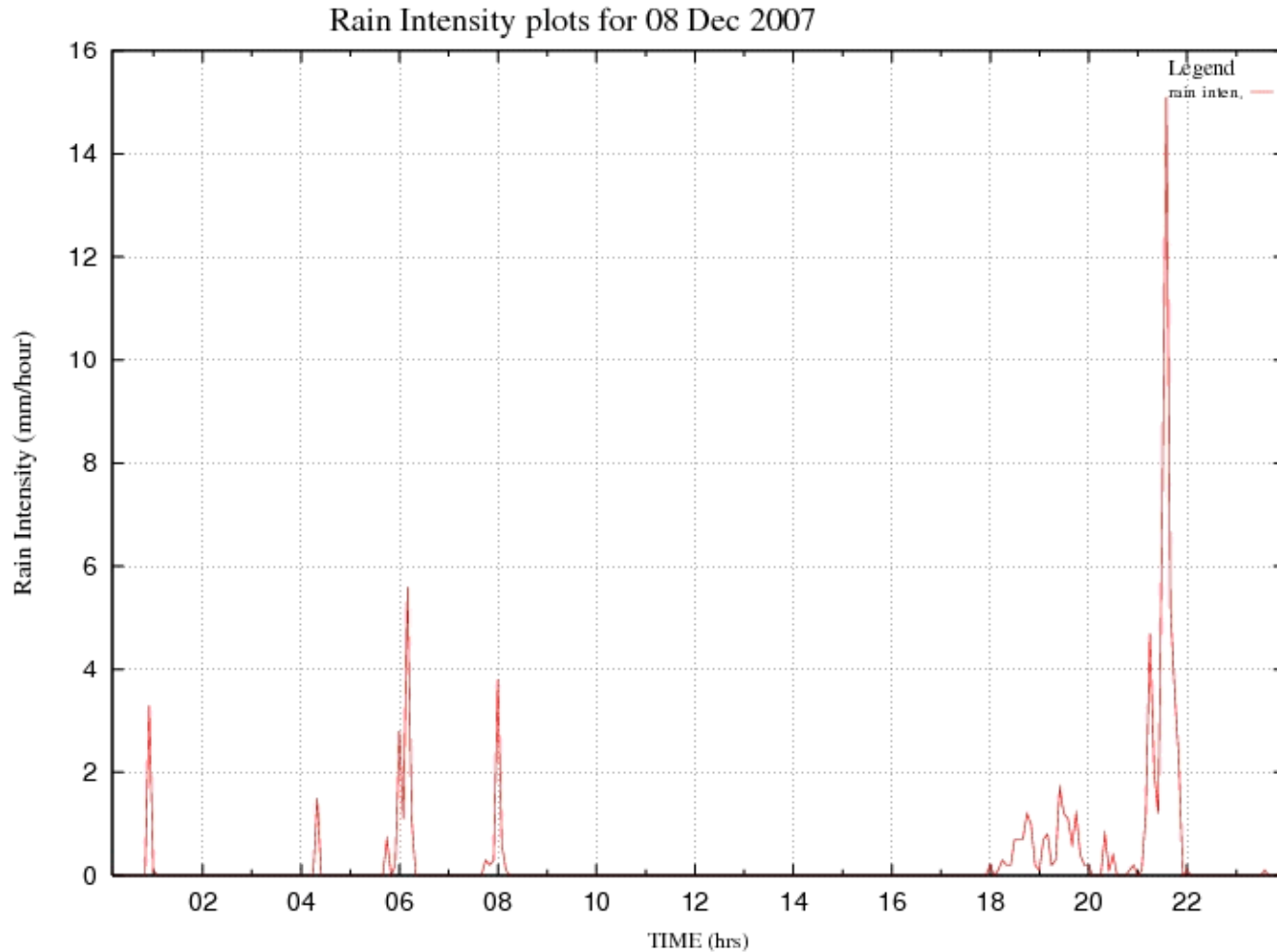
# LBA versus HBA CS010c



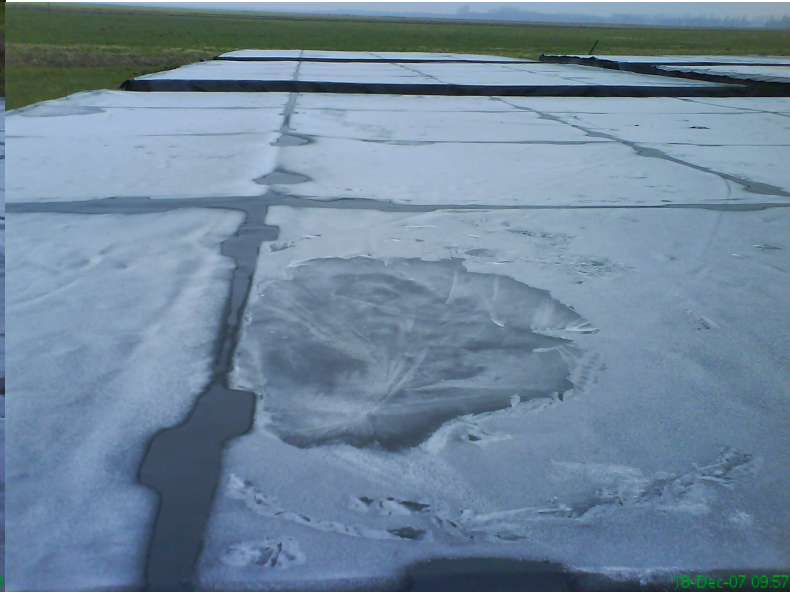
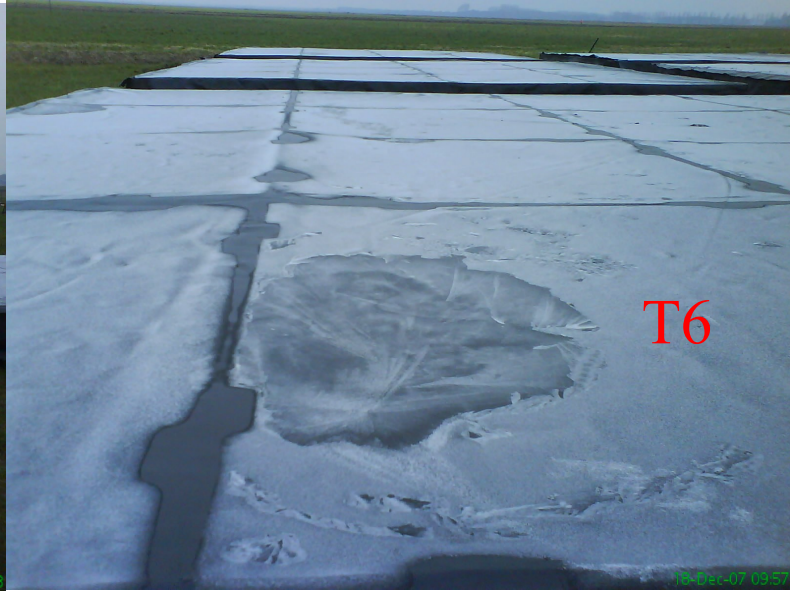
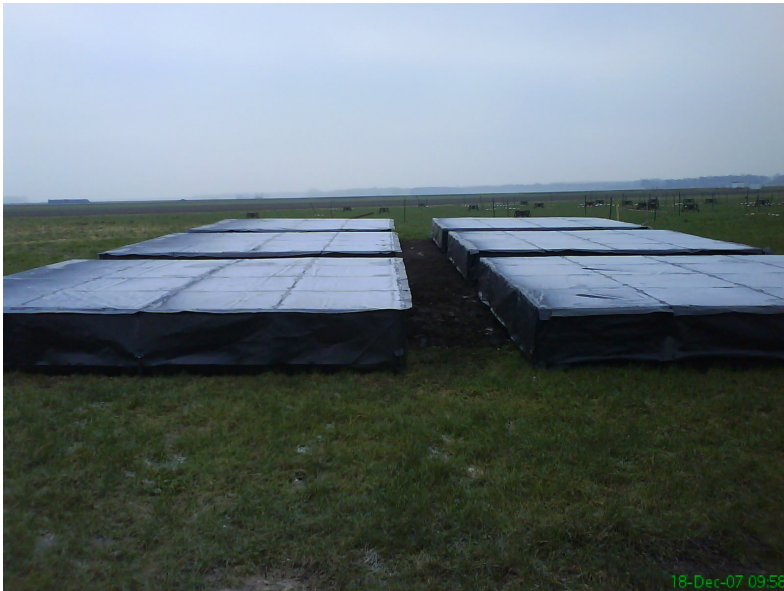
HBA Y pol

0.1 dB dip

# Rain intensity peak 15 mm/hour

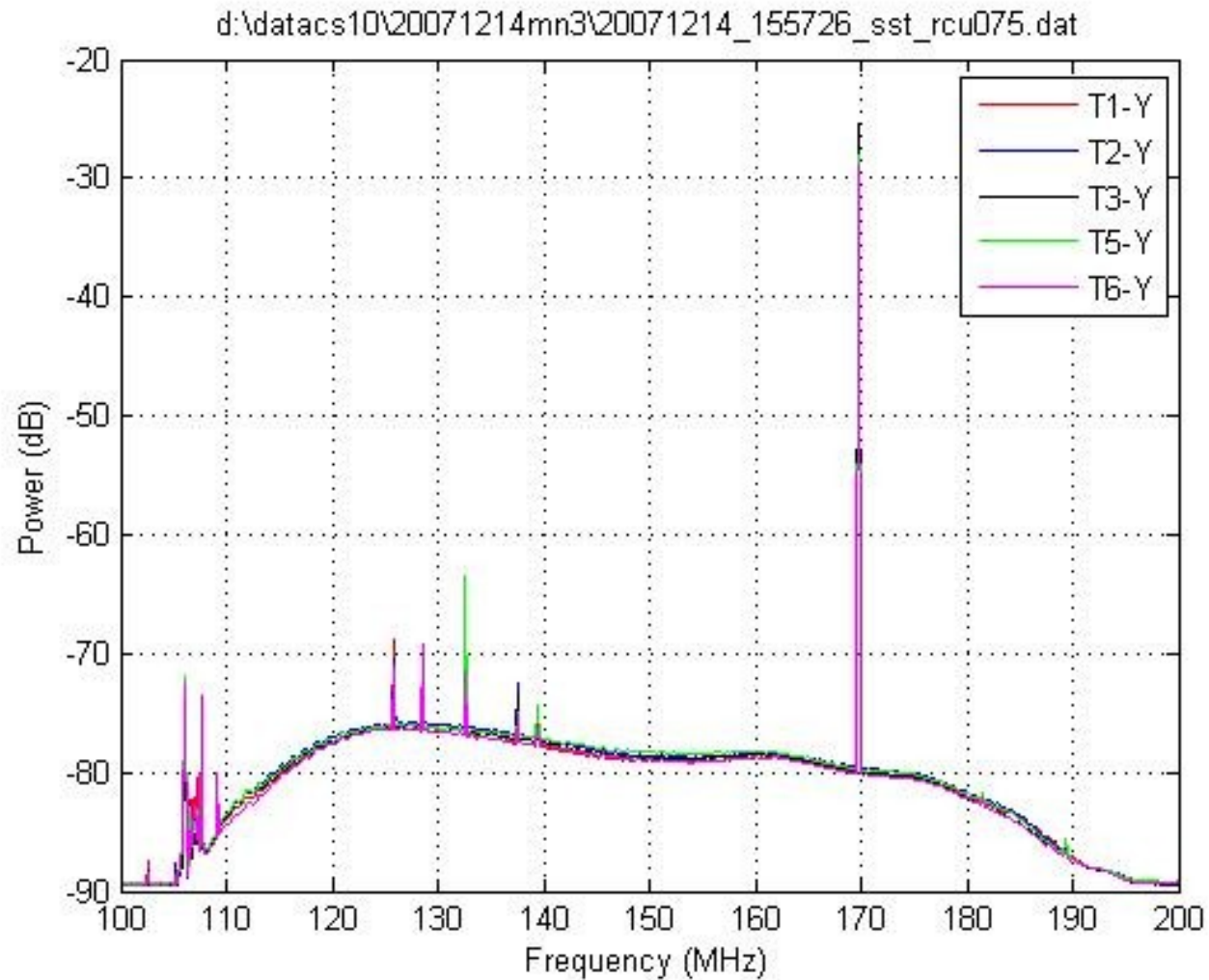


# Rain intensity peak 15 mm/hour

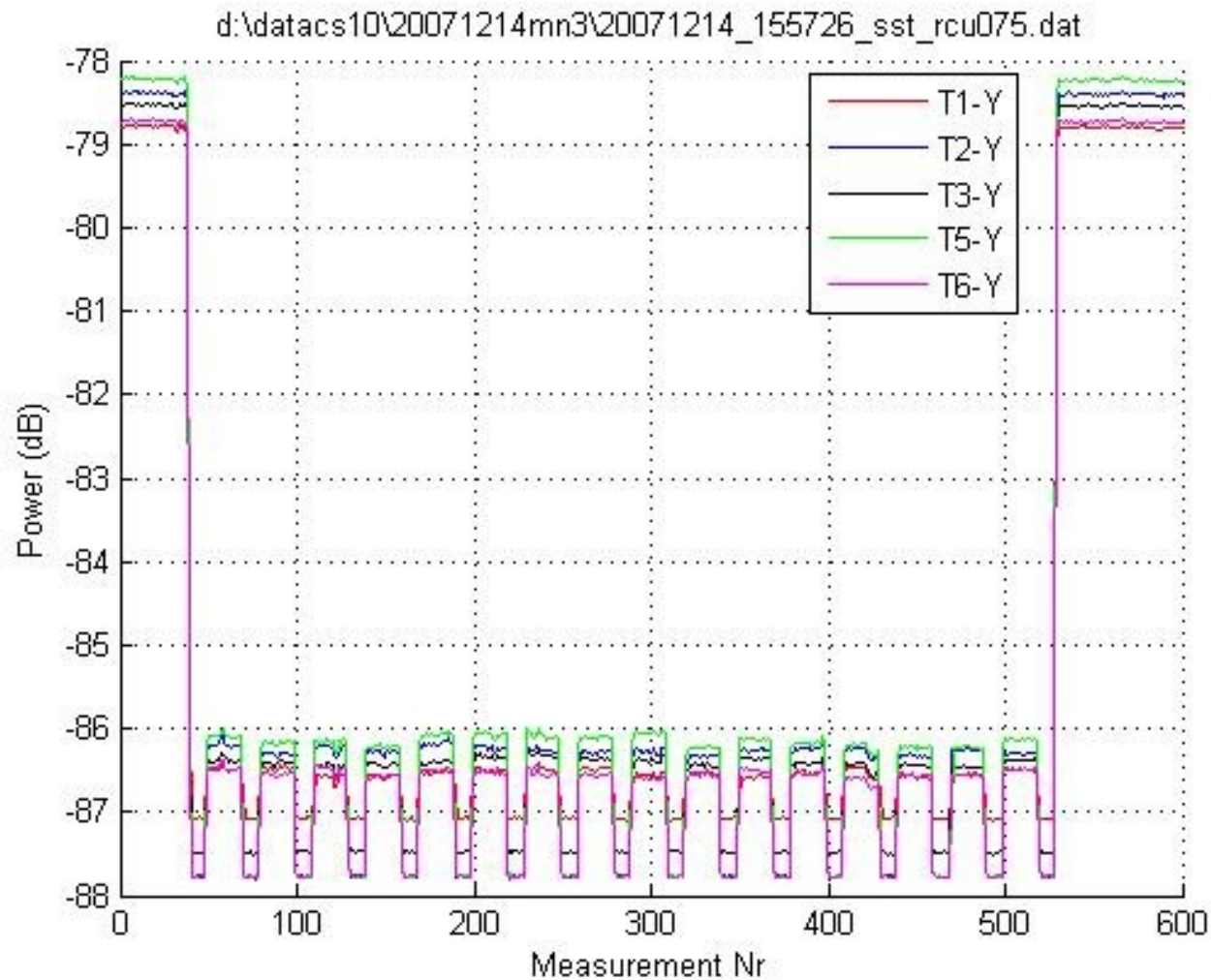




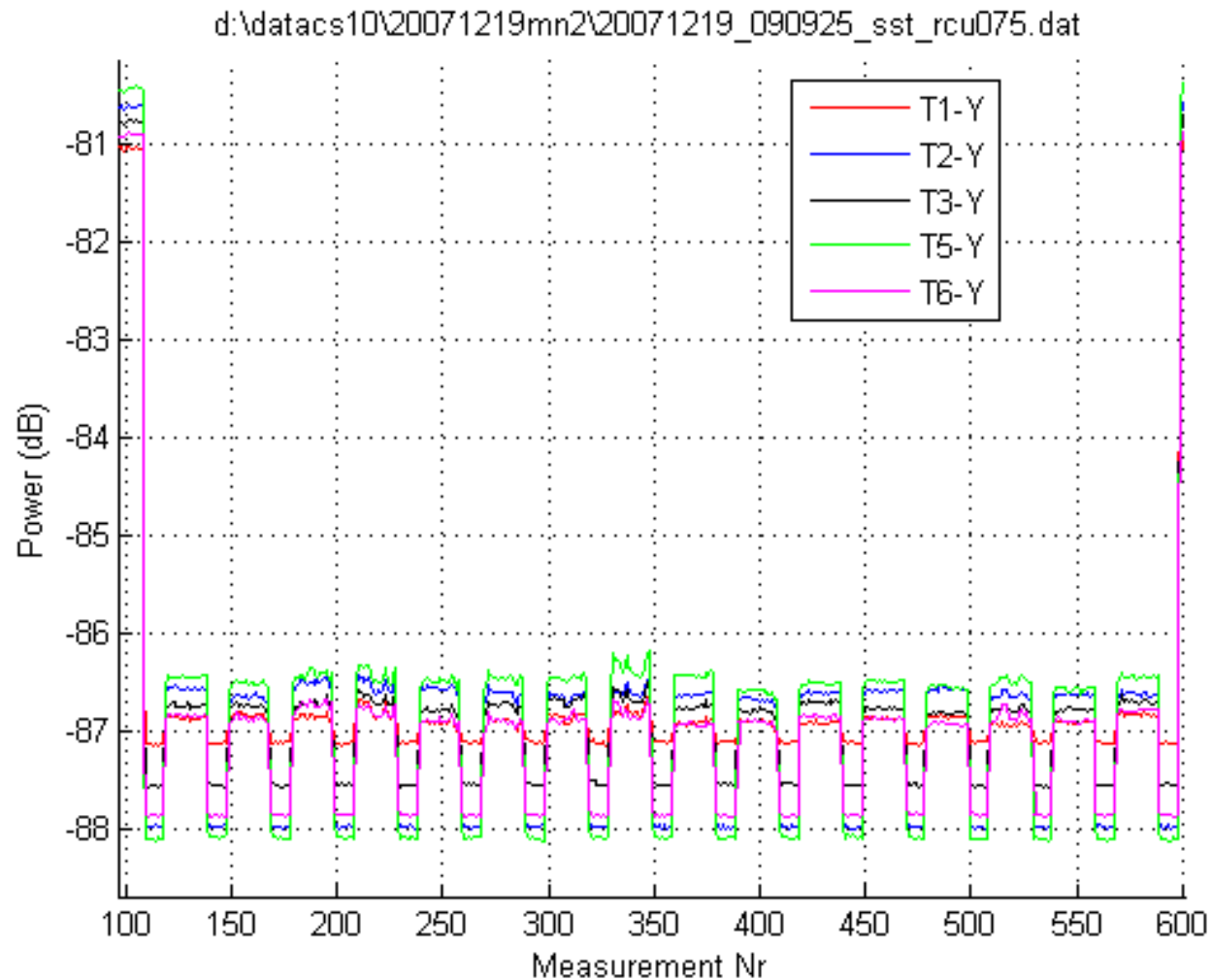
# Five Tiles on CS010C (Y polarity)



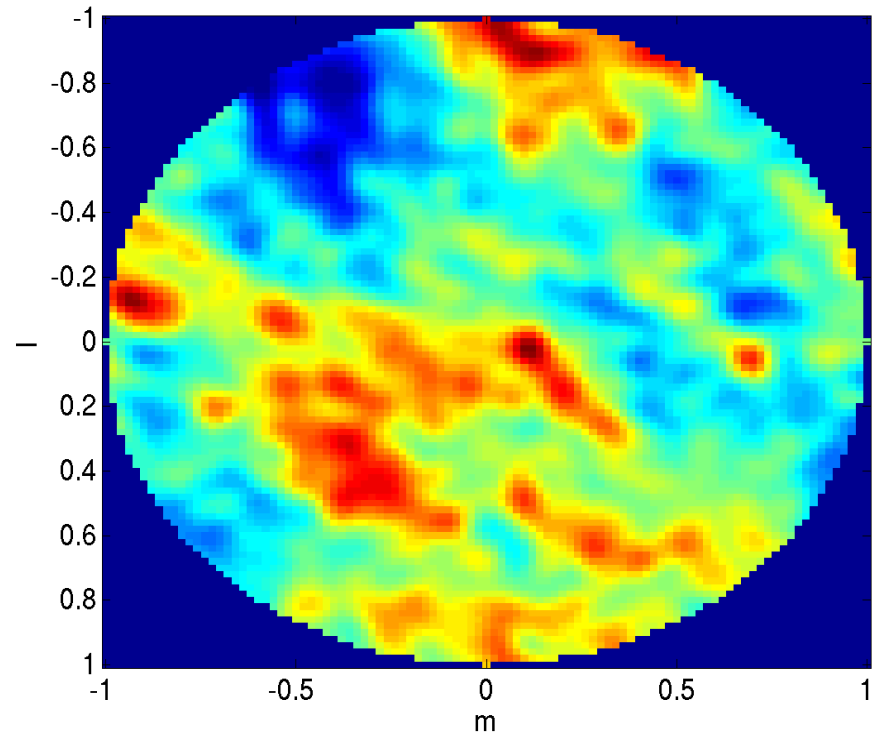
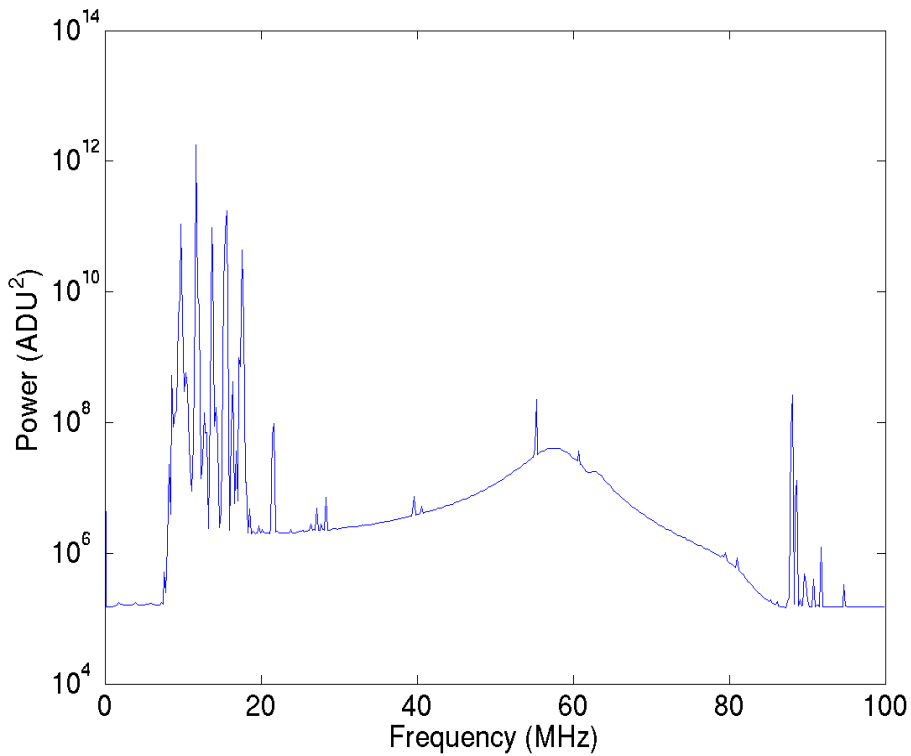
# Five Tiles on CS010C (Y polarity)



# Five Tiles on CS010C (Y polarity)



# Abnormal sky image at CS010C



# Abnormal sky image at CS010C



Goeiemoggel!

Melly Chrimass

Ab

Hapy new Yeal

# Conclusions

---

- ◆ HBA measurements are not sensitive for rainfall
  - ⊕ Only very small dip during extreme rainfall
  - ⊕ New design has tilted roof (current is flat)
  
- ◆ HBA element measurements
  - ⊕ All 16 elements are working fine
  - ⊕ The 24 hours variation is 3.5 dB (also at 110 MHz)