

LOFAR

Radboud
University
Nijmegen



TBB Busy Week 30.3. – 3.4.2009

Andreas Horneffer
for the LOFAR-CR Team

Main Topic: Data Acquisition

- Get the TBB dump-to-CEP to work
 - In a convenient fashion
 - With the necessary meta-information
- Old way: dump to LCU
 - Reliable
 - Slow: 15min for 0.5 GByte -> 4h for a full dump of 1 TBB
 - Inconvenient: files wind up on the LCU

■ Results:

- Encountered several problems with the tbb2h5 application
 1. Most of them are solved now.
 2. Remaining issues: Processing speed and memory usage
- Problems with the time-stamps in the TBB data
- Missing information on the Nyquist zone

■ ToDo:

- Fix TBB time-stamps (on the RSPs)
- Fix tbb2h5
- Write scripts for controlling more stations at once
- Get the TBBs included in MAC



LOFAR

TBB-Triggering

Radboud
University
Nijmegen



- Arthur familiarized himself with the triggering on the TBBs
- Triggering works in general
 - Found some bugs (channels not triggering, driver crashed)
 - Need to stop recording after single trigger for test purposes
- Needs more tests



LOFAR

Dynamic Spectra

Radboud
University
Nijmegen



- Sander and Jean-Mathias generated dynamic spectra from TBB data
 - First step for triggering on strong bursts
- Next step: dynamic spectra from “pulsar data”



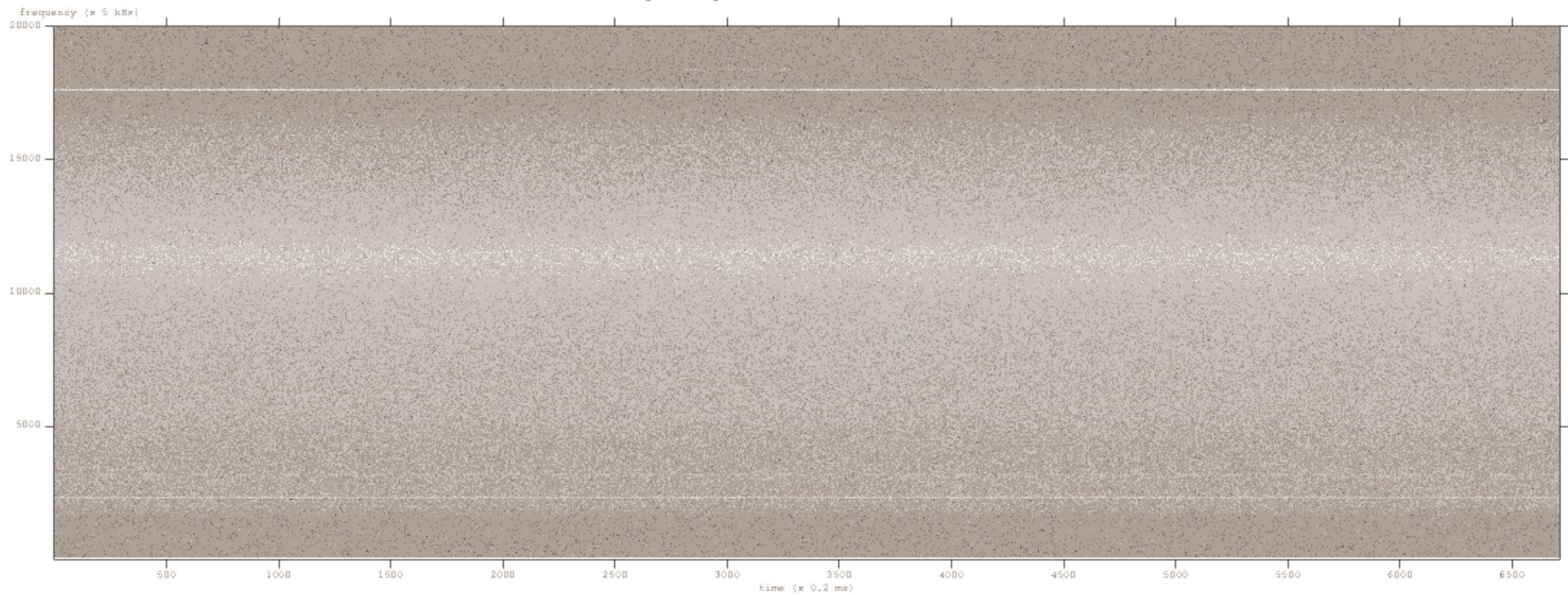
LOFAR

Dynamic Spectrum

Radboud
University
Nijmegen



Dynamic spectrum of TBB data from an LBA



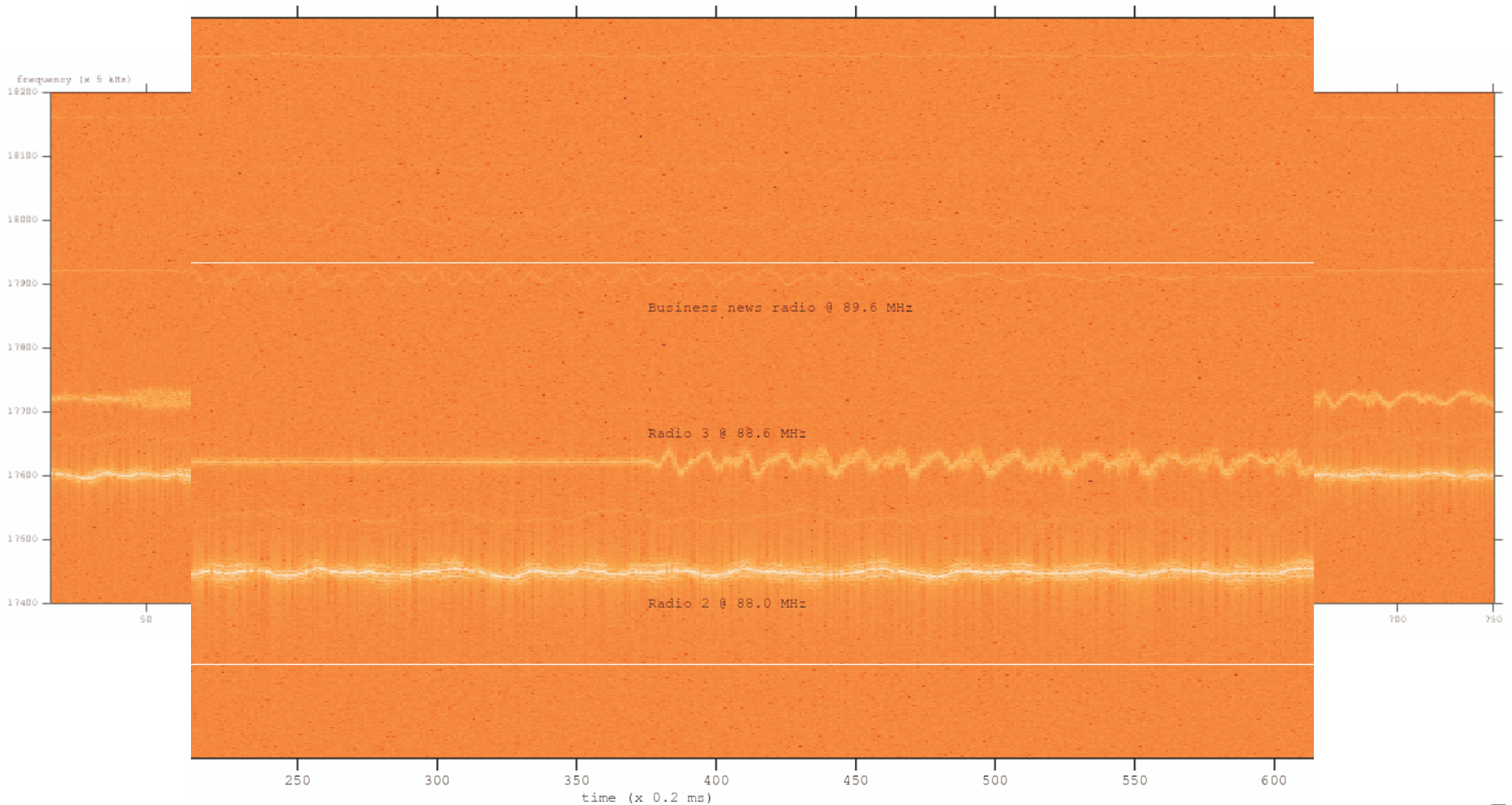


Dynamic Spectrum (FM-band zoom)

Radboud
University
Nijmegen



Dynamic spectrum of TBB data from an LBA



-
- Lars and Sef continued on the imaging of TBB-data
 - Lots of debugging
 - No (really) working display tool for casa images: convert to FITS
 - Kalpana continued on CEP based triggering
 - Still waiting for data...

- My main goal (convenient TBB-dumps) was not reached.
 - Software was not in the state that I assumed.
 - Several problems solved, some more discovered
 - Biggest remaining issue: Memory usage of tbb2h5
- We (our new students) got familiarized with the system.
 - We now know where we are.
- Next TBB busy week: Early June