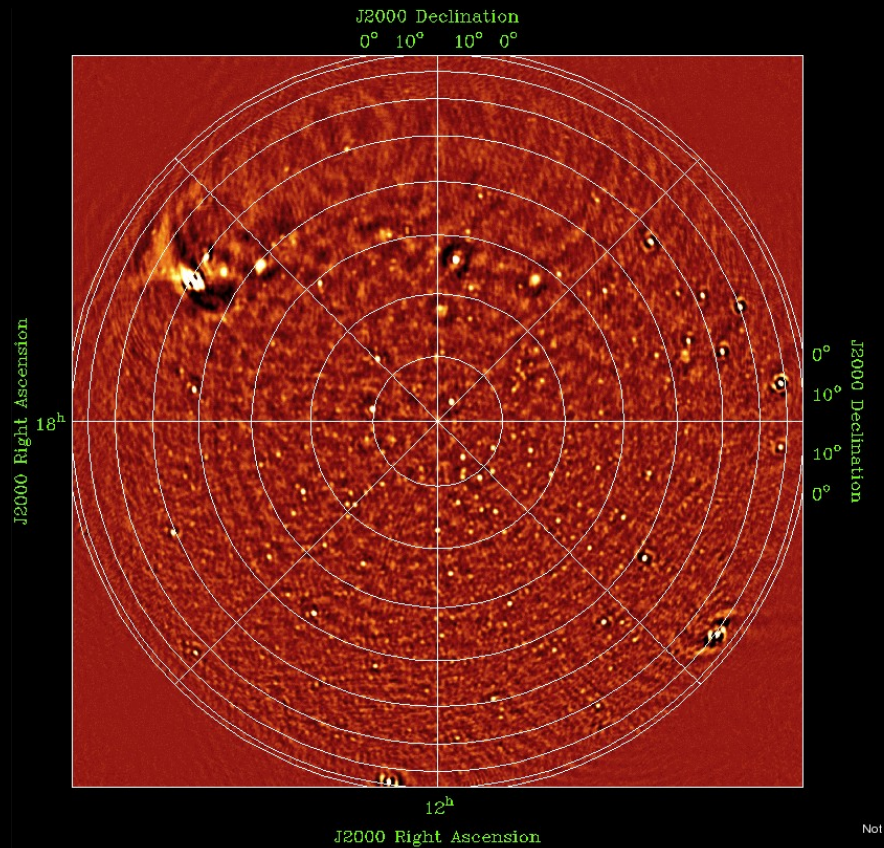


LOFAR Roll Out & SW Update

André W. Gunst



➤ MS³ delayed to March 2010

➤ Necessary

☞ stations

☞ facet correction

☞ beam model

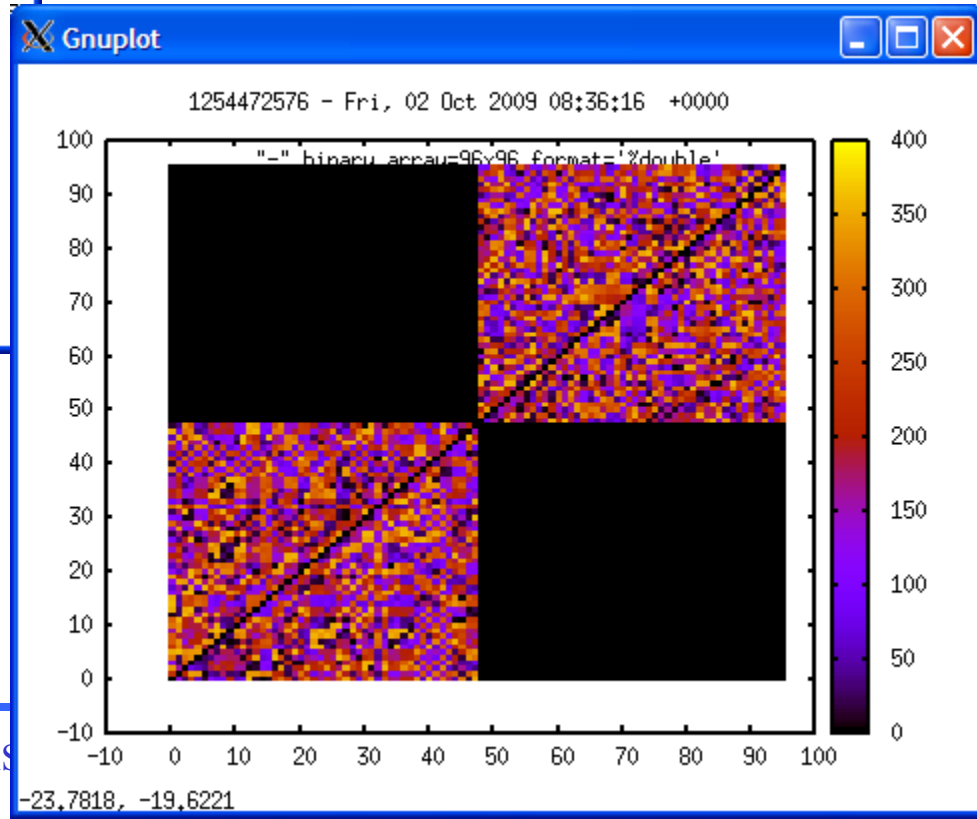
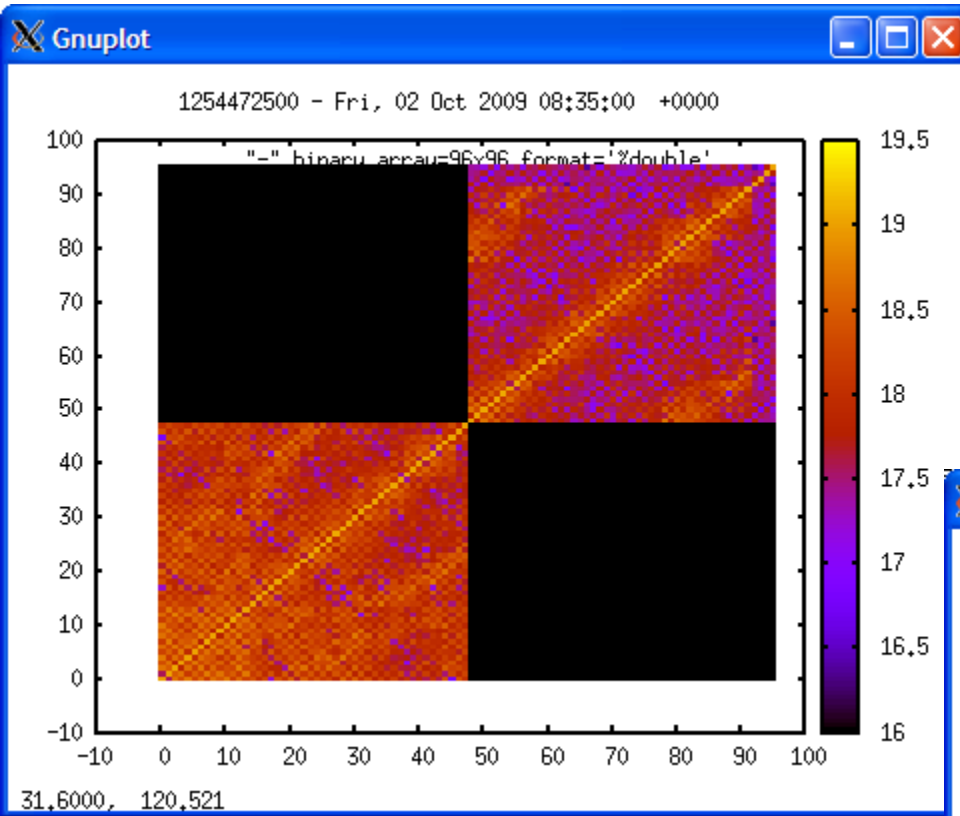
☞ ionosphere model

☞ bandpass correction

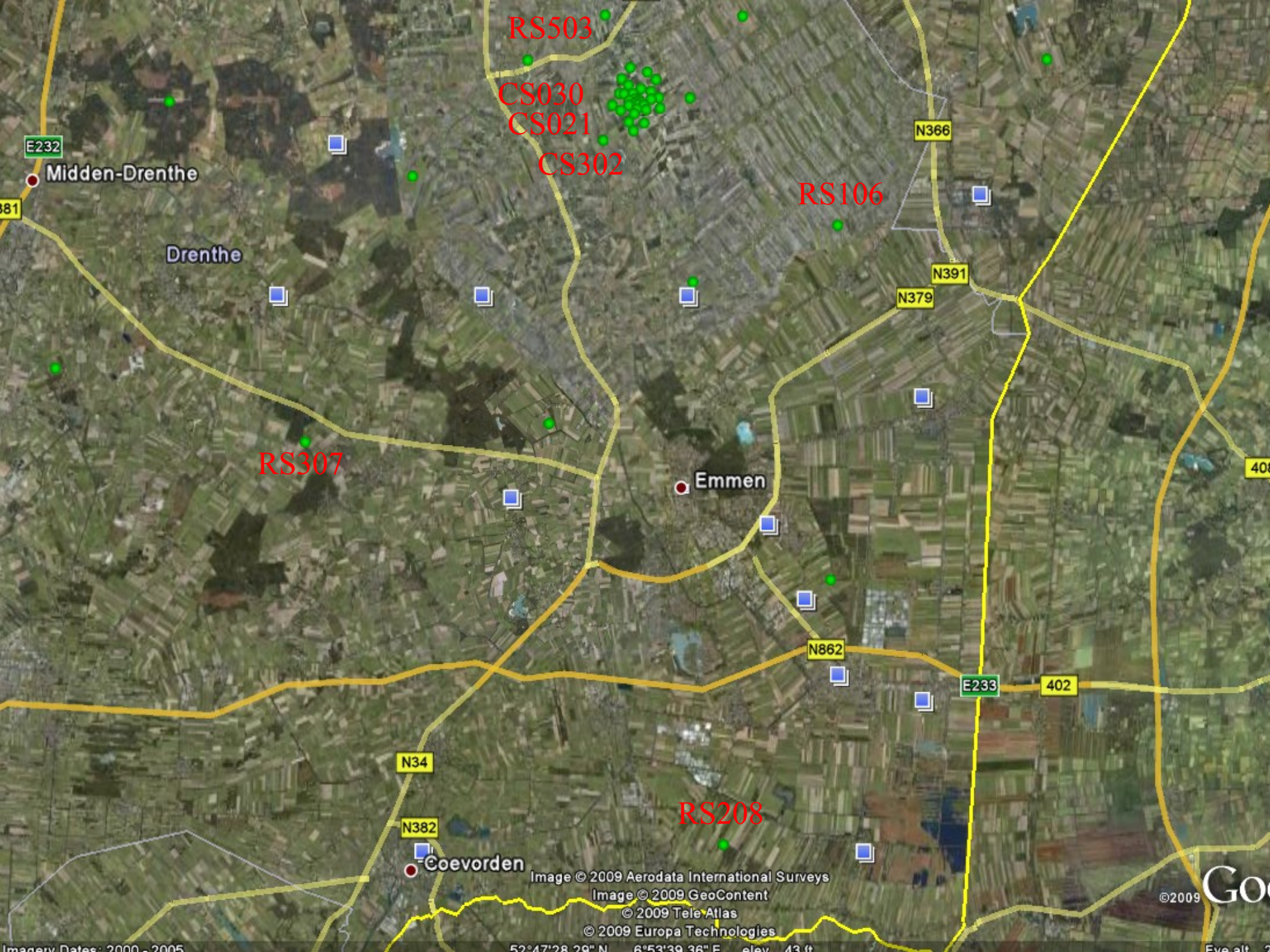
☞ A-team subtraction

☞ clock correction

- Stations can be controlled
- Issues with control of Central Systems



Station/Item	Cabinet	LBA	HBA	Fibre	CEP connection	Validated
CS302						
RS307						
RS503						
RS106						
RS208						
CS030						
CS401						
CS021						
CS032						
RS306						
CS301						
CS501						
RS509						
CS103						
CS001						
CS002						
CS003						
CS004						
CS005						
CS006						
CS007						
CS024						
CS201						
CS101						
CS026						
RS205						
CS017						
RS104						
RS205						
Effelsberg						
Tautenburg						
Garching						
Totals	27	26	14	10	10	6



RS503

CS030

CS021

CS302

RS106

RS307

Emmen

RS208

Coevorden

Midden-Drenthe

Drenthe

Image © 2009 Aerodata International Surveys

Image © 2009 GeoContent

© 2009 Tele Atlas

© 2009 Europa Technologies

Imagery Dates: 2000 - 2005

52°47'28.29" N 6°53'39.36" E elev. 43 ft

©2009

GO

Elev alt







RS205



RS205



RS205







VOLVO

VOLVO

EC210BLC



EMULC

KUBOTA

EC210BLC



VOLVO

SCHLERI

VOLVO

EX 2100 LC

VOLVO

SCHLERI







TRITON



- LCU replaced
- 6 SPUs replaced
- 12 TBBs replaced
- RCUs modified
- Firmware flashed
- EC installed
- HBA validated

- Data link: 10 GbE
- Bandwidth: 48 MHz
- All VLANs now defined
- Issue: Effelsberg data does not reach Groningen now

Tautenburg
(25 tiles installed now)

