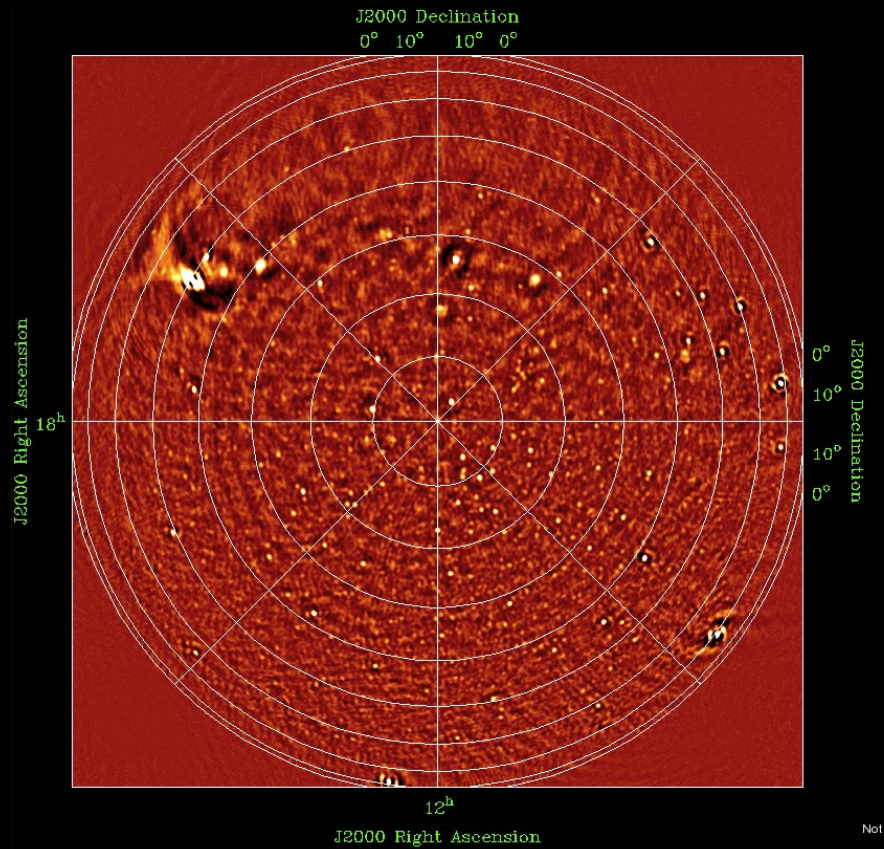


# LOFAR Roll Out

André W. Gunst



Station/Item	Cabinet	LBA	HBA	Fibre	CEP connection	Validated
CS302						
RS307						
RS503						
RS106						
RS208						
CS030						
CS401						
CS021						
CS032						
RS306						
CS301						
CS501						
RS509						
CS103						
CS001						
CS002						
CS003						
CS004						
CS005						
CS006						
CS007						
CS024						
CS201						
CS101						
CS026						
RS205						
CS017						
RS104						
RS210						
RS310						
RS404						
RS406						
RS407						
RS409						
RS410						
RS508						
Effelsberg						
Tautenburg						
Garching						
Potsdam						
Juelich						
Nancay						
Onsala						
Chilbolton						
Totals	31	28	25	29	29	21

- CS301: corrosion issues fixed in HBA connec.
- CS501: temp. controller tripped → 48 V down
- CS002, CS026, CS017 clock issues
- CS024: was no connection between GPS and pps (fixed)
- Software which reads out
- Shortcircuit in the power line of CS021 and CS030: solved!
- PPS lock issues on CS002, CS017, CS024 and Tautenburg.
- Tautenburg clock is stable now!



Tautenburg

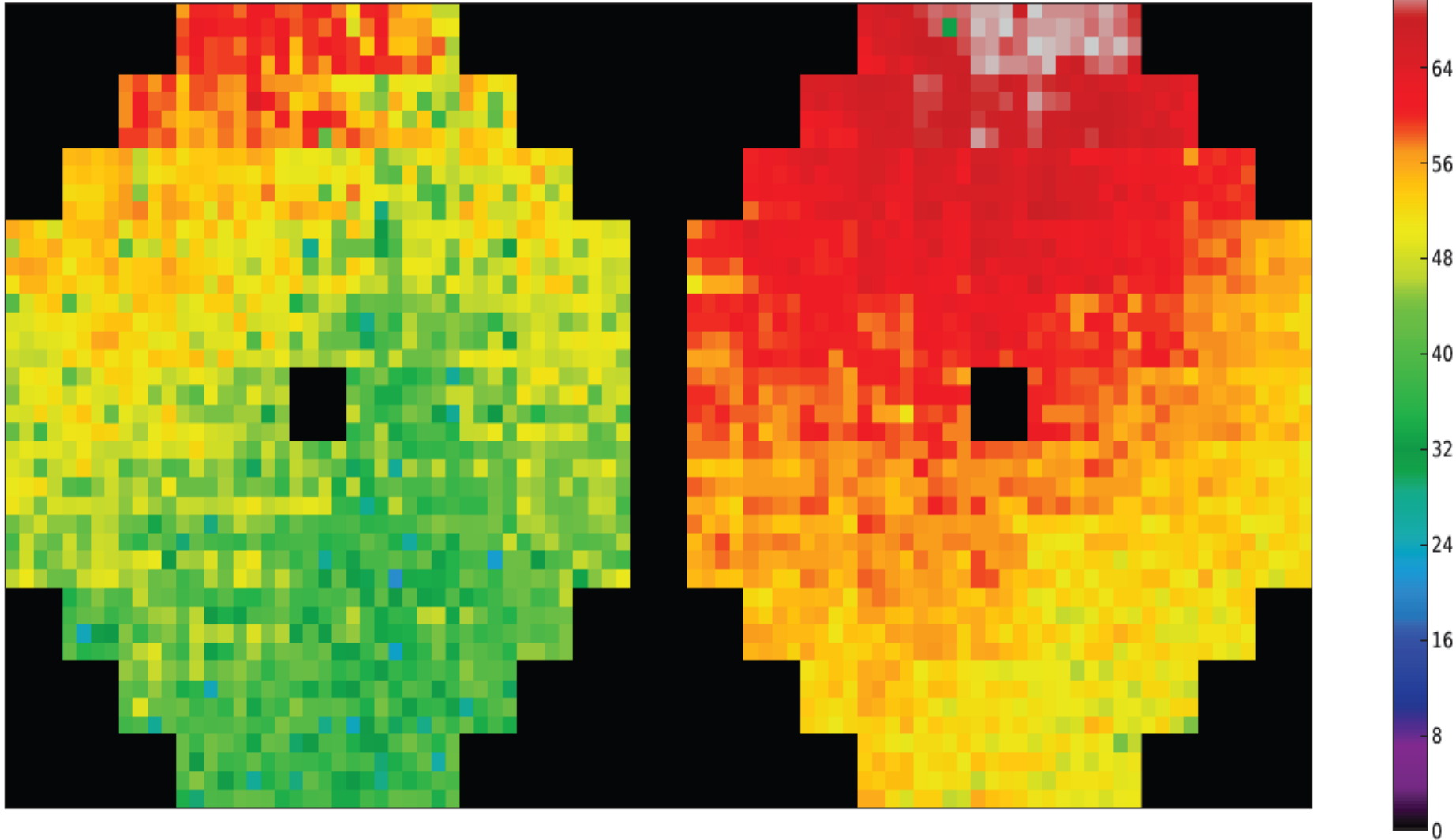




- Extra anchors installed
- Dummy tile in centre of the field installed
- X, Y's reswapped

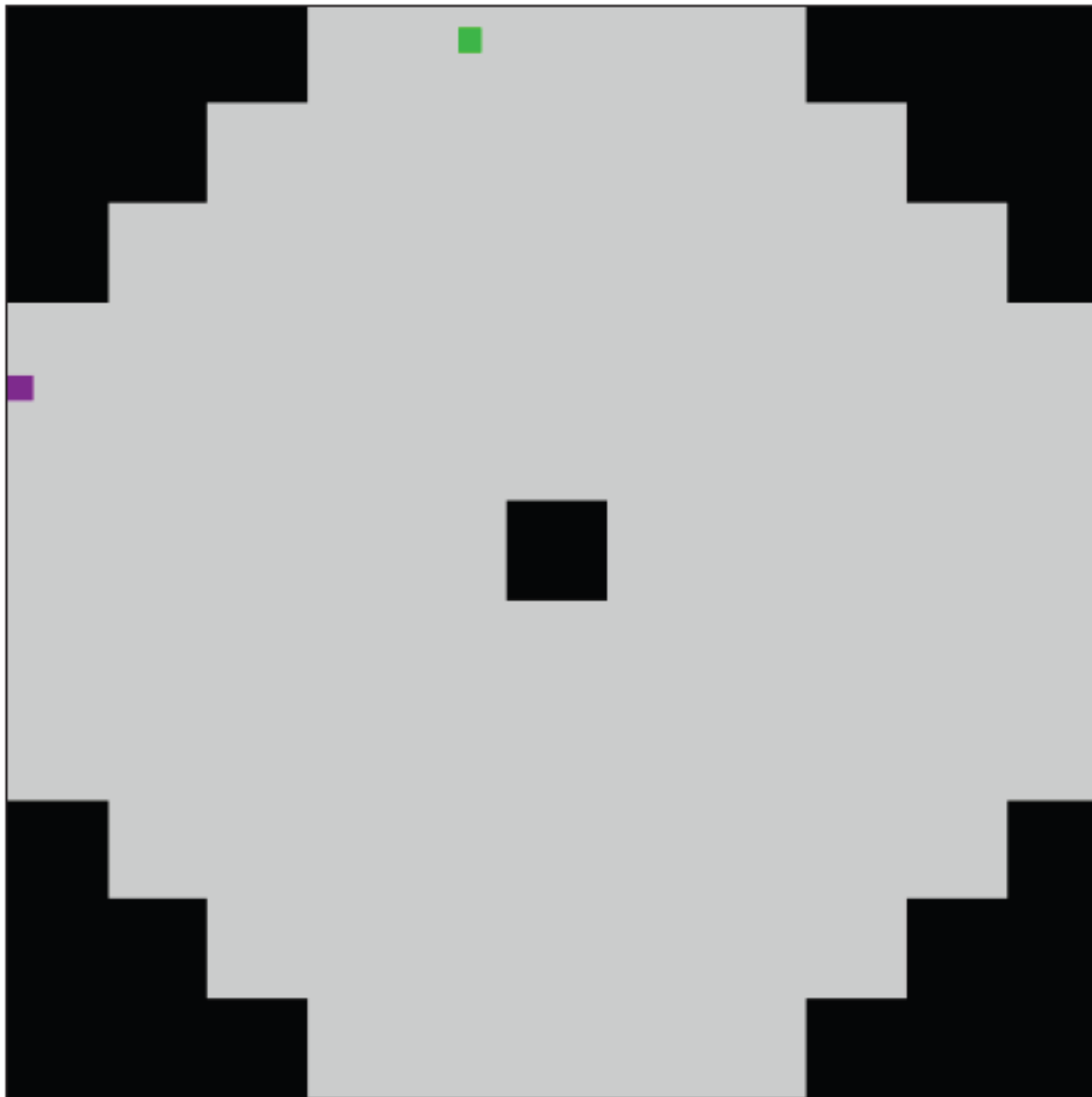


file=C:\Documents and Settings\donker\My Documents\\_LOFAR\HBA\polarisation errors\DE603c\HBA\_factors\_128-dipole-container-290310  
X polarity Y polarity



AS'

possible changed polarisation





- There was a human resource change (end of Oct.)
- From 18 March onwards no swaps should be in the HBA tiles
- Suspects in installed stations: CS024, CS103, RS205, RS306, CS001, CS201 (24 pieces)
- Suspects in stored stations: RS407, RS104, RS101 (till tile 19), Potsdam, Garching, Nancay

➤ Stopday at 12 April