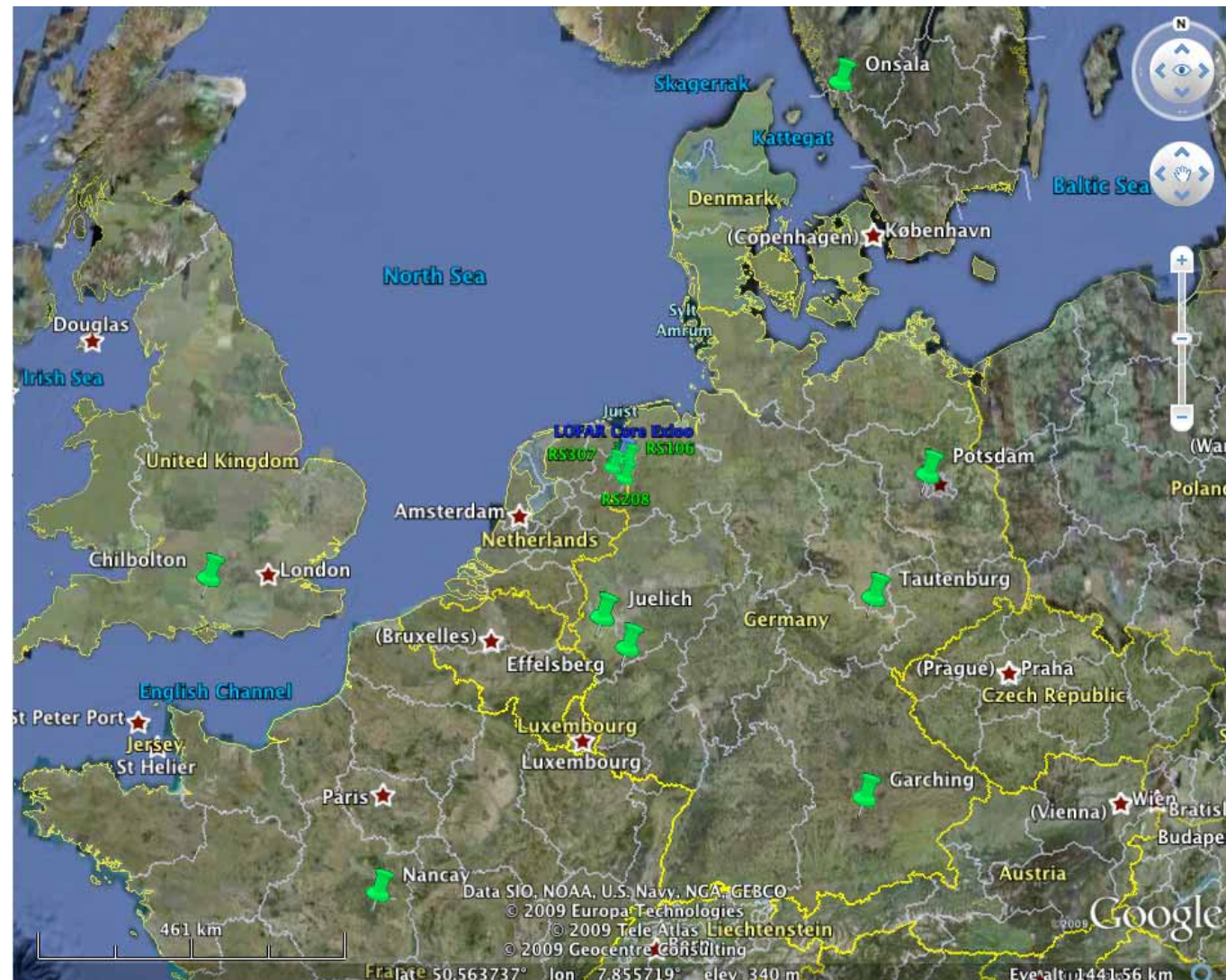


# LOFAR Roll-out update

Corina Vogt

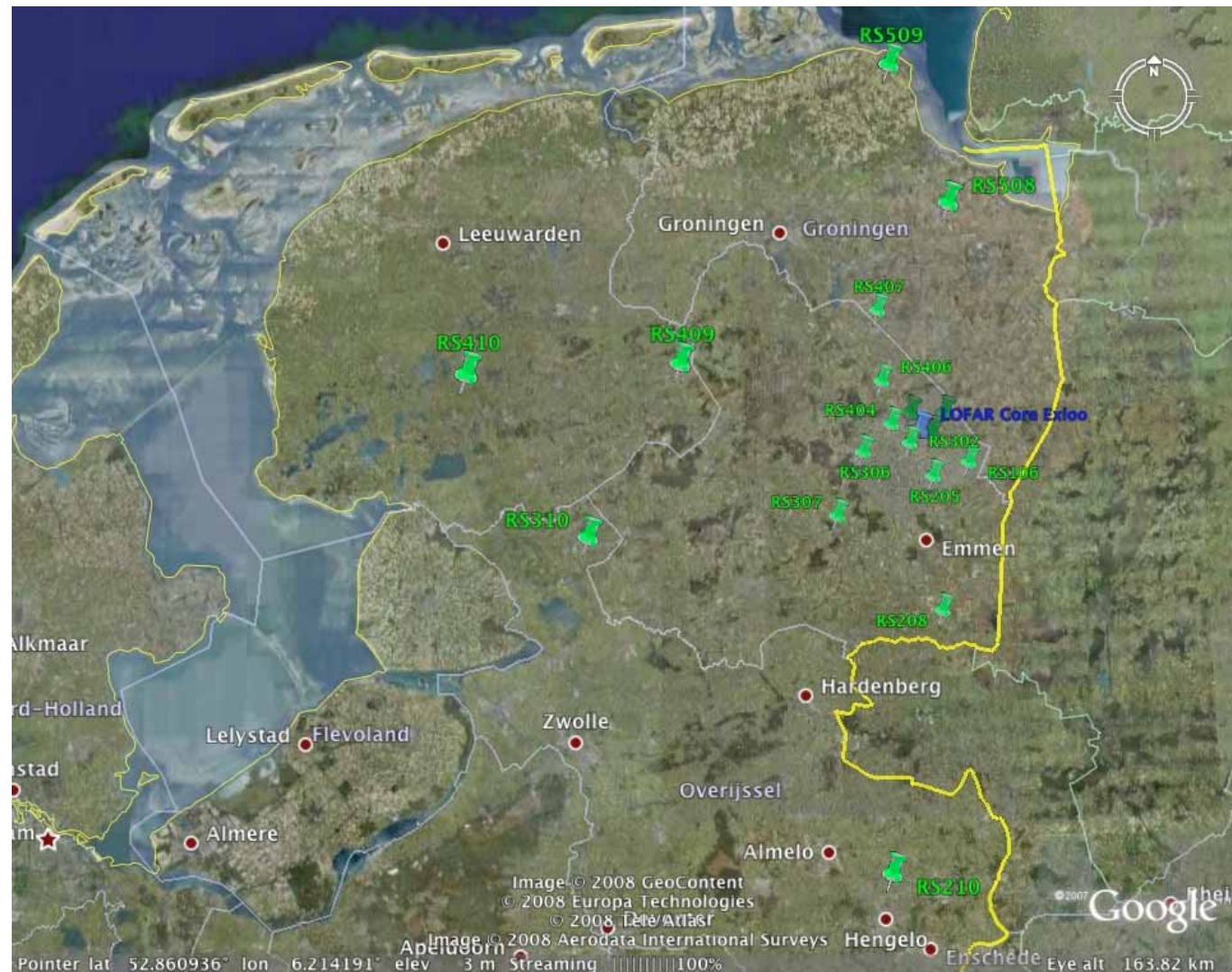
On behalf of the LOFAR team  
(LOFAR/ASTRON)

# LOFAR - the not so distant future

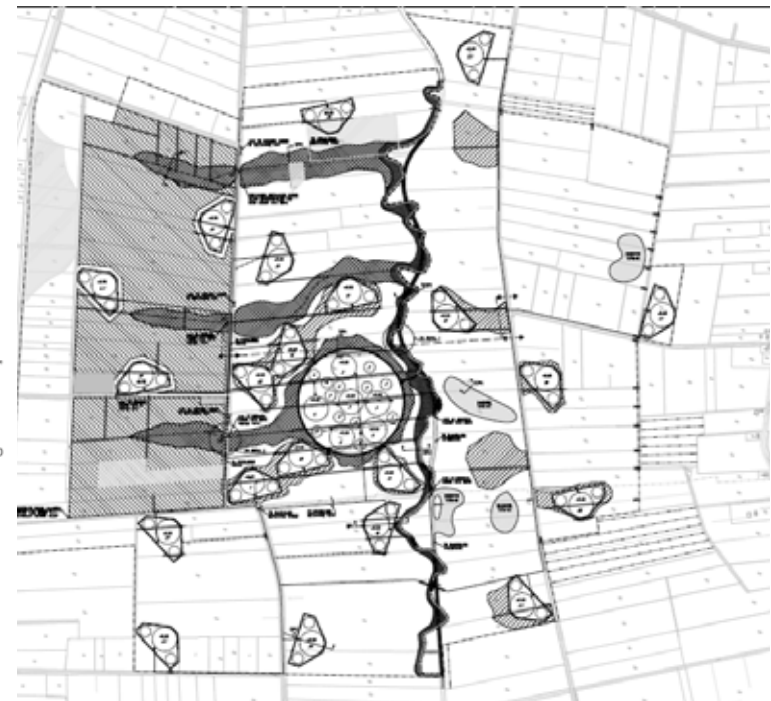
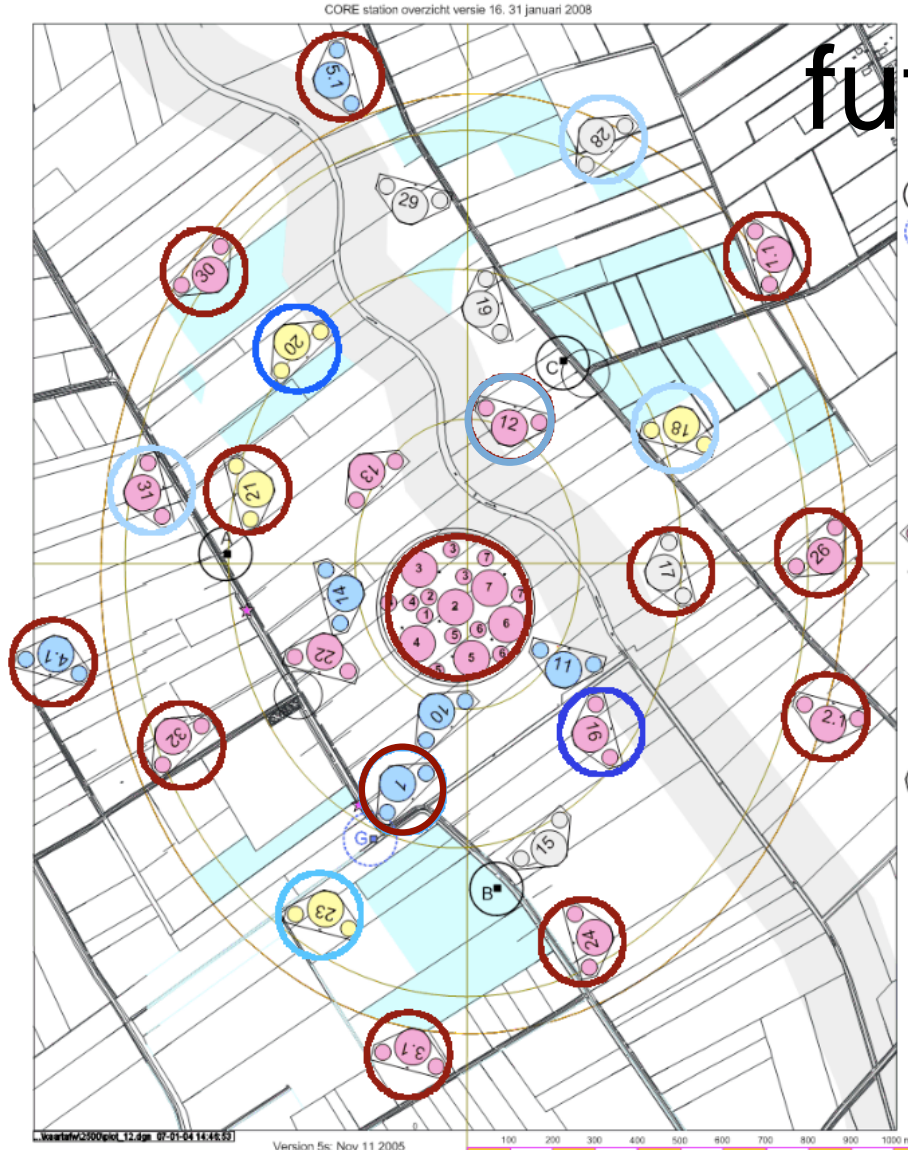




# LOFAR - the not so distant future



# LOFAR - the not so distant future



- Best 18 core station
- Best 24 stations



# After a cold and rainy winter...





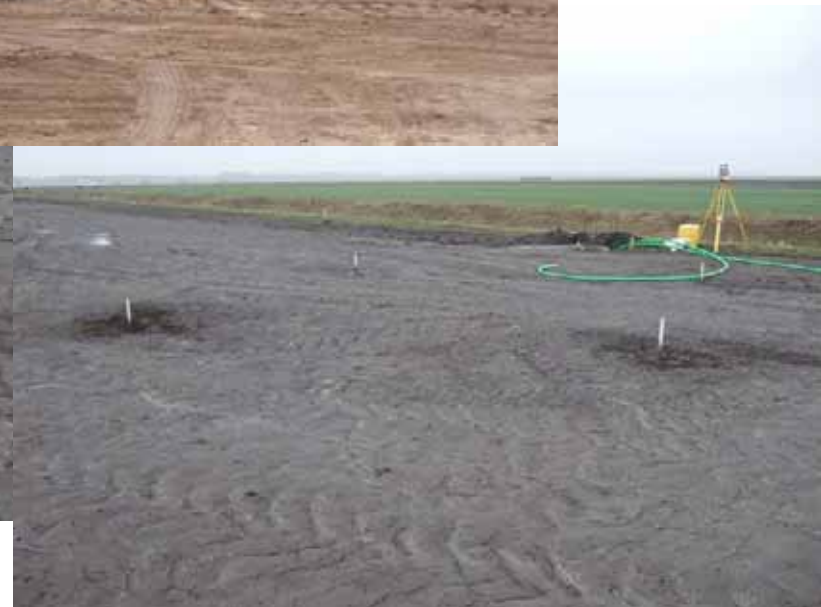
... Roll-out is progressing fast

CS302 - almost ready for handover



# Building a station

Measuring & surveying the field before and after flattening

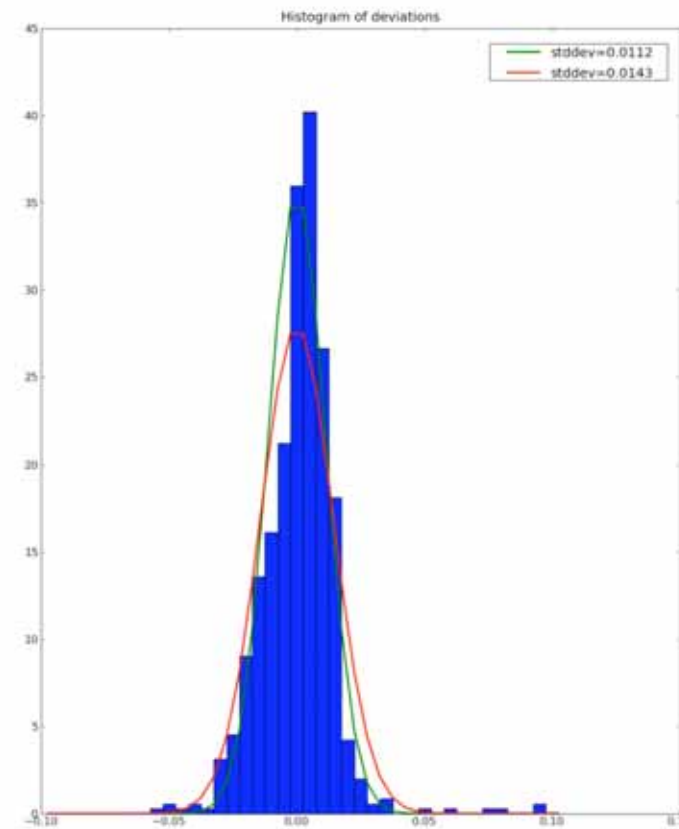
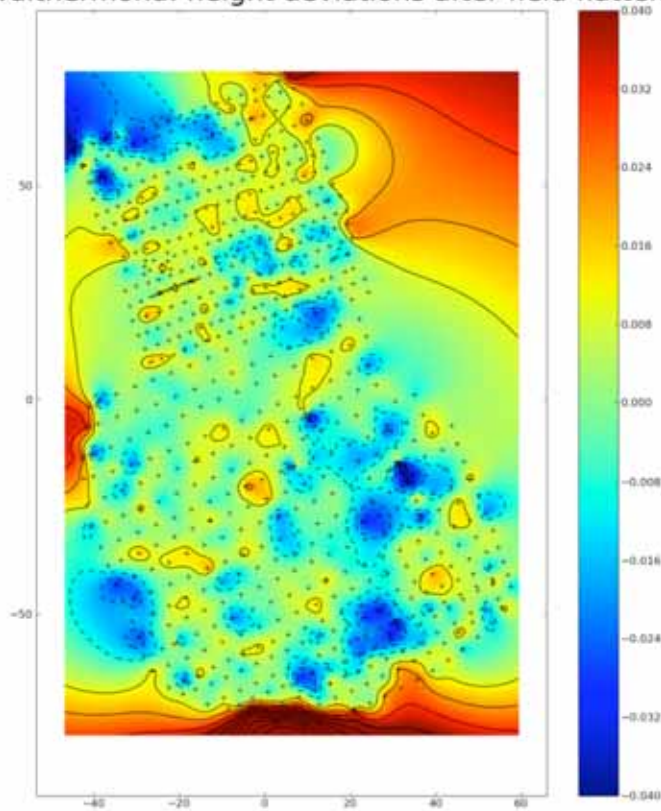




# Building a station

Measuring & surveying the field before and after flattening

RS106 - Valthermond: height deviations after field flattening



Flatness verification



# Building a station

Setting out antenna & cable trench markers



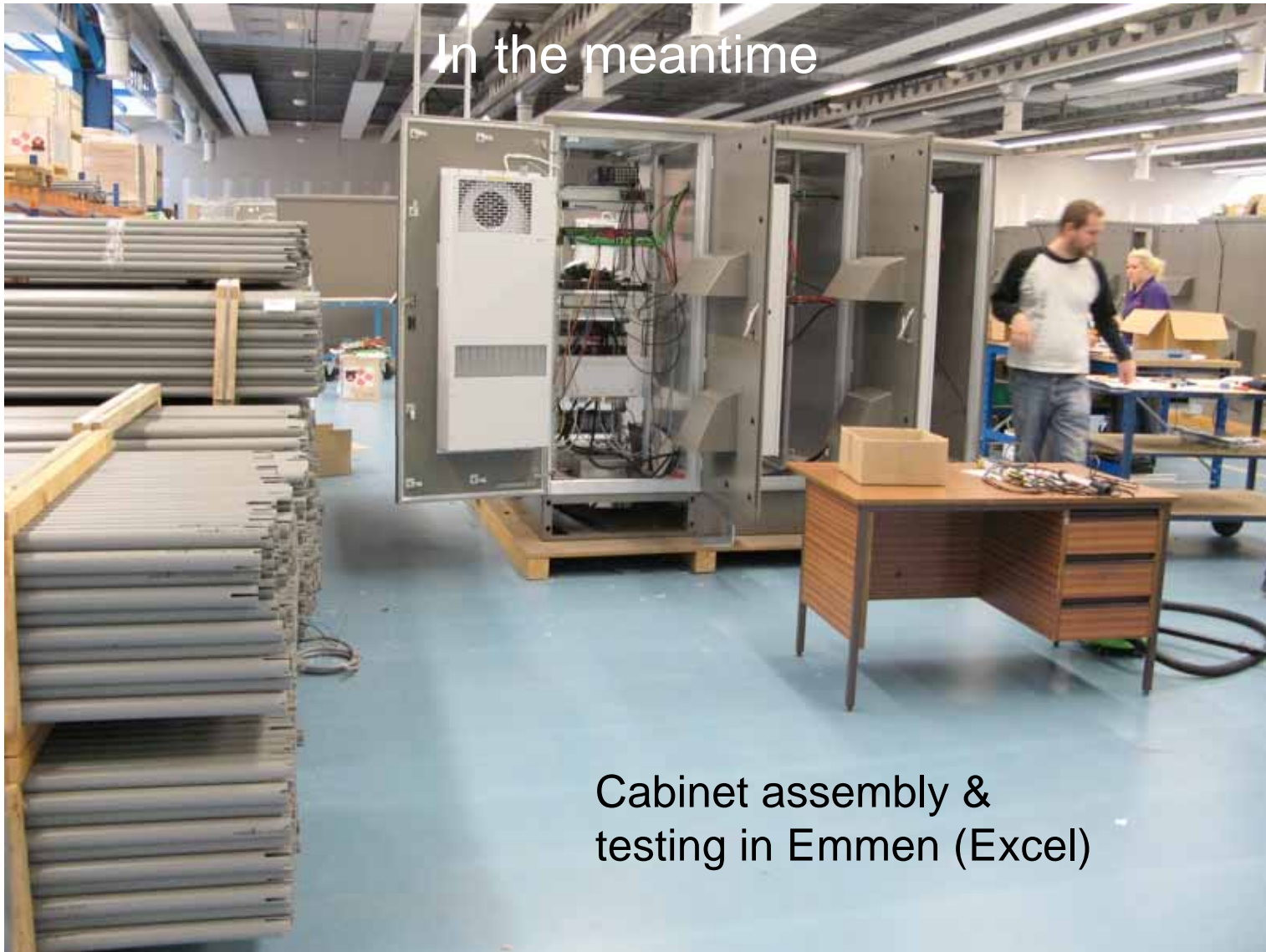
# Building a station

Digging cable trenches and laying cables



# Building a station

In the meantime



Cabinet assembly &  
testing in Emmen (Excel)



# Building a station

Cabinet platform & Placement cabinet



# Building a station

More cabinets and cables





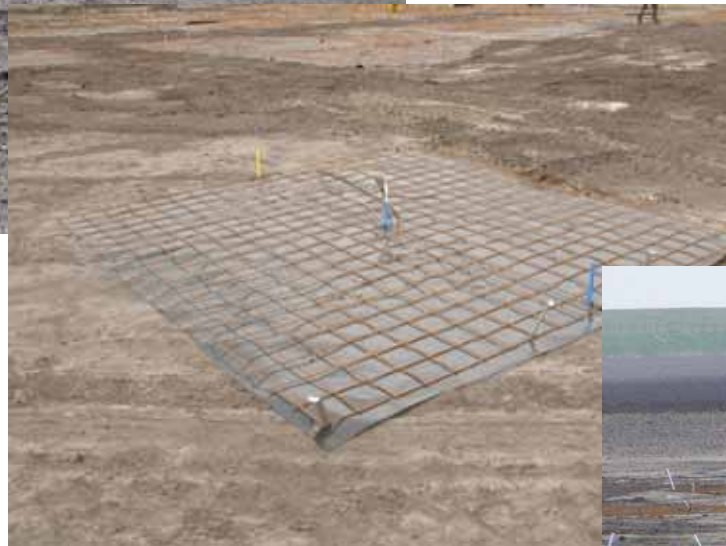
# Building a station





# Building a station

And then the antennas are placed

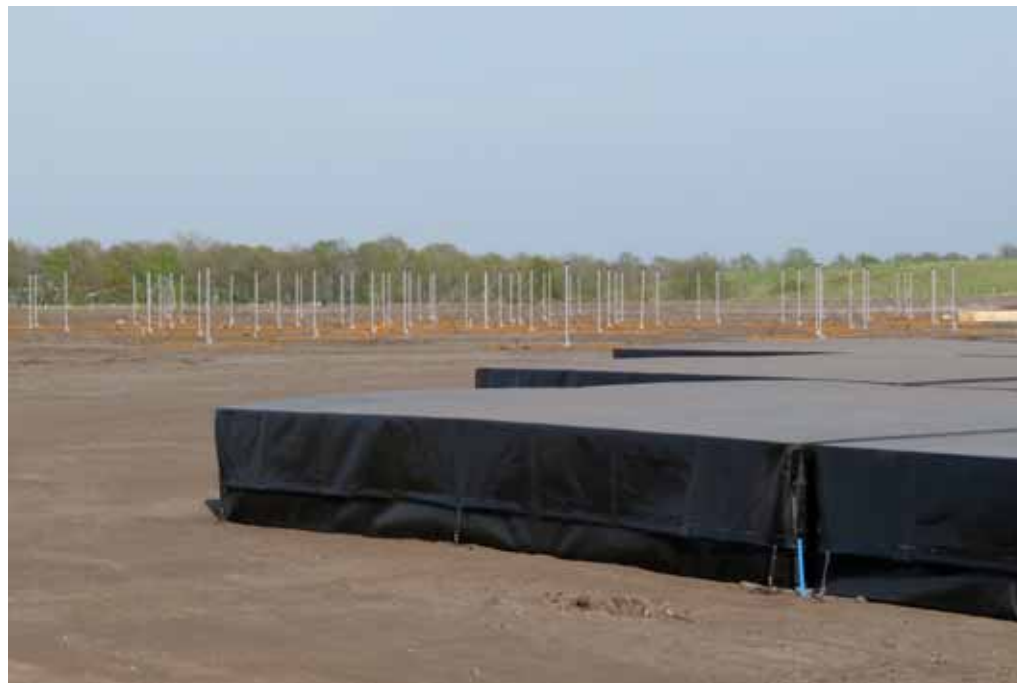


# Building a station

And then the antennas are placed



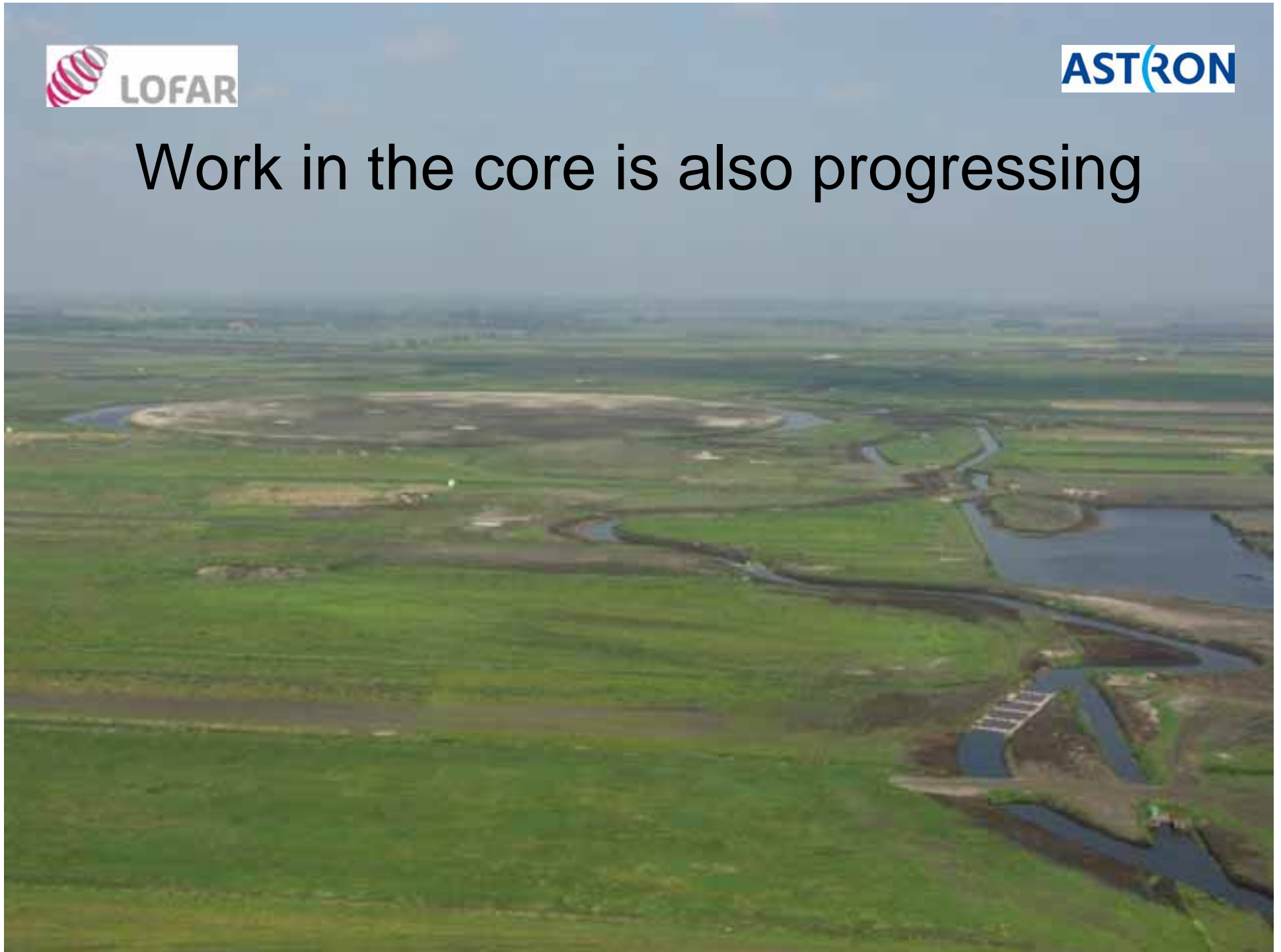
# Building a station







Work in the core is also progressing



Work in the core is also progressing





# DE601 - Effelsberg



Working hard on connection



# DE602 - Unterweilenbach





# DE603 - Tautenburg





# Status of other international stations

- DE604 (Potsdam)
  - Contract negotiations ongoing
  - Started field preparations
- DE605 (Jülich):
  - contract signed
  - start in September (harvest)

# Status of other international stations

- FR606 (Nançay)
  - Contract signed
  - Start field preparation/site selection
- SE607 (Onsala):
  - contract (almost) signed
  - Applying for planning permissions
  - Start in September/October (harvest)

# Status of other international stations

- UK608 (Chilbolton):
  - contract (almost) signed
  - Applying for planning permissions
  - Start in September



But there is more to come...



But there is more to come...



# Summarising:

- CS302 - (almost) done
- RS307 & RS503 hardware is being placed
- RS106 antenna markers placed
- Followed by: RS306 & RS208 (CS103, RS205 or RS406)
- Core stations are being prepared
  - Bird-free fields soon flattened: CS301, CS030 (CS032, CS401, CS021, CS501)
  - Superterp - Start after the “building holiday”
- Continue international station roll-out