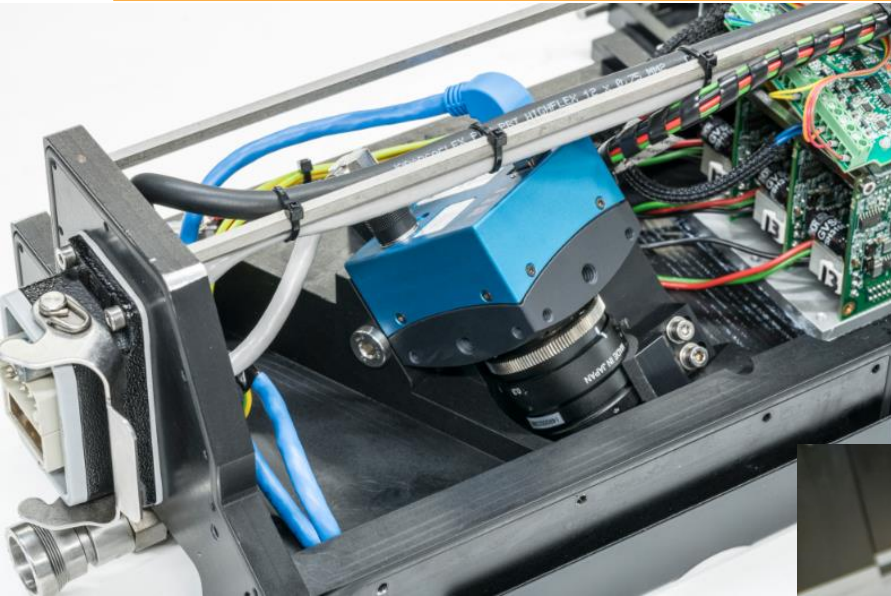


# Introduction

- Based in Groningen, The Netherlands
- Founded in 1999
- Focus on
  - Container glass forming
  - Sensors, robotics, artificial intelligence (AI)
  - Inspection, process monitoring, process improvement and (automatic) control
- Global presence
  - +30 countries
  - +50 customers
  - +600 equipment installed
- Independent

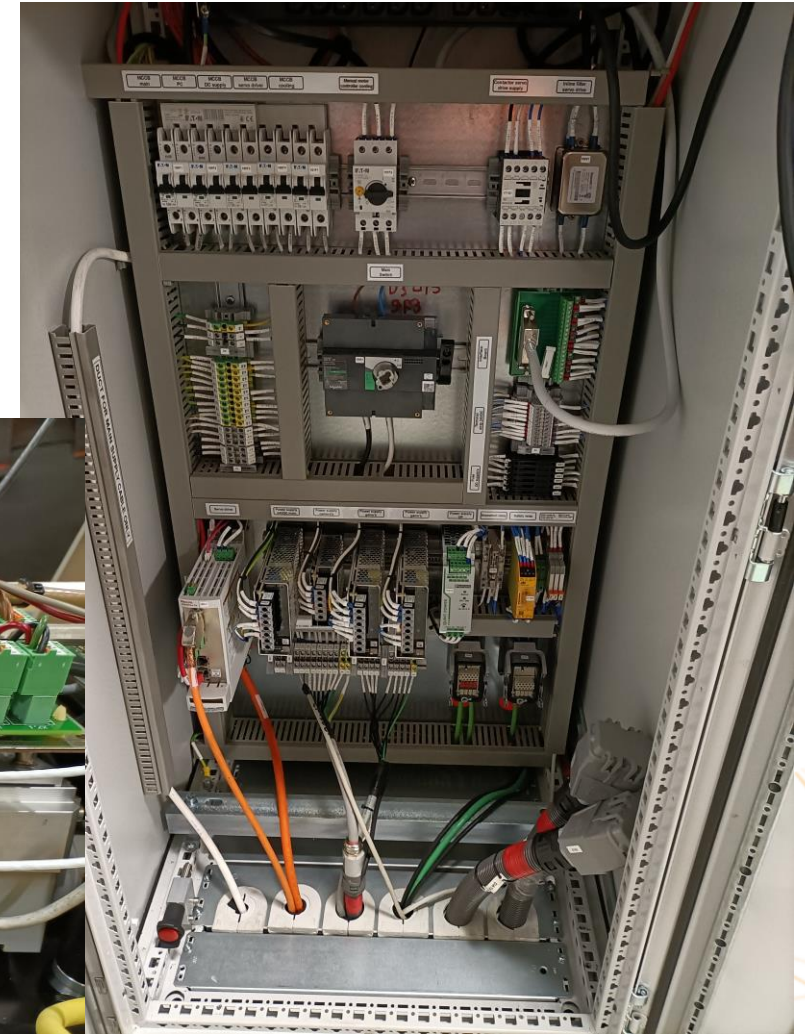


# Sensitive electronics, installed in heavy industrial environment

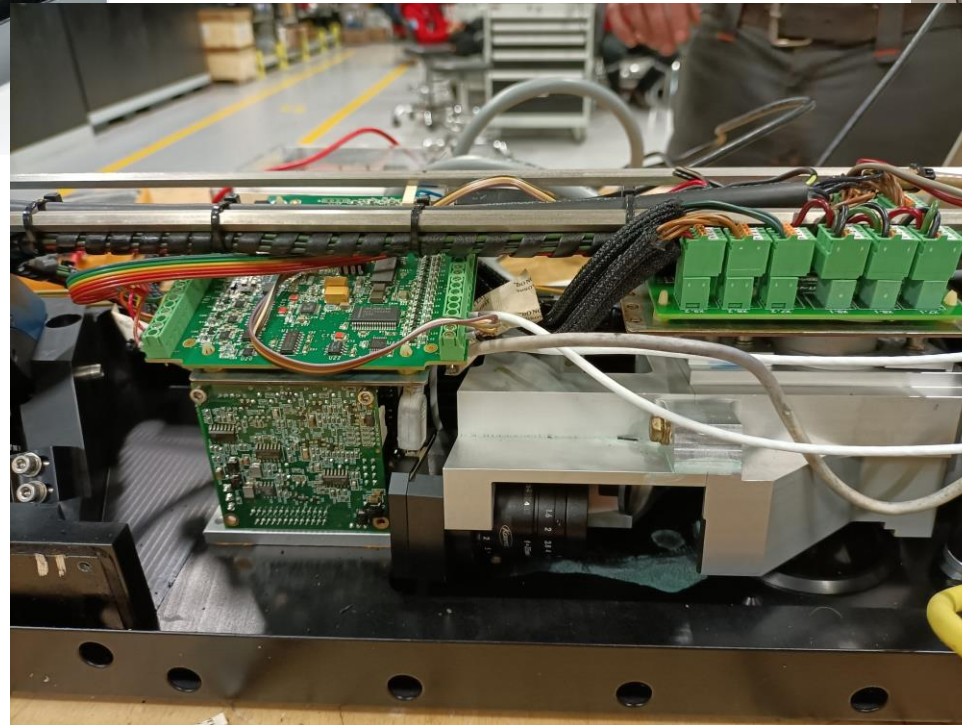


Intermittent issues with high-tech measurement device at customer in USA

Suspicion:  
Electro Magnetic Interference



- ~~Software bug~~
- ~~Grounding issues~~
- ~~Defective component~~
- ~~Vibrations~~
- ~~...~~



xparvision

Solved within 2 months with  
expertise of Wireless Data Lab



Sander de Jong  
Lead Engineer  
[jong@xparvision.com](mailto:jong@xparvision.com)  
050 316 2888

